

# ETHOS

METROTOWN

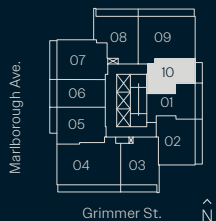
## PLAN A

STUDIO

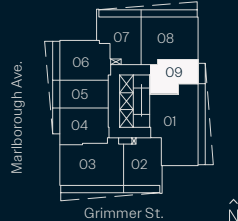
Interior: 439 sf  
Exterior: 43 - 48 sf  
Total: 482 - 487 sf



LEVEL 10



LEVEL 11-33



The developer reserves the right to make changes and modifications to the information contained herein. Floorplans and floorplates are subject to change without notice. Please contact a developer sales representative for details. This is not an offering for sale, as an offering can only be made after the filing of a disclosure statement, and only in jurisdictions where qualified in accordance with applicable local laws. E.&O.E.

**Anthem**

# ETHOS

METROTOWN

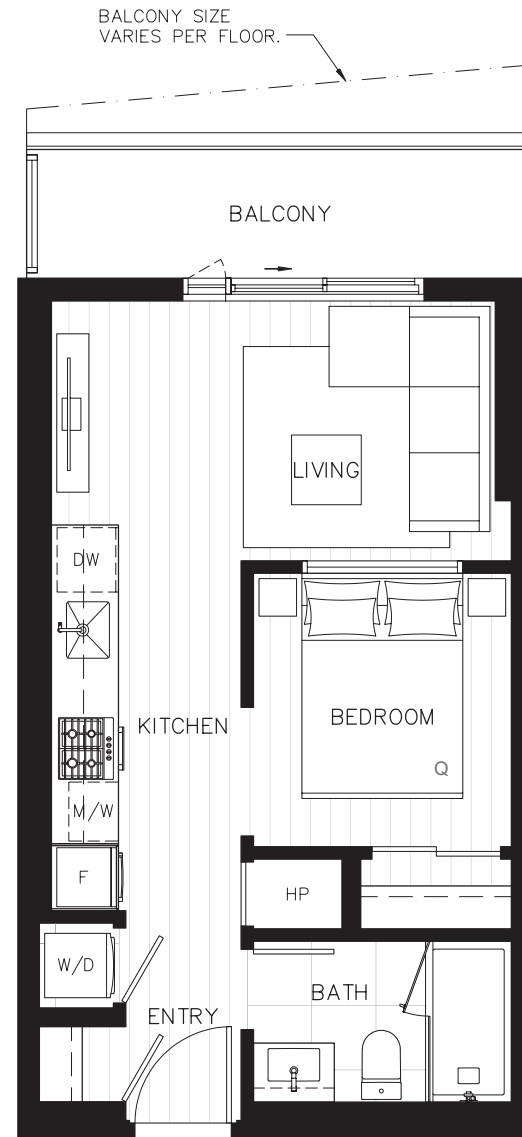
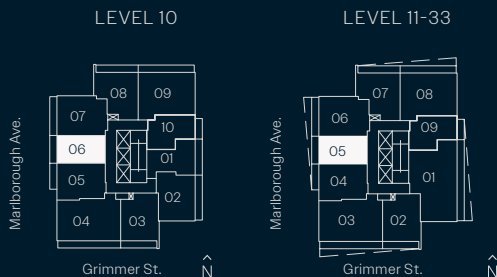
## PLAN B

JR. 1 BEDROOM

Interior: 412 sf

Exterior: 61 - 89 sf

Total: 473 - 501 sf



The developer reserves the right to make changes and modifications to the information contained herein. Floorplans and floorplates are subject to change without notice. Please contact a developer sales representative for details. This is not an offering for sale, as an offering can only be made after the filing of a disclosure statement, and only in jurisdictions where qualified in accordance with applicable local laws. E.&O.E.

# ETHOS

METROTOWN

## PLAN C1-A

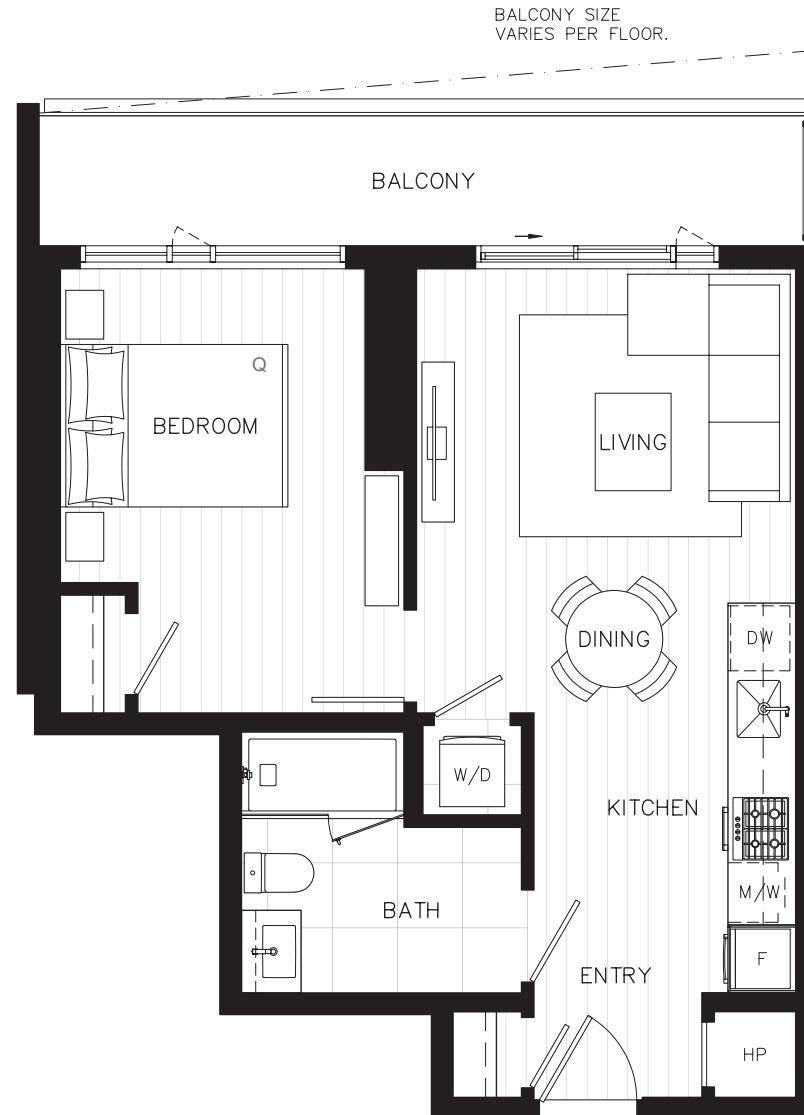
1 BEDROOM

Interior: 558 sf

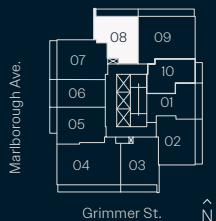
Exterior: 98 - 122 sf

Total: 656 - 680 sf

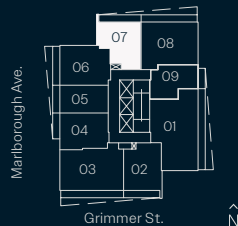
Adaptable home



LEVEL 10



LEVEL 11-33



The developer reserves the right to make changes and modifications to the information contained herein. Floorplans and floorplates are subject to change without notice. Please contact a developer sales representative for details. This is not an offering for sale, as an offering can only be made after the filing of a disclosure statement, and only in jurisdictions where qualified in accordance with applicable local laws. E.&O.E.

**Anthem**

# ETHOS

METROTOWN

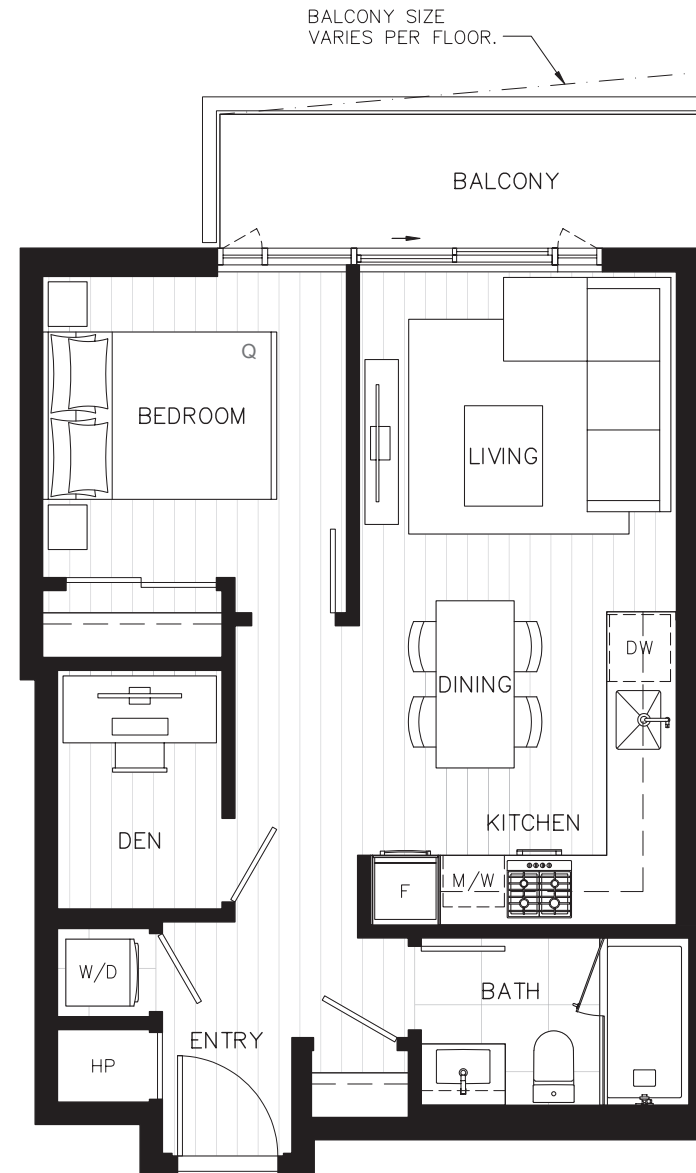
## PLAN D

1 BEDROOM + DEN

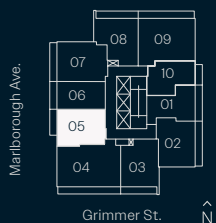
Interior: 538 sf

Exterior: 58 - 67 sf

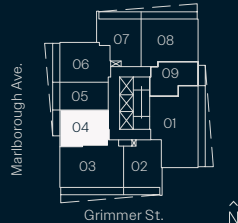
Total: 596 - 605 sf



LEVEL 10



LEVEL 11-33



The developer reserves the right to make changes and modifications to the information contained herein. Floorplans and floorplates are subject to change without notice. Please contact a developer sales representative for details. This is not an offering for sale, as an offering can only be made after the filing of a disclosure statement, and only in jurisdictions where qualified in accordance with applicable local laws. E.&O.E.

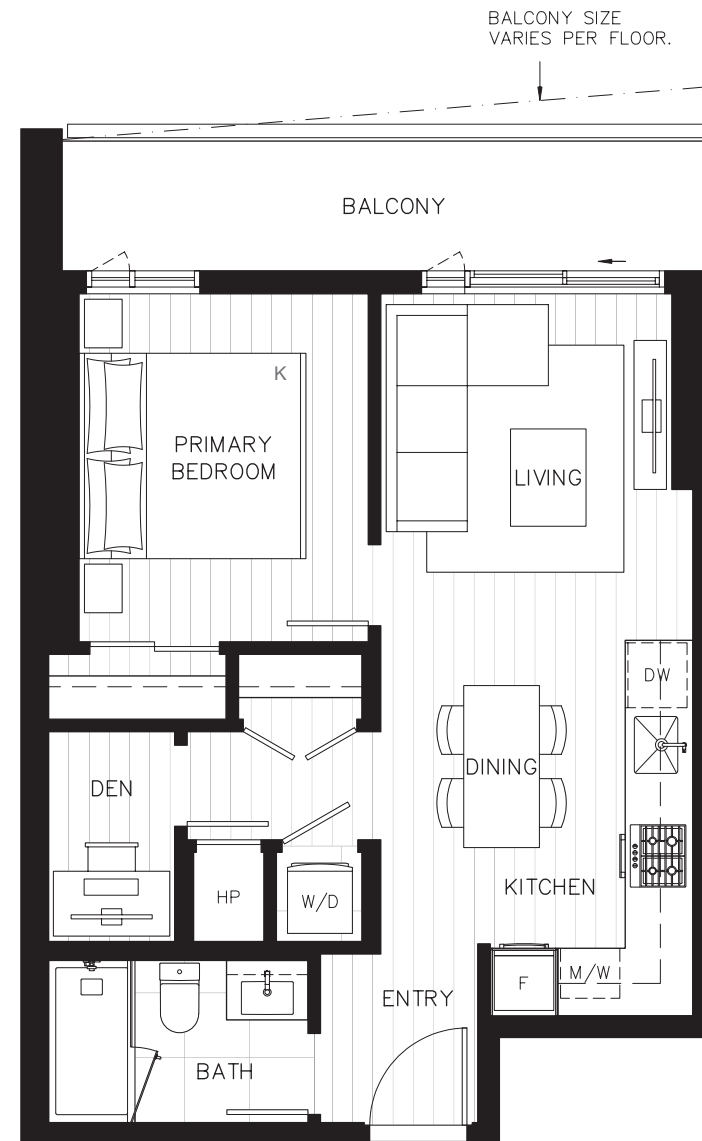
# ETHOS

METROTOWN

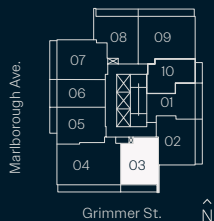
## PLAN D1

1 BEDROOM + DEN

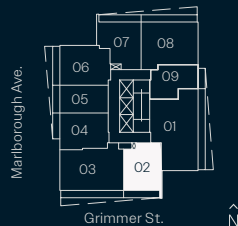
Interior: 544 sf  
Exterior: 83 - 99 sf  
Total: 627 - 643 sf



LEVEL 10



LEVEL 11-33



The developer reserves the right to make changes and modifications to the information contained herein. Floorplans and floorplates are subject to change without notice. Please contact a developer sales representative for details. This is not an offering for sale, as an offering can only be made after the filing of a disclosure statement, and only in jurisdictions where qualified in accordance with applicable local laws. E.&O.E.

**Anthem**

# ETHOS

METROTOWN

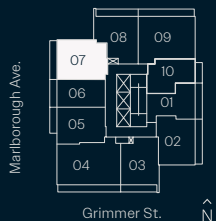
## PLAN D2

1 BEDROOM + DEN

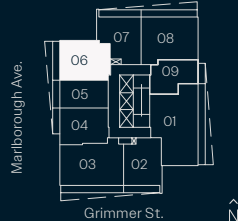
Interior: 604 sf  
Exterior: 87 - 160 sf  
Total: 691 - 764 sf



LEVEL 10



LEVEL 11-33



The developer reserves the right to make changes and modifications to the information contained herein. Floorplans and floorplates are subject to change without notice. Please contact a developer sales representative for details. This is not an offering for sale, as an offering can only be made after the filing of a disclosure statement, and only in jurisdictions where qualified in accordance with applicable local laws. E.&O.E.

**Anthem**

# ETHOS

METROTOWN

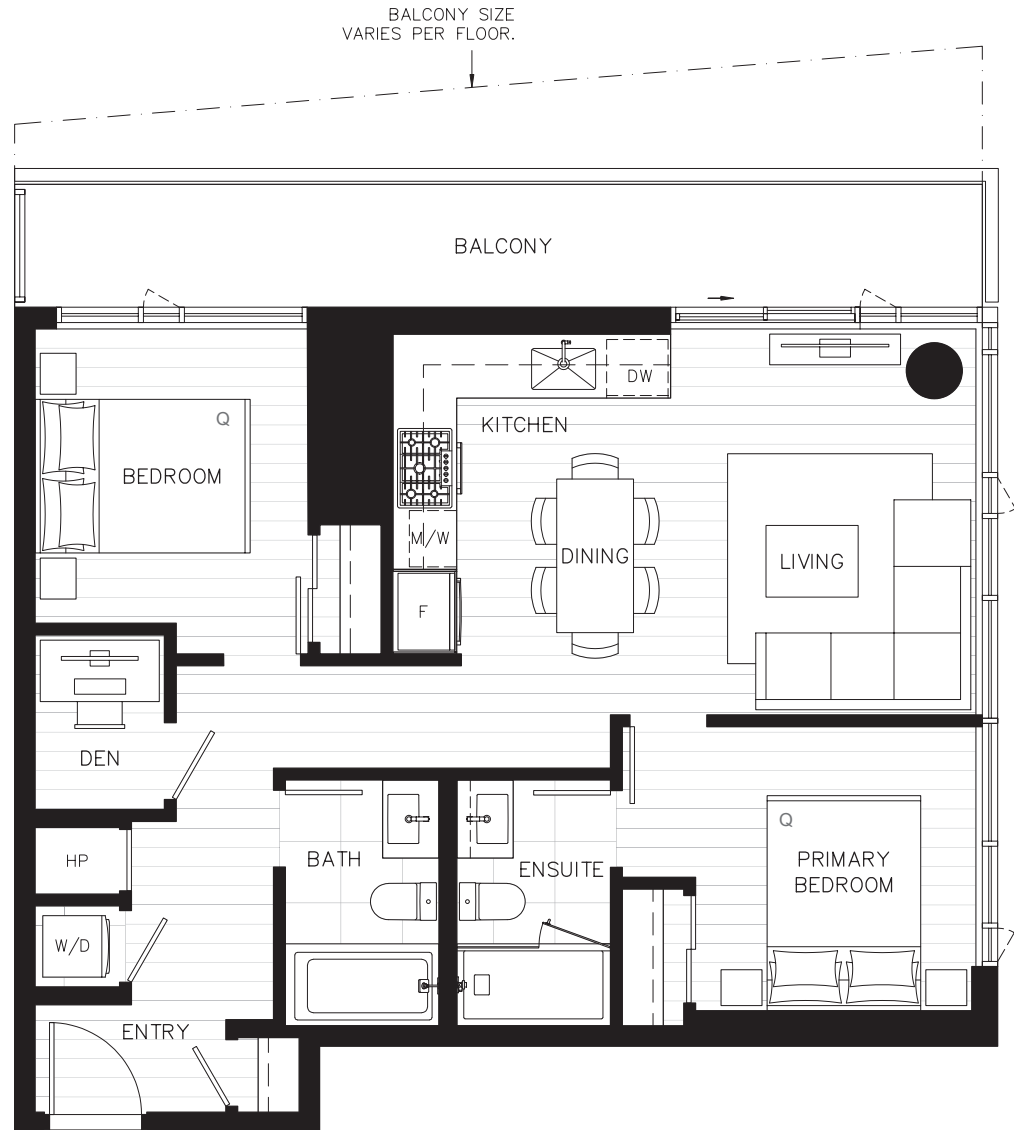
## PLAN E

2 BEDROOM + DEN

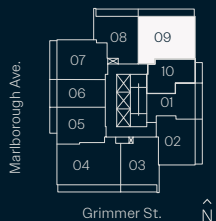
Interior: 781 sf

Exterior: 125 - 221 sf

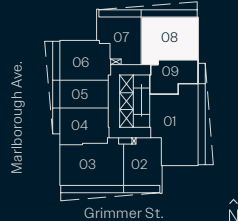
Total: 906 - 1,002 sf



LEVEL 10



LEVEL 11-33



The developer reserves the right to make changes and modifications to the information contained herein. Floorplans and floorplates are subject to change without notice. Please contact a developer sales representative for details. This is not an offering for sale, as an offering can only be made after the filing of a disclosure statement, and only in jurisdictions where qualified in accordance with applicable local laws. E.&O.E.

**Anthem**

# ETHOS

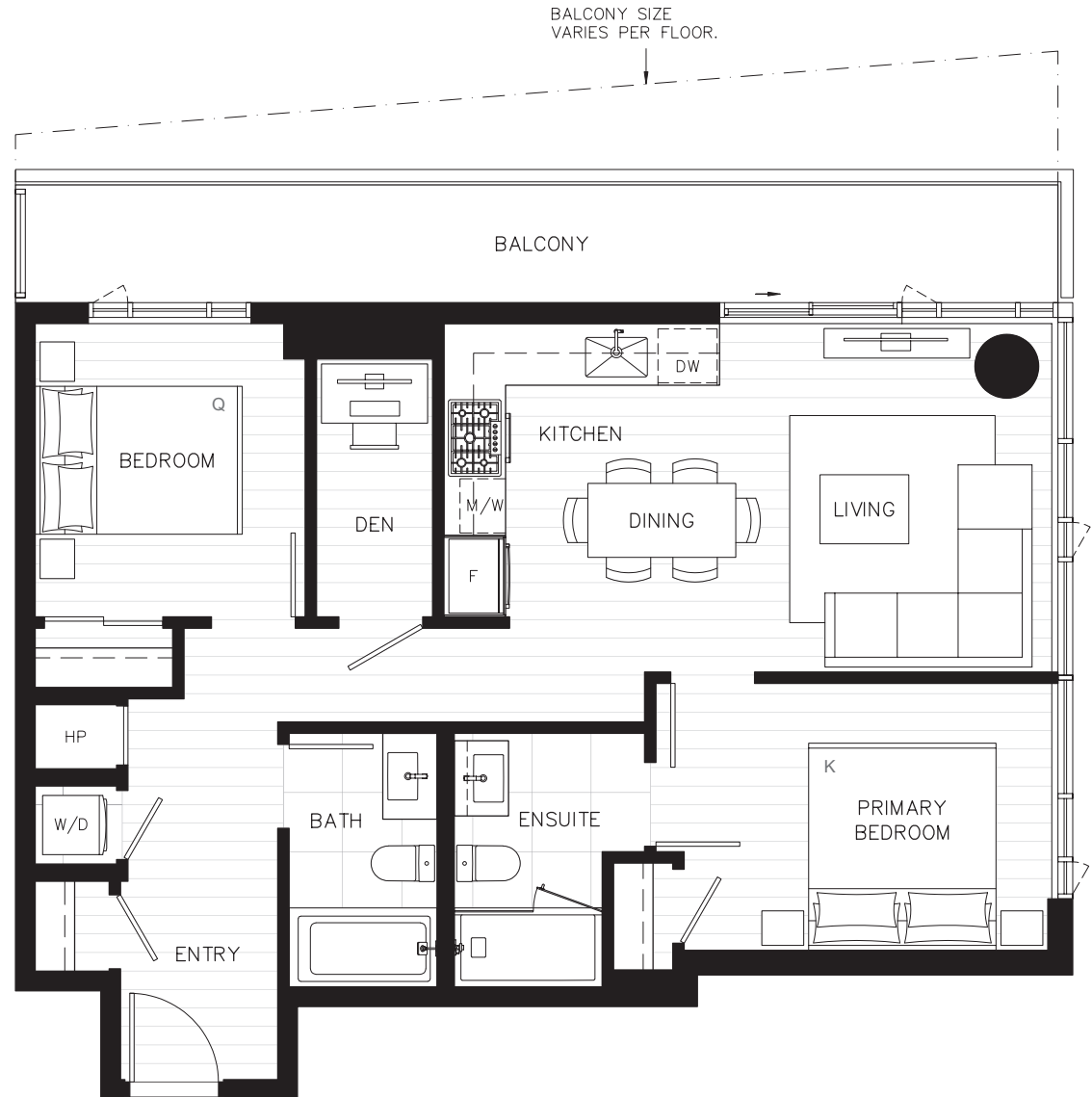
METROTOWN

## PLAN E1-A

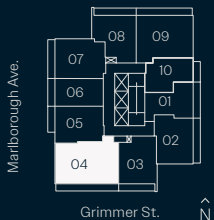
2 BEDROOM + DEN

Interior: 853 sf  
Exterior: 142 - 245 sf  
Total: 995 - 1,098 sf

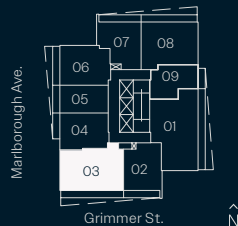
Adaptable home



LEVEL 10



LEVEL 11-33



The developer reserves the right to make changes and modifications to the information contained herein. Floorplans and floorplates are subject to change without notice. Please contact a developer sales representative for details. This is not an offering for sale, as an offering can only be made after the filing of a disclosure statement, and only in jurisdictions where qualified in accordance with applicable local laws. E.&O.E.

**Anthem**



# ETHOS

METROTOWN

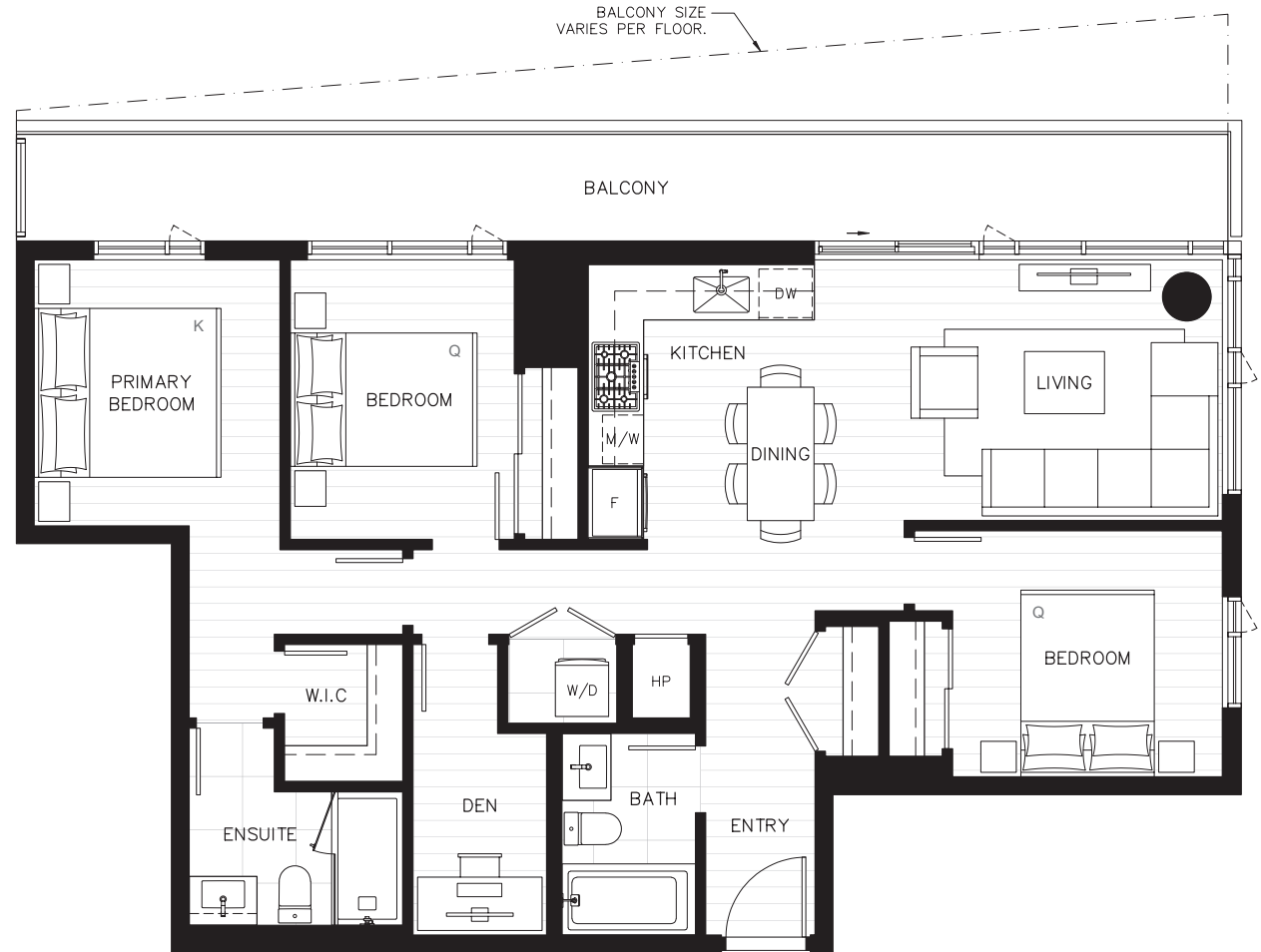
## PLAN F

3 BEDROOM + DEN

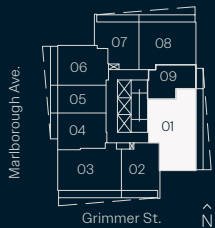
Interior: 1,034 sf

Exterior: 182 - 298 sf

Total: 1,216 - 1332 sf



LEVEL 11-33



The developer reserves the right to make changes and modifications to the information contained herein. Floorplans and floorplates are subject to change without notice. Please contact a developer sales representative for details. This is not an offering for sale, as an offering can only be made after the filing of a disclosure statement, and only in jurisdictions where qualified in accordance with applicable local laws. E.&O.E.

**Anthem**