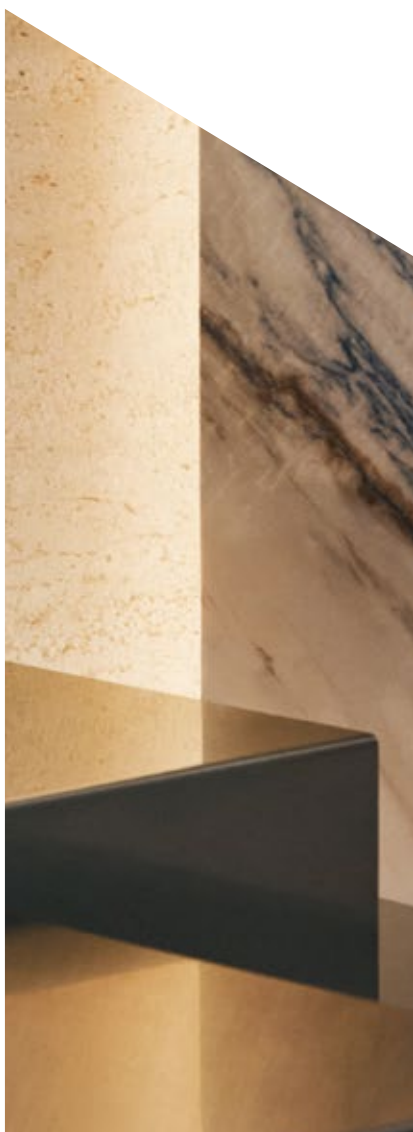


A QUINTESSENTIAL RESIDENCE



# ETHOS

METROTOWN

ETHOSBYANTHEM.COM





# OUT OF MANY, ONE

ONE RESIDENCE. ONE LIFE.  
ONE ETHOS.

In a city of untold places and experiences, one residence stands unique. Amongst thousands of lives, you emerge as one individual. A character shaped by principles — your ethos. Directed by the values of a proven Metrotown placemaker, Ethos is a quintessential residence by Anthem.

ETHOS

BY ANTHEM



# THE WORLD WITHIN IS INFLUENCED BY THE WORLD BEYOND

A serene collection of homes at Metrotown's eastern gateway reflects and shapes who you are. A place where life is nourishing, diverse, beautiful. Where nature is expressed in natural materials, greenery and water features. A home with an innate elegance.

ETHOS

BY ANTHEM





# A PLACE OF MANY PARTS, TOGETHER

6

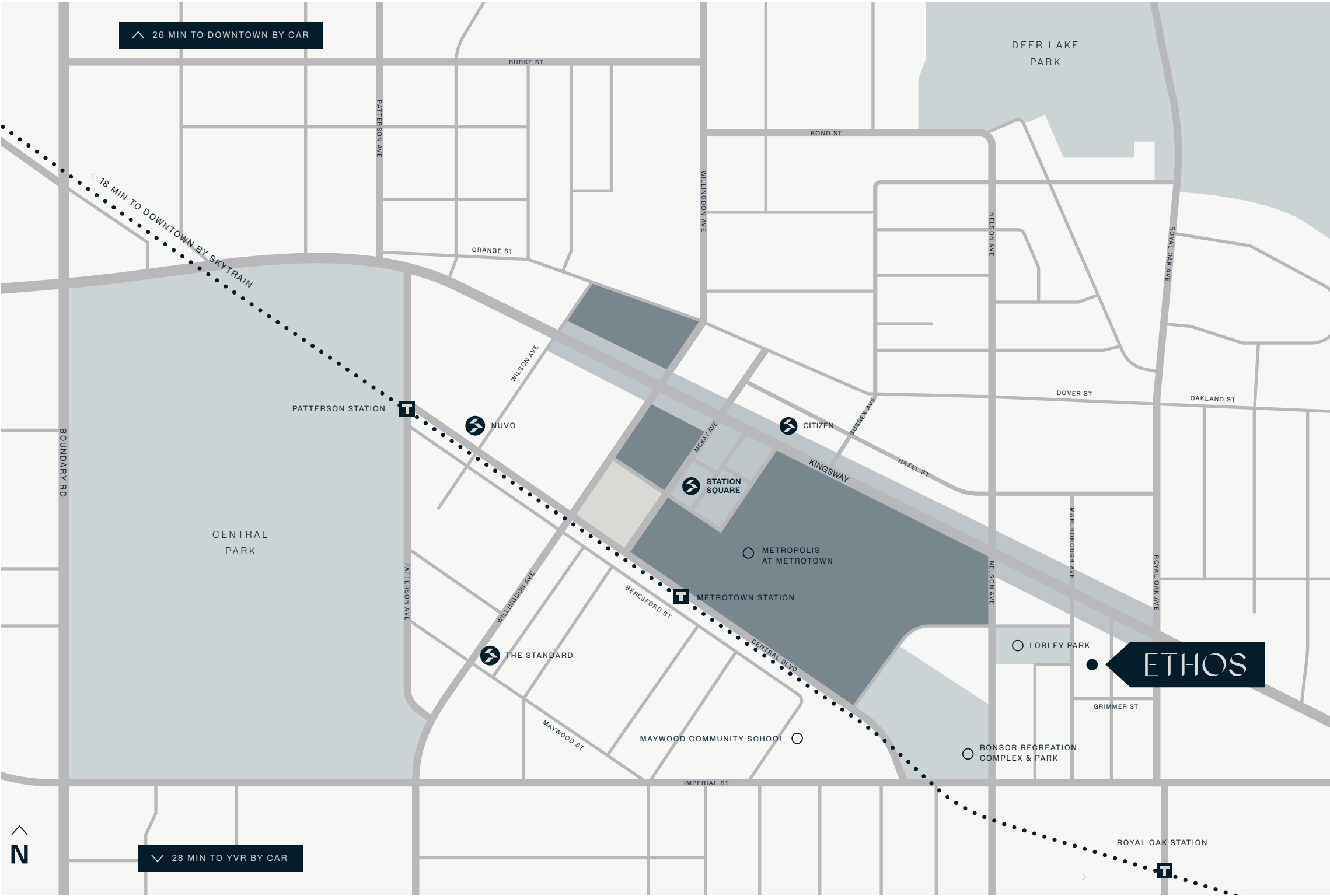


7



LOCATION

METROTOWN'S PEACEFUL EASTERN GATEWAY IS EVOLVING. HOME IS SURROUNDED BY A RICH ECOSYSTEM OF CULTURE, CONVENIENCE, NATURE AND INSPIRATION.



Live adjacent to the happenings of a bustling urban core in a neighbourhood on Metrotown's perimeter. In this quiet pocket, life is as unhurried as you please. And vibrant when you want it. Modern transit, the day's essentials, entertainment, art, cuisine and green spaces — all a short walk from home.

Ethos' immediate community continues to evolve, shaped by those seeking substance. A place inspired by its people. By you.

Commune deeply with the worlds around you. And be a character in Metrotown's evolution.

- PARKS & RECREATION
- RESTAURANT ROW
- SHOPPING, ENTERTAINMENT & CULTURE DISTRICT
- SKYTRAIN

# ANTHEM'S METROTOWN EVOLUTION



10

11

TWO DECADES OF METROTOWN PLACEMAKING. A TRUSTED PARTNER IN A CITY'S DRAMATIC GROWTH. OUR UNWAVERING ETHOS FOR MEANINGFUL CHANGE.

In the geographic centre of Metro Vancouver, Metrotown forms a vital hub of business, community and transportation. Anthem's relationship with the growing city began with Station Square 20 years ago. Since then, we have invested in, developed or managed 900,000 sq. ft. of commercial real estate and over 6,500 homes in Burnaby. We echo Burnaby's spirit of growth. And passionately contribute to the making of one of Metro Vancouver's most important urban centres. Ethos will be the fifth chapter in Anthem's Metrotown Collection — together, a significant story for the city.





ETHOS

# GUIDED BY AN EVER-PRESENT MUSE

A symbol of purity.  
In its quiet enclave,  
Ethos signals you to breathe.  
To clear thoughts.  
To move instinctively.

To simply be.

BY ANTHEM



A GRACEFUL WHITE FORM CLIMBS 34 STOREYS  
IN A SUBTLE PINWHEEL ALIGNMENT, IMPLYING  
MOVEMENT AND EVOLUTION. TIMELESS  
ARCHITECTURE, QUALITY CONSTRUCTION  
AND ENDURING CRAFTSMANSHIP – PART OF  
ANTHEM'S PROMISE AND ETHOS.



On the ground, the original wetlands that once stretched across this land are reimagined by local artists Tsēmā and Jonathan Igharas. A field of bronze cranberry vines rises from a pond dotted with moss-like stones, expressive clouds drift across the entry soffit and metal cattails appear to move in the breeze on gates and balconies.

Shades of green bloom from a pocket park and sun garden, enclosing Ethos in nature, shaping an oasis. Here, your life imitates art — meaningful and tranquil.





← West

↖ Northwest

North ↑



ETHOS

BY ANTHEM



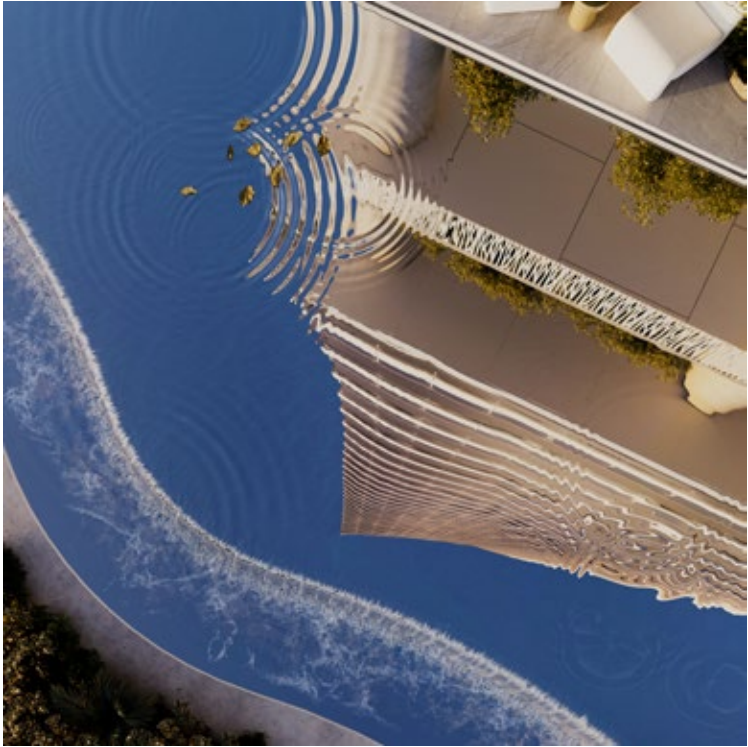
# LIFE THROUGH A LENS OF CURIOSITY

18



Lobby With Concierge

ETHOS



19

EXPLORE THE BEAUTY, INVIGORATION  
AND CONTENTMENT OF LIVING WELL.

Known for imagining evocative spaces, Ste. Marie Studio eloquently conceived both lobby and amenities at Ethos. Warm natural textures, patterns and palettes — beautiful contrasts for the building’s pure-white façade. Gold accents, imaginative lighting and bold art further define the spaces. The character of place is as expressive and intriguing as its inhabitants — with an aura of calmness as you draw near.

BY ANTHEM



AMENITIES

15,000 SQUARE FEET OF THOUGHTFUL AMENITIES. IMMERSIVE PLACES TO PRACTICE WELLBEING.

Amenities kindle the desire to live expansively. Exchange stories with friends and neighbours in multiple indoor and outdoor lounges. Prioritize play on the billiards and Ping-Pong tables. Gather around a long harvest table for inspired dining. Fuel creativity in a co-work lounge and podcast room. Pursue activities and moments that awaken the spirit.

20



Outdoor Lounge and Dining

ETHOS



Games Room

21



Private Dining

BY ANTHEM





Fitness Studio



Barrel Sauna

A revival of the body and mind transpires daily. Erase the day's stresses in the barrel sauna or in the gym. Stretch with intention in the yoga studio. Experience a moment of Zen in the sun garden. Pause. Reflect. Transform.



# YOUR TRUEST SELF EMERGES AT HOME

24



ETHOS

25



The inner sanctum is where other worlds fall away. The mask drops. You become who you are meant to be. A creator of your own reality — in generous spaces that accentuate livability and style.

BY ANTHEM





Dark Scheme

Sophistication and practicality are equals in the kitchen. Minimal lines and tonal contrasts create interest. Efficient layouts and quality maximize function. Premium integrated appliances by Bosch, including a gas cooktop, streamline the cooking experience. A tactile backsplash conveys an elegant Scandinavian-inspired aesthetic. Storage is plentiful, and includes concealed recycling and magic corner systems in most homes. A setting for sustenance and togetherness.





28



Dark Scheme



Light Scheme

A sanctuary for renewal. Warm, natural materials exhibit substance and longevity. Rejuvenate within a walk-in shower, complete with a tiled niche and both rainfall and wand shower fixtures. A millwork vanity with under-cabinet lighting appears to float, and contains an abundance of storage. An emotive, timeless and soothing experience.

29





OVERALL COMMUNITY

- Return to the serene embrace of your home when living in Anthem’s newest community, Ethos – a distinct tower that elevates the architectural landscape of the burgeoning Metrotown skyline with its striking rectilinear expressions
- Approximately 15,000 sf of indoor /outdoor amenity space that has been designed to enrich the lives of its residents, providing authentic opportunities for wellness, creativity, and social interaction
- Architecture by award winning GBL Architects and interiors by world renowned Ste. Marie Studios
- Market residential homes starting from level 10
- Organically designed reception with double height lobby, concierge, parcel and cold storage for deliveries, and guest soft seating
- Integrated public art by B.C. artists Tsēmā and Jonathan Igharas within a large reflecting pond, Fenhaven, inspired by the natural flora of Metrotown

INTERIORS

- The world within is inspired by the world beyond, materials and finishes inspire a peaceful inner presence
- Two colour scheme options available: Light & Dark
- Contemporary laminate wood flooring throughout the main living areas and bedrooms
- Roller-blind window coverings for light control and privacy, with blackout roller-shades in bedrooms
- Energy efficient front-loading stacked washer and dryer
- Spacious living and dining areas with 9' ceilings and oversized windows
- Central air cooling and heating for year-round comfort
- Expansive balconies for integrated indoor-outdoor living and natural light

KITCHENS

- Full height European inspired soft-close laminate cabinets with premium recessed pulls and under cabinet LED lighting
- Sleek neutral tone upper cabinets complement the warmth of wood grain lower cabinets
- Engineered quartz stone countertops
- Tactile kitchen backsplash inspired by contemporary Scandinavian elegance
- Undermount stainless steel sink with polished chrome faucet and pullout vegetable sprayer
- Integrated Bosch appliance package features\*:
  - Gas cooktop
  - Electric wall oven
  - Fridge with bottom mount freezer
  - 24” dishwasher (all homes)
- Panasonic microwave with trim kit
- High efficiency built-in AEG range hood fan
- Integrated pullout recycling station
- Magic corner storage system\*\* for easy kitchen organization

\* 24” appliance package for Studios to 1-bedroom homes

\* 30” appliance package for 2-bedroom and larger homes

\*\* Select plans only

BATHROOMS

- Soft close millwork laminate vanity
- Serene large format porcelain wall and floor tile
- Elegant engineered quartz countertop
- Deep soaker tub in 2nd and 3rd bathrooms
- Laufen dual-flush toilet
- Primary bathrooms and ensuites feature:
  - Walk-in shower with glass enclosure and tiled niche
  - Rainfall shower and shower wand combo
  - Custom millwork medicine cabinet with under cabinet LED lighting

AMENITIES

- Approximately 15,000 sf of indoor and outdoor amenity spaces
- Fitness and wellness room with fully equipped gym, yoga room and stand-alone barrel sauna
- Focus/podcast room, co-working space and meeting room
- Indoor entertainment lounge complete with kitchen and formal dining hall
- Indoor and outdoor games area with BBQ and fireside lounge offer year-round entertainment
- Tranquil reflecting pond with public art
- Sun garden for zen and inner peace
- Car wash and bicycle repair station
- Outdoor children’s play area
- Concierge with secure parcel and cold storage
- Pet wash station

PEACE OF MIND

- 2-5-10 New Home Warranty
- Secure building entry system with entry phone, security cameras and key fob entry
- EV-capable, future ready parking
- Secure bicycle storage
- Expertly developed and built by Anthem
- Industry-leading homeowner care provided by Anthem

The developer reserves the right to make changes and modifications to the information contained herein. Floorplans and floorplates are subject to change without notice. Please contact a developer sales representative for details. This is not an offering for sale, as an offering can only be made after the filing of a disclosure statement, and only in jurisdictions where qualified in accordance with applicable local laws. E.&O.E.



# ETHOS

METROTOWN

## FLOORPLATE Level 11 - 33



Marlborough Ave.

Grimmer St.

07 - PLAN C1-A  
1 BEDROOM  
Interior: 558 sf  
Exterior: 98 - 122 sf  
Total: 656 - 680 sf  
Adaptable home

08 - PLAN E  
2 BEDROOM + DEN  
Interior: 781 sf  
Exterior: 125 - 221 sf  
Total: 906 - 1,002 sf

09 - PLAN A  
STUDIO  
Interior: 439 sf  
Exterior: 43 - 48 sf  
Total: 482 - 487 sf

01 - PLAN F  
3 BEDROOM + DEN  
Interior: 1,034 sf  
Exterior: 182 - 298 sf  
Total: 1,216 - 1,332 sf

02 - PLAN D1  
1 BEDROOM + DEN  
Interior: 544 sf  
Exterior: 83 - 99 sf  
Total: 627 - 643 sf

06 - PLAN D2  
1 BEDROOM + DEN  
Interior: 604 sf  
Exterior: 87 - 160 sf  
Total: 691 - 764 sf

05 - PLAN B  
JR. 1 BEDROOM  
Interior: 412 sf  
Exterior: 61 - 89 sf  
Total: 473 - 501 sf

04 - PLAN D  
1 BEDROOM + DEN  
Interior: 538 sf  
Exterior: 58 - 67 sf  
Total: 596 - 605 sf

03 - PLAN E1-A  
2 BEDROOM + DEN  
Interior: 853 sf  
Exterior: 142 - 245 sf  
Total: 995 - 1,098 sf  
Adaptable home



The developer reserves the right to make changes and modifications to the information contained herein. Floorplans and floorplates are subject to change without notice. Please contact a developer sales representative for details. This is not an offering for sale, as an offering can only be made after the filing of a disclosure statement, and only in jurisdictions where qualified in accordance with applicable local laws. E.&O.E.



# ETHOS

METROTOWN

## PLAN A

STUDIO

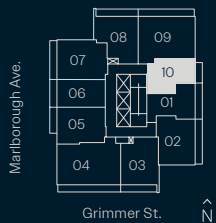
Interior: 439 sf

Exterior: 43 - 48 sf

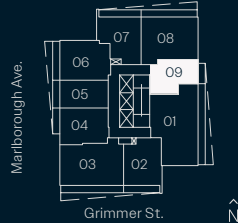
Total: 482 - 487 sf



LEVEL 10



LEVEL 11-33



The developer reserves the right to make changes and modifications to the information contained herein. Floorplans and floorplates are subject to change without notice. Please contact a developer sales representative for details. This is not an offering for sale, as an offering can only be made after the filing of a disclosure statement, and only in jurisdictions where qualified in accordance with applicable local laws. E.&O.E.

**Anthem**



# ETHOS

METROTOWN

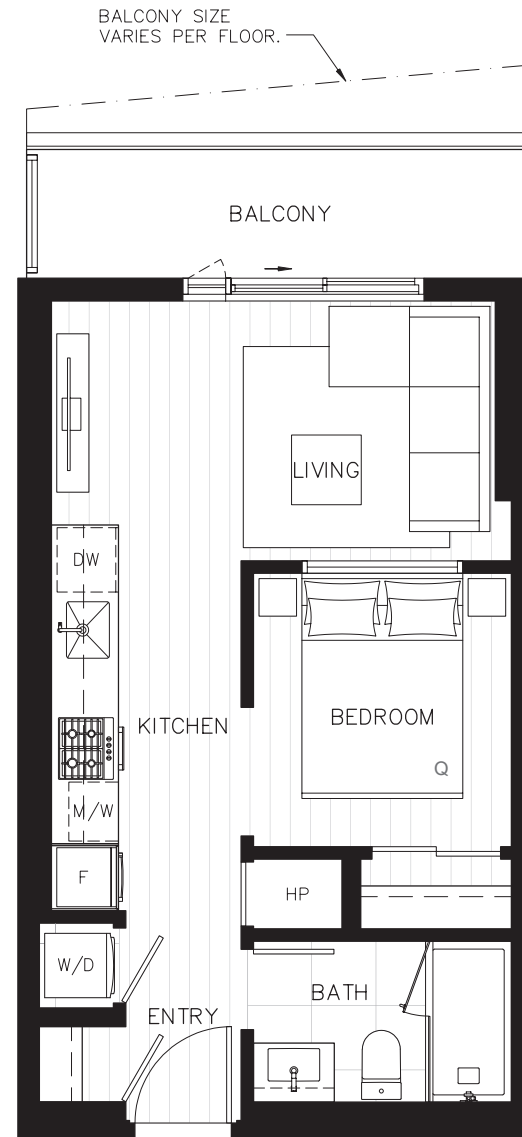
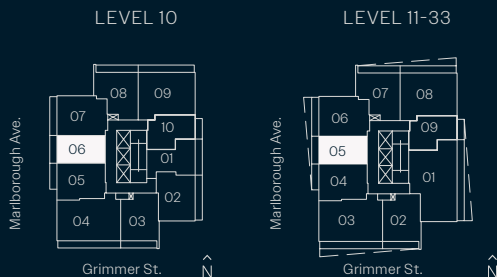
## PLAN B

JR. 1 BEDROOM

Interior: 412 sf

Exterior: 61 - 89 sf

Total: 473 - 501 sf



The developer reserves the right to make changes and modifications to the information contained herein. Floorplans and floorplates are subject to change without notice. Please contact a developer sales representative for details. This is not an offering for sale, as an offering can only be made after the filing of a disclosure statement, and only in jurisdictions where qualified in accordance with applicable local laws. E.&O.E.



# ETHOS

METROTOWN

## PLAN C1-A

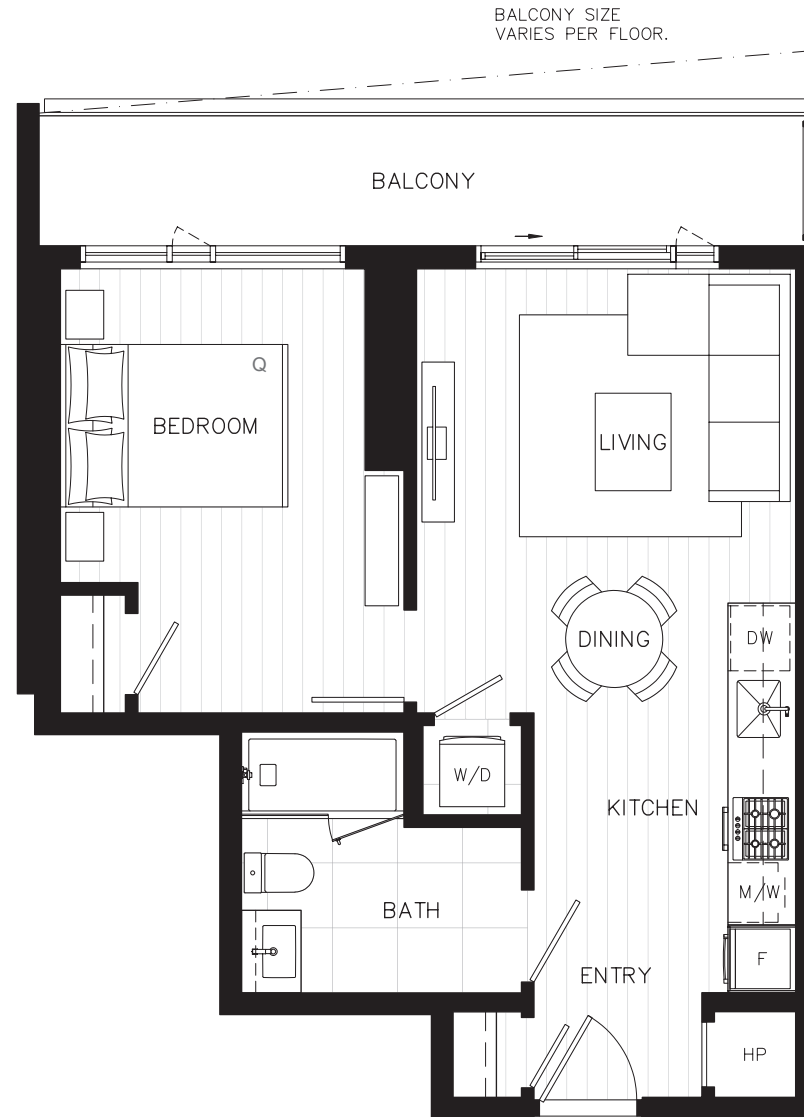
1 BEDROOM

Interior: 558 sf

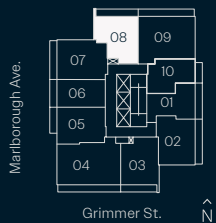
Exterior: 98 - 122 sf

Total: 656 - 680 sf

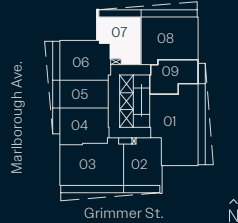
Adaptable home



LEVEL 10



LEVEL 11-33



The developer reserves the right to make changes and modifications to the information contained herein. Floorplans and floorplates are subject to change without notice. Please contact a developer sales representative for details. This is not an offering for sale, as an offering can only be made after the filing of a disclosure statement, and only in jurisdictions where qualified in accordance with applicable local laws. E.&O.E.

**Anthem**

# ETHOS

METROTOWN

## PLAN D

1 BEDROOM + DEN

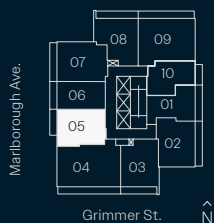
Interior: 538 sf

Exterior: 58 - 67 sf

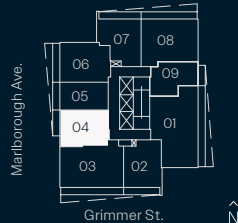
Total: 596 - 605 sf



LEVEL 10



LEVEL 11-33



The developer reserves the right to make changes and modifications to the information contained herein. Floorplans and floorplates are subject to change without notice. Please contact a developer sales representative for details. This is not an offering for sale, as an offering can only be made after the filing of a disclosure statement, and only in jurisdictions where qualified in accordance with applicable local laws. E.&O.E.



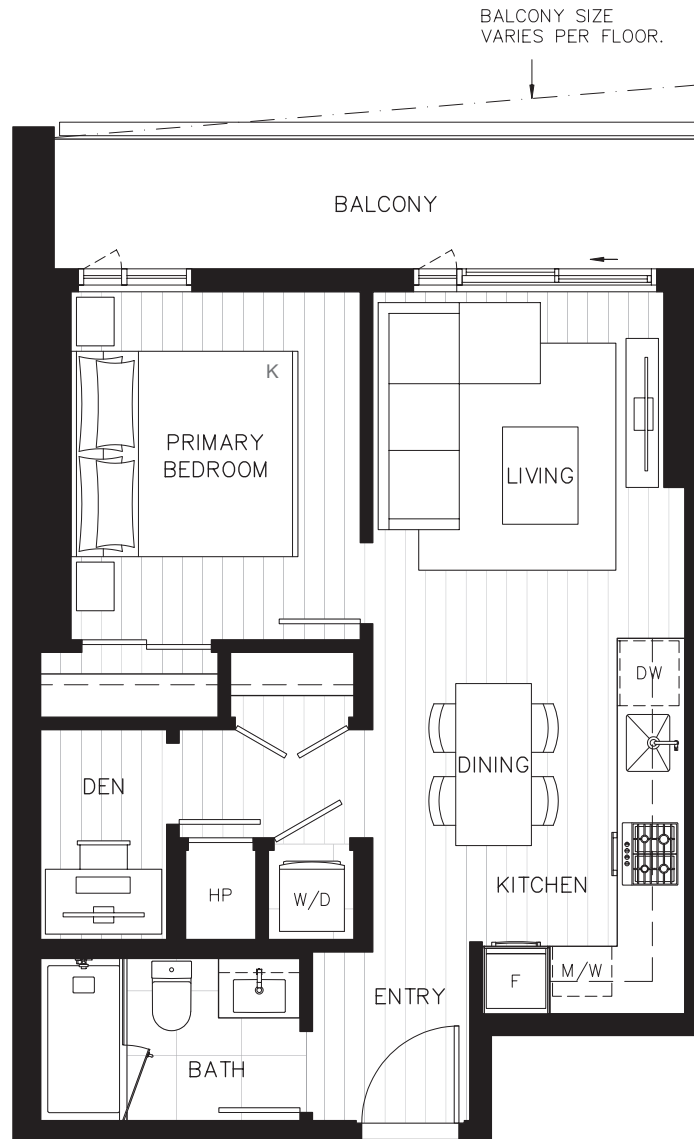
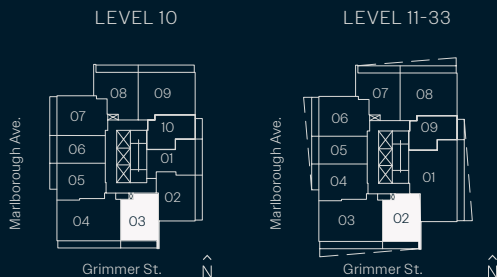
# ETHOS

METROTOWN

## PLAN D1

1 BEDROOM + DEN

Interior: 544 sf  
Exterior: 83 - 99 sf  
Total: 627 - 643 sf



The developer reserves the right to make changes and modifications to the information contained herein. Floorplans and floorplates are subject to change without notice. Please contact a developer sales representative for details. This is not an offering for sale, as an offering can only be made after the filing of a disclosure statement, and only in jurisdictions where qualified in accordance with applicable local laws. E.&O.E.

**Anthem**

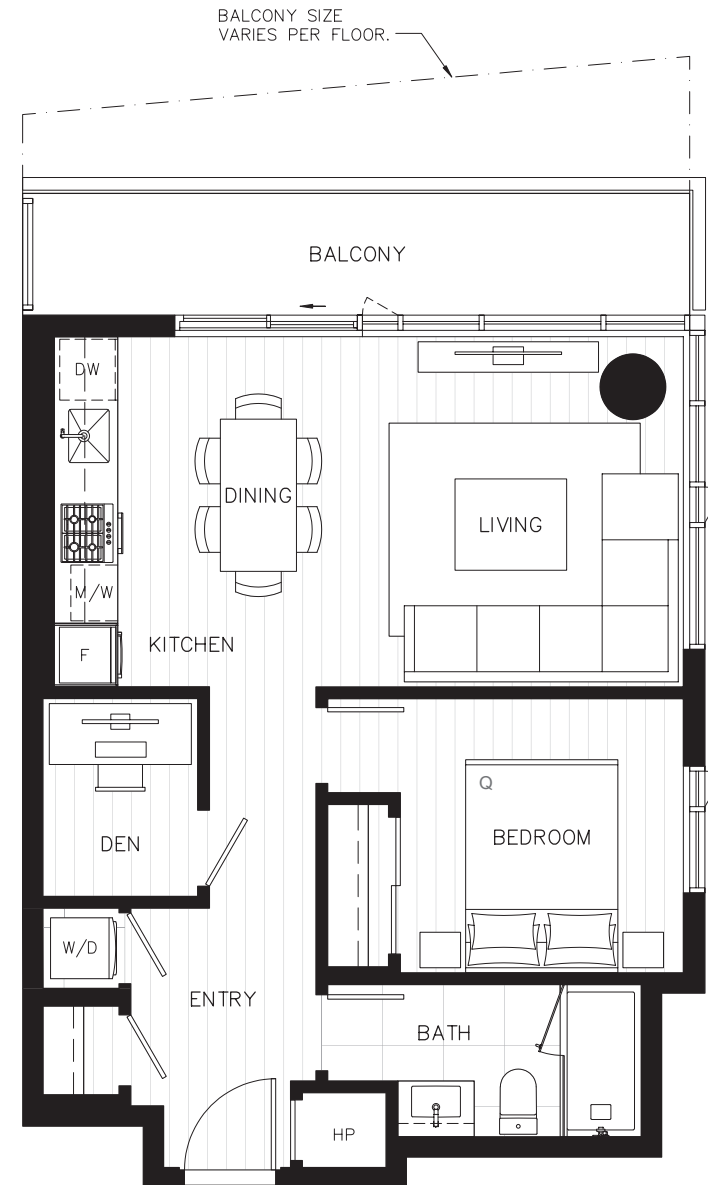
# ETHOS

METROTOWN

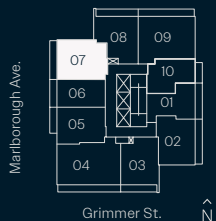
## PLAN D2

1 BEDROOM + DEN

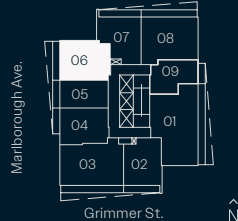
Interior: 604 sf  
Exterior: 87 - 160 sf  
Total: 691 - 764 sf



LEVEL 10



LEVEL 11-33



The developer reserves the right to make changes and modifications to the information contained herein. Floorplans and floorplates are subject to change without notice. Please contact a developer sales representative for details. This is not an offering for sale, as an offering can only be made after the filing of a disclosure statement, and only in jurisdictions where qualified in accordance with applicable local laws. E.&O.E.

**Anthem**



# ETHOS

METROTOWN

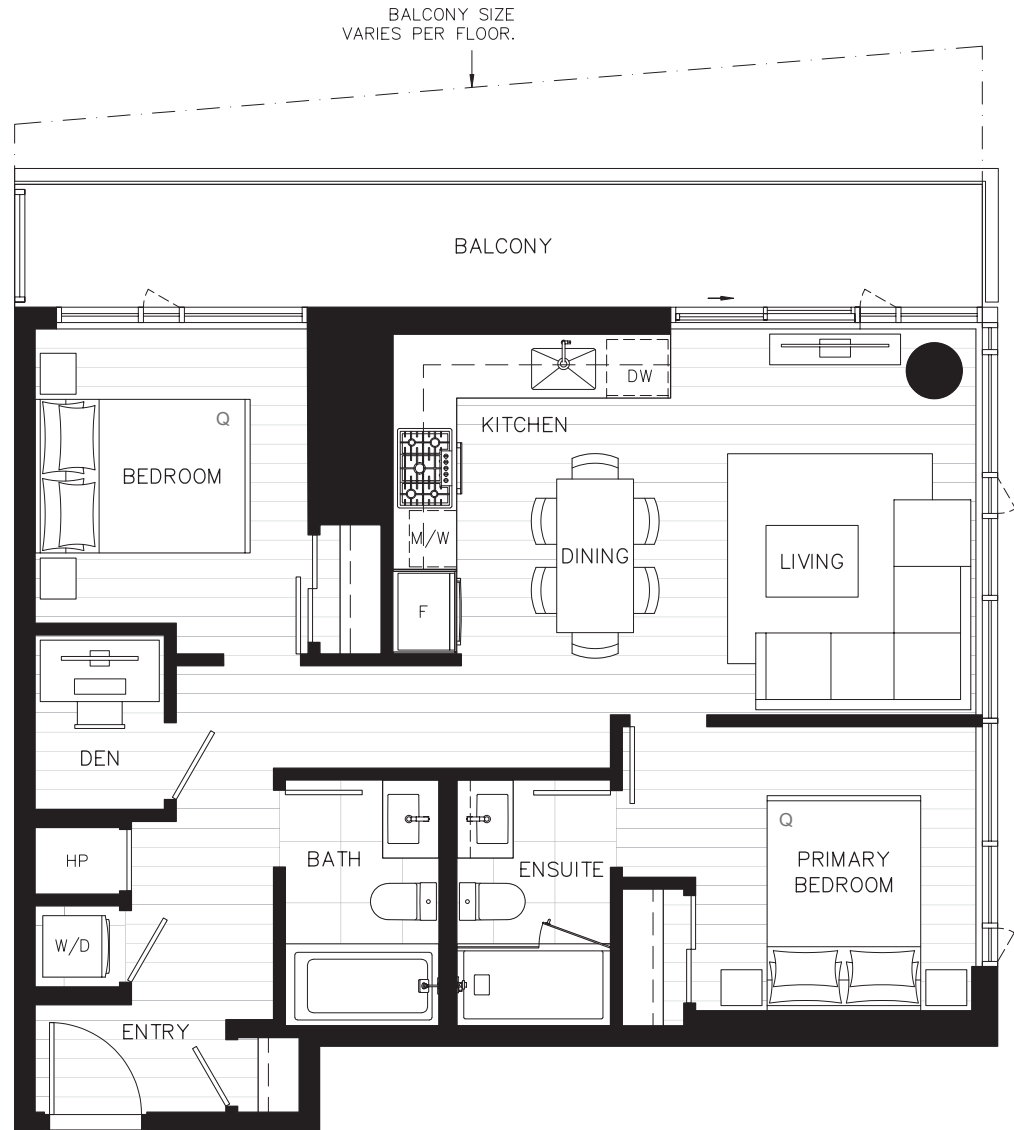
## PLAN E

2 BEDROOM + DEN

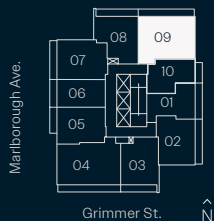
Interior: 781 sf

Exterior: 125 - 221 sf

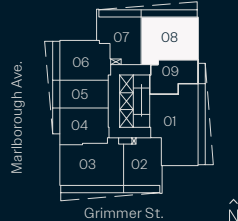
Total: 906 - 1,002 sf



LEVEL 10



LEVEL 11-33



The developer reserves the right to make changes and modifications to the information contained herein. Floorplans and floorplates are subject to change without notice. Please contact a developer sales representative for details. This is not an offering for sale, as an offering can only be made after the filing of a disclosure statement, and only in jurisdictions where qualified in accordance with applicable local laws. E.&O.E.

**Anthem**

# ETHOS

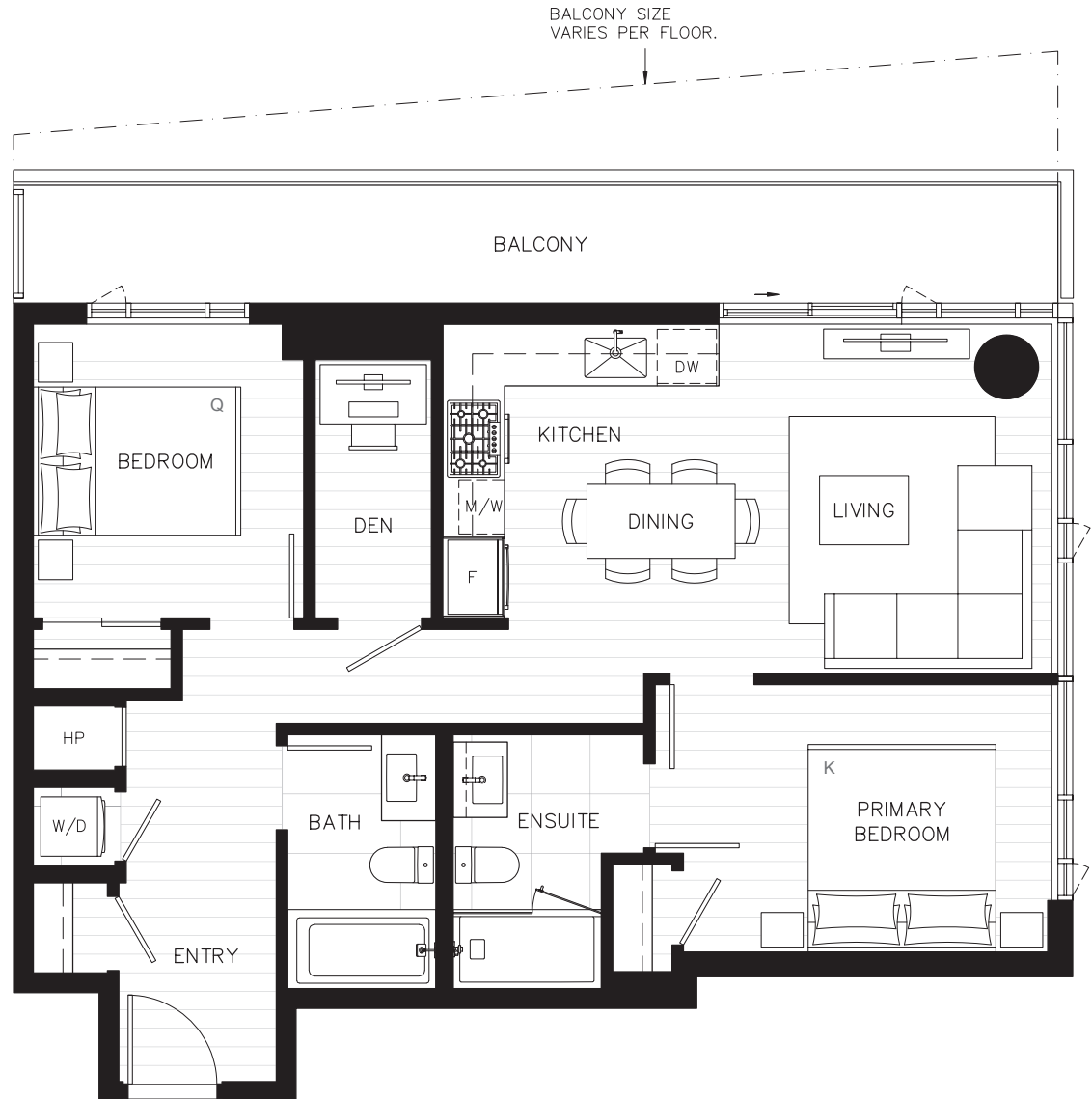
METROTOWN

## PLAN E1-A

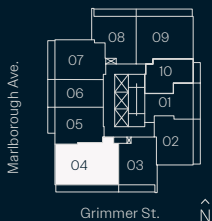
2 BEDROOM + DEN

Interior: 853 sf  
Exterior: 142 - 245 sf  
Total: 995 - 1,098 sf

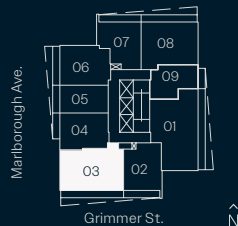
Adaptable home



LEVEL 10



LEVEL 11-33



The developer reserves the right to make changes and modifications to the information contained herein. Floorplans and floorplates are subject to change without notice. Please contact a developer sales representative for details. This is not an offering for sale, as an offering can only be made after the filing of a disclosure statement, and only in jurisdictions where qualified in accordance with applicable local laws. E.&O.E.

**Anthem**



# ETHOS

METROTOWN

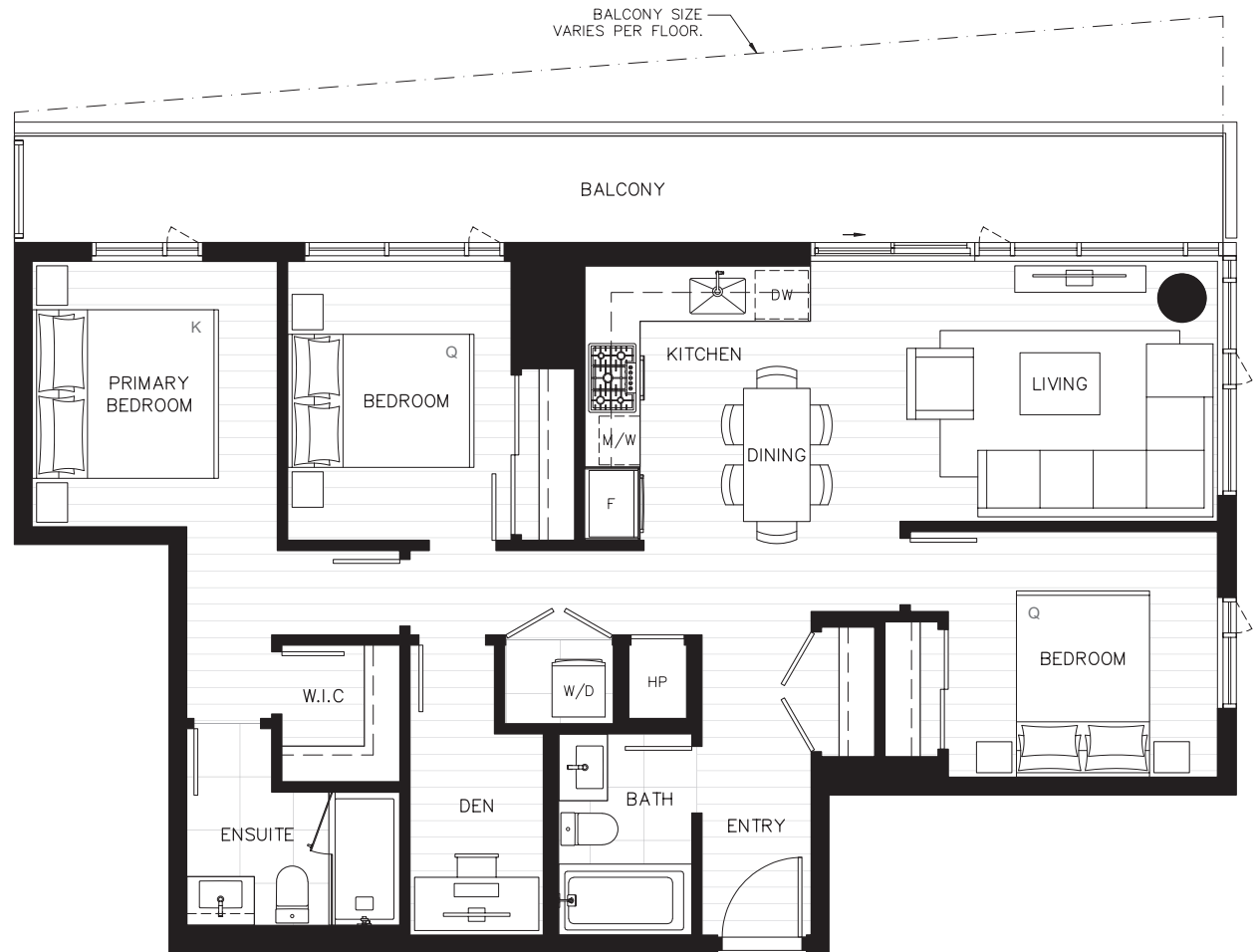
## PLAN F

3 BEDROOM + DEN

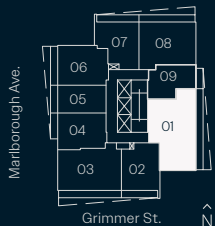
Interior: 1,034 sf

Exterior: 182 - 298 sf

Total: 1,216 - 1332 sf

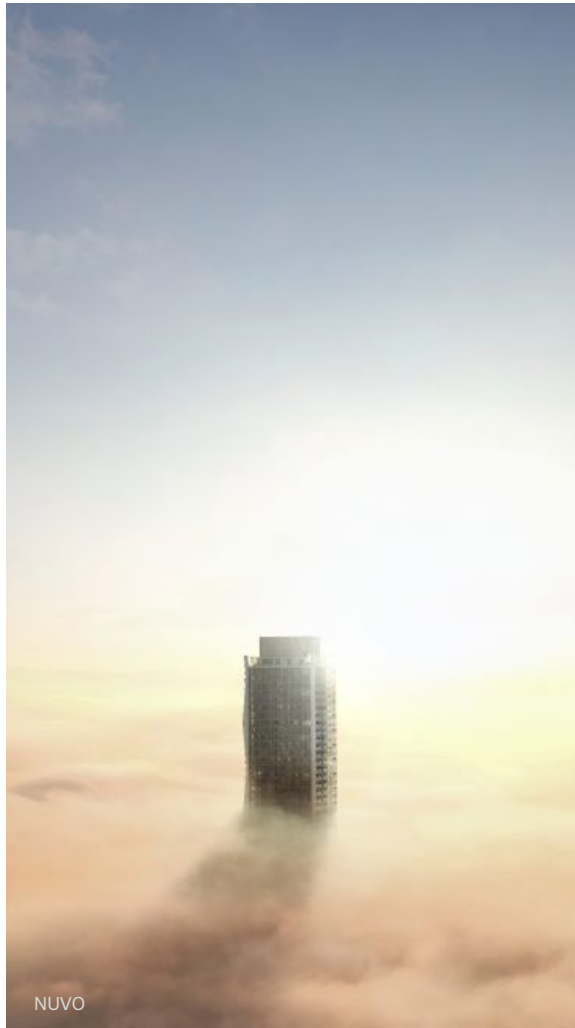


LEVEL 11-33



The developer reserves the right to make changes and modifications to the information contained herein. Floorplans and floorplates are subject to change without notice. Please contact a developer sales representative for details. This is not an offering for sale, as an offering can only be made after the filing of a disclosure statement, and only in jurisdictions where qualified in accordance with applicable local laws. E.&O.E.

**Anthem**



NUVO



The Standard



Citizen

# Anthem

Founded in 1991, Anthem is a team of more than 600 people driven by creativity, passion and direct communication. Anthem has invested in, developed or managed – alone or in partnership – more than 350 residential, commercial and retail projects across western North America.

Our growing residential portfolio includes 21,500 homes that are complete, in design or under construction, from master planned mixed use residential and multifamily, to townhome, rental and single family communities.

We own, co-own, manage or have previously owned over 10 million square feet of retail, industrial and office space. We have developed more than 60 communities across 9,000 acres of land in Alberta, British Columbia and California.

Anthem is a real estate development, investment and management company that strives, solves and evolves to create better spaces and stronger communities.

We are Growing Places.



# PRESENCE IS INEVITABLE



ETHOS

The developer (Anthem Marlborough Developments Ltd.) reserves the right to make changes and modifications to the information contained herein. Maps, views, photography, and renderings are representational only and are not necessarily accurate, and final design, construction, and features may differ. Floor plans, layouts, finishes, prices, and availability are subject to change without notice. Please contact a developer sales representative for details. This is not an offering for sale, as an offering can only be made after the filing of a disclosure statement, and only in jurisdictions where qualified in accordance with applicable local laws. E. & O.E.

# ETHOS

