

THE PENTHOUSE COLLECTION

CURATED BY STE. MARIE

LANDA
GLOBAL PROPERTIES

RS
ALBERNI
BY FOAD RAFII

AN ADDRESS
BEYOND COMPARE.
LIVE IN LUXURY
ABOVE IT ALL.

FOUR RESIDENCES, ONE COLLECTION.

Only Two Homes per Floor on Levels 20 & 21

180° Views Redefine Your Perspective

Penthouse-Exclusive Interiors by Ste. Marie

Private Elevator Lobby for Each Home

Each Penthouse Features a Private Garage





1818 ALBERNI RISES AT AN ICONIC VANCOUVER ADDRESS

Life on Alberni Street immerses you in the breathtaking natural beauty of Stanley Park and the Pacific oceanfront, with the city's finest restaurants and haute couture shopping at your doorstep.

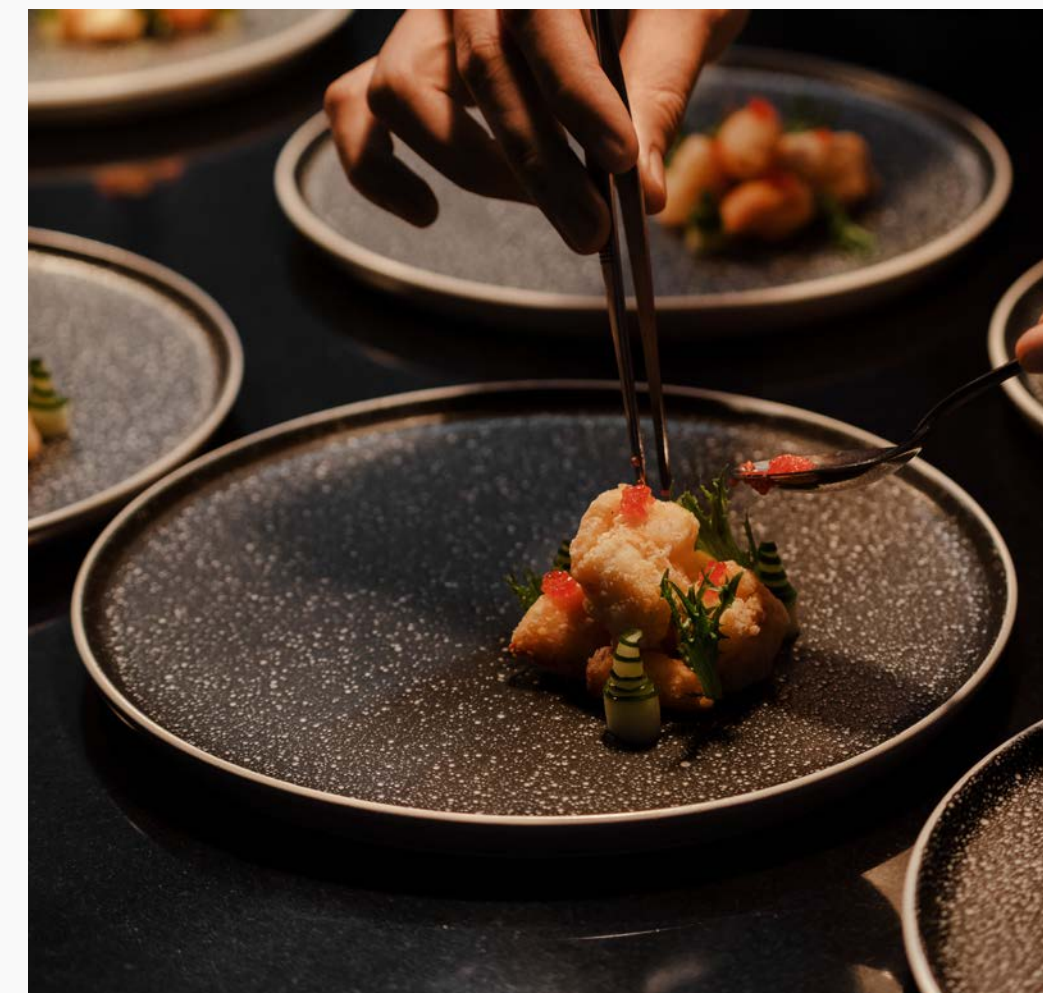
ALBERNI DISTRICT

Where Luxury & Nature Intersect



THE PENTHOUSE COLLECTION





EACH ROOM A RICH STORY. EVERY VIEW A MASTERPIECE.

Penthouse Interiors by Ste. Marie

Each home is imbued with harmony and warmth, from thoughtfully curated materials to spaces crafted to inspire connection and elevate every moment. With an emphasis on spaciousness and timeless design, the Penthouses at 1818 Alberni embody the essence of uncompromised living. At the centre of this vision is the great room, where every window frames a breathtaking skyline of mountains, ocean, and city. It is a space where laughter lingers, evenings stretch long, and every gathering becomes a story unfolding.



COMPOSED TO INSPIRE. DESIGNED TO ENDURE.

Morning light cascades over the cityscape and pours through the windows, offering a warm wake-up call. In its dance, the luxuries of the Penthouse kitchens come to life — veined marble flows throughout, cascading off the island's edges as a sculptural focal point, while white oak becomes a canvas for shadow and light. Each finish is chosen with care, designed to stand the test of time.



THE ART OF GATHERING. THE BEAUTY OF CONNECTION.

A dining room for every occasion. Sliding doors transform the atmosphere, closing to create an intimate setting or opening to connect with the kitchen for lively gatherings.





BATHED IN LIGHT. WRAPPED IN LUXURY.

Natural and integrated lighting intertwine in the ensuite, setting the tone for tranquil evenings and refreshing mornings. Marble textures seamlessly unify the space, connecting these features to the elegant finishes throughout the home.

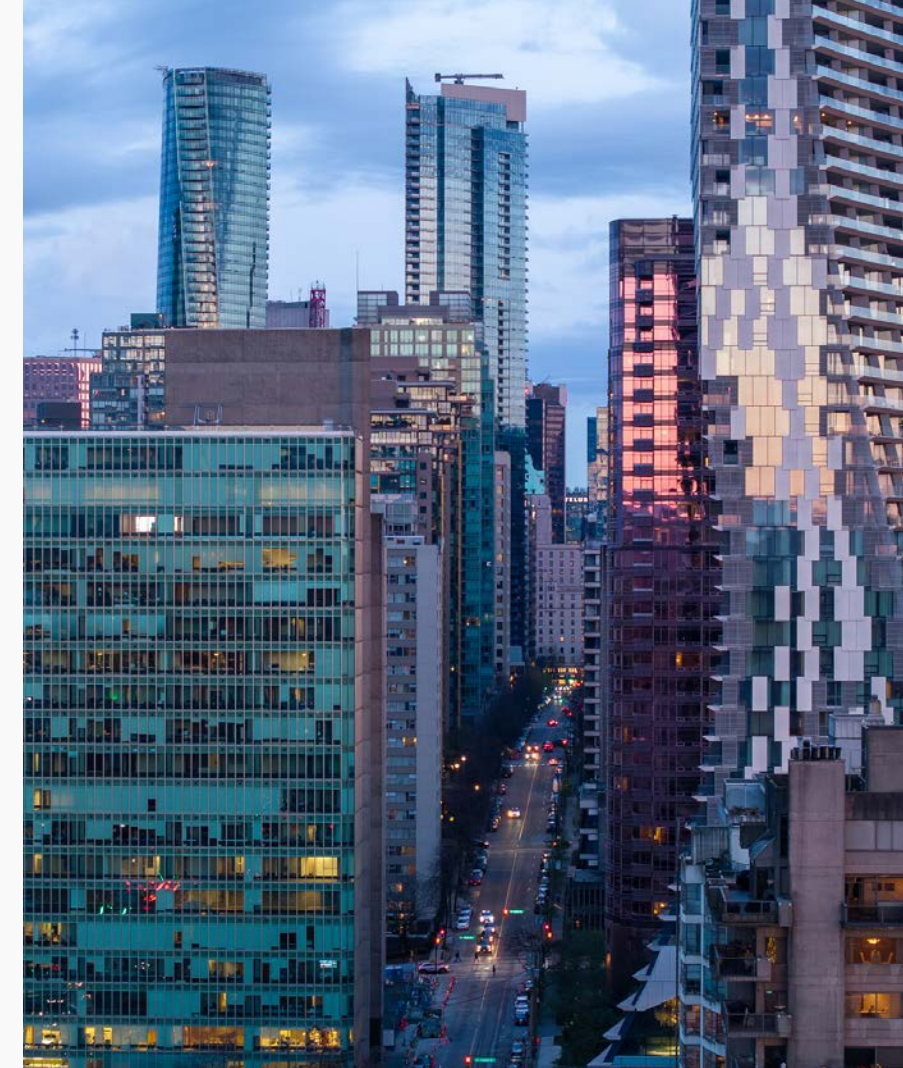


◀ WESTERN VIEW



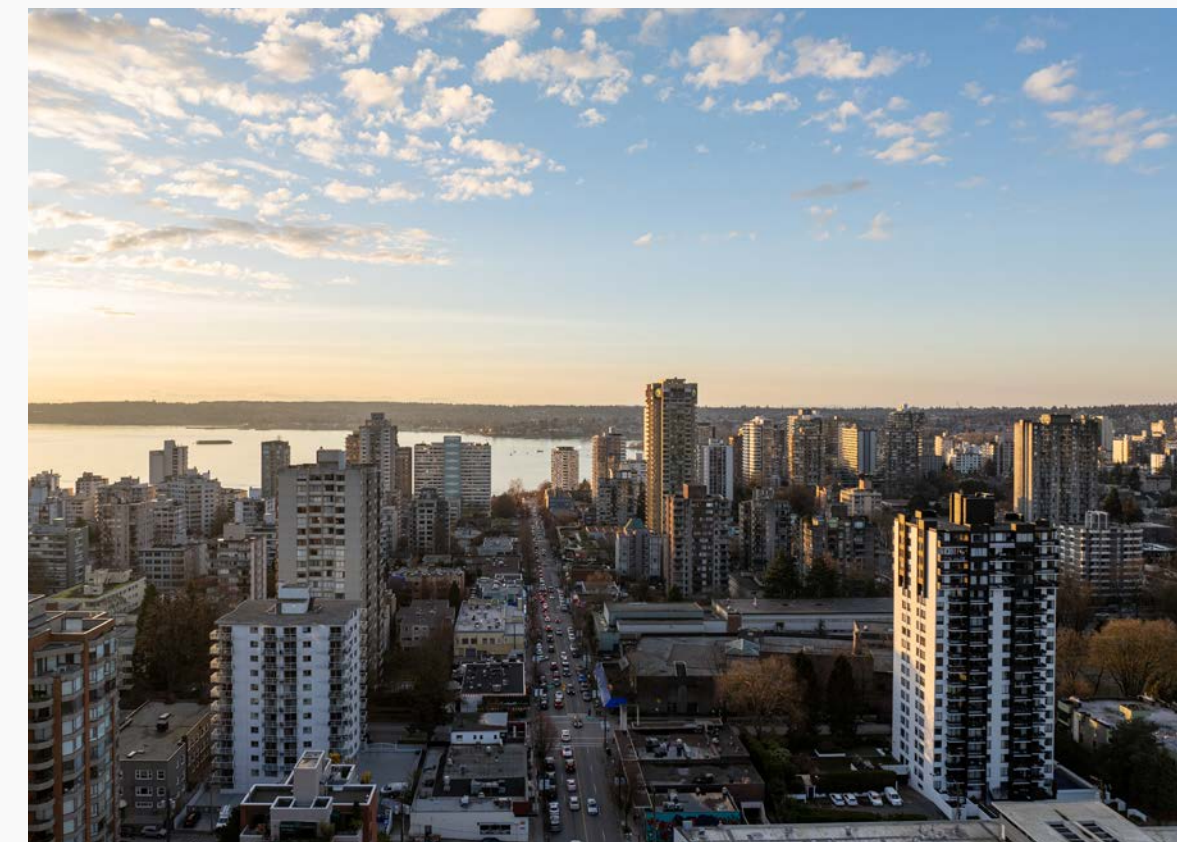
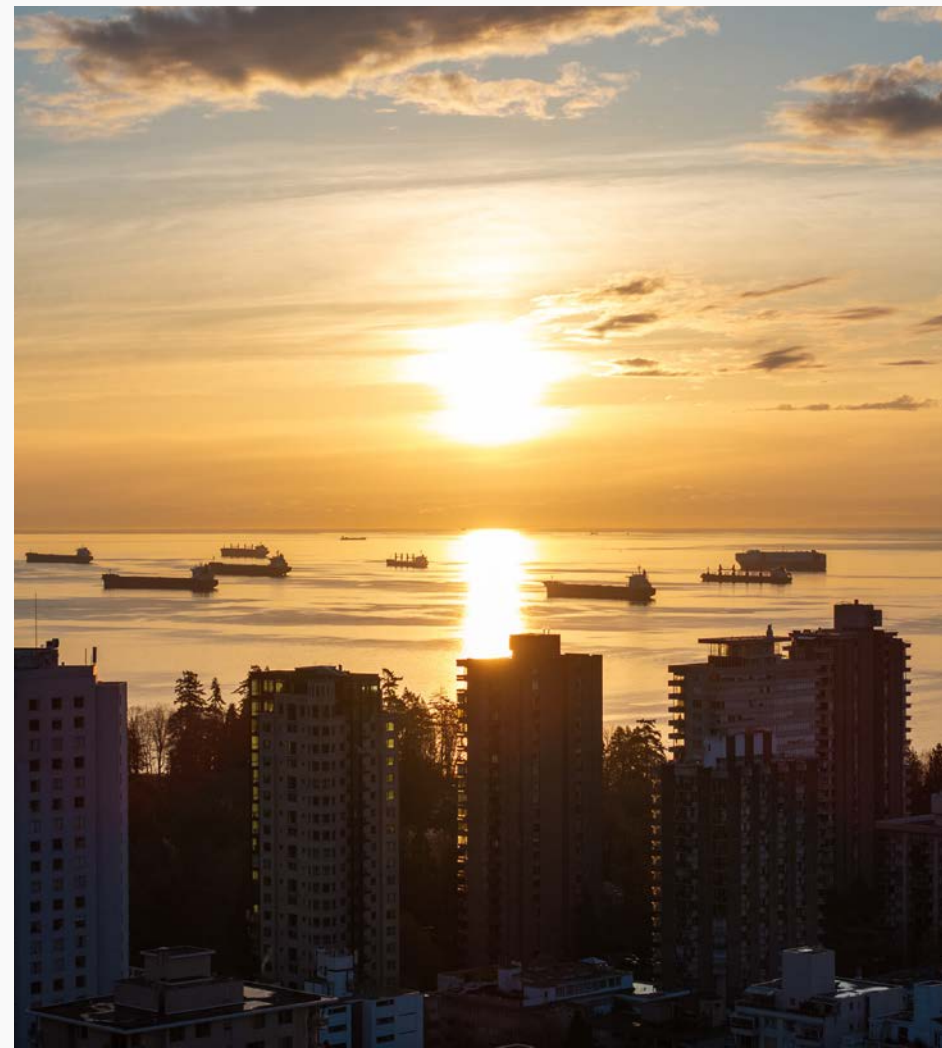
▶ NORTHWEST VIEW

▶ EASTERN VIEW



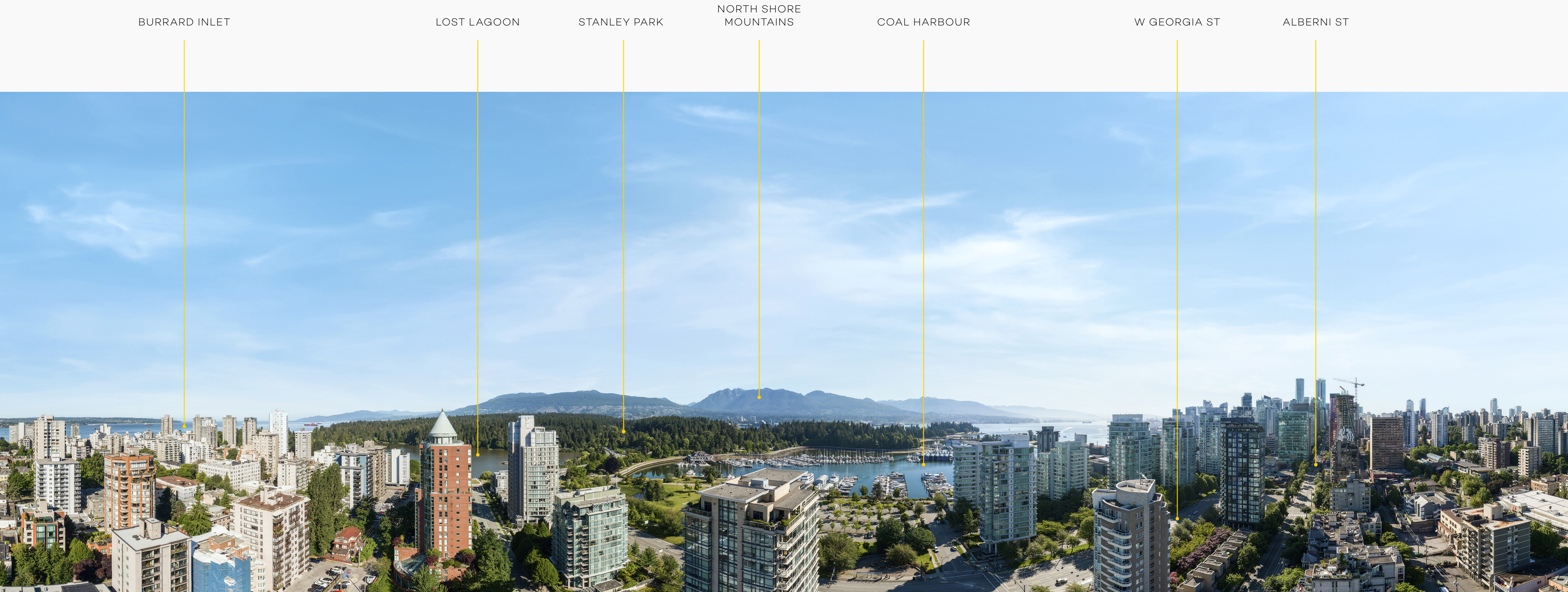
EXCLUSIVE VIEWS BEYOND THE CITY

▶ SOUTHWEST VIEW



▶ SOUTHERN VIEW

From the quiet shimmer of English Bay to the peaks and valleys of the North Shore mountains, the views from the penthouse levels soar across Vancouver, inviting you to take it all in and experience its beauty in its most expansive form.



A PENTHOUSE MASTERPIECE DESIGNED BY STE. MARIE

Meticulously designed by Ste. Marie exclusively for 1818 Alberni’s Penthouse Collection, each feature and finish is crafted to elevate every detail with an unparalleled blend of luxury, comfort, and masterful craftsmanship.

- KITCHEN
- Custom-designed Italian cabinetry by Ste. Marie
 - Marble flows across the countertops, backsplash, and an expansive island with waterfall edges
 - Premium Wolf & Sub-Zero appliances provide professional-grade performance and timeless reliability

- ENSUITE
- Bespoke Italian vanity by Ste. Marie for style and storage
 - Seamless marble-tiled walls and flooring
 - Full-marble freestanding tub in the primary ensuite
 - Graff polished nickel plumbing fixtures

- POWDER ROOM
- Striking marble feature wall and sink
 - Elegant full-height millwork panelling

- PENTHOUSE
ROOF DECK
- Exclusive to 2101 and 2102
 - Private rooftop terraces designed by Durante Kreuk
 - Integrated outdoor kitchen and private sundeck
 - Zen-inspired green roof and custom landscaping

THE PENTHOUSE COLOUR SCHEME



PARTNERS IN PRESTIGE. A SYMPHONY OF STYLE & INNOVATION.



Travel in Unmatched Elegance with
Exclusive Chauffeur Service

ROLLS-ROYCE
MOTOR CARS
VANCOUVER

THE PENTHOUSE COLLECTION



Sophisticated Living Powered by
Intuitive Smart Home Integration

B&O

Personalized Luxury Through
Canada's Premier Style Partner

HOLT RENFREW



REDEFINING THE SKYLINE ON ARCHITECT’S ROW

Landa’s journey on Alberni Street is just beginning. As the first of three projects set to transform this district, the bold and sculptural design of 1818 Alberni by renowned architect Foad Rafii is poised to become a landmark. Its striking stacked form and refined materiality create an architectural statement — one that seamlessly balances modern elegance with urban sophistication. Landa continues to craft masterpieces in collaboration with acclaimed architects and designers, reshaping the cityscape and enriching neighbourhoods.

Recognized as one of the architects who shaped the Vancouver of today, Foad Rafii has built an exceptional portfolio of landmark residential and mixed-use projects, showcasing refined contemporary architecture in urban settings across North America.



1650 ALBERNI ST



THE PENTHOUSE COLLECTION



1400 ALBERNI ST

“An address of prestige like 1818 Alberni deserves nothing but the best, and that is exactly what we have envisioned through a richly layered experience in elevated luxury living. It sets the stage for what’s to come as we continue shaping Alberni Street into Vancouver’s most distinguished residential corridor.”

KEVIN CHEUNG
Landa Global Properties Founder & CEO



1818ALBERNI.COM

604.262.1818

LANDA
GLOBAL PROPERTIES

rennie
MARKETING SYSTEMS

The developer reserves the right to make changes and modifications to the information contained herein without prior notice. Dimensions, sizes, areas, specifications layout and materials are approximate only and subject to change without notice.
Artist's renderings and maps are representations only and may not be accurate. Prices are subject to change without notice. See staff for details. E&O.E.