

# Maison Wellesley

Residences in the Core



Coming soon to 506 Church Street, in the heart of The Village, Maison Wellesley is an intimate boutique mid-rise condominium offering residents with 14-storeys for an incomparable urban lifestyle. Everything you desire is within your reach.

160  
SUITES

14  
STOREYS

8,000+  
SF OF AMENITIES

**Suite Types:** A mix of one, two and three bedroom suites

**Occupancy:** 2027


**Architect:** Diamond Schmitt Architects

**Interior Designers:** Union31

**Lawyers:** Bratty's LLP


**Sales Agency:** Graywood Sales Management Limited


 Concierge

 Automated Parcel System


 Dog Wash

 Co-working space

 Two storey-gym with Yoga and Meditation Lounge

 Outdoor Terrace

 Podcast Studio

 Party Room



## Live where your individuality is reflected

Living in The Village means encountering community around every corner. It's grabbing your favourite coffee from your local spot, it's picking up fresh veggies for tonight's dinner, it's the delightful patios on every sidewalk, and it's the neighbourhood pride that you feel in the air all around you.

## Built to last

Graywood Developments exists at the intersection of exceptional developments and smart investments. We are excited to bring Your Future Maison to 506 Church, in Downtown Toronto.

## Toronto is a thriving tech hub

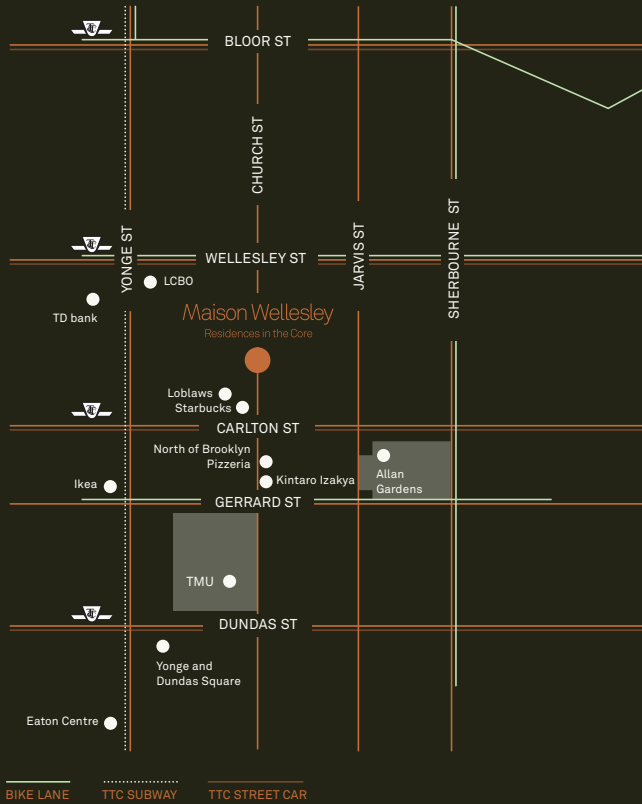
Major tech companies have either expanded or increased their presence in Downtown Toronto, with a tech boom happening all within a 3km radius of Maison Wellesley.



[Graywoodgroup.com](https://graywoodgroup.com)



# Experience what true Downtown living means.



**98** Walk Score  
**97** Bike Score  
**96** Transit Score

## Closest Transit Stations

- 1** minute walk to Toronto Bike Share
- 4** minute walk to Church Street streetcar
- 5** minute walk to Wellesley Station
- 7** minute walk to College Station



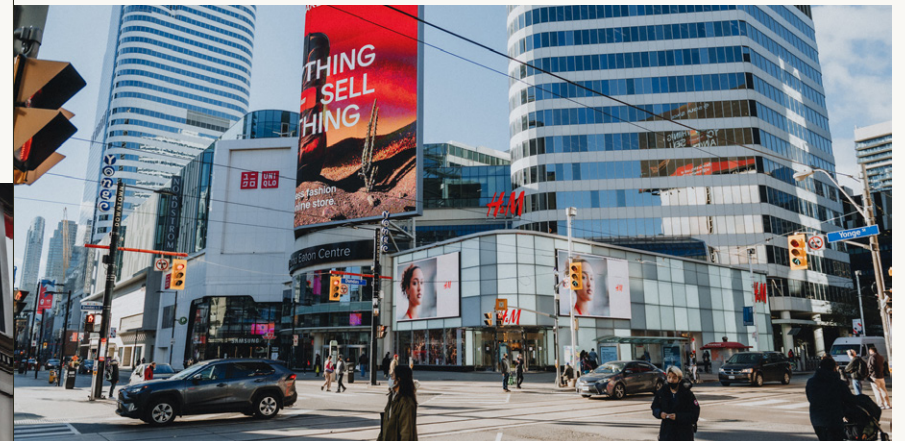
## Toronto's Universities

- 4** minute bike ride to University of Toronto
- 2** minute bike ride to Toronto Metropolitan University



## Toronto's Iconic Landmarks

- 11** minute bike ride to the financial district
- 7** minute bike ride to Queens Park
- 6** minute bike ride to Yonge-Dundas Square
- 12** minute walk to Yorkville
- 15** minute walk to Eaton Centre
- 15** minute bike ride to Ferry Dock



## Essentials

- 1** minute walk to Starbucks
- 5** minute walk to Loblaws & LCBO



# Maison Wellesley

Residences in the Core

Graywood Developments is a Toronto-based private investment management company specializing in real estate of exceptional quality. With over 40 years of experience, Graywood has a keen eye on how and where people want to live. Our most recent communities include The GOODE, JAC Condos, 250 Lawrence, Wonder Condos, Peter and Adelaide, Scout Condos, Centricity in Downtown Toronto and First and Park, The Theodore and Metroside in Calgary.

**We believe in the future of Downtown  
and that includes Your Maison.**

[MaisonWellesley.com](https://MaisonWellesley.com)  
[@graywoodsales](https://twitter.com/graywoodsales)  
[@graywooddevelopment](https://twitter.com/graywooddevelopment)



© 2023 Graywood Sales. All rights reserved. All facts, figures, prices and specifications are subject to change without notice. Actual views may not be exactly as shown. All distances are approximate. E. & O.E.