

## Plan A

1 Bed + 1 Bath

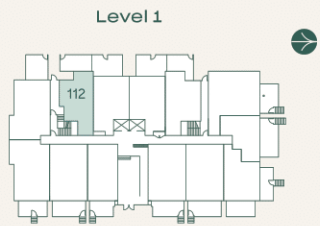
Interior: 484 SF • Exterior: 236 SF

Total: 720 SF

porte<sup>1</sup>  
homes

[porte.ca/Hartley](https://porte.ca/Hartley)

In order to maintain a high standard for our homes, the developer reserves the right to modify specifications, plans or materials without notice. Images and/or renderings (and possible upgrades) may not be an exact representation of the finished buildings. Interior and exterior sizes are approximate and are subject to change. Renderings are artist's concept only. This is not an offering for sale, any such offering can only be made with a Disclosure Statement. E.&O.E.

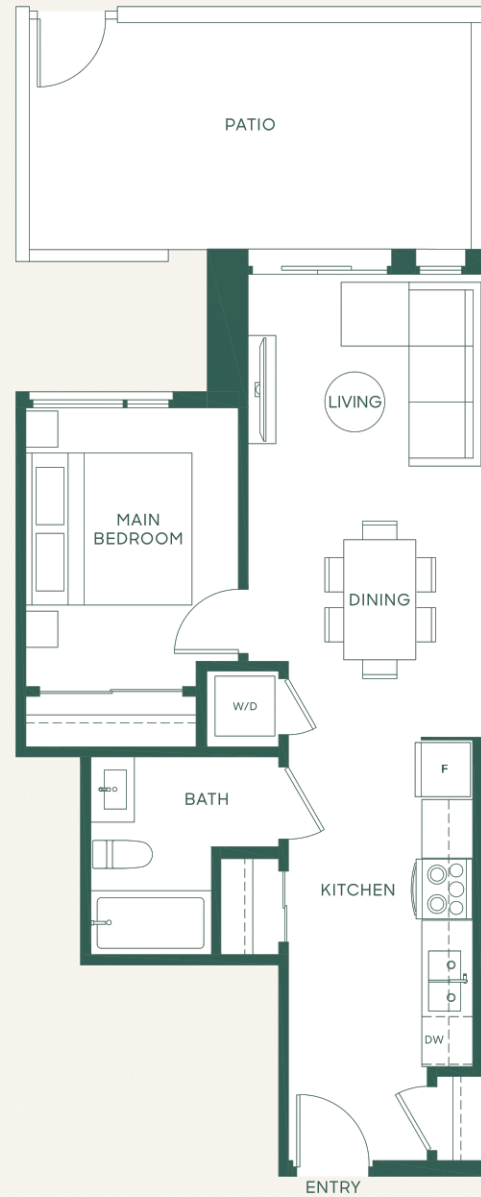


## Plan A1a

1 Bed + 1 Bath

Interior: 591 SF • Exterior: 178 SF

Total: 769 SF





## Plan A2

1 Bed + Den + 1 Bath

Interior: 608 SF • Exterior: 82 SF

Total: 690 SF





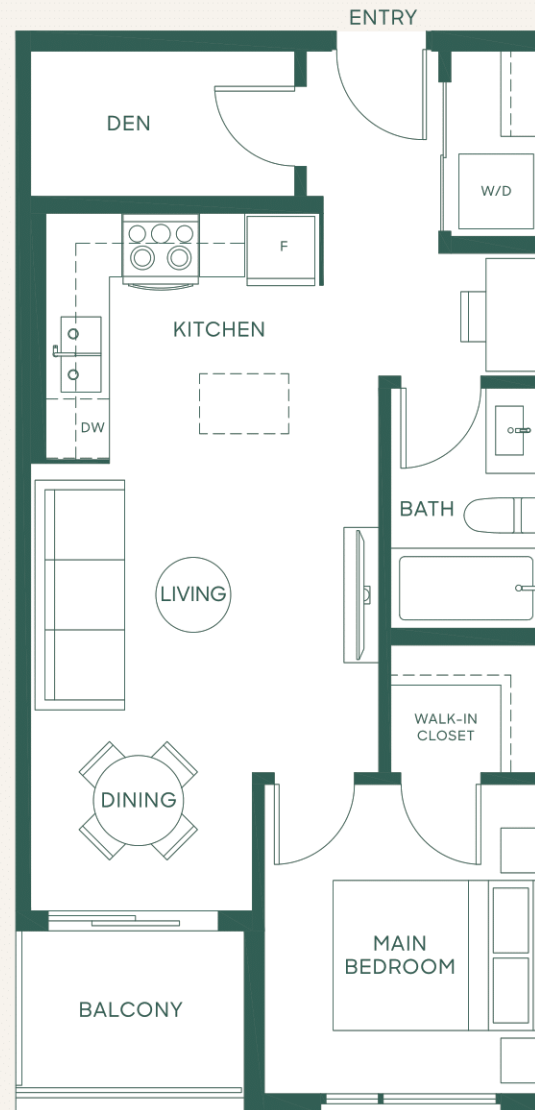
Homes 308, 408, 508  
are mirror plans.

## Plan A4

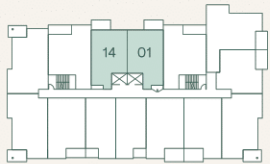
1 Bed + Den + 1 Bath

Interior: 594 SF • Exterior: 41-60 SF

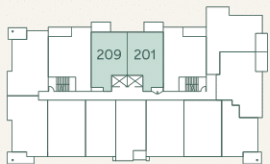
Total: 635-654 SF



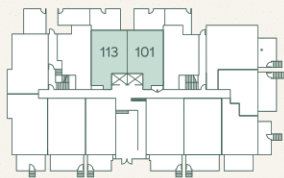
Level 3-5



Level 2



Level 1



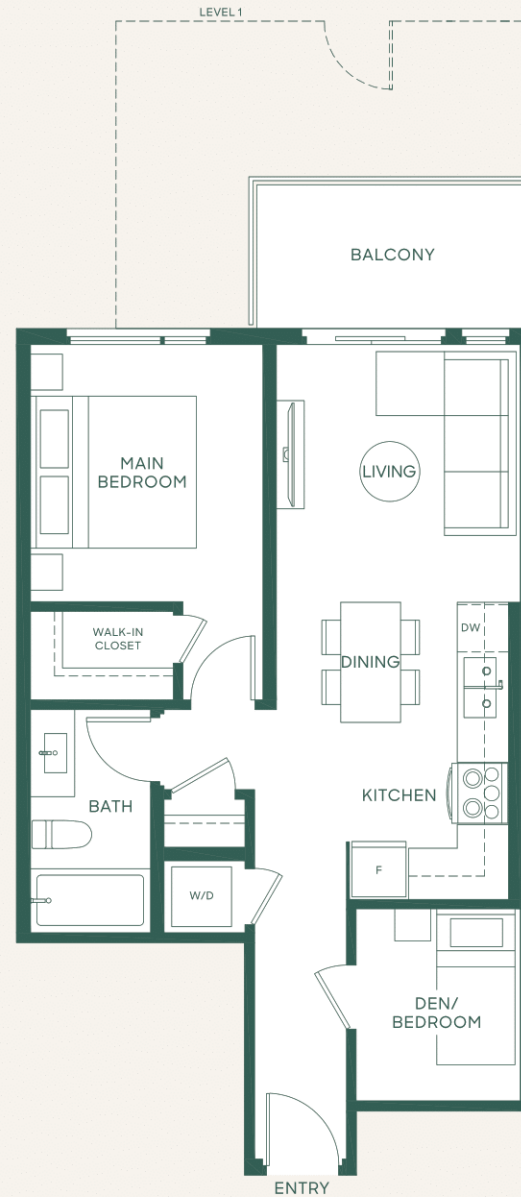
Homes 113, 209, 314, 414,  
514 are mirror plans.

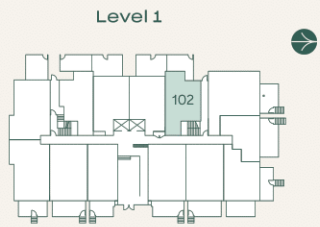
## Plan B1

Junior 2 Bed + 1 Bath

Interior: 639 SF • Exterior: 68-224 SF

Total: 707-863 SF



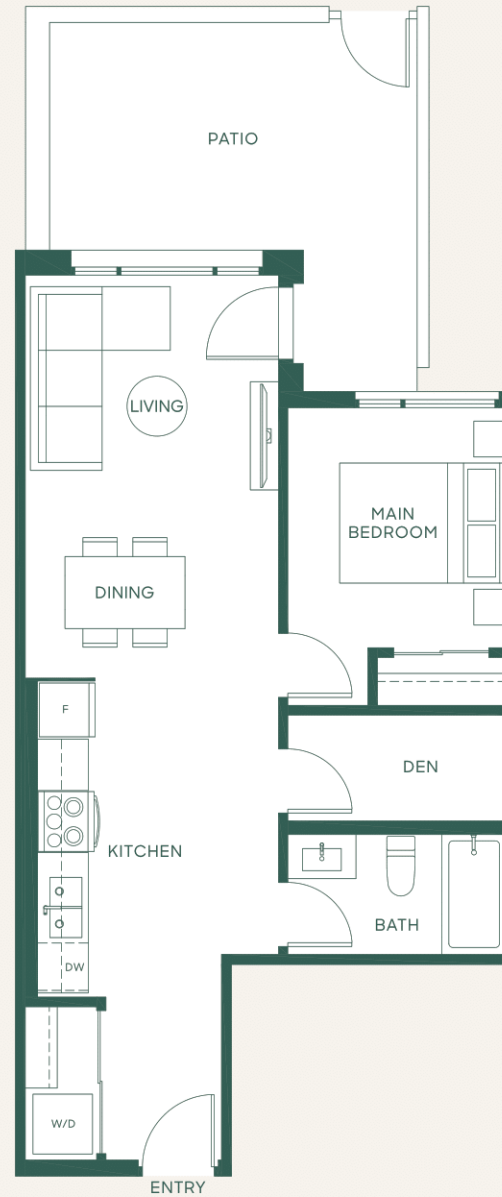


## Plan B5

1 Bed + Den + 1 Bath

Interior: 635 SF • Exterior: 173 SF

Total: 808 SF



In order to maintain a high standard for our homes, the developer reserves the right to modify specifications, plans or materials without notice. Images and/or renderings (and possible upgrades) may not be an exact representation of the finished buildings. Interior and exterior sizes are approximate and are subject to change. Renderings are artist's concept only. This is not an offering for sale, any such offering can only be made with a Disclosure Statement. E.&O.E.





## Plan C1

2 Bed + 1 Bath

Interior: 806 SF • Exterior: 174 SF

Total: 980 SF

porte<sup>1</sup>  
homes

[porte.ca/Hartley](https://porte.ca/Hartley)

In order to maintain a high standard for our homes, the developer reserves the right to modify specifications, plans or materials without notice. Images and/or renderings (and possible upgrades) may not be an exact representation of the finished buildings. Interior and exterior sizes are approximate and are subject to change. Renderings are artist's concept only. This is not an offering for sale, any such offering can only be made with a Disclosure Statement. E.&O.E.

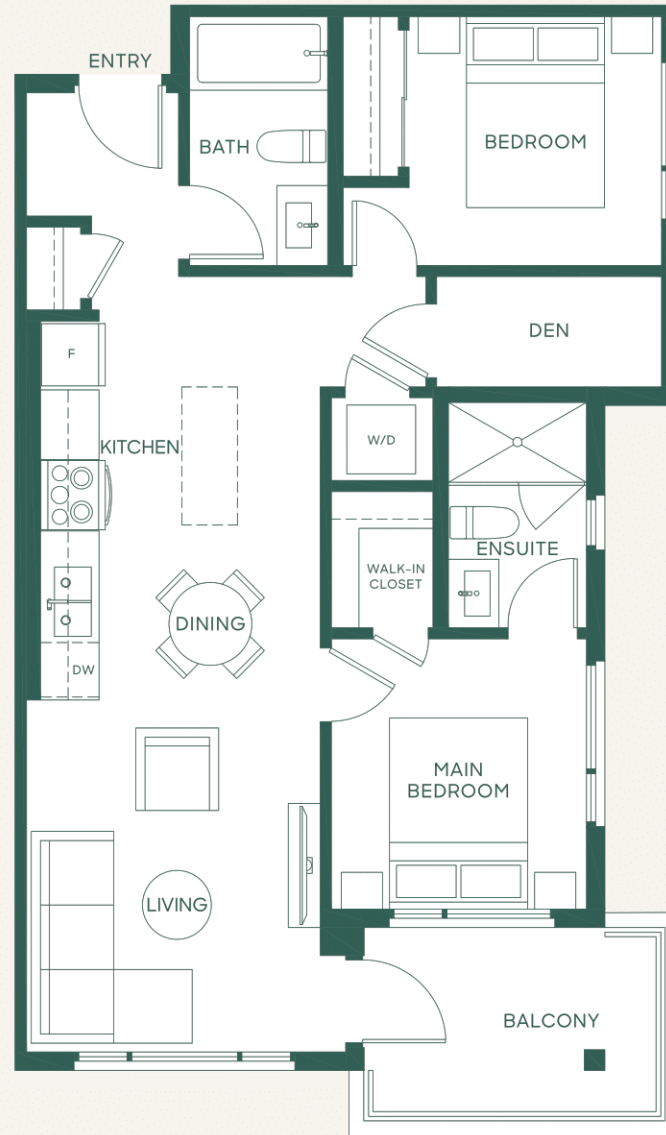


## Plan C4b

2 Bed + Den + 2 Bath

Interior: 798 SF • Exterior: 76 SF

Total: 874 SF





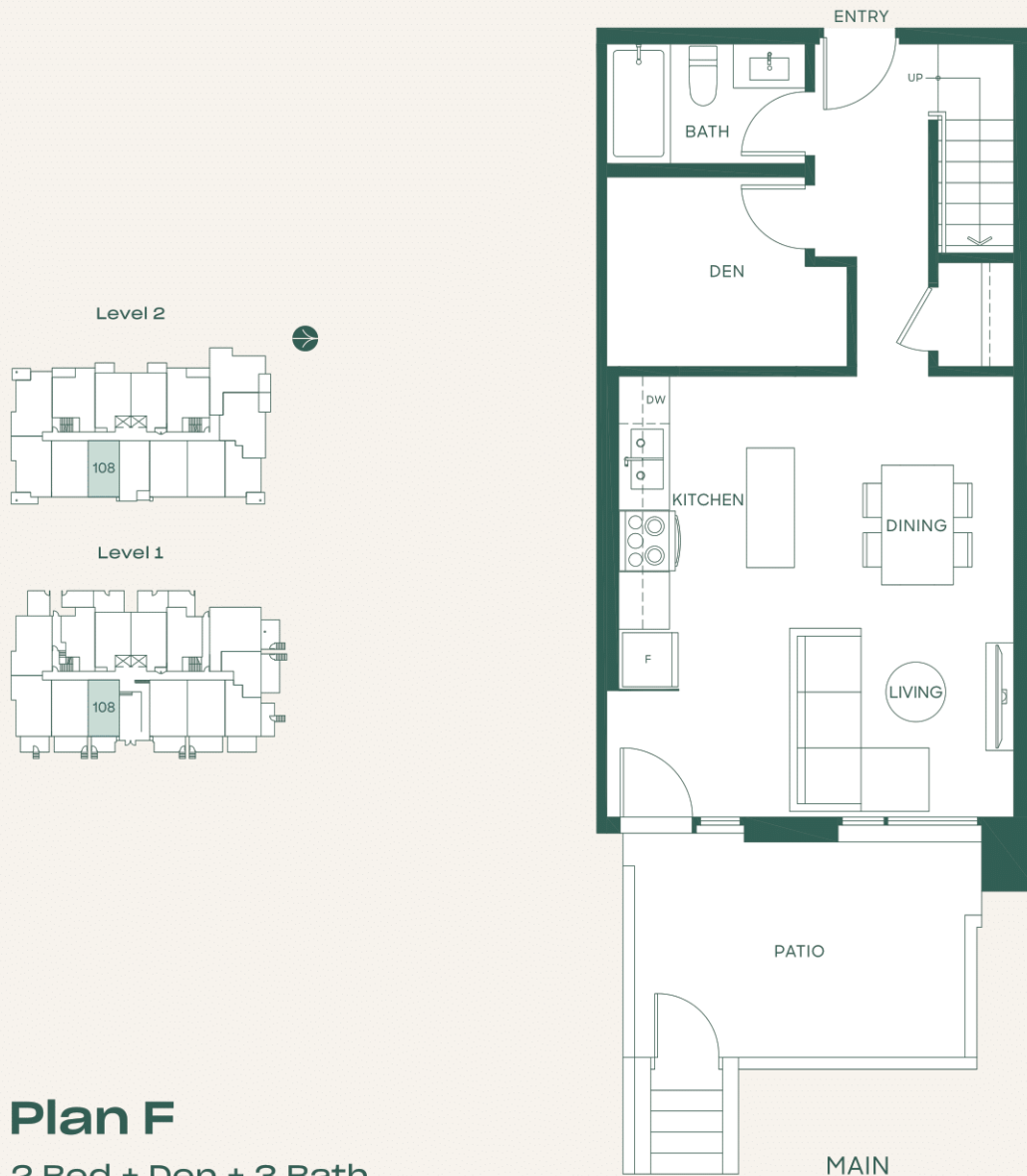


## Plan C6

2 Bed + 2 Bath

Interior: 837 SF • Exterior: 77 SF

Total: 914 SF



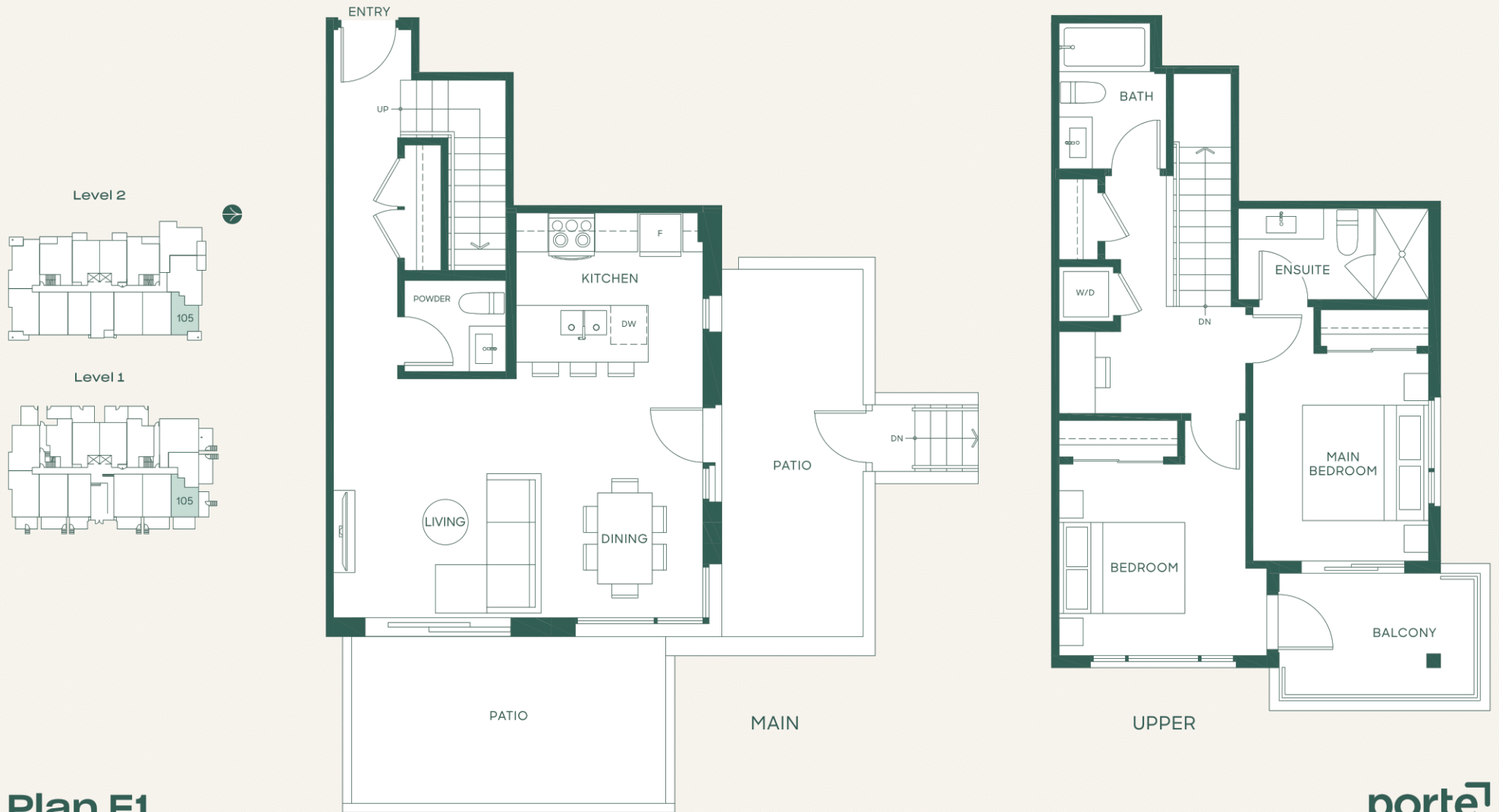
## Plan F

2 Bed + Den + 3 Bath

Interior: 1194 SF • Exterior: 127 SF

Total: 1321 SF

In order to maintain a high standard for our homes, the developer reserves the right to modify specifications, plans or materials without notice. Images and/or renderings (and possible upgrades) may not be an exact representation of the finished buildings. Interior and exterior sizes are approximate and are subject to change. Renderings are artist's concept only. This is not an offering for sale, any such offering can only be made with a Disclosure Statement. E.&O.E.



## Plan F1

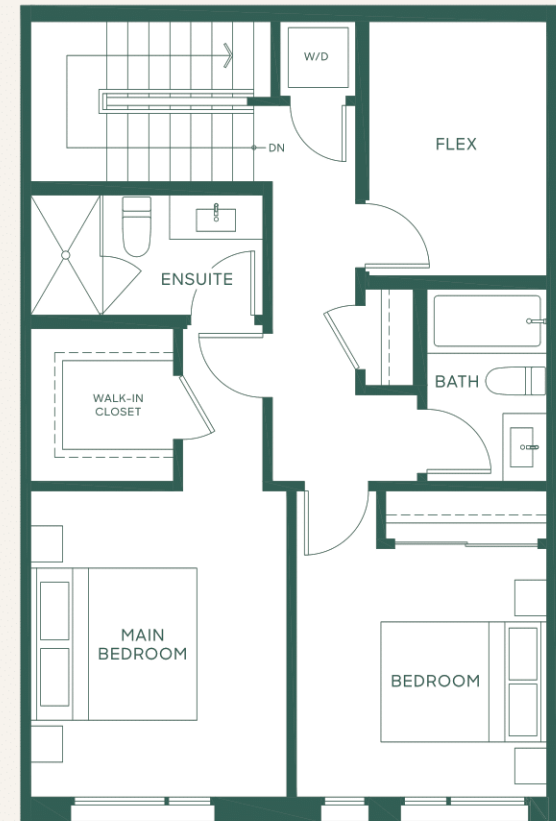
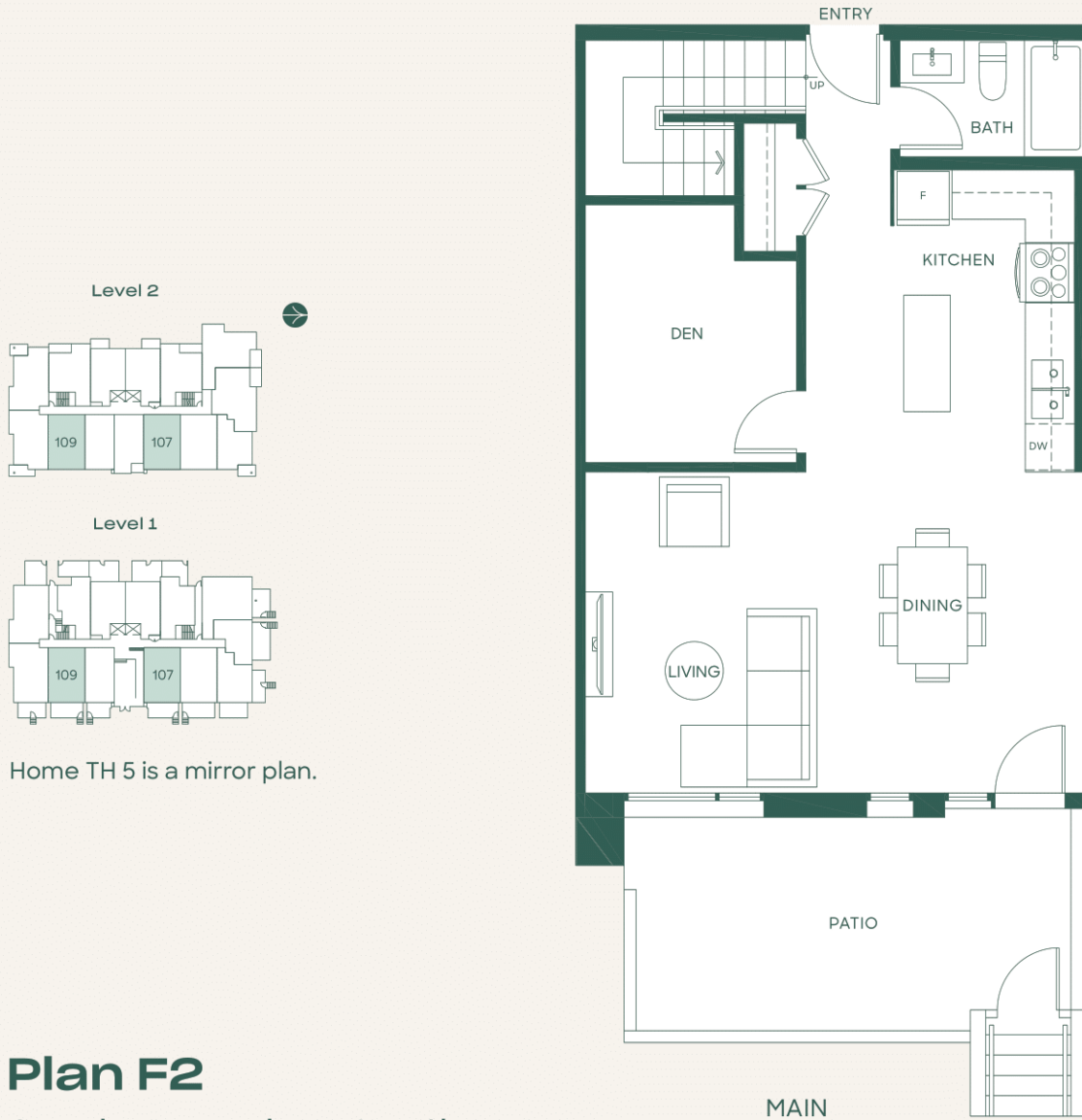
2 Bed + Nook + 2.5 Bath

Interior: 1186 SF • Exterior: 158 SF

Total: 1344 SF

In order to maintain a high standard for our homes, the developer reserves the right to modify specifications, plans or materials without notice. Images and/or renderings (and possible upgrades) may not be an exact representation of the finished buildings. Interior and exterior sizes are approximate and are subject to change. Renderings are artist's concept only. This is not an offering for sale, any such offering can only be made with a Disclosure Statement. E.&O.E.





## Plan F2

2 Bed + Den + Flex + 3 Bath

Interior: 1493 SF • Exterior: 167-175 SF

Total: 1660-1668 SF

In order to maintain a high standard for our homes, the developer reserves the right to modify specifications, plans or materials without notice. Images and/or renderings (and possible upgrades) may not be an exact representation of the finished buildings. Interior and exterior sizes are approximate and are subject to change. Renderings are artist's concept only. This is not an offering for sale, any such offering can only be made with a Disclosure Statement. E.&O.E.