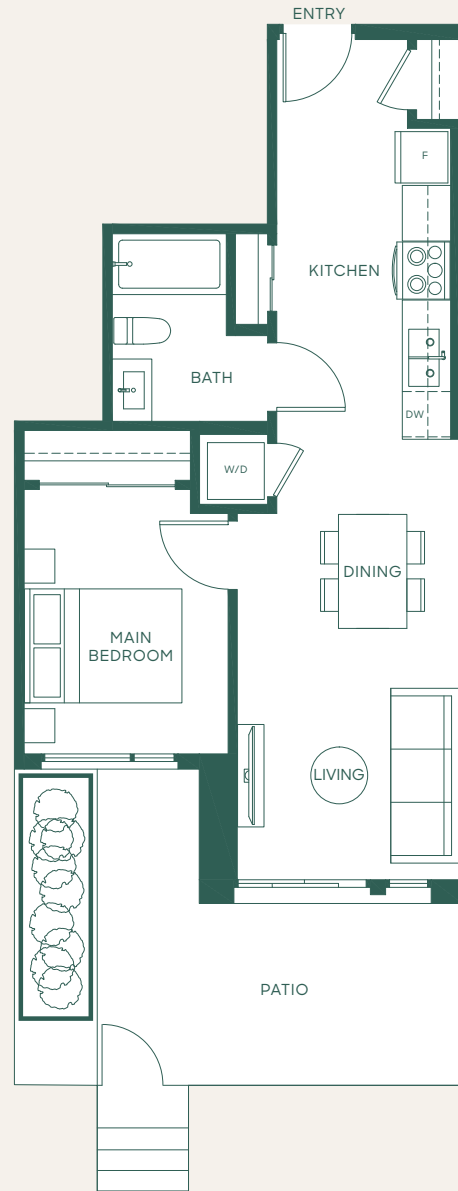


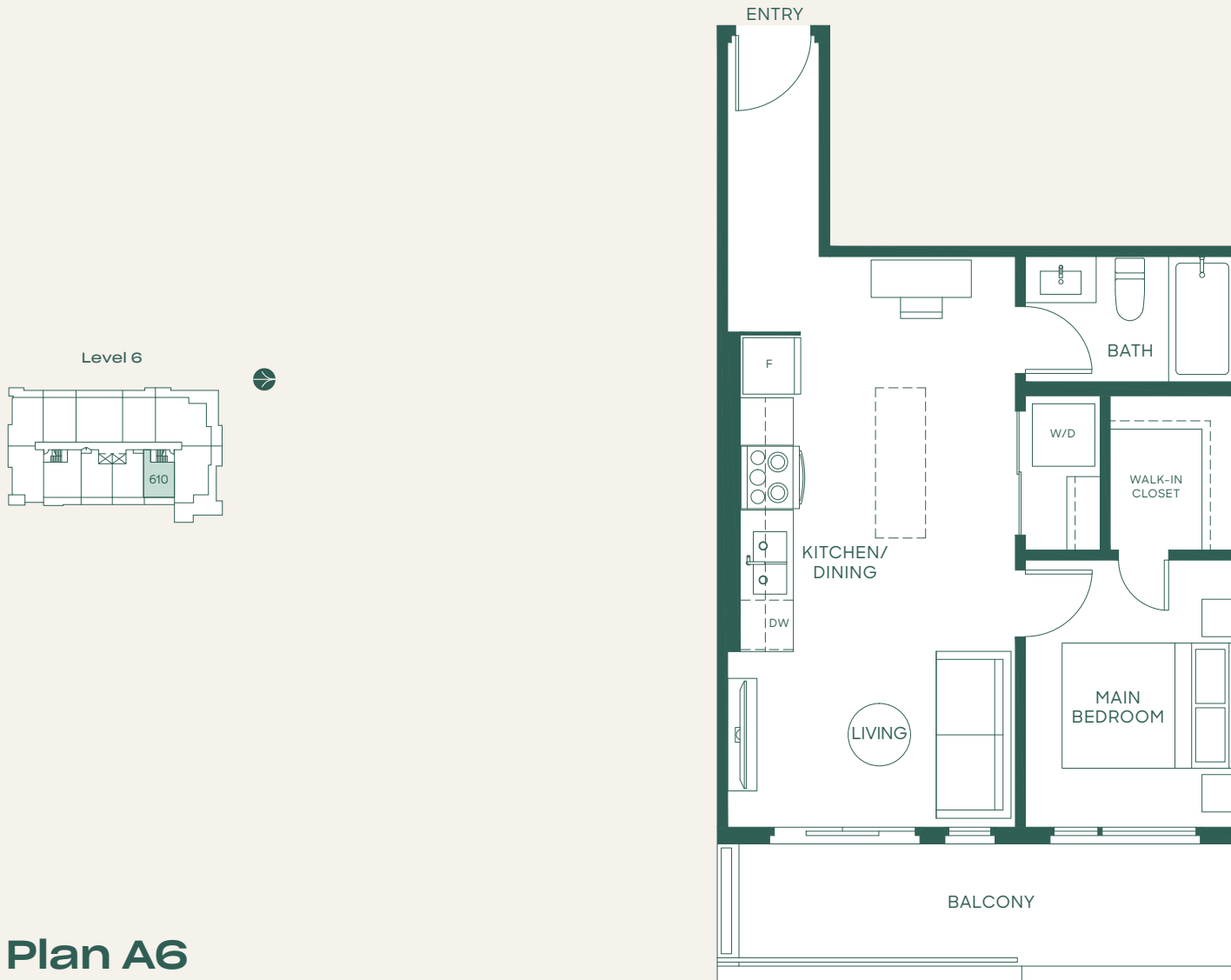
Plan A1

1 Bed + 1 Bath

Interior: 584 SF • Exterior: 161 SF

Total: 745 SF





Plan A6

1 Bed + 1 Bath

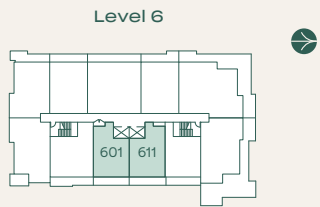
Interior: 544 SF • Exterior: 104 SF

Total: 648 SF

porte¹
homes

porte.ca/Hartley

In order to maintain a high standard for our homes, the developer reserves the right to modify specifications, plans or materials without notice. Images and/or renderings (and possible upgrades) may not be an exact representation of the finished buildings. Interior and exterior sizes are approximate and are subject to change. Renderings are artist's concept only. This is not an offering for sale, any such offering can only be made with a Disclosure Statement. E.&O.E.



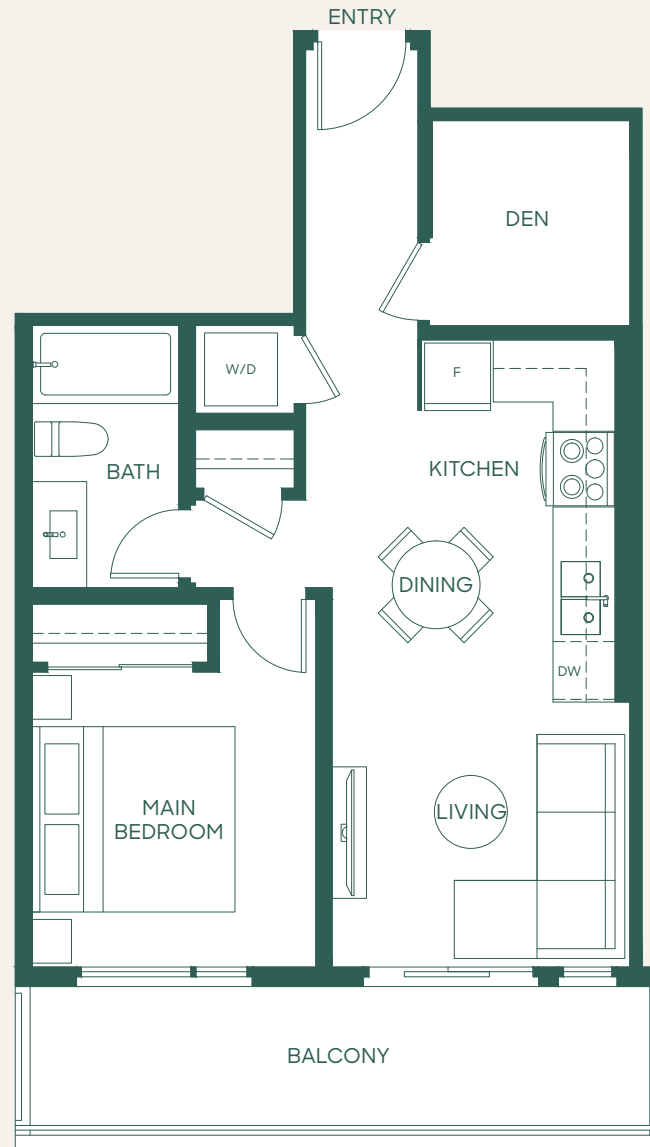
Home 601 is a mirror plan.

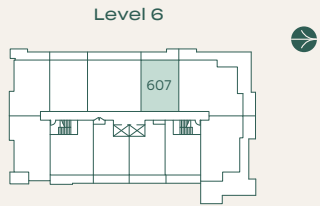
Plan B

1 Bed + Den + 1 Bath

Interior: 587 SF • Exterior: 104 SF

Total: 691 SF



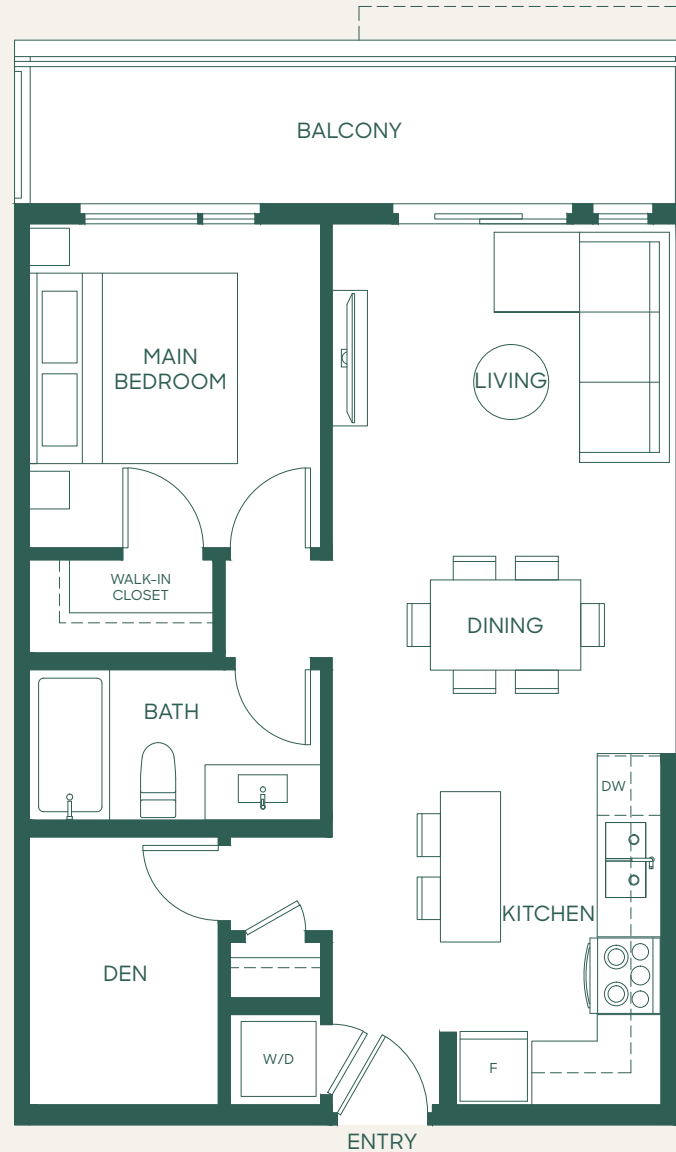


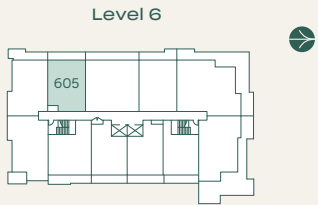
Plan B3

1 Bed + Den + 1 Bath

Interior: 684 SF • Exterior: 125 SF

Total: 809 SF



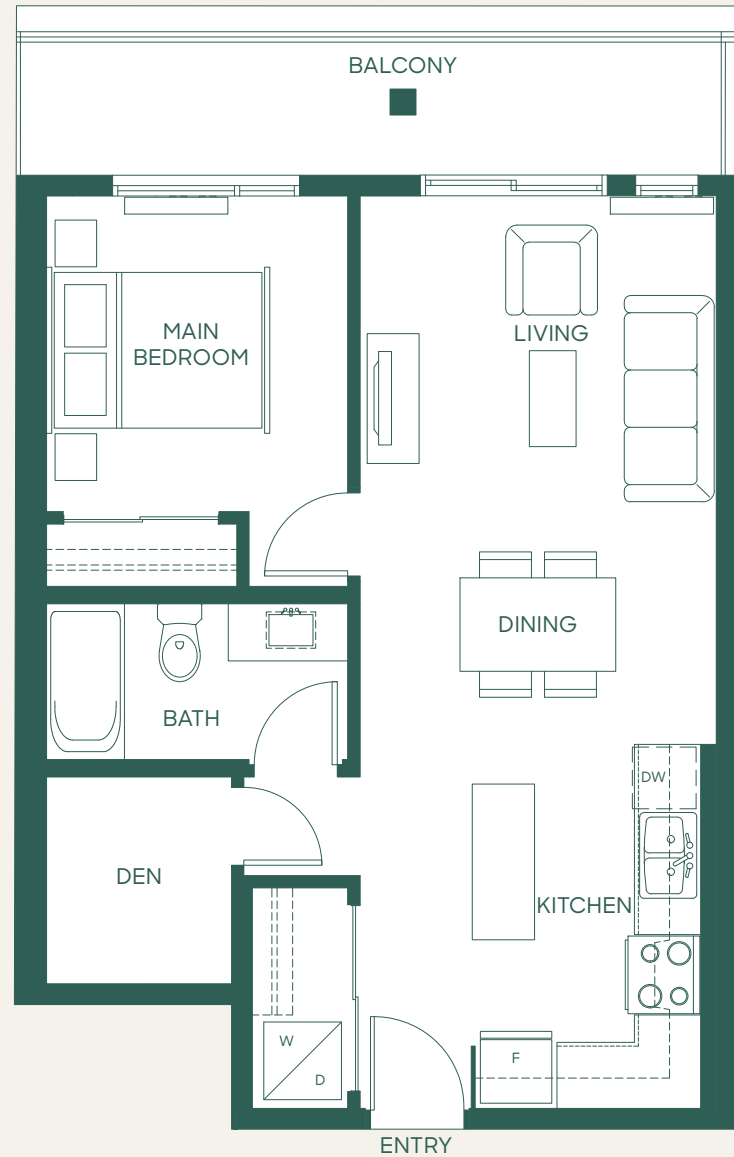


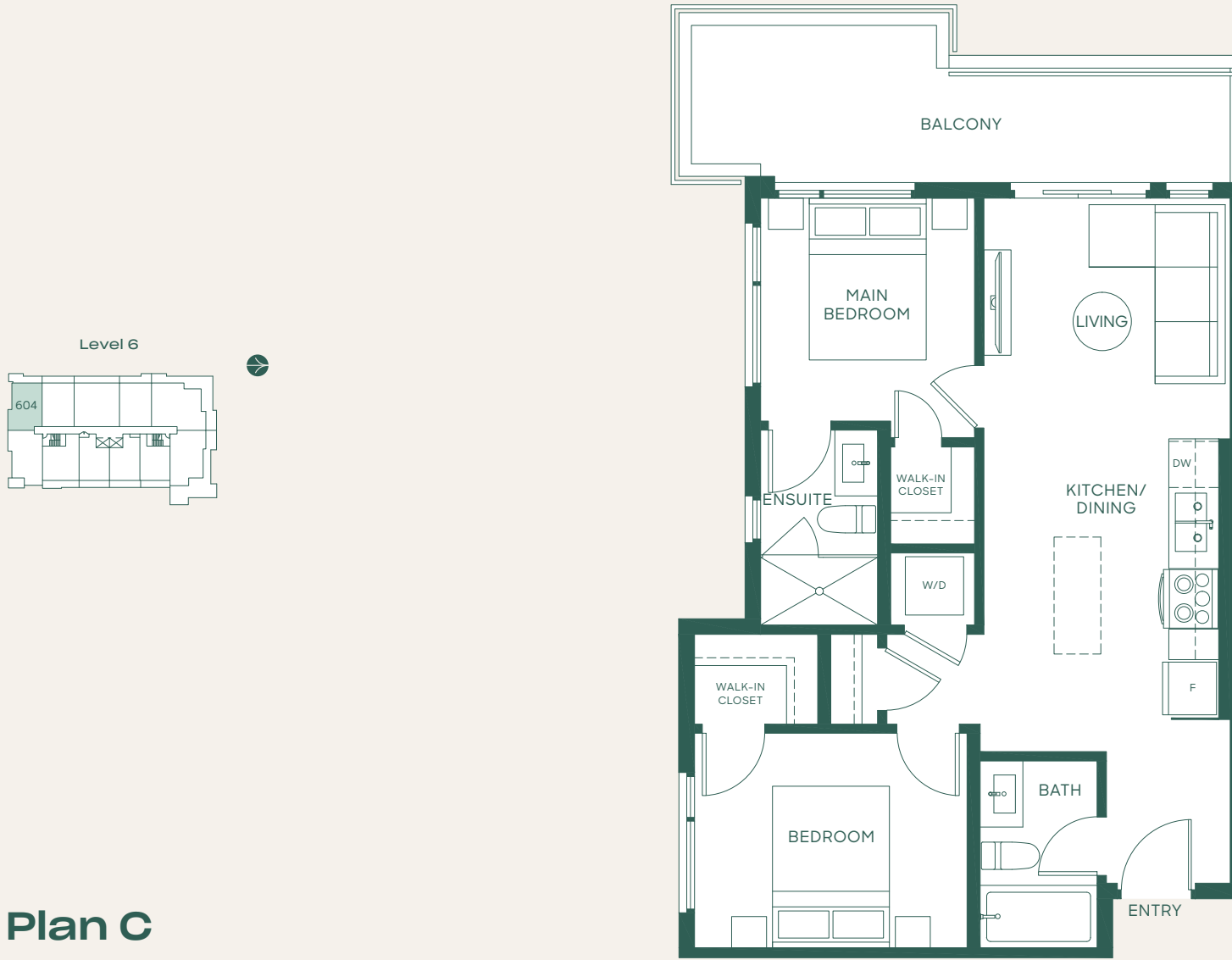
Plan B3a

1 Bed + Den + 1 Bath

Interior: 684 SF • Exterior: 110 SF

Total: 794 SF





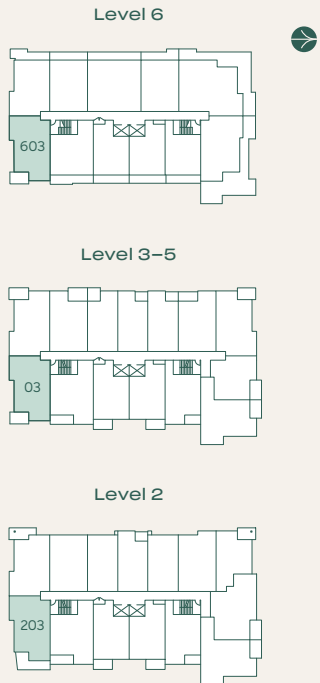
Plan C

2 Bed + 2 Bath

Interior: 728 SF • Exterior: 127 SF

Total: 855 SF

In order to maintain a high standard for our homes, the developer reserves the right to modify specifications, plans or materials without notice. Images and/or renderings (and possible upgrades) may not be an exact representation of the finished buildings. Interior and exterior sizes are approximate and are subject to change. Renderings are artist's concept only. This is not an offering for sale, any such offering can only be made with a Disclosure Statement. E.&O.E.

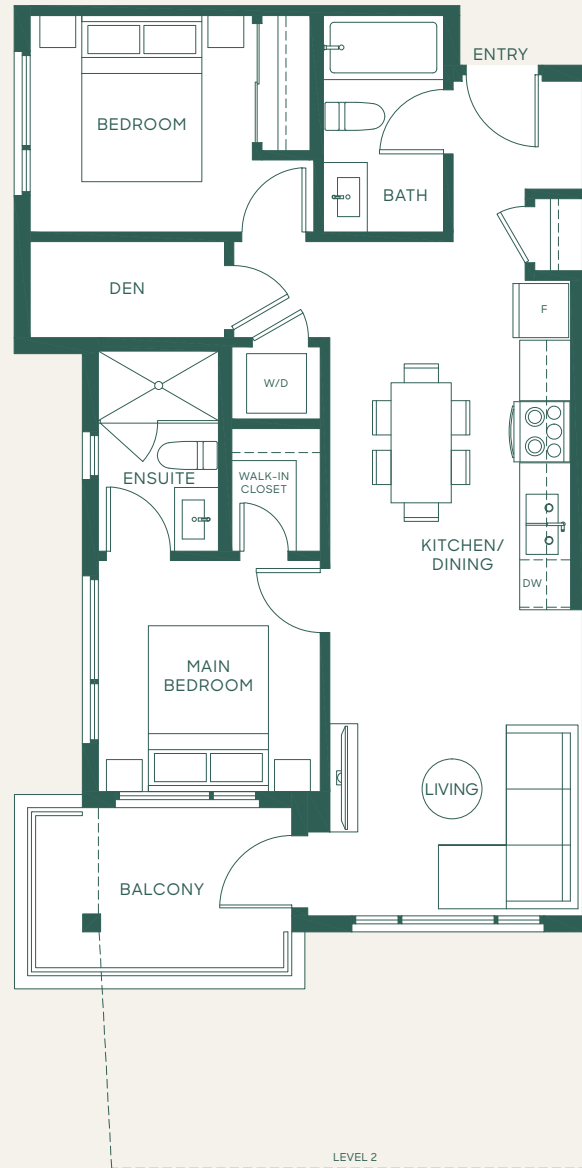


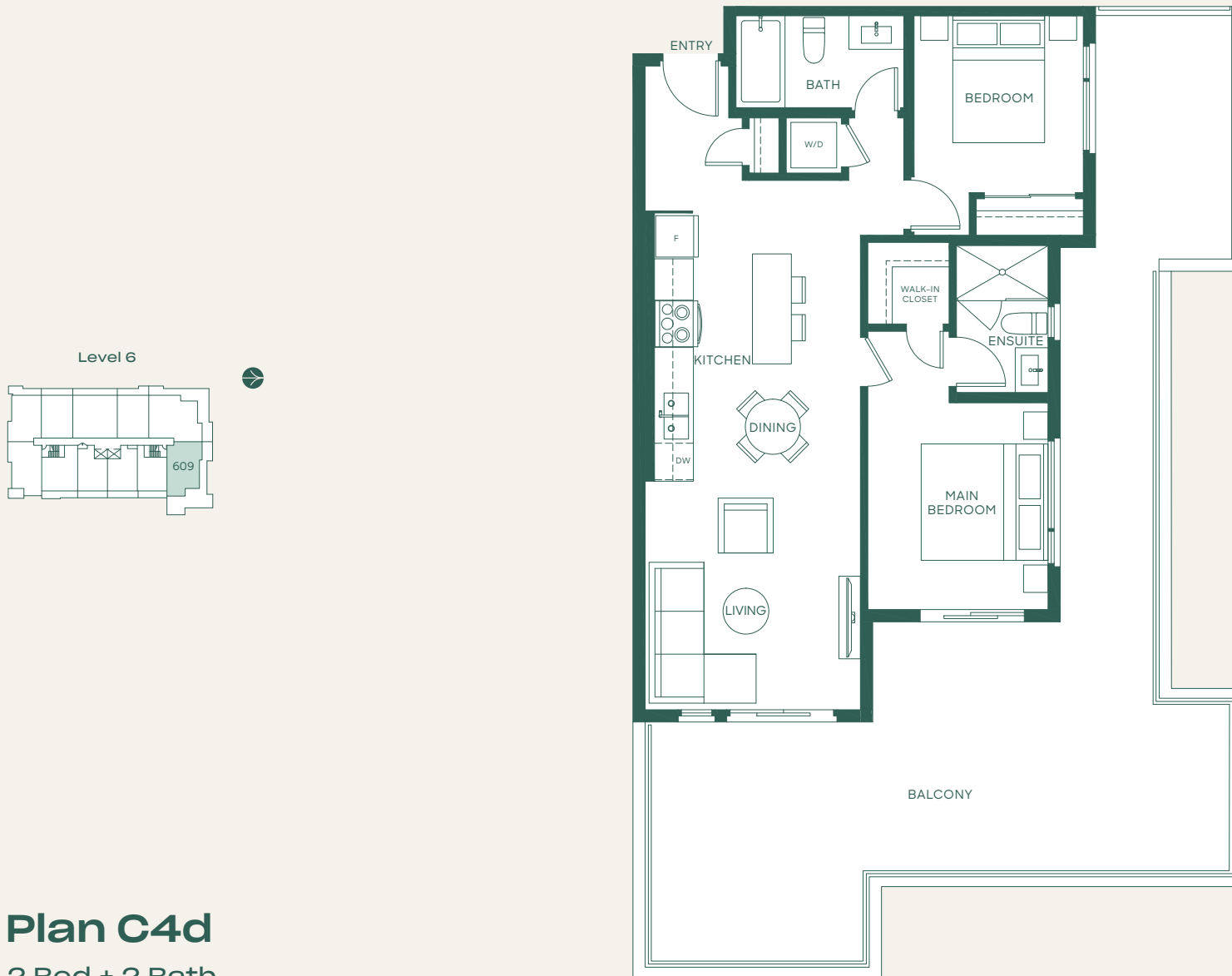
Plan C4

2 Bed + Den + 2 Bath

Interior: 802 SF • Exterior: 72-142 SF

Total: 874-944 SF





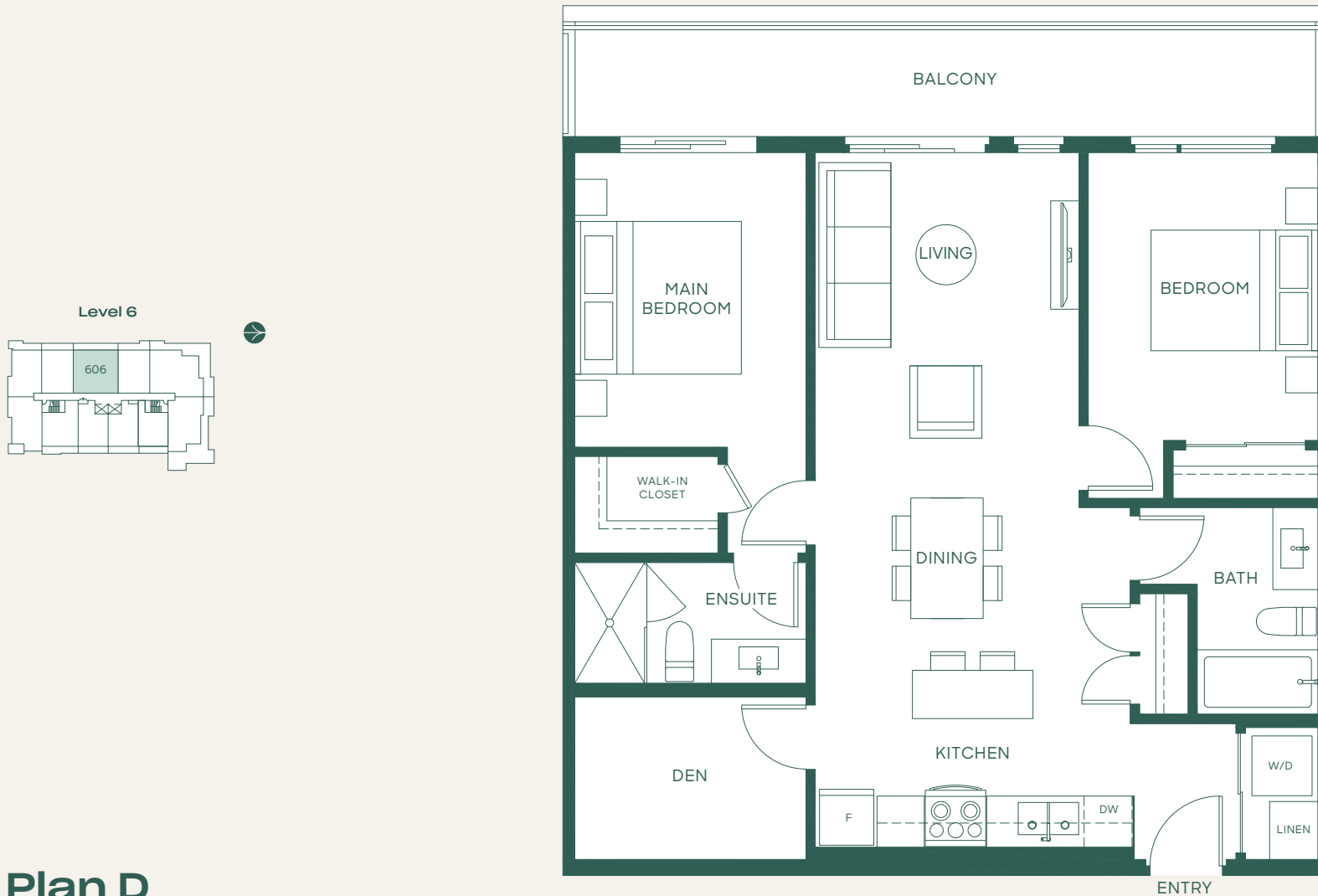
Plan C4d

2 Bed + 2 Bath

Interior: 850 SF • Exterior: 501 SF

Total: 1351 SF

In order to maintain a high standard for our homes, the developer reserves the right to modify specifications, plans or materials without notice. Images and/or renderings (and possible upgrades) may not be an exact representation of the finished buildings. Interior and exterior sizes are approximate and are subject to change. Renderings are artist's concept only. This is not an offering for sale, any such offering can only be made with a Disclosure Statement. E.&O.E.



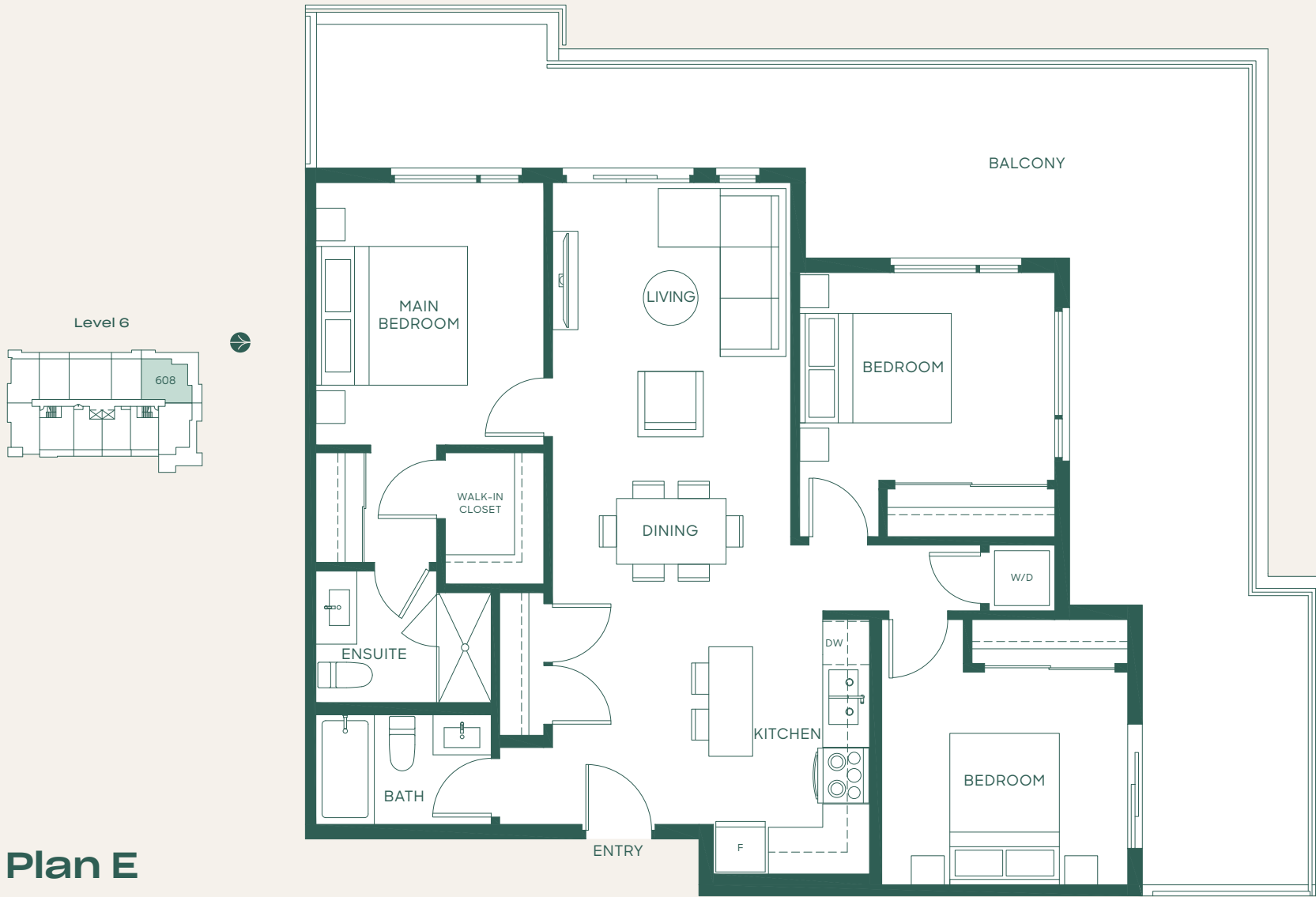
Plan D

2 Bed + Den + 2 Bath

Interior: 959 SF • Exterior: 142 SF

Total: 1101 SF

In order to maintain a high standard for our homes, the developer reserves the right to modify specifications, plans or materials without notice. Images and/or renderings (and possible upgrades) may not be an exact representation of the finished buildings. Interior and exterior sizes are approximate and are subject to change. Renderings are artist's concept only. This is not an offering for sale, any such offering can only be made with a Disclosure Statement. E.&O.E.



Plan E

3 Bed + 2 Bath

Interior: 1108 SF • Exterior: 539 SF

Total: 1647 SF

porte¹
homes

porte.ca/Hartley

In order to maintain a high standard for our homes, the developer reserves the right to modify specifications, plans or materials without notice. Images and/or renderings (and possible upgrades) may not be an exact representation of the finished buildings. Interior and exterior sizes are approximate and are subject to change. Renderings are artist's concept only. This is not an offering for sale, any such offering can only be made with a Disclosure Statement. E.&O.E.