

EXPERIENCE ELEVATED URBAN LIVING

# Harlin

STUDIO, 1, 2, & 3 BEDROOM HOMES

A woman with voluminous, curly brown hair is walking on a city street. She is wearing a white, double-breasted blazer over a black ribbed top and black trousers. She is holding a black handbag in her left hand. The background shows a modern building with many windows and a large green tree. The text is overlaid in the center of the image.

MEET HARLIN.  
RIVER DISTRICT'S NEW  
ADDITION WITH A  
DYNAMIC PERSONALITY  
ALL ITS OWN.

# RISE ABOVE THE REST.



Thirty storeys light up the sky, bringing downtown energy to a colourful, waterfront community. Introducing Harlin by Wesgroup. River District's newest addition with a dynamic personality all its own. Designed for those who appreciate the finer things in life, Harlin offers views, a lively urban vibe, and all the stylish touches and amenities you'd expect from a modern selection of cosmopolitan homes.





# WHERE SLEEK MEETS SKYLINE.

Harlin is more than just elevating expectations. It's redefining what contemporary urban living is all about. Towering 30 storeys high, these stylish homes offer views, while being intrinsically connected to the vibrant energy of River District's Town Centre. Drawing on the fluid features of the river, rippled steel and concrete forge an undeniable impression, while gently curving edges reflect a feeling of softness to balance the majestic height.

But it's not just the stunning architectural design that makes Harlin unique. Taking inspiration from the natural river eddy, the plaza spaces around the tower offer opportunities to pause and to gather, just like the flow of water in the river.



# LUXURY. ABOVE ALL.



It begins with an extravagant amenity package like no other. Three floors, including two levels at the top of the tower, invite you to experience all the lavish extras that make Harlin so exciting.



Show off the views from the upscale designer lounge.  
Entertain in the gourmet kitchen and bar area.



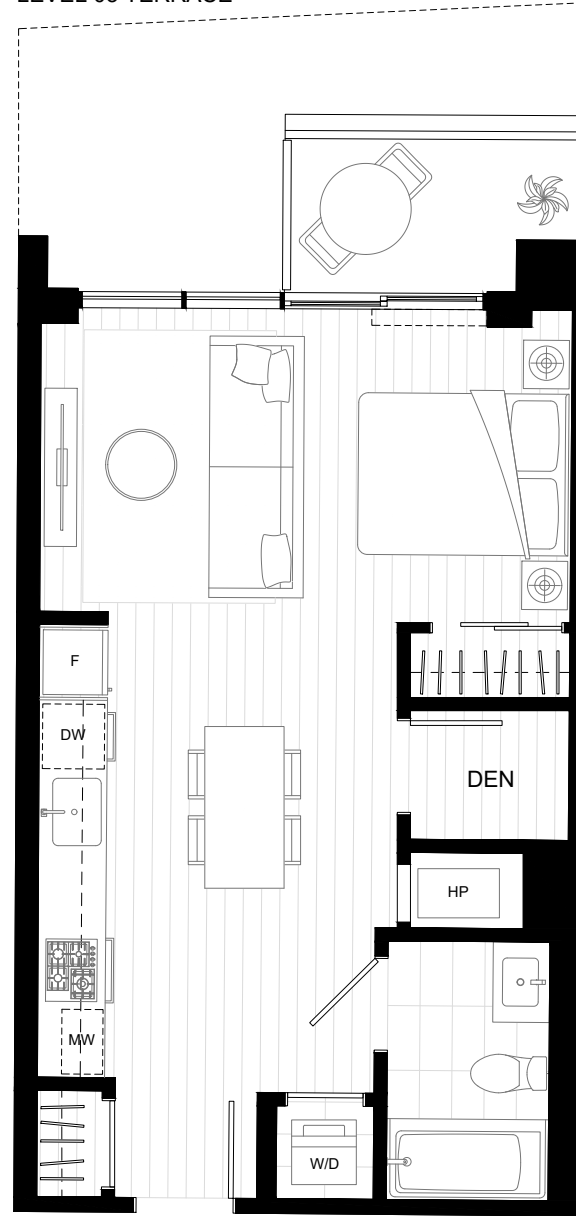
Take in the lookout bar with its endless views of the water, mountains, and city lights below. Or simply raise a glass and celebrate with good friends on the expansive patio lounge. Rise to the top and you'll begin to see what makes Harlin shine brighter than all the rest.



STUDIO, 1 BATH + DEN  
INTERIOR: 485 SQ FT  
EXTERIOR: 39-147 SQ FT



LEVEL 03 TERRACE



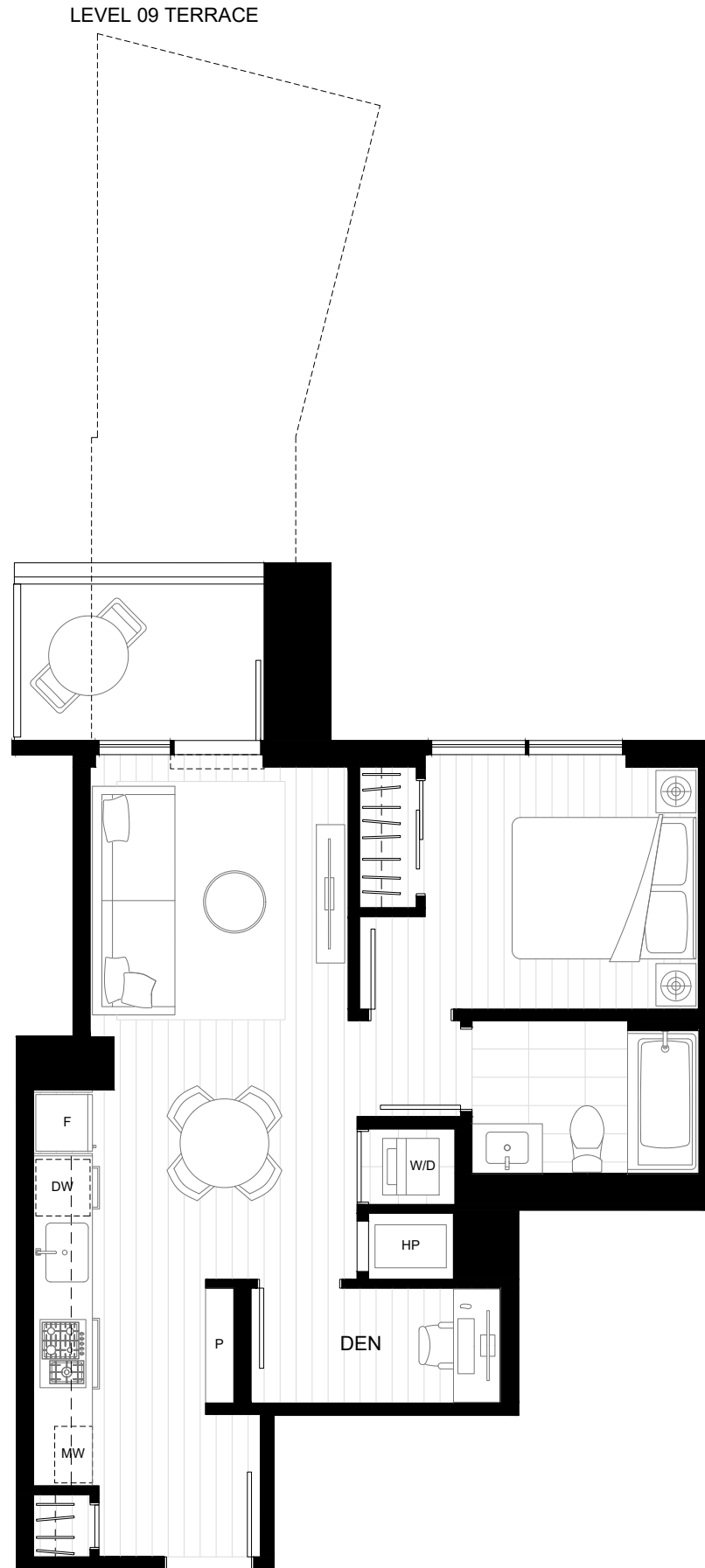


# B4

1 BED, 1 BATH + DEN  
INTERIOR: 547 SQ FT  
EXTERIOR: 47-181 SQ FT

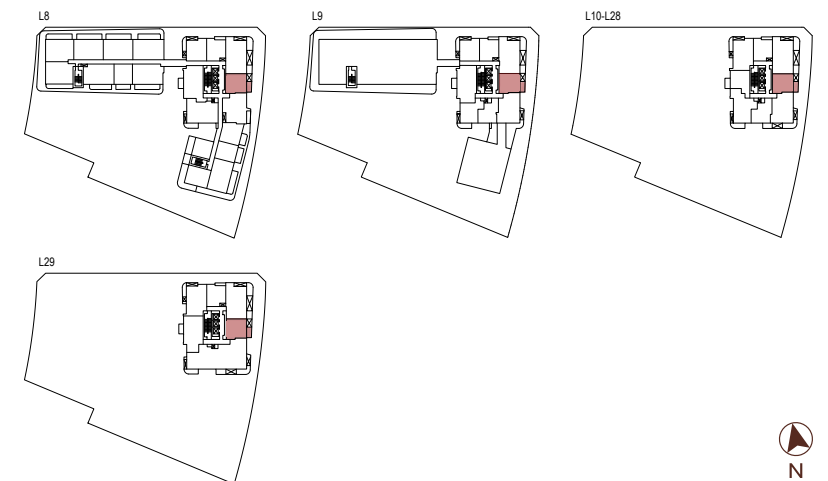
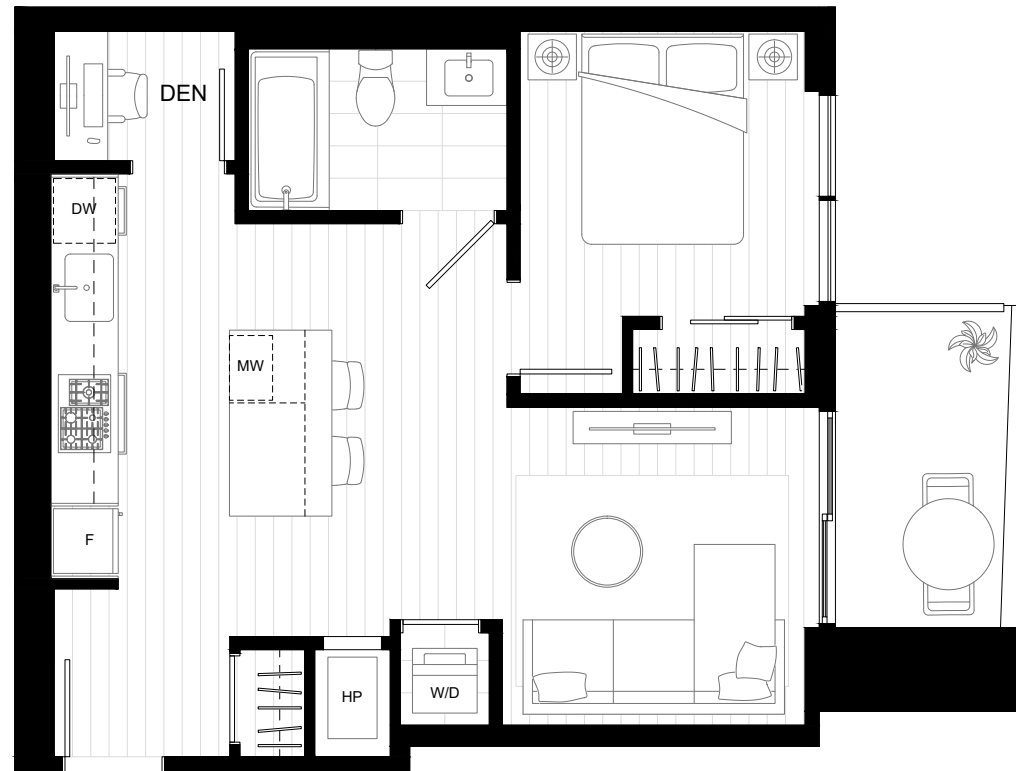


LEVEL 09 TERRACE



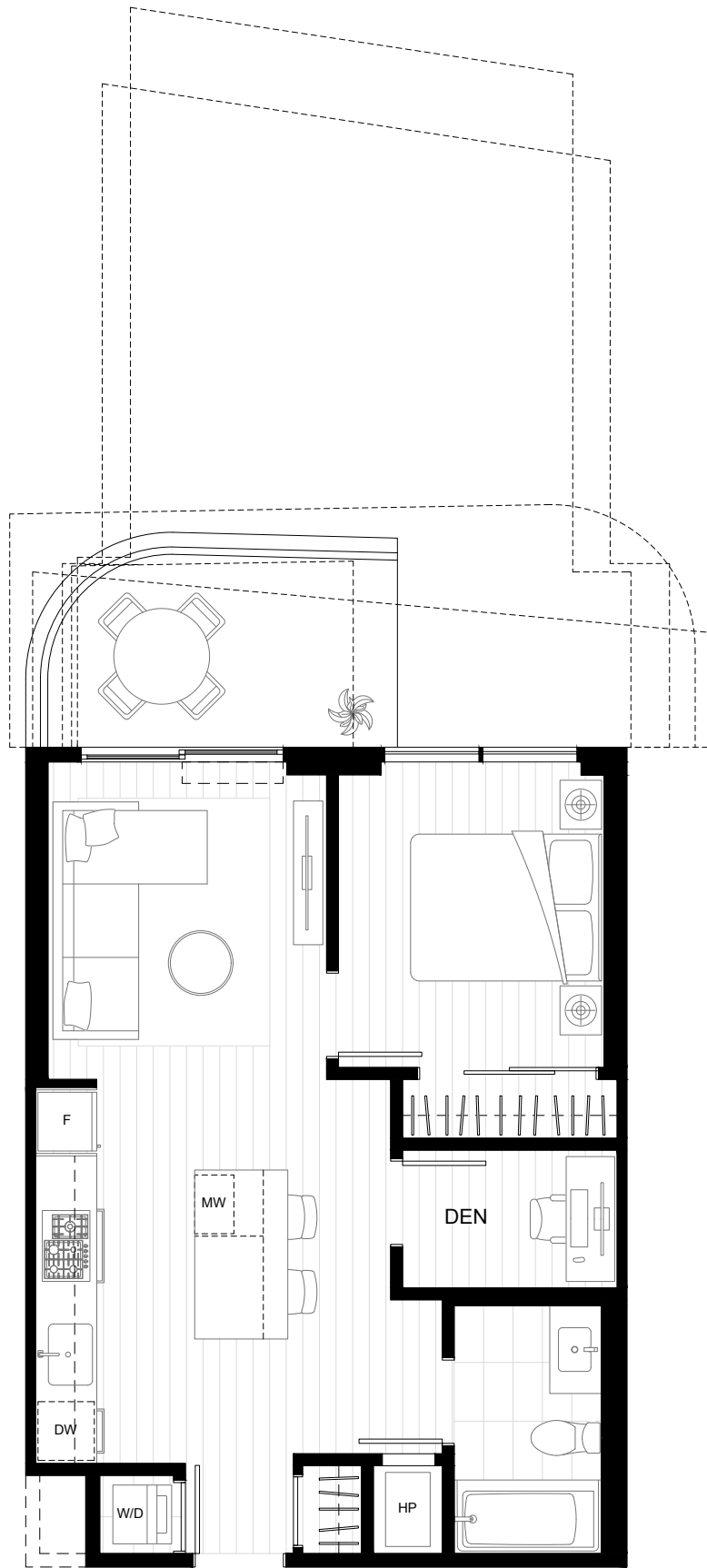
# B6

1 BED, 1 BATH + DEN  
INTERIOR: 559-564 SQ FT  
EXTERIOR: 50 SQ FT



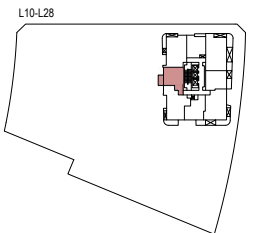
# B9

1 BED, 1 BATH + DEN  
INTERIOR: 566-639 SQ FT  
EXTERIOR: 48-370 SQ FT



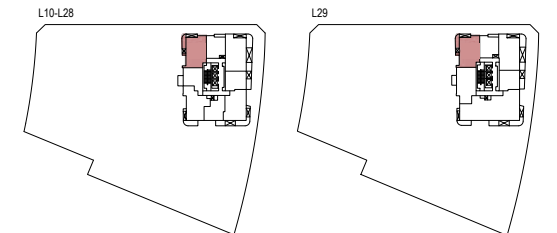
# B11

1 BED, 1 BATH + DEN  
INTERIOR: 591 SQ FT  
EXTERIOR: 69 SQ FT



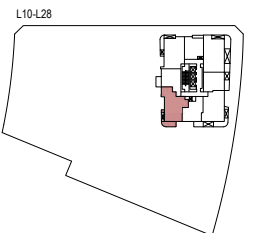
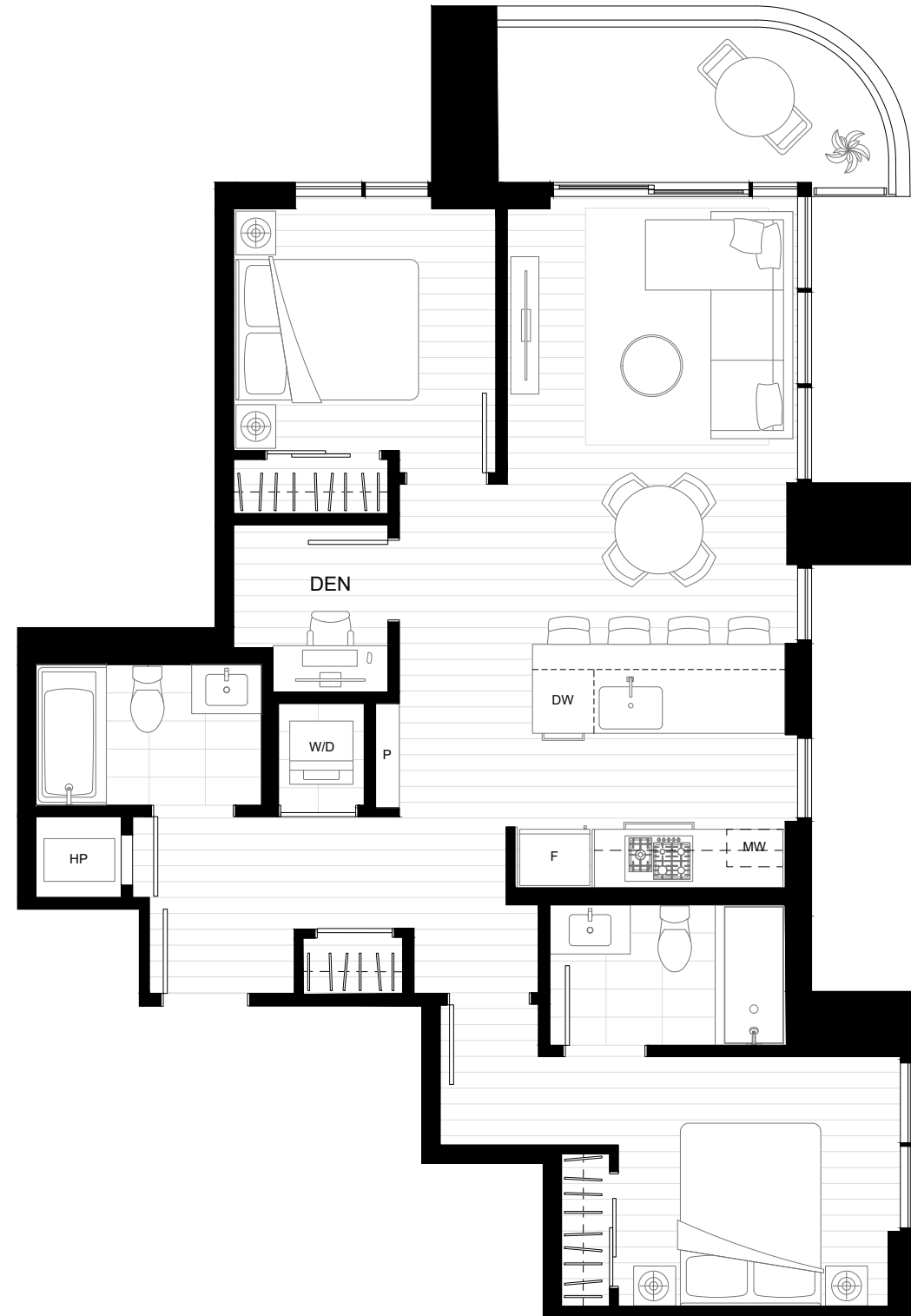
# D4

2 BED, 2 BATH + DEN  
INTERIOR: 831-834 SQ FT  
EXTERIOR: 61 SQ FT



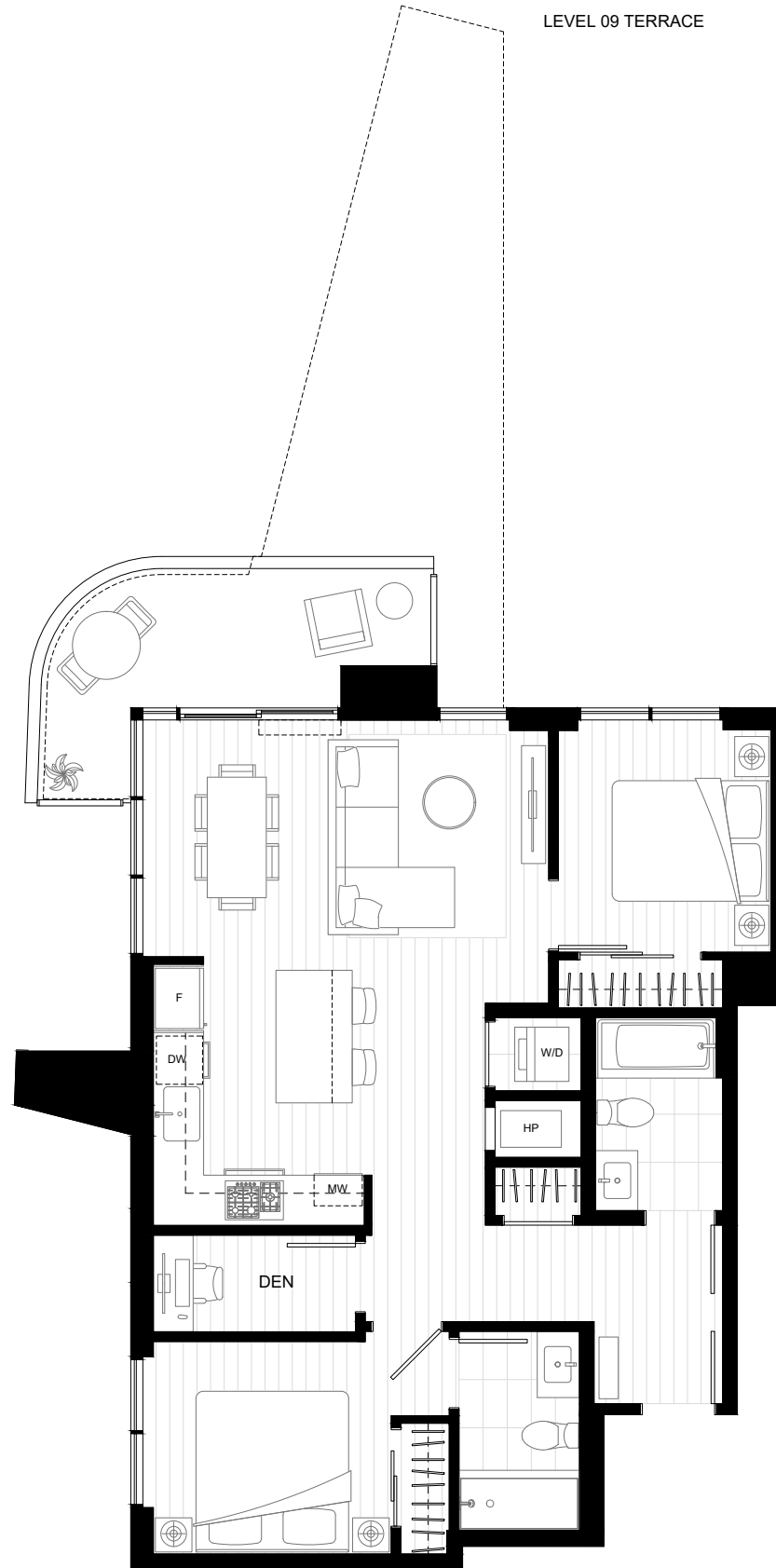
# D9

2 BED, 2 BATH + DEN  
INTERIOR: 857 SQ FT  
EXTERIOR: 74 SQ FT



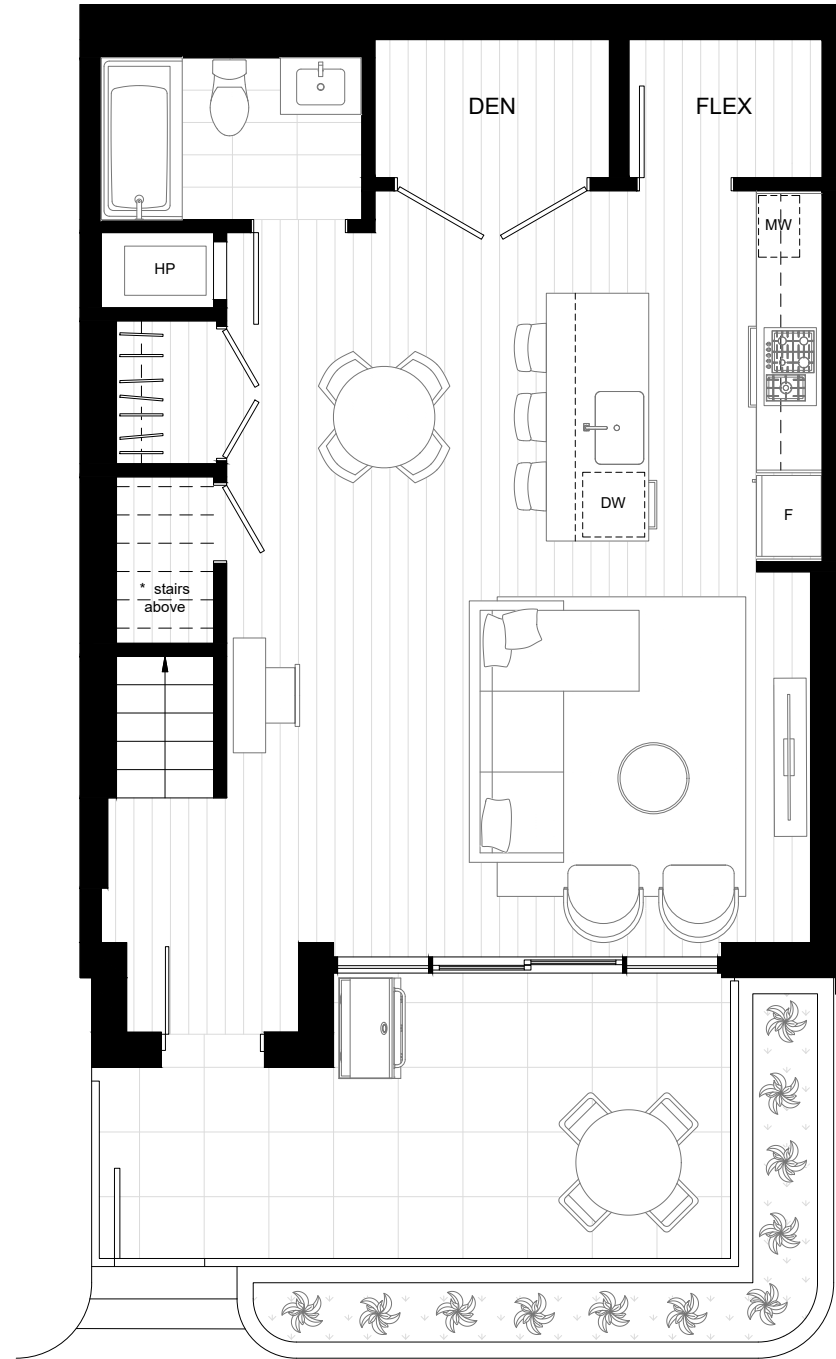
# D10

2 BED, 2 BATH + DEN  
INTERIOR: 865 SQ FT  
EXTERIOR: 90-290 SQ FT

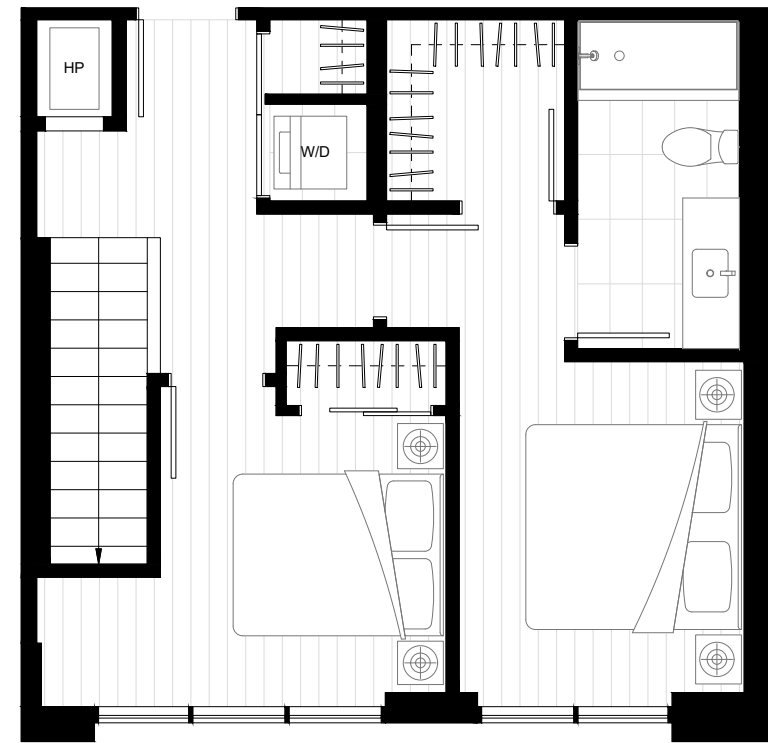


# CH2

2 BED, 2 BATH + DEN + FLEX  
INTERIOR: 1,212-1,276 SQ FT  
EXTERIOR: 151 SQ FT



LEVEL 1



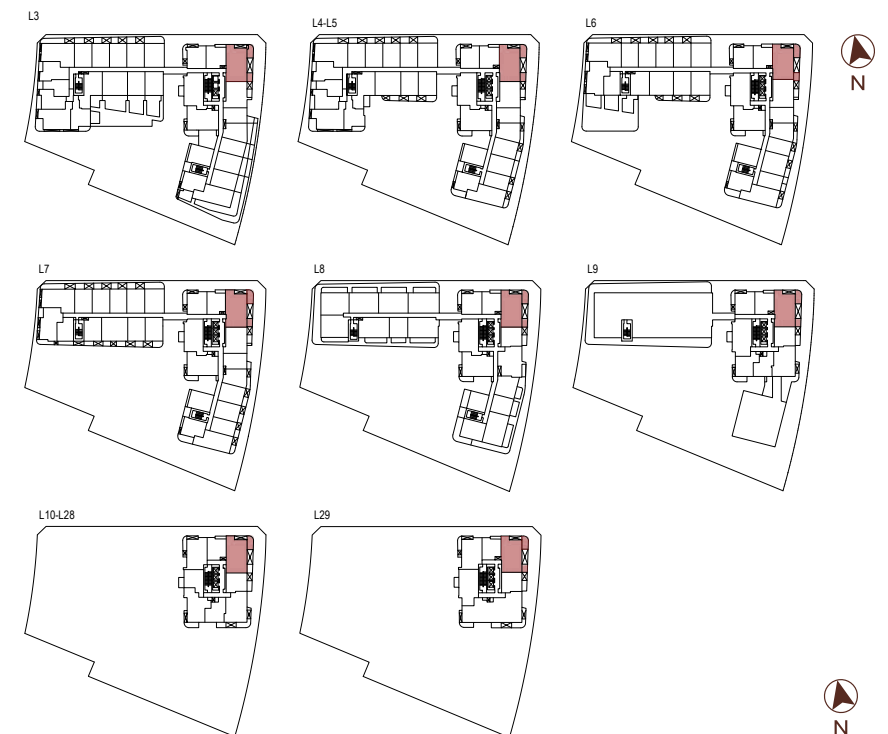
LEVEL 2





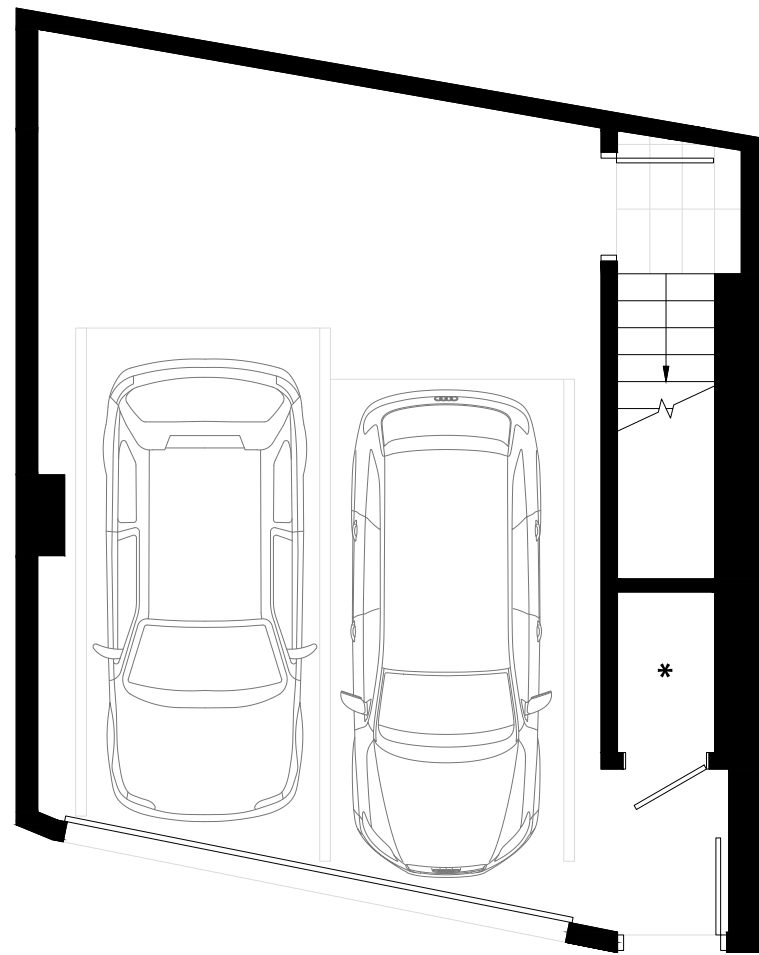
# E

3 BED, 2 BATH + DEN  
INTERIOR: 998-1,001 SQ FT  
EXTERIOR: 143 SQ FT

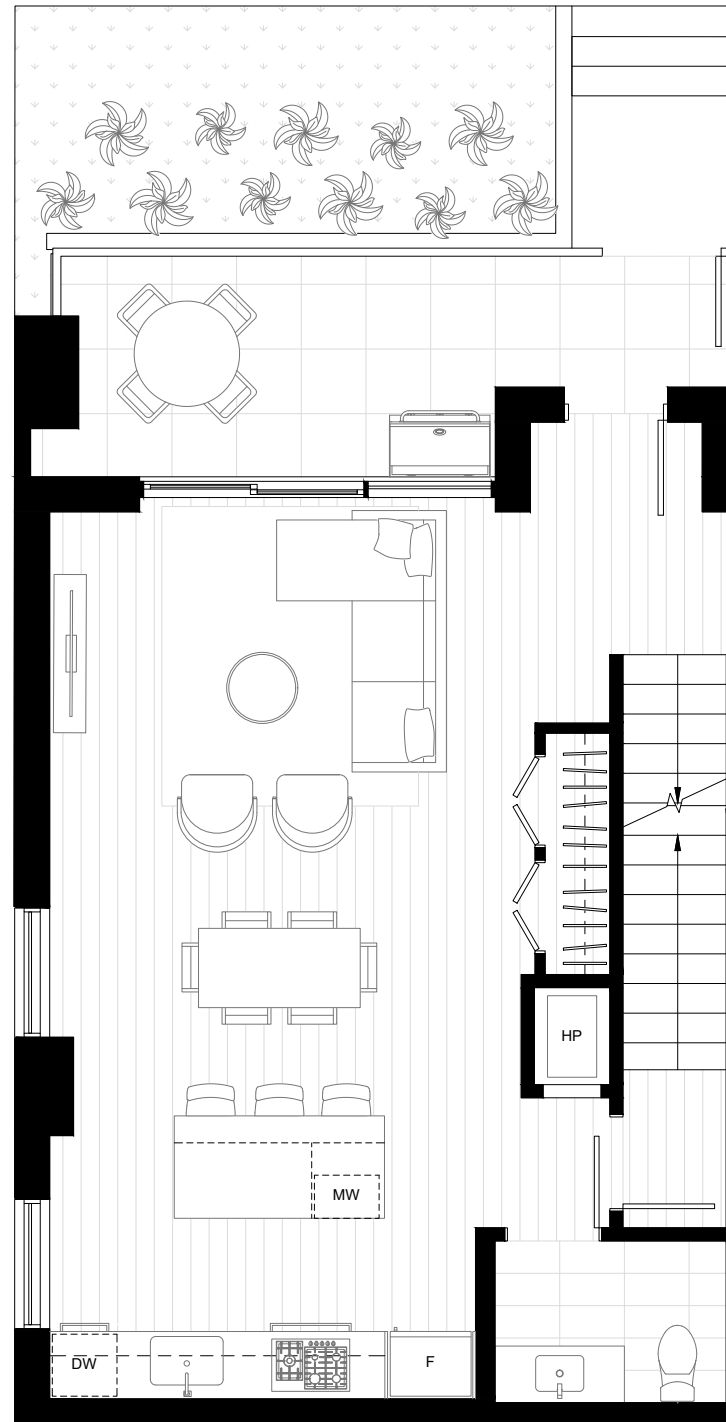


# TH3

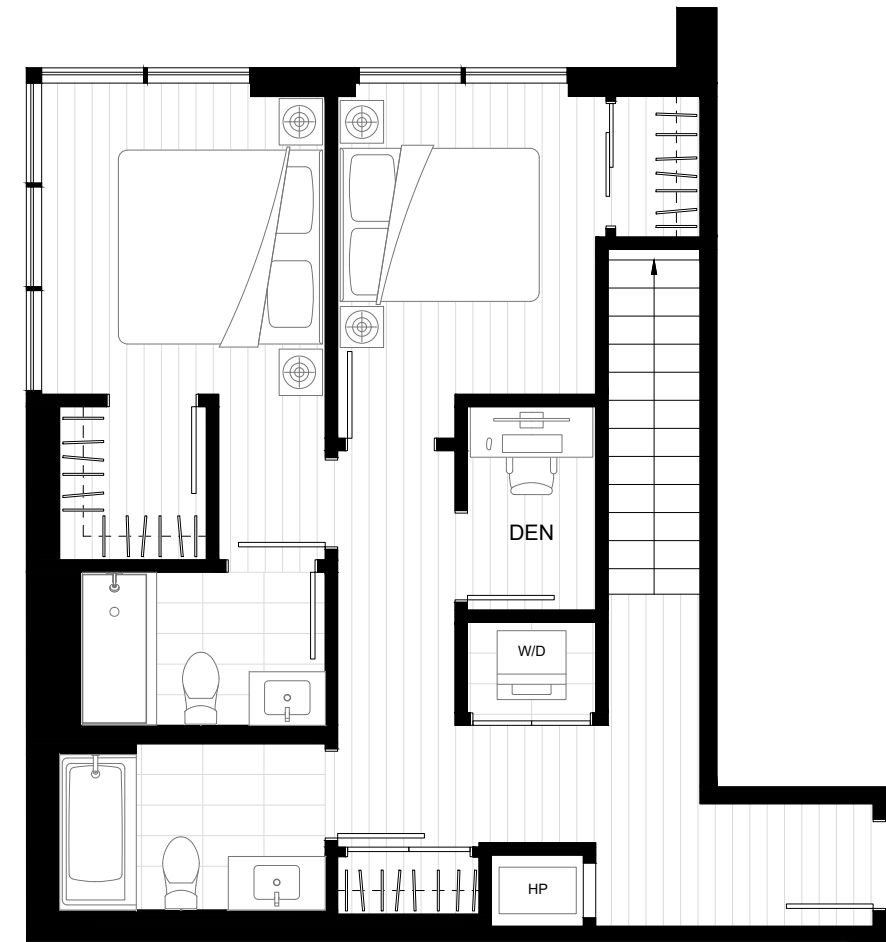
2 BED, 2.5 BATH + DEN  
INTERIOR: 1,420 SQ FT  
EXTERIOR: 123 SQ FT



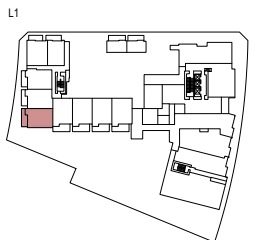
PRIVATE GARAGE



LEVEL 1

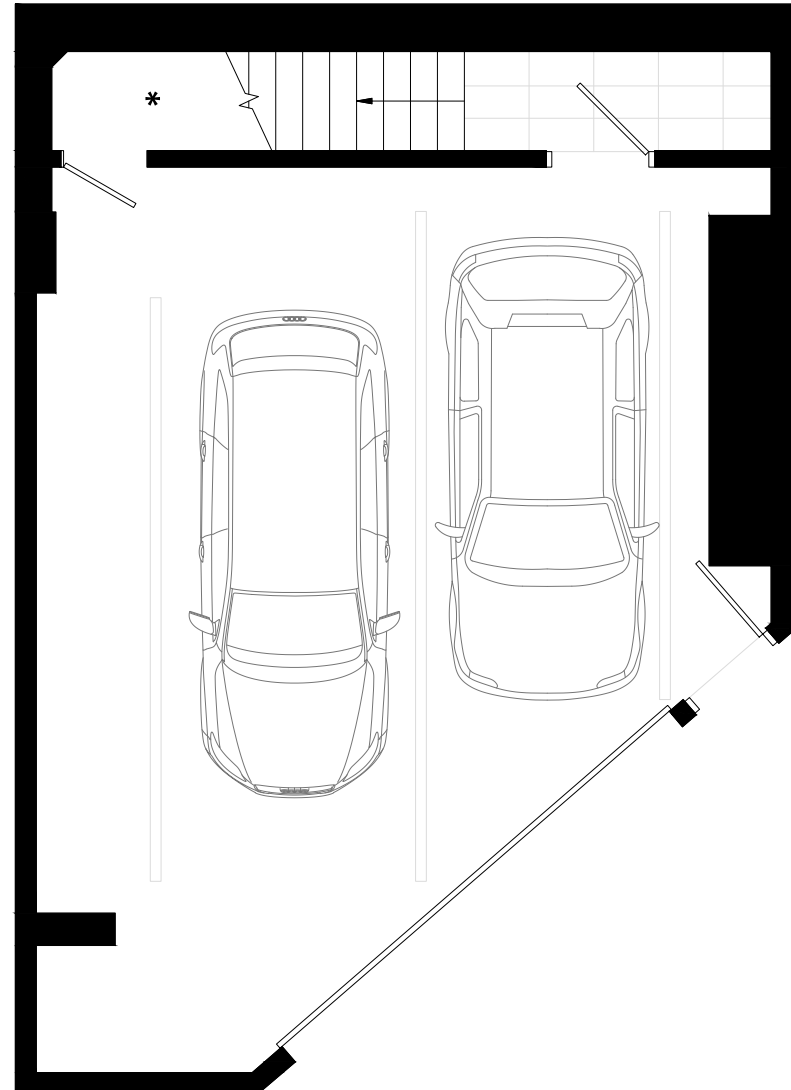


LEVEL 2

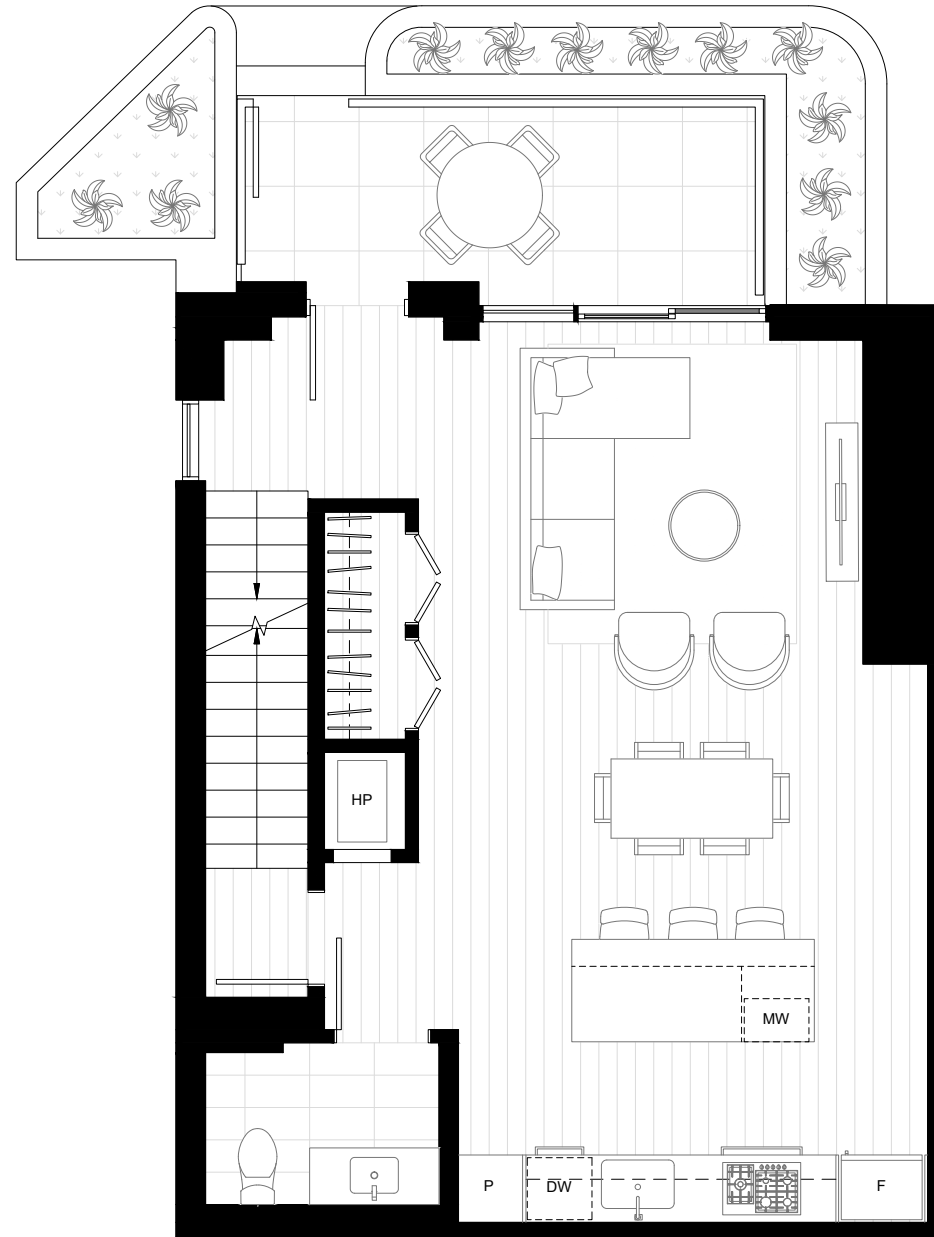


# TH4

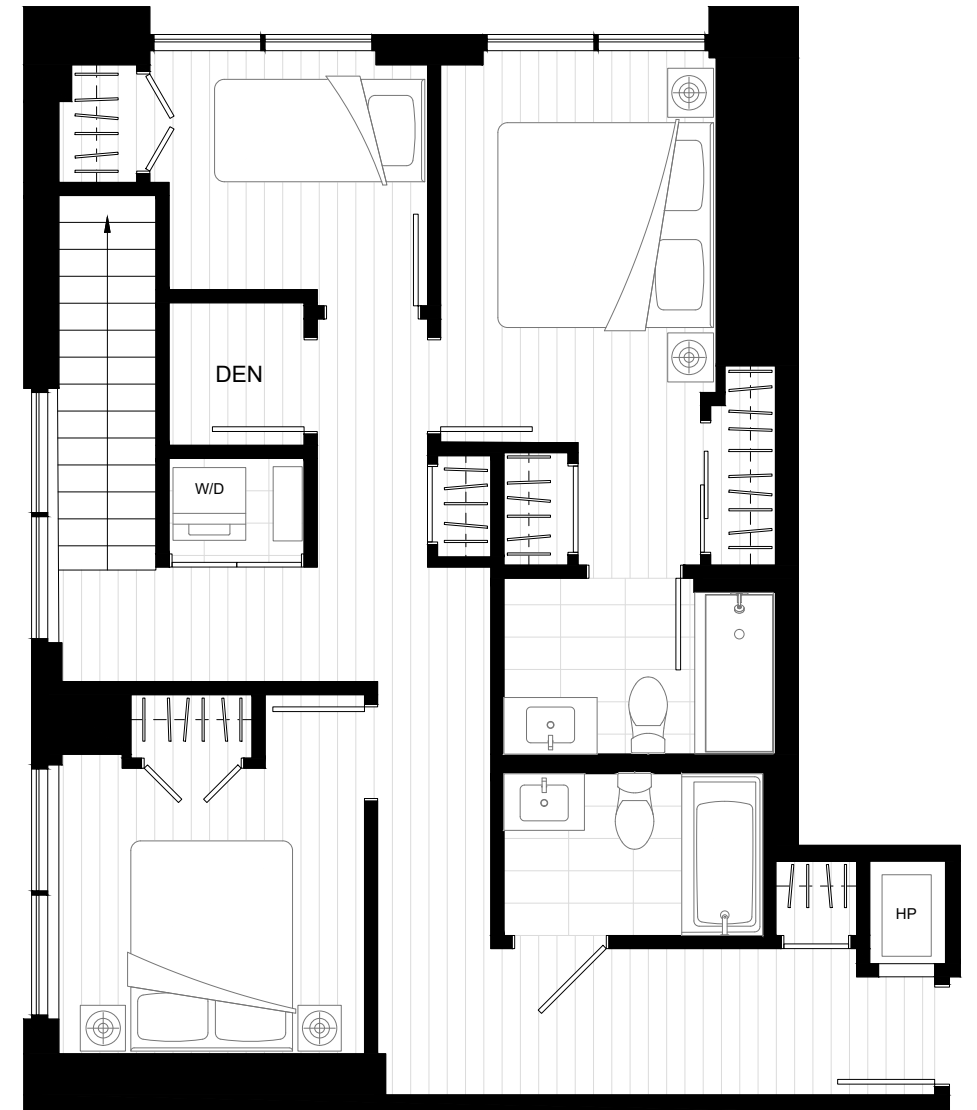
3 BED, 2.5 BATH + DEN  
INTERIOR: 1,570 SQ FT  
EXTERIOR: 93 SQ FT



PRIVATE GARAGE



LEVEL 1



LEVEL 2





# THE HEIGHT OF DESIGN.

Style is where Harlin rises above the rest. Step inside and discover an elevated space, tastefully appointed with exquisite features and finishes. From the elegant wide plank flooring to custom created colour palettes, design excellence is apparent in every detail.

## LIVING

- Choice of two designer colour schemes
- WiFi-enabled heating and cooling system for year-round comfort
- Wide plank laminate flooring throughout
- Front loading full size Whirlpool washer and dryer in 2+ bedroom homes
- Front loading 24" Samsung washer and dryer in studios and 1 bedroom homes
- Sleek roller shades throughout
- Shoe tower in primary bedroom closet
- USB outlet conveniently located in the kitchen and in the primary bedroom

## KITCHEN

- Fulgor appliance package in 2+ bedroom homes, including:
  - 30" integrated refrigerator with bottom freezer
  - 30" gas cooktop
  - 30" convection wall oven
  - 24" integrated dishwasher

- Fulgor appliance package in studio & 1 bedroom homes, including:
  - 22" integrated refrigerator with bottom freezer
  - 24" gas cooktop and convection wall oven in studios
  - 30" gas cooktop and convection wall oven in 1 bedrooms
  - 24" integrated dishwasher
- Built-in Panasonic microwave
- Stainless steel AEG hood fan
- Single-bowl undermount sink with pull-down faucet in matte black or brushed nickel
- Soft-close cabinetry with seamlessly integrated hardware
- Recessed under-cabinet LED strip lighting
- Quartz countertops and backsplash
- Efficient under-sink recycling centre
- Convenient corner storage system in select homes

## BATHROOM

- Energy-efficient in-floor heating in the primary ensuite
- Frameless glass shower with wall mounted rain shower head in matte black or brushed nickel in the primary ensuite

- 24" metal shower niche in the primary ensuite
- Soft-close cabinetry with seamlessly integrated hardware
- Mirrored vanity medicine cabinet with strip lighting in primary ensuite
- Undermount porcelain sink with Kohler single handle faucet in matte black or brushed nickel
- Quartz countertops
- Large format porcelain floor and shower tile
- Tiled vanity wall in the primary ensuite
- Kohler dual-flush toilet
- Full size soaker tub

## SAFETY AND SECURITY

- Daytime concierge
- Secure underground parking
- Enterphone at lobby and parkade entrances with restricted elevator access
- Comprehensive, industry-leading 2-5-10 year new home warranty by Travelers

# WE BUILD MORE THAN SKYLINES.

What began as a local family business over 60 years ago has grown into one of Western Canada's most trusted companies. While we've built more than 7,000 homes in 100 communities and manage over 3 million square feet of commercial space, it's our reputation for fair play and adding value to people's lives that makes us most proud.

At Wesgroup, we do development differently. From planning and design to overseeing every facet of construction, and our extensive Customer Care program, each phase of a project is done in-house. This ensures reliability, consistency, and most importantly—accountability. When you choose a home from Wesgroup, it's with the knowledge and security that we stand behind the communities that we build. After all, we live here too.



HARLINBYWESGROUP.CA