



g'uilden

GUILD FORD

Beautifully Envisioned.
Naturally Refined.
Infinitely Well Connected.

The location you desire, the home you want now! The selection of contemporary studio, 1-, 2- and 3- bedroom urban condominiums at Guilden will offer incomparable access to shopping, dining, entertainment and a natural environment. The result will be a seamless lifestyle with front door access to bustling urban streets and back door access to endless outdoor adventures. Every home is designed for liveability, ease and enjoyment. YOUR future is now...



The Vibrancy of Guildford Living



Great Expectations Await in Guildford - Connected, Vibrant and Diverse

Guilden is where your family's next phase of life begins. Guilden has found its place along a beguiling stretch of this burgeoning metropolis; one that offers the perfect blend of nature and urban amenities. Designed with walkability in mind, and interspersed with some of Surrey's best parks, like Green Timbers, Tynehead and Surrey Bend Regional Park, this family-friendly neighbourhood has it all! You are also on the doorstep to Guildford Town Centre, as well as great schools, such as Hjorth Road Elementary and Guildford Park Secondary. And that's just the start!





Guildford Town Centre is a true retail destination with more than 250 stores defining a stunning shopping experience.

20+ Dining

With easy access to locally-influenced and international fare, living at Guilden means you are never far from a great meal. With everything from chef driven dining to quick casual bites, seek out one of the many restaurants right here in your neighbourhood: Famoso Neapolitan Pizzeria, Sabai Thai or Hanako Japanese Restaurant, Texx Big Burger, Chipotle Mexican Grill or Migoto Sushi.



250+ Stores

There's no shortage of shopping, dining and entertainment selections in Guildford. Offering a mix of services, independent shops, and department and big box stores, like The Bay, Walmart, Uniqlo, Old Navy, London Drugs, Landmark Cinemas; all adds up to Guilden's fabulous lifestyle.



18+ Services

Out & about... immerse yourself in a world of endless services as you explore the vibrant heart that is Guildford!



Guildford Recreation Centre

Guildford Recreation Centre offers more than just fun and fitness. This state-of-the-art sporting facility cater to families, children and everyone in-between to keep the community fit and healthy. There's an 8-lane, 50m FINA-standard Olympic size competition pool, leisure pool, steam room, three gyms, fitness studio... the list goes on and on!



Parks & Pools

For those who love spending time outdoors, head to Green Timbers Urban Forest Park, an urban oasis boasting 10 km of nature trails to explore, a fishing lake, and picnic areas. Cool down on those hot summer days by taking a dip at either Hjorth Road Park or Holly Park outdoor pools, or take the kids for some waterpark fun at Hawthorne Rotary Park.



You Belong Here... Guilden Offers an Idyllic Lifestyle

When you live at Guilden, you can rest easy knowing that you have a daily routine perfectly tailored to your lifestyle. Whether you are looking for a relaxing night out at a quaint restaurant, a fun-filled day spent shopping and exploring, or an active regime utilizing the many greenspaces nearby, everything you've been searching for is within reach.



SHOPPING

Talk about convenience and great prices... everything from groceries to diapers, to pet supplies to clothing, and everything in between, is right across the street at the Real Canadian Superstore.



TRANSIT

With a number of transit choices nearby, you are easily connected to surrounding municipalities, including Downtown Vancouver, Skytrain stations, YVR and beyond.



GUILDFORD TOWN CENTRE

Guildford Town Centre's endless array of shops and services are sure to fulfil the needs of the fashionista, shoe-o-holic, sports enthusiast, to name a few. This shopping mecca offers a plethora of choices.



DINING

An inspired restaurant collection with chef driven menus, quick casual bites and bustling patios are minutes from your doorstep. Your cravings are sure to be satisfied.



SCHOOLS

Families will love that Guilden is close to great schools. Whether it's elementary, high school or post-secondary, we have you covered.



PARKS

Surrey boasts world-class parks. Home to some pristine parks, Guilden is perfectly positioned close to the Green Timbers Urban Forest Park, an oasis in the city!



CAFES

Craving a cup of java or another specialty drink? You have a number of cafes and coffee shops to choose from to meet up with friends.



LIBRARY

A treasure trove of knowledge and fun, the Guildford Library is a short walk away. You can borrow books, audio books and attend free events, book clubs, homework help sessions and computer classes.



LOCAL SHOPPING

As the largest Asian grocery store chain in the country, T&T Supermarket has everything the gourmet and aspiring chef wants or even doesn't realize they want! With weekly specials, your wallet will thank you too.



Explore the Neighbourhood

URBAN CONVENIENCE

- 1 REAL CANADIAN SUPERSTORE
- 2 WALMART SUPERCENTRE
- 3 LONDON DRUGS
- 4 T&T SUPERMARKET
- 5 HANNAM SUPERMARKET
- 6 APPLE STORE
- 7 HUDSON'S BAY
- 8 M&M FOOD MARKET
- 9 BC LIQUOR STORE
- 10 HENLONG MARKET
- 11 SHOPPERS DRUG MART
- 12 BOSLEY'S
- 13 SAVE-ON-FOODS
- 14 BUY-LOW FOODS

FUN & FITNESS

- 1 GUILDFORD RECREATION CENTRE
- 2 LANDMARK CINEMAS
- 3 ANYTIME FITNESS
- 4 GUILDFORD LIBRARY

DINING

- 1 BROWNS SOCIALHOUSE
- 2 EARLS KITCHEN + BAR
- 3 MAGURO JAPANESE
- 4 BUBBLE WAFFLE CAFE
- 5 BIG CHICKEN TOWN
- 6 BOSTON PIZZA
- 7 STEVE'S POKE BAR
- 8 MCDONALD'S
- 9 COFFEE MONSTER
- 10 SEOUL GRILL HOUSE
- 11 RED ROBINS
- 12 MINDFUL JUICE BAR
- 13 SUSHI CALIFORNIA
- 14 SABAI THAI

EDUCATION

- 1 HJORTH ROAD ELEMENTARY
- 2 GUILDFORD PARK SECONDARY
- 3 MARY JANE SHANNON ELEMENTARY
- 4 HOLLY ELEMENTARY
- 5 FORSYTH ROAD ELEMENTARY
- 6 JOHNSTON HEIGHTS SECONDARY
- 7 MOUNTAINVIEW MONTESSORI SCHOOL
- 8 SIMON FRASER UNIVERSITY - SURREY CAMPUS



“This was an opportunity to be involved in the shaping of Guildford Town Centre, an exciting and highly sought-after community.”

John Rempel, President, RDG Management



With Guilden, RDG Management is transforming a whole city block to bring a large-scale community to the Guildford area – one set to become a landmark in this vibrant and thriving community. Seen as the gateway from Surrey into the Guildford area, Guilden is not only a great addition to the 104th corridor but offers more opportunities for expansion in the future. Live the life you have always wanted in a hand-picked location that offers everything you need and more. RDG Management doesn't just build homes, they build communities.

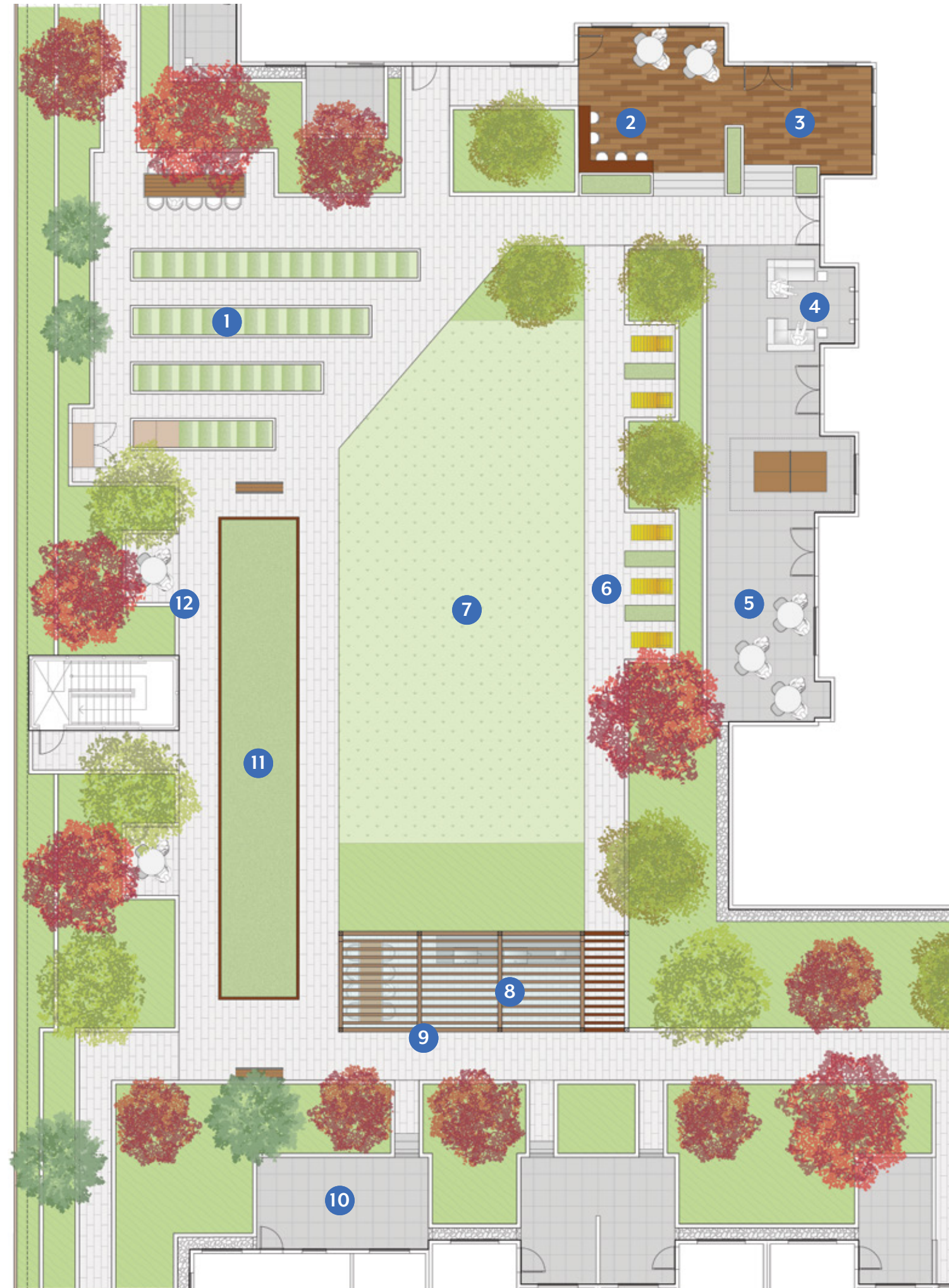


“Located in the heart of Guildford, Guilden is a contemporary expression of modern living.”

Colin A. Hogan, Architect, Focus Architecture

Guilden’s design features bright open living spaces with generous private patios and decks. The buildings embrace a west-facing courtyard with a collection of outdoor spaces, which are all accessible from The Guilden Club. A traditional red brick base ties the buildings to the ground, while soaring roofs provide weather protection and create a dynamic form.

YOUR PRIVATE OASIS



“For Guilden, we had a clear focus on promoting social and physical wellbeing, with larger and more intimate spaces creating different areas to encourage social interaction.”

David Stoyko, Principal, David Stoyko Landscape Architect



THE GUILDEN CLUB BBQ AREA



YOGA AND EXERCISE DECK



BOCCE COURT

12 Outdoor Amenities

Now this is a place where fun, and occasionally work, naturally comes into play. Welcome to the resident-only amenities, The Guilden Club—your go-to spot for all things recreation and everything community. Host the perfect gathering with extensive indoor-outdoor dining and lounge experience in your own private retreat; catch a friendly game of bocce; or enjoy the convenience of your own business-study centre and fitness studio. From relaxation to recreation to work, it's all here.

- 1 Urban Agriculture
- 2 Outdoor Work Area with Tables
- 3 Yoga and Exercise Deck
- 4 Social Seating with Fire Place
- 5 Amenity Patio
- 6 Lounge Chair Seating
- 7 Flexible Lawn Area
- 8 Outdoor Kitchen and Dining
- 9 Trellis
- 10 Private Patios
- 11 Bocce Court
- 12 Quiet Seating Nooks



SEATING AREA



FLEXIBLE LAWN AREA



Celebrate the good life: a sleek, contemporary lounge with a full kitchen blends effortless comfort with lounge seating. Host an event in the dining area with a fully-equipped kitchen.

Expansive fitness centre floods with natural light, adds a feeling of motivation.

Your out-of-town family or guests can rest in our well-appointed guest suites in both buildings.

A billiards room offers a chance to enjoy friendly games.

A 2nd-floor amenity space in Building One welcomes you with even more opportunity to engage in FUN; like multi-purpose rooms for various activities, all of which enhances “what true sense of community” is all about.

At Guilden, home is filled with thoughtful features and practical spaces that accommodate all life's precious moments. Gather family and friends as you prepare a meal in the kitchen, an elegant space with premium quartz countertops, gorgeous porcelain tile backsplash, stainless steel appliances and gas ranges. Carefully curated two-tone flat panel cabinetry to store your kitchen essentials. Pull up a barstool for morning coffee at the kitchen island.



“To achieve a sense of calm and tranquility, we incorporate organic finishes with clean lined textural materials, as well as adding elements that offered a stylish design.”

Mae Suffron, Principal, The Creative DesignWorks



Indulge in Serenity in Your Own Spa-Inspired Bathroom — Where Comfort and Tranquility Await

Luxurious bathrooms embody the perfect balance of comfort and serenity. Fully tiled ensuite with custom tiled spa-inspired shower with large shower head delivers a real sense of airy, open spaciousness. In the evening, luxuriate in the elegant deep soaker tub; one that truly feels like your own private quiet retreat.





The master bedroom is a relaxing sanctuary to unwind in after a long day. The contemporary design keeps this master bedroom timeless and serene. The large window bathes the room with natural light, while the neutral walls are your canvas to personalize your space. Boasting porcelain tile flooring, elegant spa-like shower and sleek quartz countertops, you're calming ensuite awaits.

CRAFTING ARTISTRY

We have been creating vibrant communities for over 50 years. With a trusted team committed to enduring quality, we enhance the way people live today.

With five decades of experience working in the construction and development industry, RDG Management has built a reputation for crafting and managing creative development solutions for unique communities.

Our story begins with our three core values: integrity, collaboration and community. These are integral to every relationship, behaviour and decision. Our mission is to provide purchasers with homes that meet and exceed the highest industry standards. These values and mission statement have guided us since our humble beginnings 50 years ago, and as we continue to grow, our promise of building homes in places where people want to live, work and play, one community at a time.

Striking a delicate balance: part craft, part science, part business. That's our difference. You may not be able to put your finger on it. But when it combines with the quality, distinctiveness, and customer care we are known for, you will know.



SOLEIL, WHITE ROCK



THE MONARCH, VANCOUVER



THE CORNERS, SURREY



CRIMSON, SURREY



WEXLEY, LANGLEY



THE WEX, LANGLEY



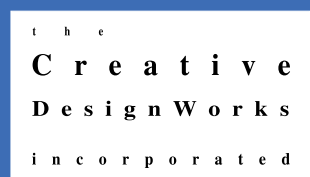
ALEXANDER SQUARE, LANGLEY



THE RIDGE AT BOSE FARMS, SURREY



David Stoyko
Landscape Architect



BUILDING TEAM

ARCHITECTURE

FOCUS ARCHITECTURE

Drawing on experience that spawns more than 50 years, Focus Architecture has been dedicated to producing exceptional design. Since then, they have developed an extensive portfolio of remarkable, innovative and transformative multi-family and commercial projects across British Columbia.

LANDSCAPE ARCHITECT

DAVID STOYKO

An experienced professional landscape architect, David Stoyko believes clear and careful detailing turns design into successful reality. He has worked on major projects in British Columbia and the United States, including residential communities, resorts, commercial and mixed-use developments, public parks and facilities.

INTERIOR DESIGN

THE CREATIVE DESIGN WORKS

Award-winning, The Creative Designworks crafts spaces where people want to be – places where life happens, connections are made, and experiences are memorable. They understand that the very essence of great design is about more than aesthetics, it is about understanding how people live.

MARKETING & SALES

FIFTH AVE

Experienced and trusted for over 40 years, Fifth Avenue Real Estate Marketing has focused on a singular goal of Bringing People Home. Fifth Avenue specializes in bringing to market well-designed multi-family projects, including townhomes, low-rise condominiums, and high-rise developments across British Columbia's major markets.

In our continuing effort to improve and maintain the high standard of the Guilden development, the developer reserves the right to modify or change plans, layouts, specifications, features, including appliances, and prices without notice. Materials may be substituted with equivalent or better at the developer's sole discretion. All dimensions and sizes are approximate and are based on architectural measurements. As reverse, flipped and/or mirrored plans occur throughout the development please see architectural plans for current unit layout, if material to your decision to purchase. Illustrations, renderings and marketing materials provided are an artist's conception and are intended as a general reference only, all subject to change without prior notice and not to be relied upon. Patio dimensions may vary, and raised ceilings are available in select homes. For further details, please see a sales representative and refer to the architectural plans. Please ask one of the helpful sales staff to reference the current architectural set of construction drawings for the most accurate dimensions and other details at time of sale. E.&O.E. Sales & Marketing provided by Fifth Avenue Real Estate Marketing Ltd. 604-583-2212

gildenliving.com

DEVELOPER



MARKETING & SALES BY

