

OAK & STONE

BY ABSTRACT



A1

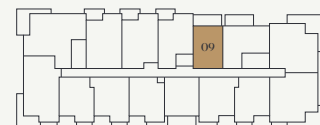
Jr. 1 Bed + 1 Bath

Interior: 454 SF

Exterior: 104 SF

Total: 558 SF

LEVEL 2-6



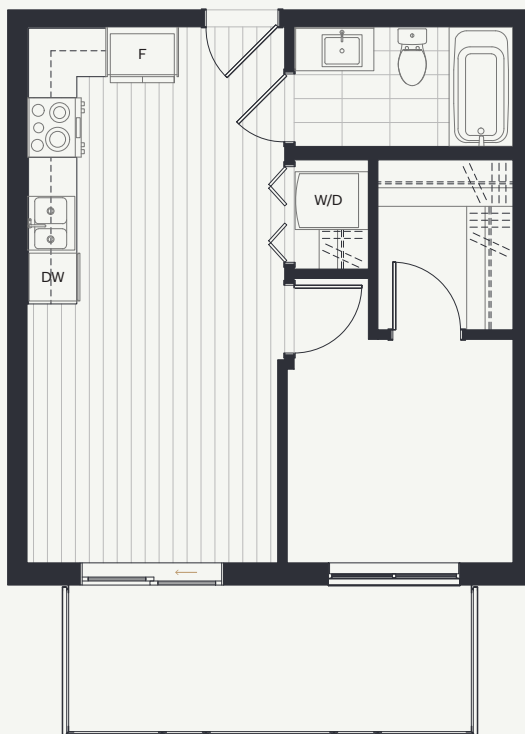
oakstonevictoria.com

Dimensions, sizes, specifications, layouts and materials are approximate only and subject to change without notice. E.&O.E.

 **ABSTRACT**

OAK & STONE

BY ABSTRACT



B1

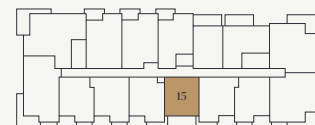
1 Bed + 1 Bath

Interior: 484 SF

Exterior: 103 SF

Total: 587 SF

LEVEL 2-6



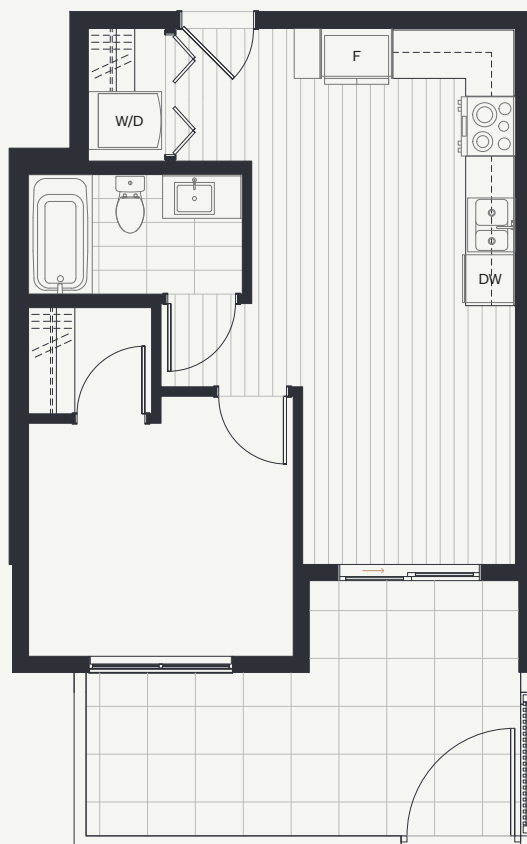
oakstonevictoria.com

Dimensions, sizes, specifications, layouts and materials are approximate only and subject to change without notice. E.&O.E.

 **ABSTRACT**

OAK & STONE

BY ABSTRACT



B2

LEVEL 1

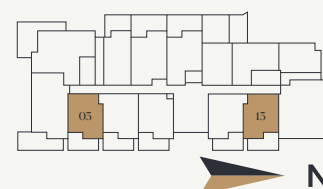
1 Bed + 1 Bath

Interior: 516 SF

Exterior: 52 SF

Total: 568 SF

LEVEL 1



oakstonevictoria.com

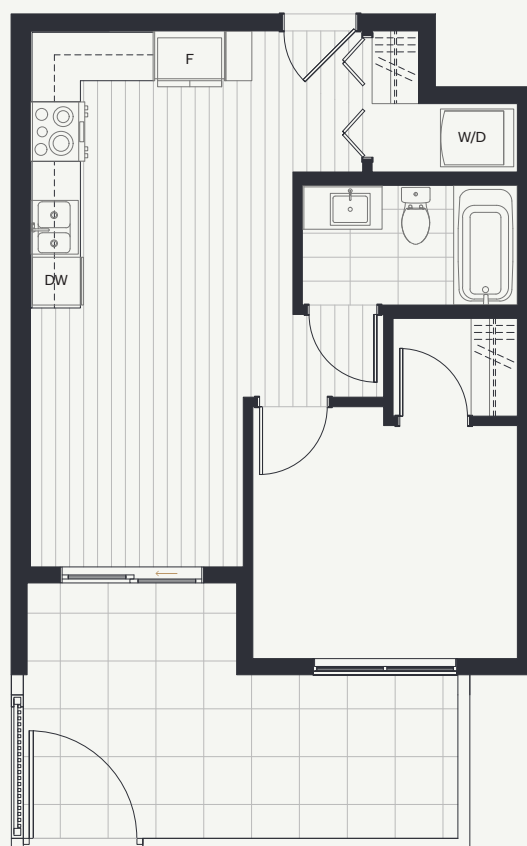
Dimensions, sizes, specifications, layouts and materials are approximate only and subject to change without notice. E.&O.E.



ABSTRACT

OAK & STONE

BY ABSTRACT



B3
LEVEL 1

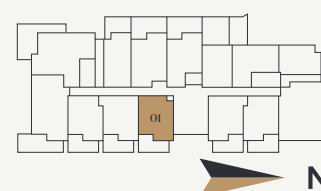
1 Bed + 1 Bath

Interior: 518 SF

Exterior: 652 SF

Total: 670 SF

LEVEL 1



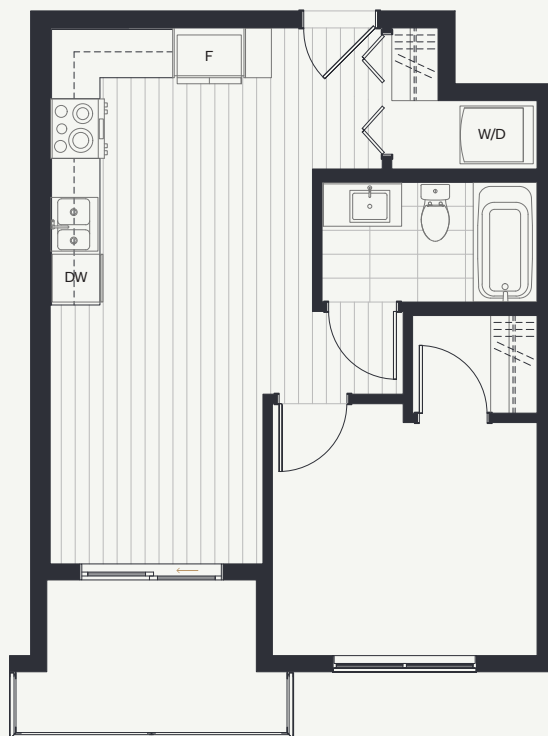
oakstonevictoria.com

Dimensions, sizes, specifications, layouts and materials are approximate only and subject to change without notice. E.&O.E.

ABSTRACT

OAK & STONE

BY ABSTRACT



B3
LEVEL 2-6

1 Bed + 1 Bath

Interior: 518 SF

Exterior: 59 - 62 SF

Total: 577 - 620 SF

LEVEL 2-6



oakstonevictoria.com

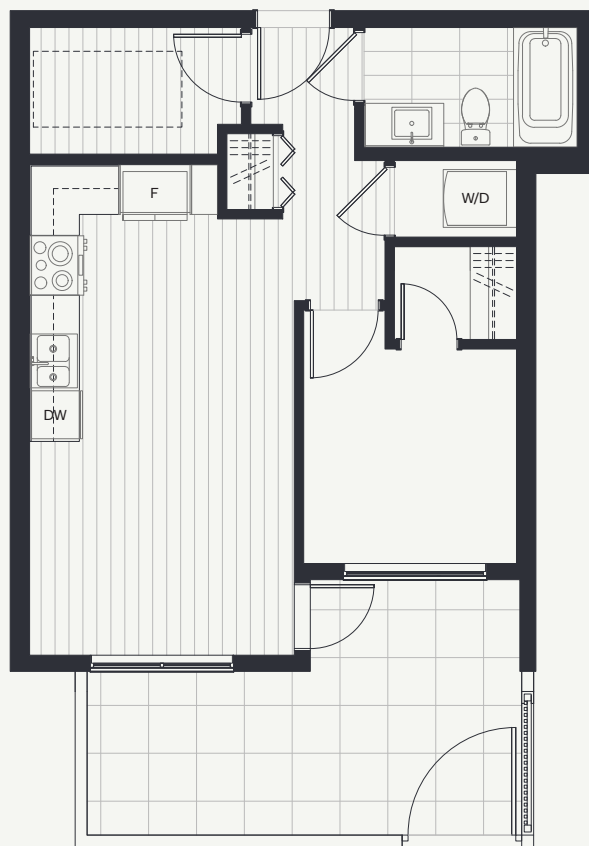
Dimensions, sizes, specifications, layouts and materials are approximate only and subject to change without notice. E.&O.E.



ABSTRACT

OAK & STONE

BY ABSTRACT



C1
LEVEL 1

1 Bed + Den + 1 Bath

Interior: 546 SF

Exterior: ~~552~~ 552 SF

Total: ~~607~~ 607 SF

LEVEL 1



oakstonevictoria.com

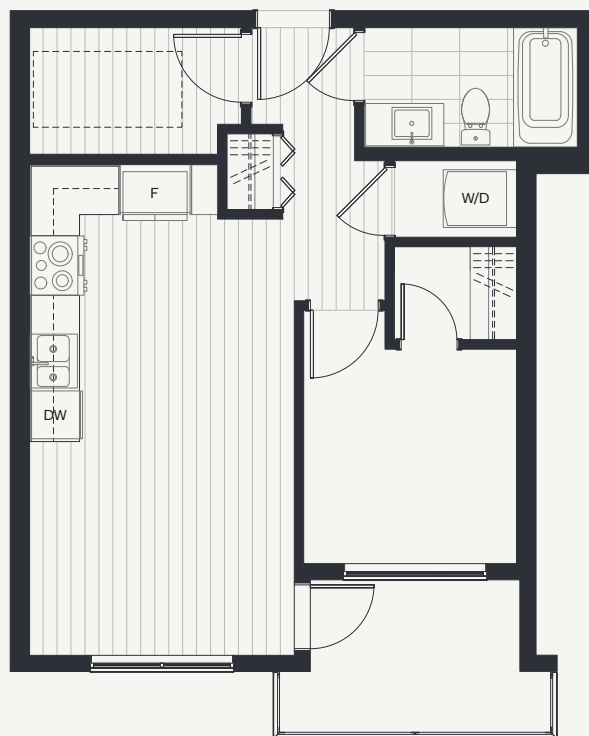
Dimensions, sizes, specifications, layouts and materials are approximate only and subject to change without notice. E.&O.E.



ABSTRACT

OAK & STONE

BY ABSTRACT



C1
LEVEL 2-6

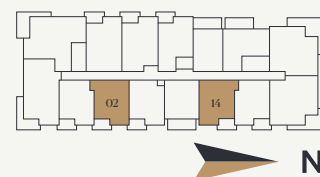
1 Bed + Den + 1 Bath

Interior: 546 SF

Exterior: 59 - 62 SF

Total: 605 - 609 SF

LEVEL 2-6



oakstonevictoria.com

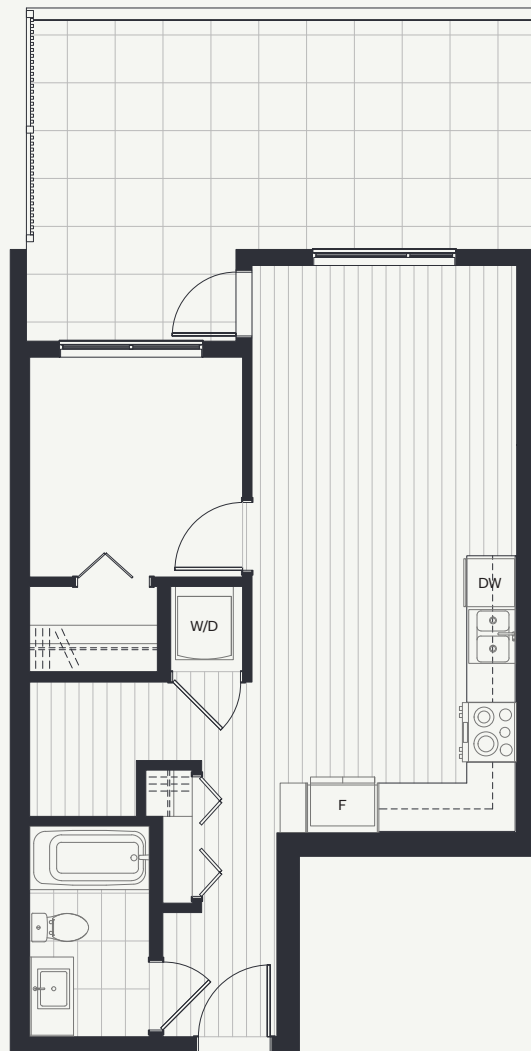
Dimensions, sizes, specifications, layouts and materials are approximate only and subject to change without notice. E.&O.E.



ABSTRACT

OAK & STONE

BY ABSTRACT



C2
LEVEL 1

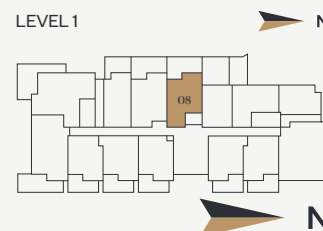
1 Bed + Den + 1 Bath

Interior: 578 SF

Exterior: ~~228~~ 228 SF

Total: ~~806~~ 806 SF

LEVEL 1



oakstonevictoria.com

Dimensions, sizes, specifications, layouts and materials are approximate only and subject to change without notice. E.&O.E.

 **ABSTRACT**

OAK & STONE

BY ABSTRACT



C2
LEVEL 2-6

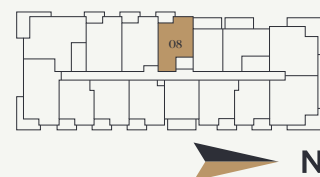
1 Bed + Den + 1 Bath

Interior: 578 SF

Exterior: 59 - 028 SF

Total: 637 - 800 SF

LEVEL 2-6



oakstonevictoria.com

Dimensions, sizes, specifications, layouts and materials are approximate only and subject to change without notice. E.&O.E.

 **ABSTRACT**

OAK & STONE

BY ABSTRACT



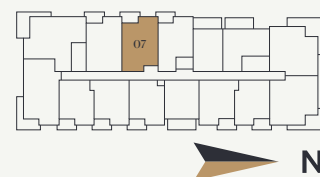
1 Bed + Den + 2 Bath

Interior: 643 SF

Exterior: 61 - ~~254~~ SF

Total: 704 - ~~808~~ SF

LEVEL 2-6



oakstonevictoria.com

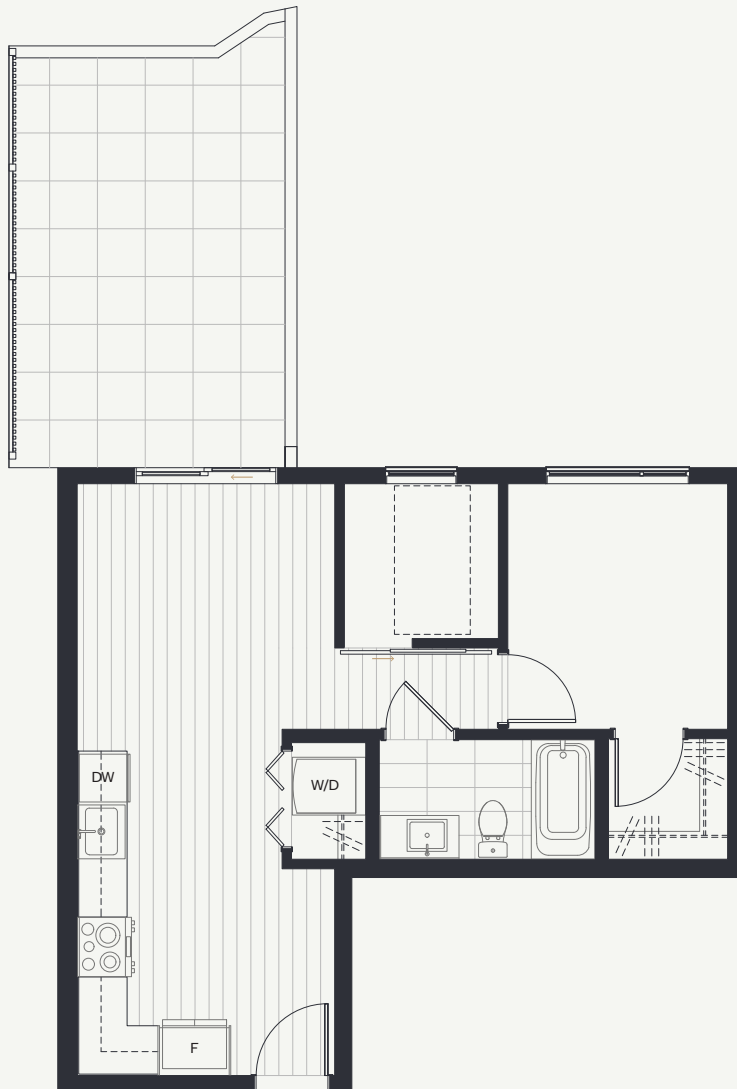
Dimensions, sizes, specifications, layouts and materials are approximate only and subject to change without notice. E.&O.E.



ABSTRACT

OAK & STONE

BY ABSTRACT



D1
LEVEL 1

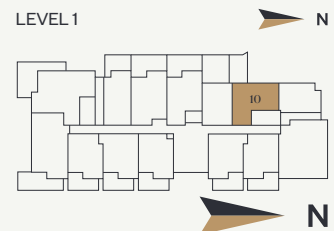
Jr. 2 Bed + 1 Bath

Interior: 562 SF

Exterior: 102 SF

Total: 664 SF

LEVEL 1



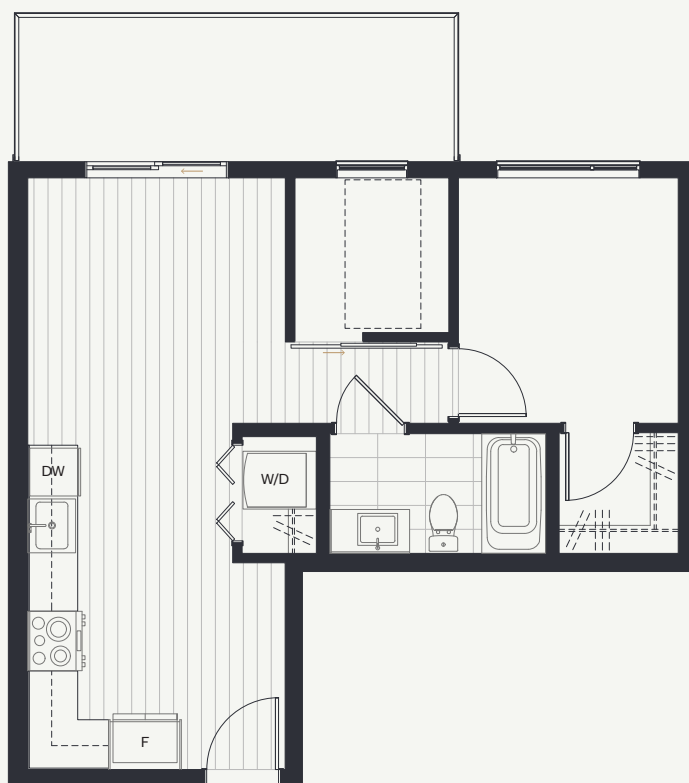
oakstonevictoria.com

Dimensions, sizes, specifications, layouts and materials are approximate only and subject to change without notice. E.&O.E.

 **ABSTRACT**

OAK & STONE

BY ABSTRACT



D1
LEVEL 2-6

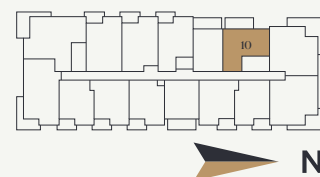
Jr. 2 Bed + 1 Bath

Interior: 562 SF

Exterior: 102 - 194 SF

Total: 664 - 756 SF

LEVEL 2-6



oakstonevictoria.com

Dimensions, sizes, specifications, layouts and materials are approximate only and subject to change without notice. E.&O.E.



ABSTRACT

OAK & STONE

BY ABSTRACT



E1

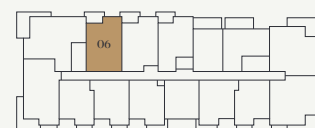
Jr. 2 Bed + 2 Bath

Interior: 670 SF

Exterior: 61 - 65 SF

Total: 731 - 735 SF

LEVEL 2-6



oakstonevictoria.com

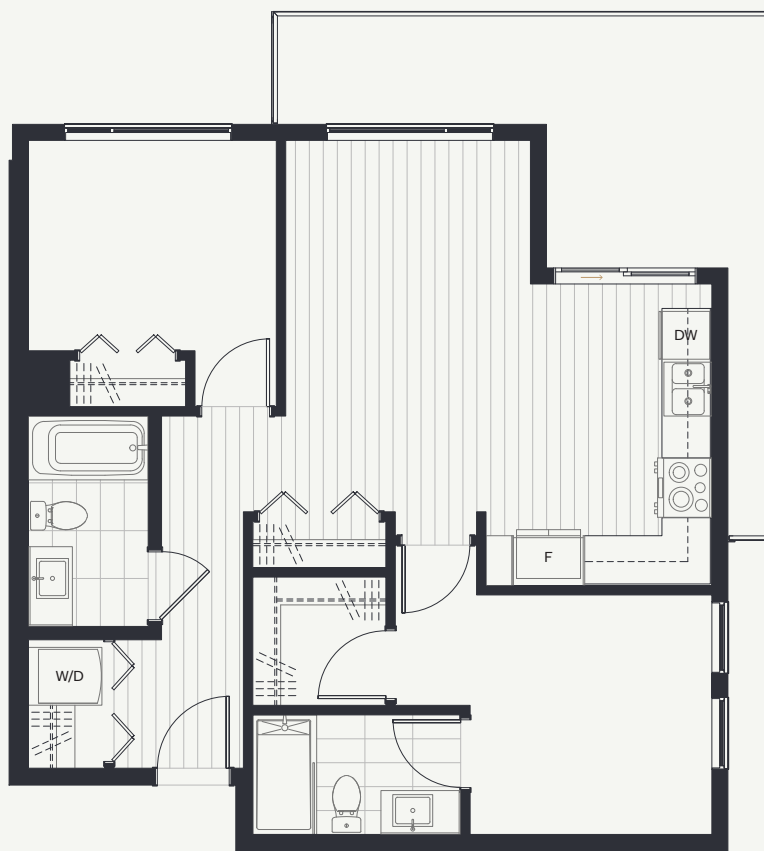
Dimensions, sizes, specifications, layouts and materials are approximate only and subject to change without notice. E.&O.E.



ABSTRACT

OAK & STONE

BY ABSTRACT



F1

LEVEL 2-6

2 Bed + 2 Bath

Interior: 797 SF

Exterior: 167 - 182 SF

Total: 964 - 979 SF

LEVEL 2-6



oakstonevictoria.com

Dimensions, sizes, specifications, layouts and materials are approximate only and subject to change without notice. E.&O.E.



ABSTRACT

OAK & STONE

BY ABSTRACT



F2

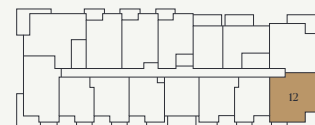
2 Bed + 2 Bath

Interior: 797 SF

Exterior: 108 - 120 SF

Total: 905 - 917 SF

LEVEL 2-6



oakstonevictoria.com

Dimensions, sizes, specifications, layouts and materials are approximate only and subject to change without notice. E.&O.E.

 **ABSTRACT**

OAK & STONE

BY ABSTRACT



F3
LEVEL 1

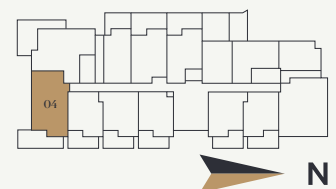
2 Bed + 2 Bath

Interior: 814 SF

Exterior: ~~227 SF~~ 247 SF

Total: ~~1041 SF~~ 1061 SF

LEVEL 1



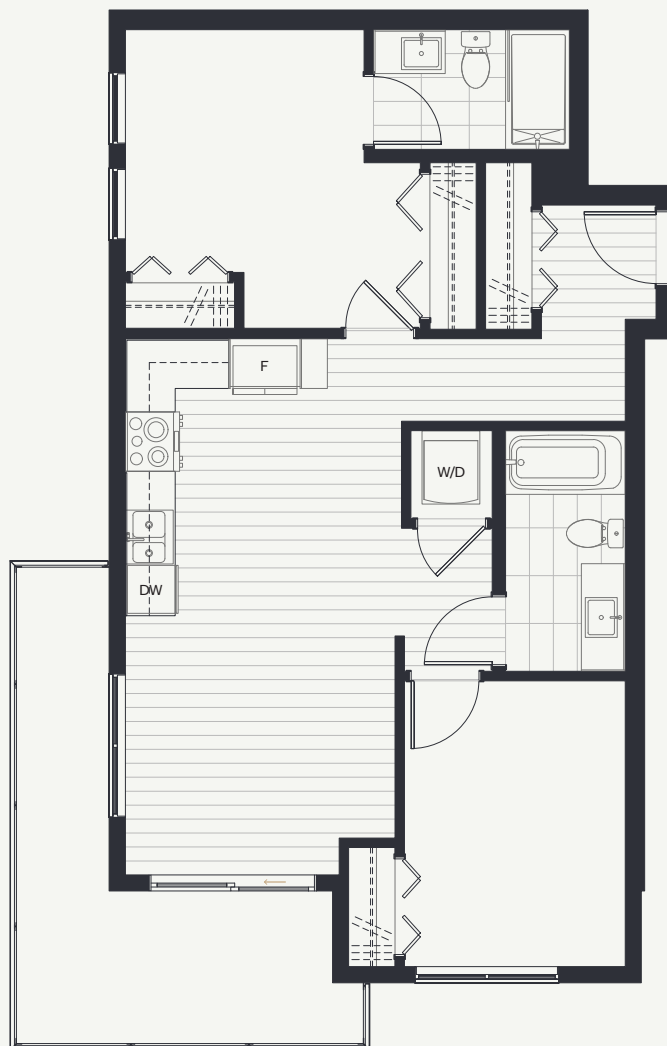
oakstonevictoria.com

Dimensions, sizes, specifications, layouts and materials are approximate only and subject to change without notice. E.&O.E.

 **ABSTRACT**

OAK & STONE

BY ABSTRACT



F3
LEVEL 2-6

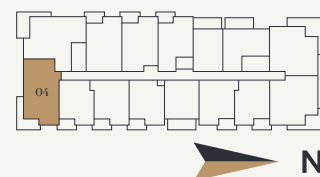
2 Bed + 2 Bath

Interior: 814 SF

Exterior: 129 - ~~247~~ SF

Total: 943 - ~~1061~~ SF

LEVEL 2-6



oakstonevictoria.com

Dimensions, sizes, specifications, layouts and materials are approximate only and subject to change without notice. E.&O.E.



ABSTRACT

OAK & STONE

BY ABSTRACT



F4
LEVEL 1

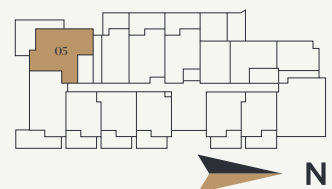
2 Bed + 2 Bath

Interior: 902 SF

Exterior: 321 SF

Total: 1,223 SF

LEVEL 1



oakstonevictoria.com

Dimensions, sizes, specifications, layouts and materials are approximate only and subject to change without notice. E.&O.E.

 **ABSTRACT**

OAK & STONE

BY ABSTRACT



F4
LEVEL 2-6

2 Bed + 2 Bath

Interior: 902 SF

Exterior: 142 - ~~324~~ SF

Total: 1,044 - ~~1,226~~ SF

LEVEL 2-6



oakstonevictoria.com

Dimensions, sizes, specifications, layouts and materials are approximate only and subject to change without notice. E.&O.E.



ABSTRACT