

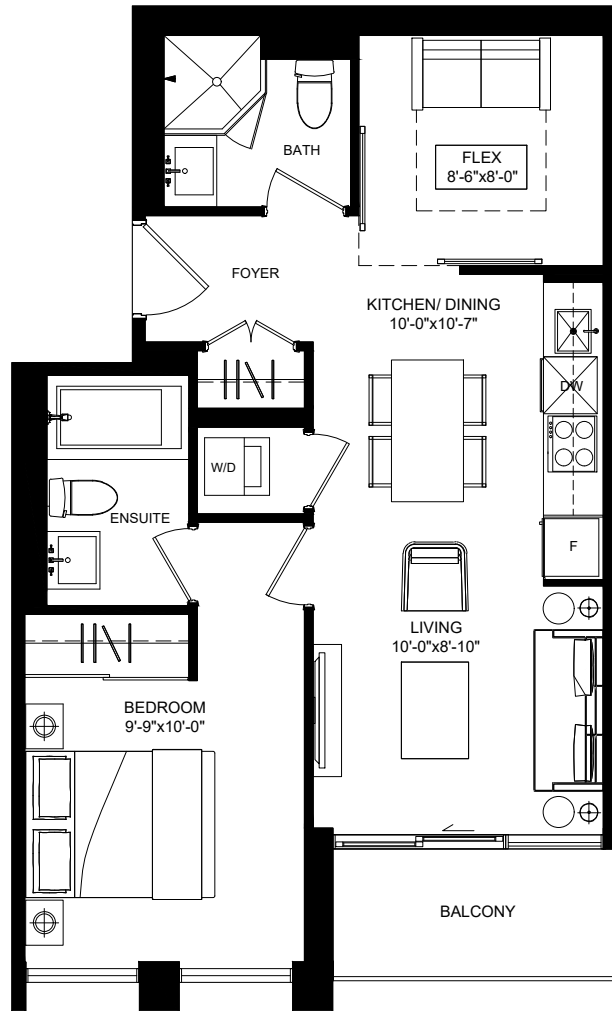
THE
FREDERICK
| CONDOMINIUMS |

THE
GLADSTONE

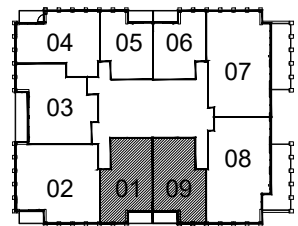
1 BEDROOM + FLEX

Interior: 614 sq.ft.

Exterior: 44 sq.ft.



NORTH
KEY PLAN TYPICAL
FLOORS 27-PH

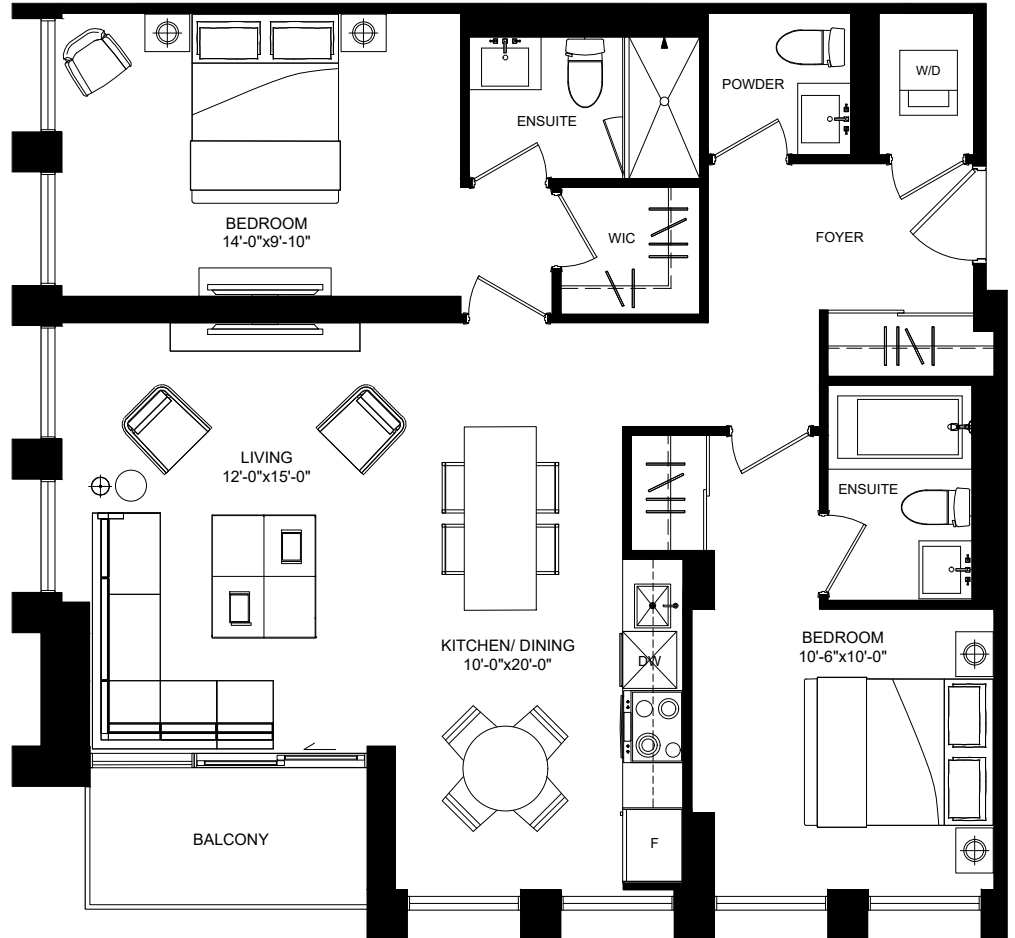


Dimensions, specifications, layouts (including but not limited to tile patterns), window sizes, mullions, fixture representation, appliance and fixture locations, and materials are approximate only, may vary, and are subject to changes without notice as provided in the Agreement of Purchase and Sale. Plans may be reversed. Wall thickness will vary with floor levels reducing room dimensions accordingly. Actual usable floor space may vary from the stated floor area. Measurements of rooms set forth on any floor plan are generally taken at the greatest points of each given room and centre line of windows (as if the room were perfectly rectangular). Furniture is not included. Furniture shown on terrace spaces should be secured for safety. Prices are subject to change without notice. E. & O.E. Plans are not to scale. For more information on the method used for calculating floor area of any unit, reference should be made to Builder Bulletin NO. 22 published by Tarion.

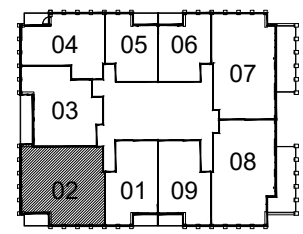
THE
FREDERICK
 | CONDOMINIUMS |

THE
ASTAIRE

2 BEDROOM
 Interior: 997 sq.ft.
 Exterior: 46 sq.ft.



NORTH
 KEY PLAN TYPICAL
 FLOORS 27-PH

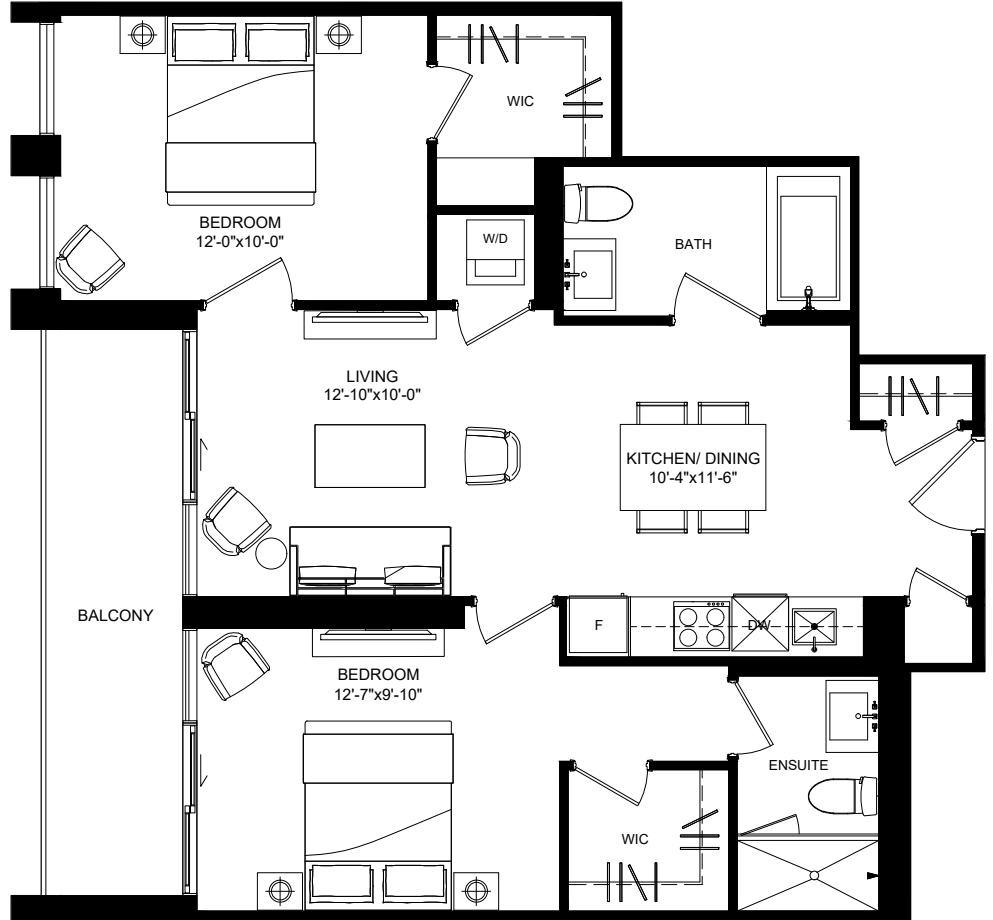


Dimensions, specifications, layouts (including but not limited to tile patterns), window sizes, mullions, fixture representation, appliance and fixture locations, and materials are approximate only, may vary, and are subject to changes without notice as provided in the Agreement of Purchase and Sale. Plans may be reversed. Wall thickness will vary with floor levels reducing room dimensions accordingly. Actual usable floor space may vary from the stated floor area. Measurements of rooms set forth on any floor plan are generally taken at the greatest points of each given room and centre line of windows (as if the room were perfectly rectangular). Furniture is not included. Furniture shown on terrace spaces should be secured for safety. Prices are subject to change without notice. E. & O.E. Plans are not to scale. For more information on the method used for calculating floor area of any unit, reference should be made to Builder Bulletin NO. 22 published by Tarion.

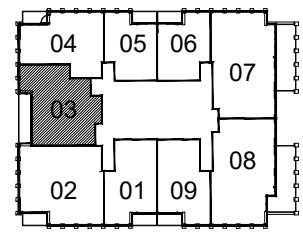
THE
FREDERICK
 | CONDOMINIUMS |

THE
PERRY

2 BEDROOM
 Interior: 825 sq.ft.
 Exterior: 94 sq.ft.



NORTH
 KEY PLAN TYPICAL
 FLOORS 27-PH

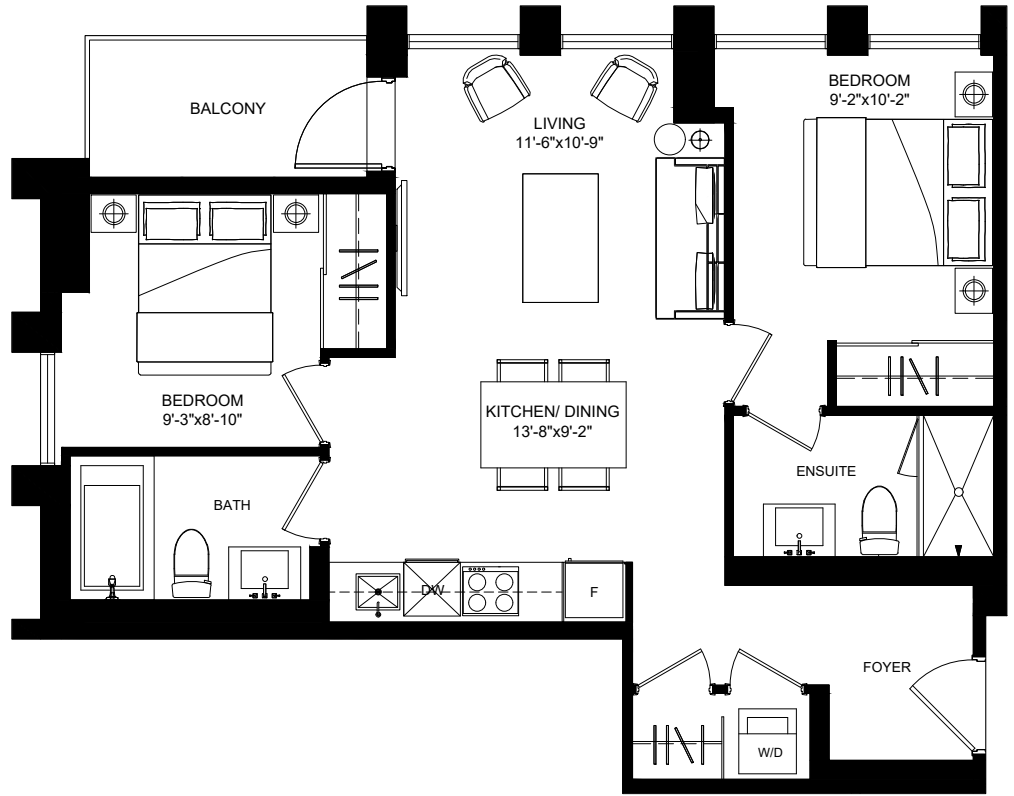


Dimensions, specifications, layouts (including but not limited to tile patterns), window sizes, mullions, fixture representation, appliance and fixture locations, and materials are approximate only, may vary, and are subject to changes without notice as provided in the Agreement of Purchase and Sale. Plans may be reversed. Wall thickness will vary with floor levels reducing room dimensions accordingly. Actual usable floor space may vary from the stated floor area. Measurements of rooms set forth on any floor plan are generally taken at the greatest points of each given room and centre line of windows (as if the room were perfectly rectangular). Furniture is not included. Furniture shown on terrace spaces should be secured for safety. Prices are subject to change without notice. E. & O.E. Plans are not to scale. For more information on the method used for calculating floor area of any unit, reference should be made to Builder Bulletin NO. 22 published by Tarion.

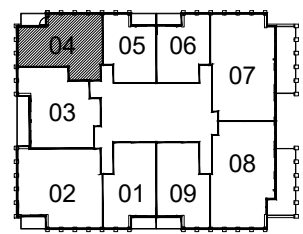
THE
FREDERICK
 | CONDOMINIUMS |

THE
MERCURY

2 BEDROOM
 Interior: 715 sq.ft.
 Exterior: 46 sq.ft.



NORTH
 KEY PLAN TYPICAL
 FLOORS 27-PH

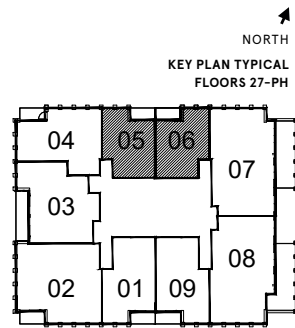
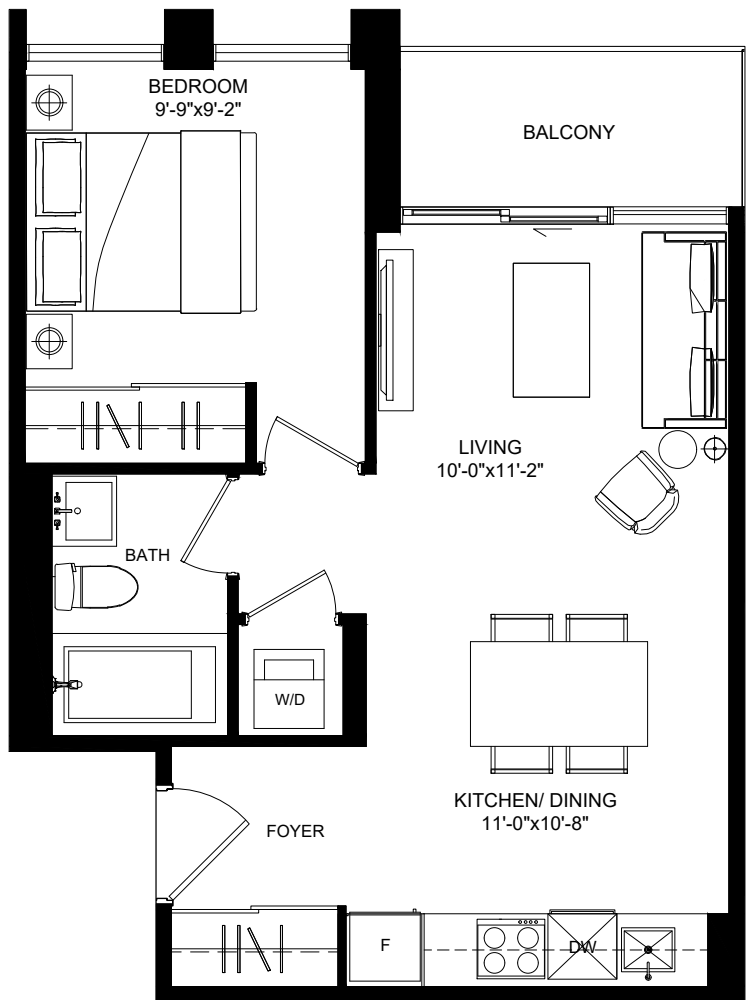


Dimensions, specifications, layouts (including but not limited to tile patterns), window sizes, mullions, fixture representation, appliance and fixture locations, and materials are approximate only, may vary, and are subject to changes without notice as provided in the Agreement of Purchase and Sale. Plans may be reversed. Wall thickness will vary with floor levels reducing room dimensions accordingly. Actual usable floor space may vary from the stated floor area. Measurements of rooms set forth on any floor plan are generally taken at the greatest points of each given room and centre line of windows (as if the room were perfectly rectangular). Furniture is not included. Furniture shown on terrace spaces should be secured for safety. Prices are subject to change without notice. E. & O.E. Plans are not to scale. For more information on the method used for calculating floor area of any unit, reference should be made to Builder Bulletin NO. 22 published by Tarion.

THE
FREDERICK
 | CONDOMINIUMS |

THE
COUPLES

1 BEDROOM
 Interior: 498 sq.ft.
 Exterior: 44 sq.ft.



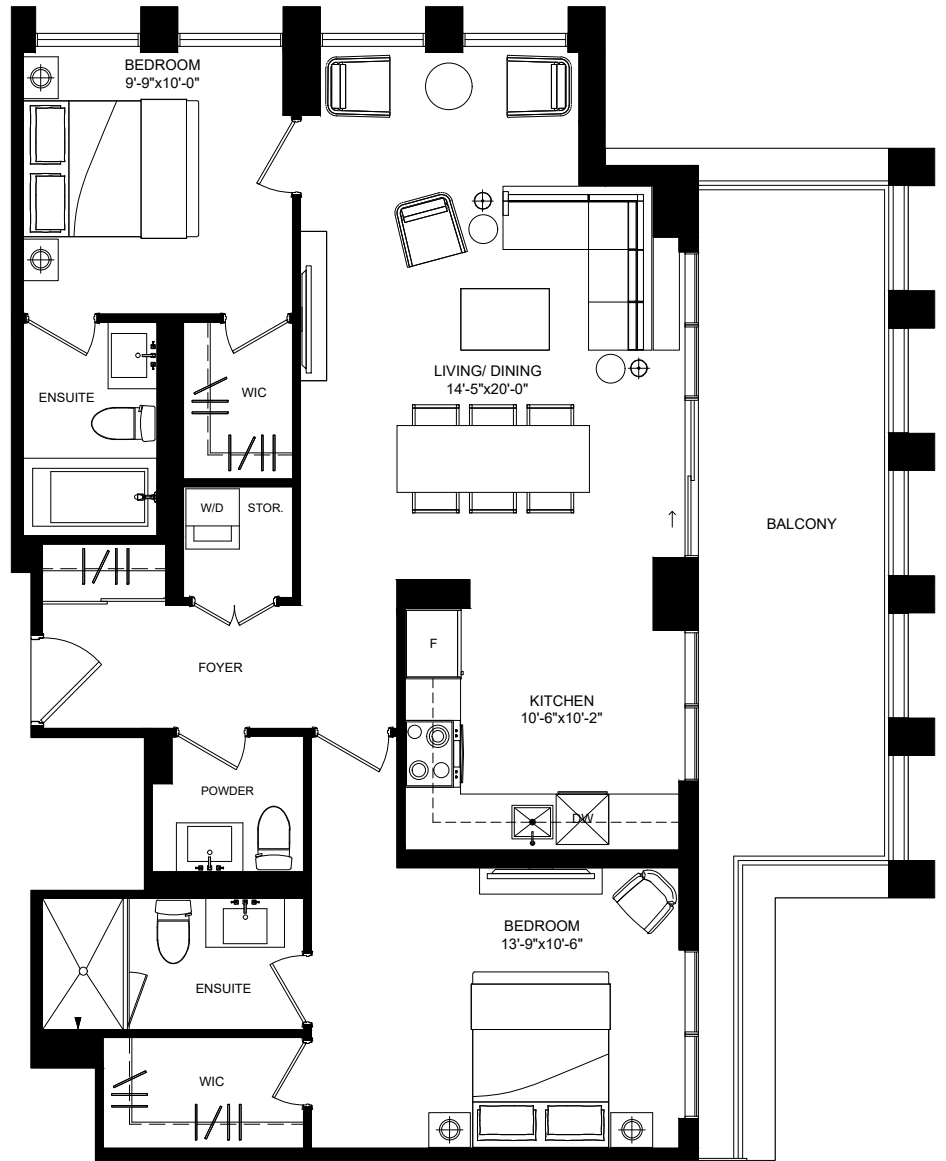
Dimensions, specifications, layouts (including but not limited to tile patterns), window sizes, mullions, fixture representation, appliance and fixture locations, and materials are approximate only, may vary, and are subject to changes without notice as provided in the Agreement of Purchase and Sale. Plans may be reversed. Wall thickness will vary with floor levels reducing room dimensions accordingly. Actual usable floor space may vary from the stated floor area. Measurements of rooms set forth on any floor plan are generally taken at the greatest points of each given room and centre line of windows (as if the room were perfectly rectangular). Furniture is not included. Furniture shown on terrace spaces should be secured for safety. Prices are subject to change without notice. E. & O.E. Plans are not to scale. For more information on the method used for calculating floor area of any unit, reference should be made to Builder Bulletin NO. 22 published by Tarion.



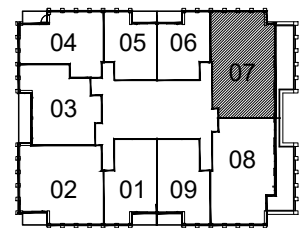
THE
FREDERICK
| CONDOMINIUMS |

THE
AVERY

2 BEDROOM
Interior: 1,017 sq.ft.
Exterior: 200 sq.ft.



NORTH
KEY PLAN TYPICAL
FLOORS 27-PH

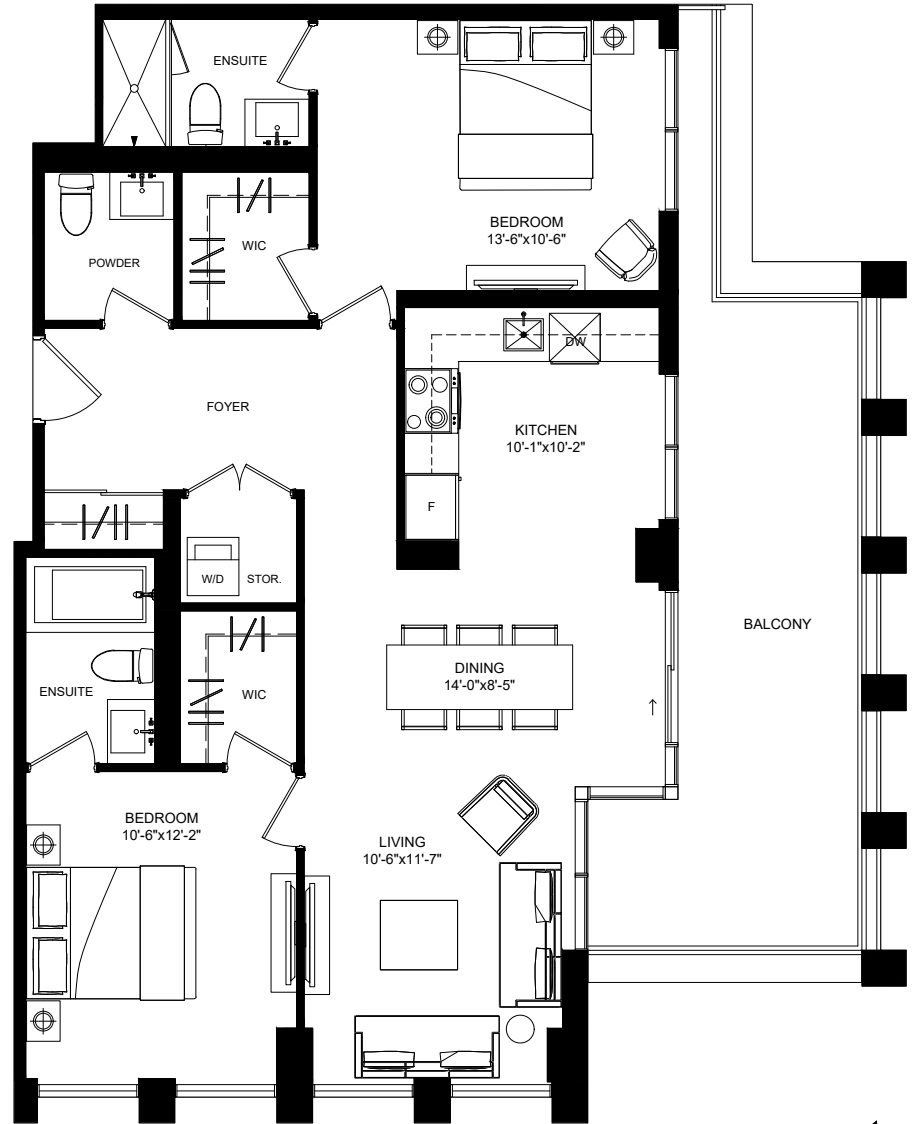


Dimensions, specifications, layouts (including but not limited to tile patterns), window sizes, mullions, fixture representation, appliance and fixture locations, and materials are approximate only, may vary, and are subject to changes without notice as provided in the Agreement of Purchase and Sale. Plans may be reversed. Wall thickness will vary with floor levels reducing room dimensions accordingly. Actual usable floor space may vary from the stated floor area. Measurements of rooms set forth on any floor plan are generally taken at the greatest points of each given room and centre line of windows (as if the room were perfectly rectangular). Furniture is not included. Furniture shown on terrace spaces should be secured for safety. Prices are subject to change without notice. E. & O.E. Plans are not to scale. For more information on the method used for calculating floor area of any unit, reference should be made to Builder Bulletin NO. 22 published by Tarion.

THE
FREDERICK
 | CONDOMINIUMS |

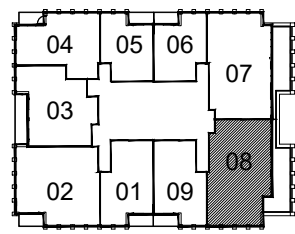
THE
STANLEY

2 BEDROOM
 Interior: 1,019 sq.ft.
 Exterior: 220 sq.ft.



NORTH

KEY PLAN TYPICAL
 FLOORS 27-PH



Dimensions, specifications, layouts (including but not limited to tile patterns), window sizes, mullions, fixture representation, appliance and fixture locations, and materials are approximate only, may vary, and are subject to changes without notice as provided in the Agreement of Purchase and Sale. Plans may be reversed. Wall thickness will vary with floor levels reducing room dimensions accordingly. Actual usable floor space may vary from the stated floor area. Measurements of rooms set forth on any floor plan are generally taken at the greatest points of each given room and centre line of windows (as if the room were perfectly rectangular). Furniture is not included. Furniture shown on terrace spaces should be secured for safety. Prices are subject to change without notice. E. & O.E. Plans are not to scale. For more information on the method used for calculating floor area of any unit, reference should be made to Builder Bulletin NO. 22 published by Tarion.