

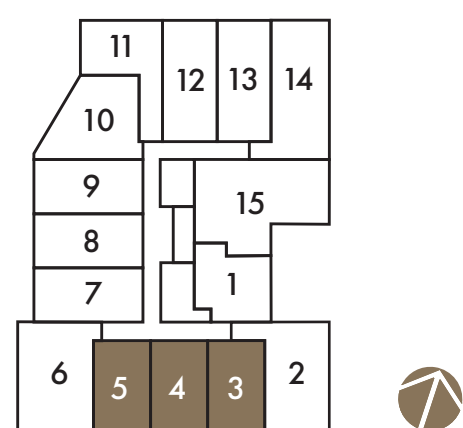


The Berlin

1 BEDROOM / 1 BATH

INDOOR LIVING 549 SQFT.
OUTDOOR LIVING 51-77 SQFT.

FLOOR PLATES



2nd - 6th Floor

ADVANCED ENERGY-EFFICIENT SMART SYSTEM THERMOSTAT

MECH.

W/D

F

DESIGNER-SELECTED LUXURY VINYL PLANK FLOORING

DW

LIVING/DINING /KITCHEN
17'3" x 13'2"

SLIDING DOOR

BALCONY
16'8" x 4'7"

CULINARY EXPERIENCE

UNDER CABINET LED VALANCE LIGHTING

DESIGNER- SELECTED QUARTZ COUNTERTOP & TILED BACKSPLASH

BUILT-IN APPLIANCE PACKAGE

SOFT CLOSE HINGES & DRAWERS

DESIGNER- SELECTED CONTEMPORARY KITCHEN CABINETRY & HARDWARE

DESIGNER- SELECTED PORCELAIN FLOORING

CUSTOM VANITY & MEDICINE CABINET

LUXURY BATHROOMS

BATH

PRIMARY BEDROOM
11'0" x 9'6"

FROSTED GLASS SLIDING DOOR

SLIDING GLASS DOORS

LIGHT FLOODED FLOOR TO CEILING WINDOWS

SPACIOUS OUTDOOR LIVING SPACE

All plans, dimensions and specifications are subject to change without notice. Actual usable floor space may vary from stated floor area. Column locations, window locations and size may vary and are subject to change without notice. Renderings are artist concept and will change if required by site conditions. Plans, specifications and materials are subject to availability, substitution, modification without notice at the sole discretion of Isroc International Inc. E. & O.E.

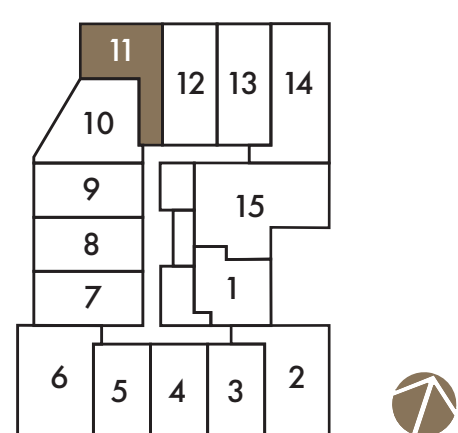


The Paris

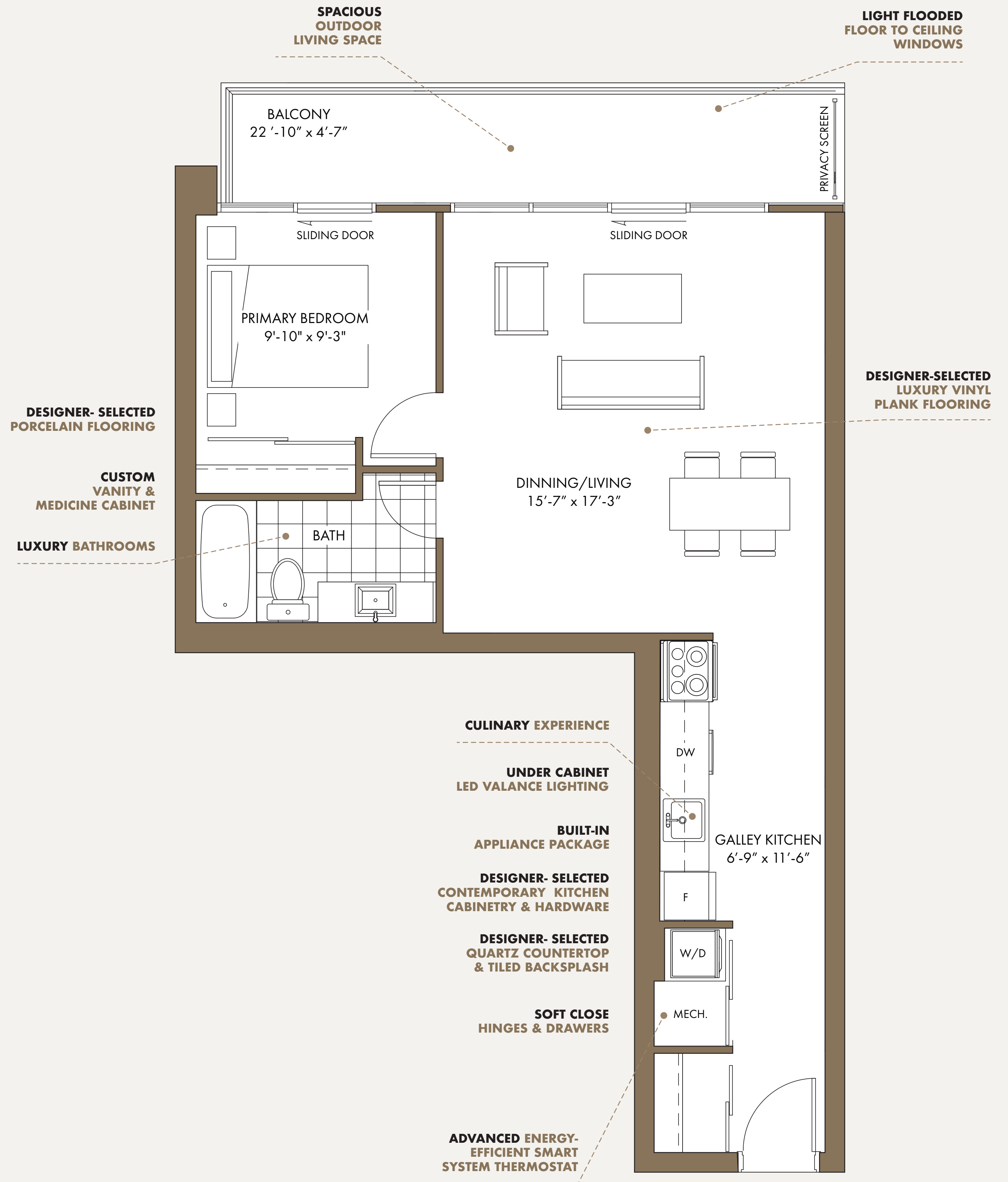
1 BEDROOM / 1 BATH

INDOOR LIVING 663 SQFT.
OUTDOOR LIVING 114 SQFT.

FLOOR PLATES



2nd - 6th Floor

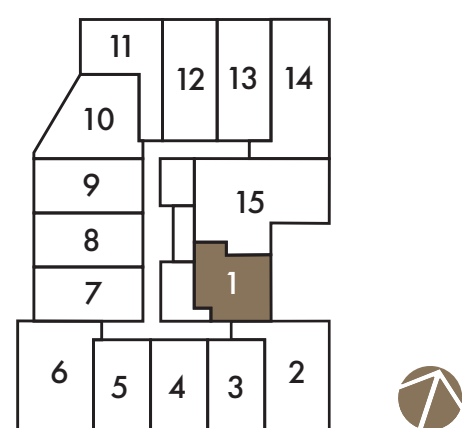


The Oslo

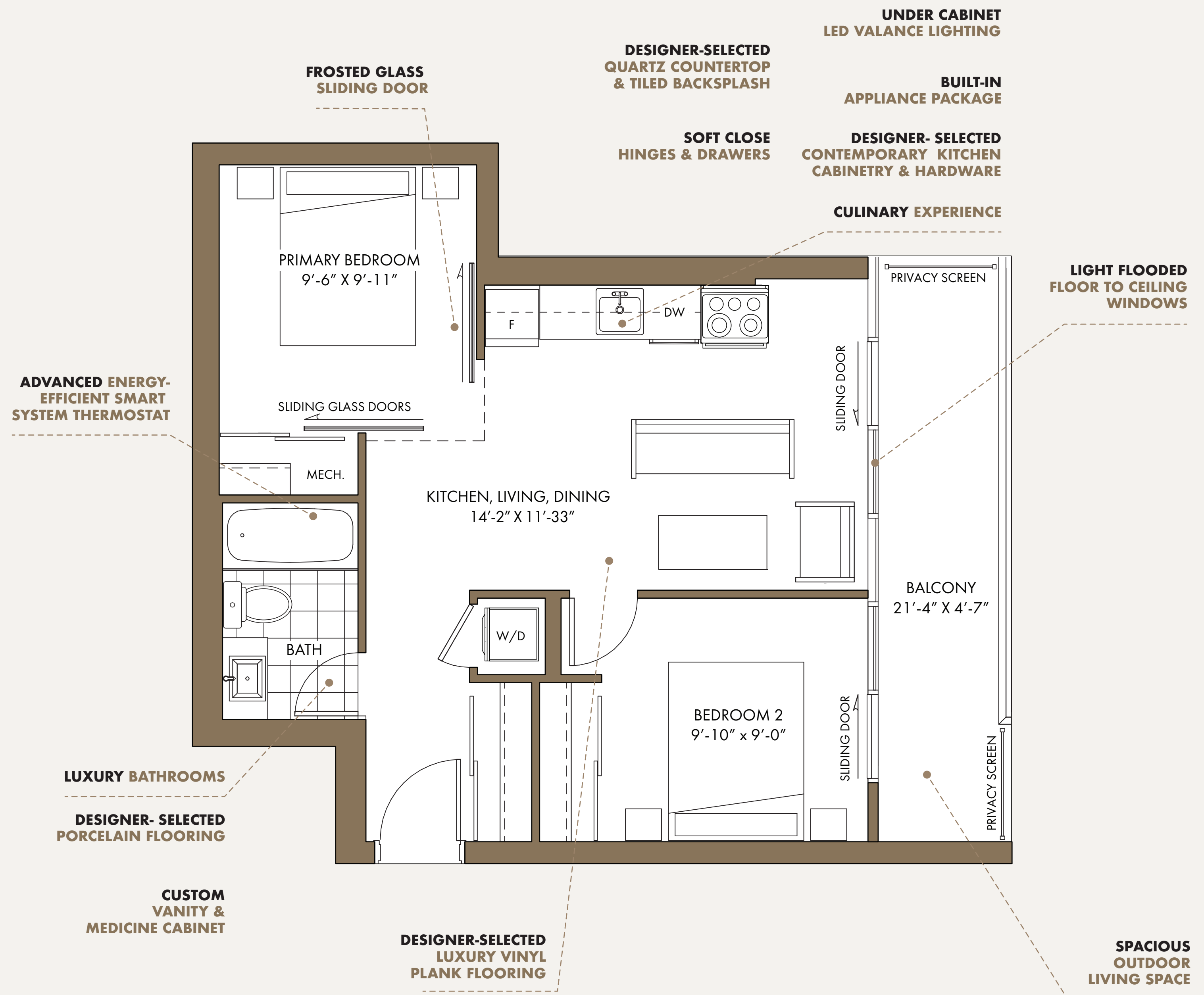
2 BEDROOM / 1 BATH

INDOOR LIVING 567 SQFT.
OUTDOOR LIVING 99-200 SQFT.

FLOOR PLATES



2nd - 6th Floor



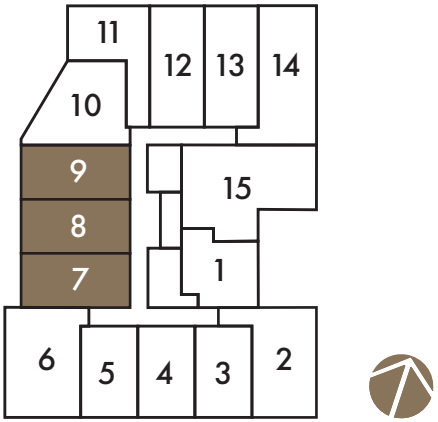


The Athens

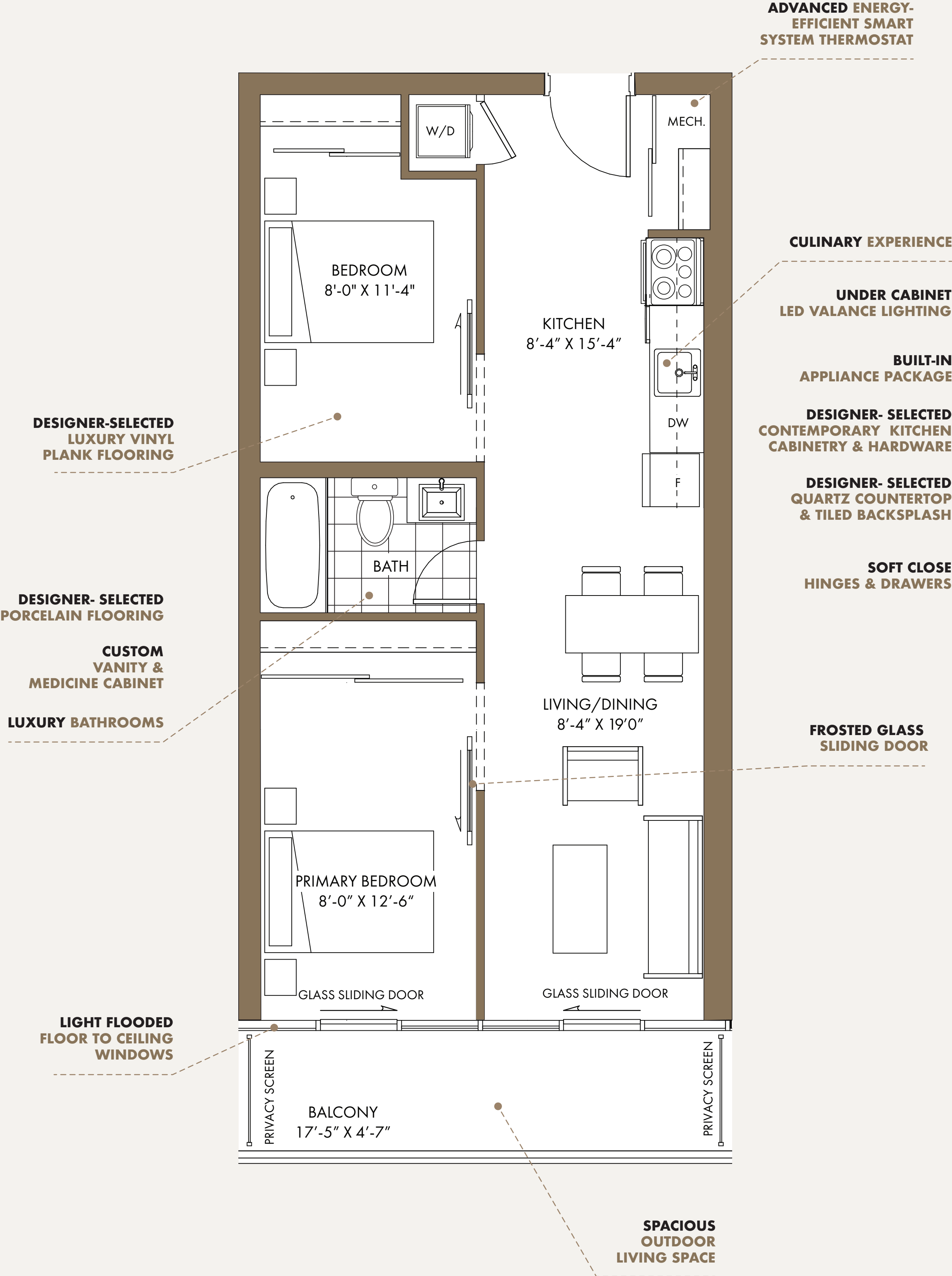
2 BEDROOM / 1 BATH

INDOOR LIVING 630 SQFT.
OUTDOOR LIVING 0-81 SQFT.

FLOOR PLATES



2nd - 6th Floor



All plans, dimensions and specifications are subject to change without notice. Actual usable floor space may vary from stated floor area. Column locations, window locations and size may vary and are subject to change without notice. Renderings are artist concept and will change if required by site conditions. Plans, specifications and materials are subject to availability, substitution, modification without notice at the sole discretion of Isroc International Inc. E. & O.E.

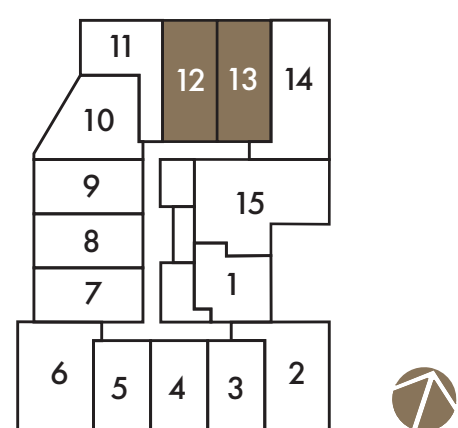


The Turin

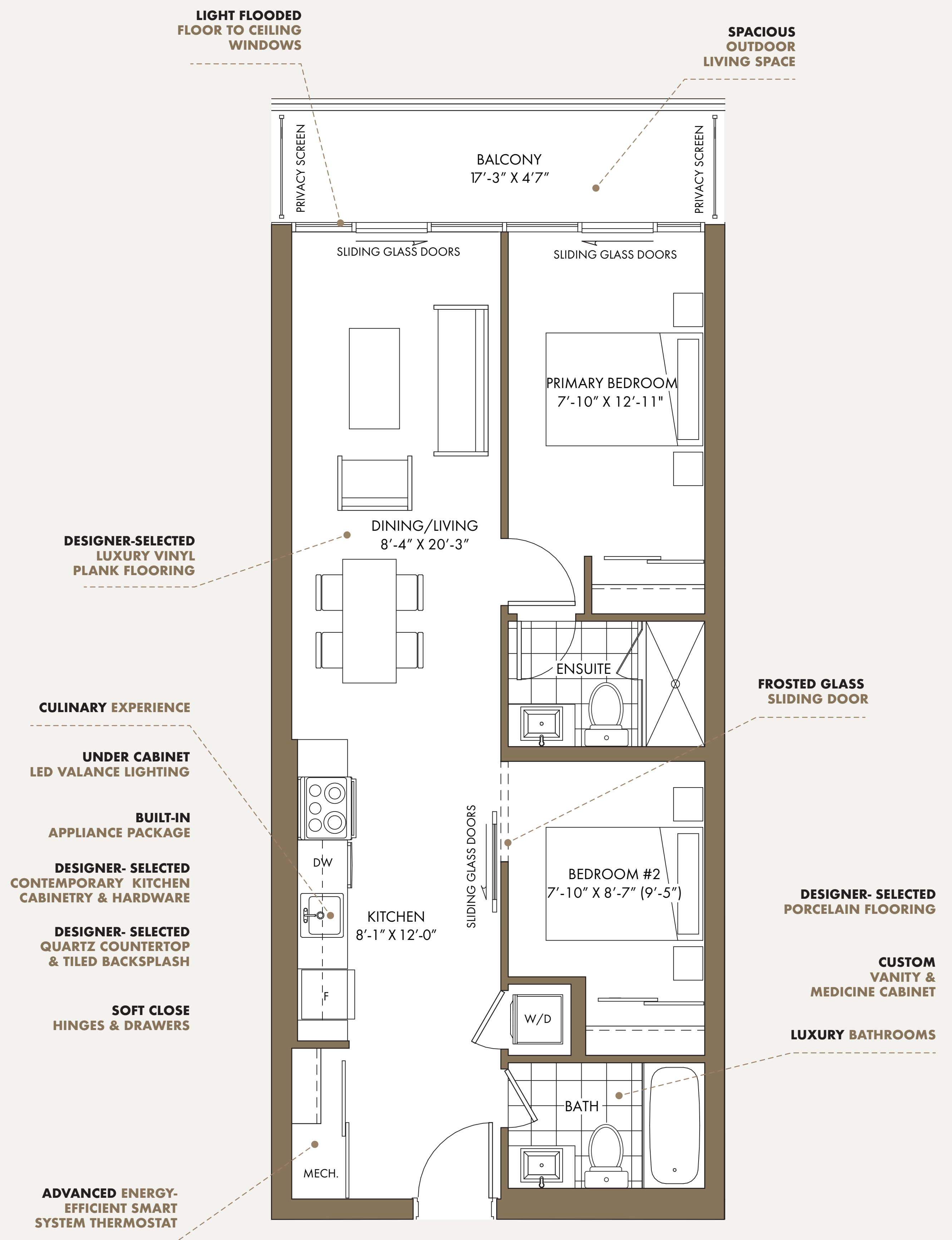
2 BEDROOM / 2 BATH

INDOOR LIVING 693 SQFT.
OUTDOOR LIVING 80 SQFT.

FLOOR PLATES



2nd - 6th Floor



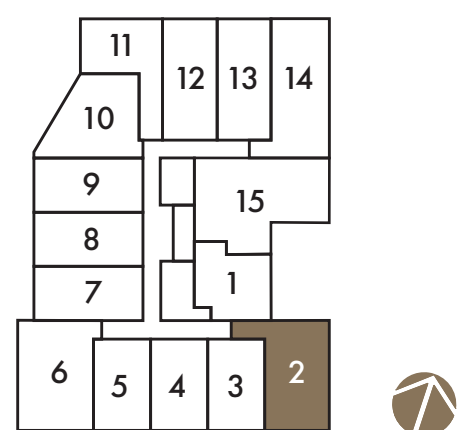


The Vienna

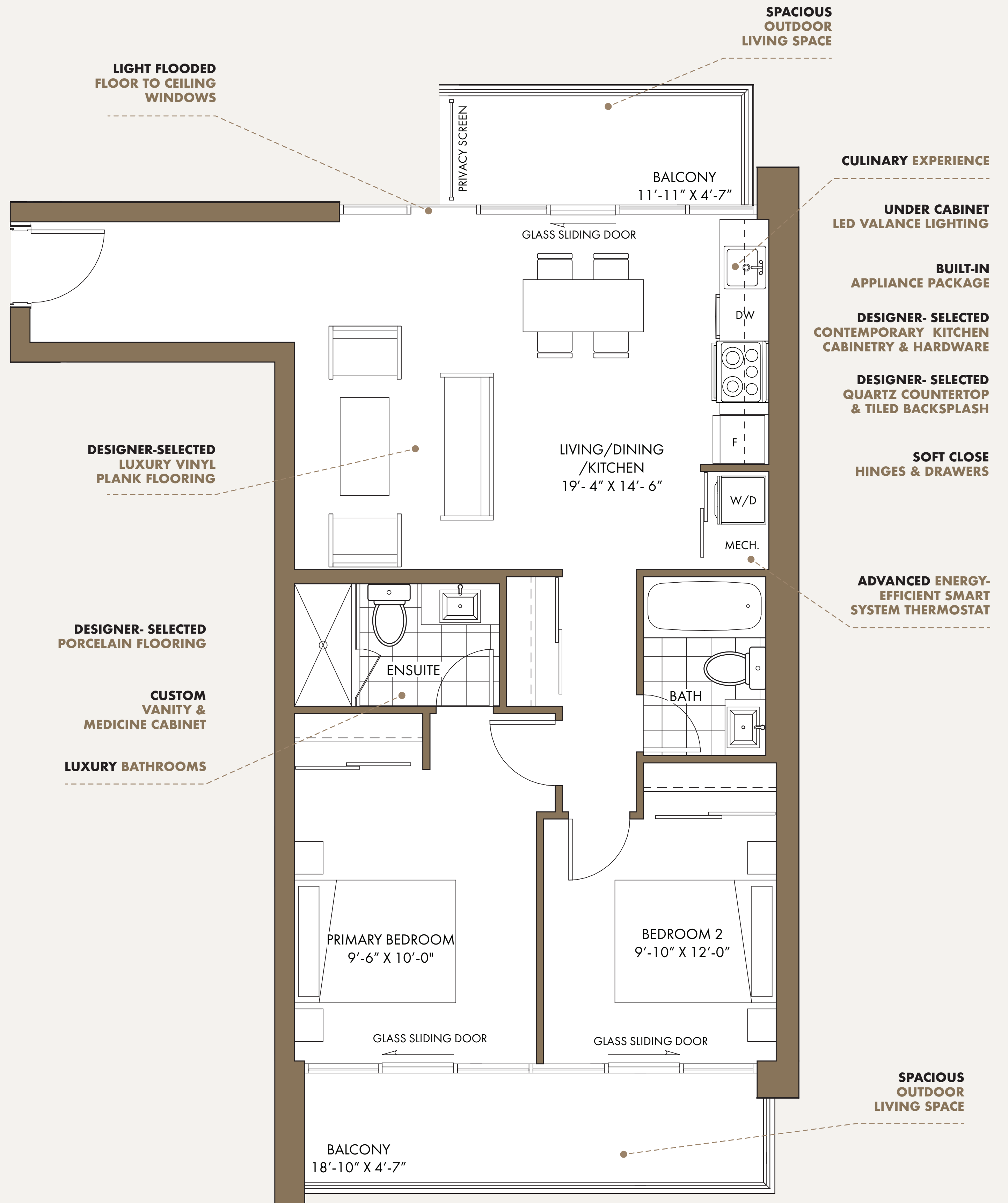
2 BEDROOM / 2 BATH

INDOOR LIVING 819 SQFT.
OUTDOOR LIVING 105-195 SQFT.

FLOOR PLATES



2nd - 6th Floor



All plans, dimensions and specifications are subject to change without notice. Actual usable floor space may vary from stated floor area. Column locations, window locations and size may vary and are subject to change without notice. Renderings are artist concept and will change if required by site conditions. Plans, specifications and materials are subject to availability, substitution, modification without notice at the sole discretion of Isroc International Inc. E. & O.E.

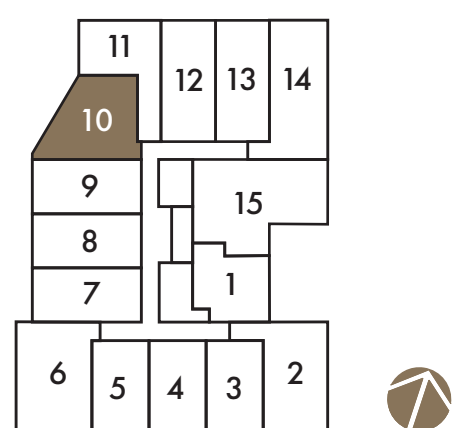


The Lisbon

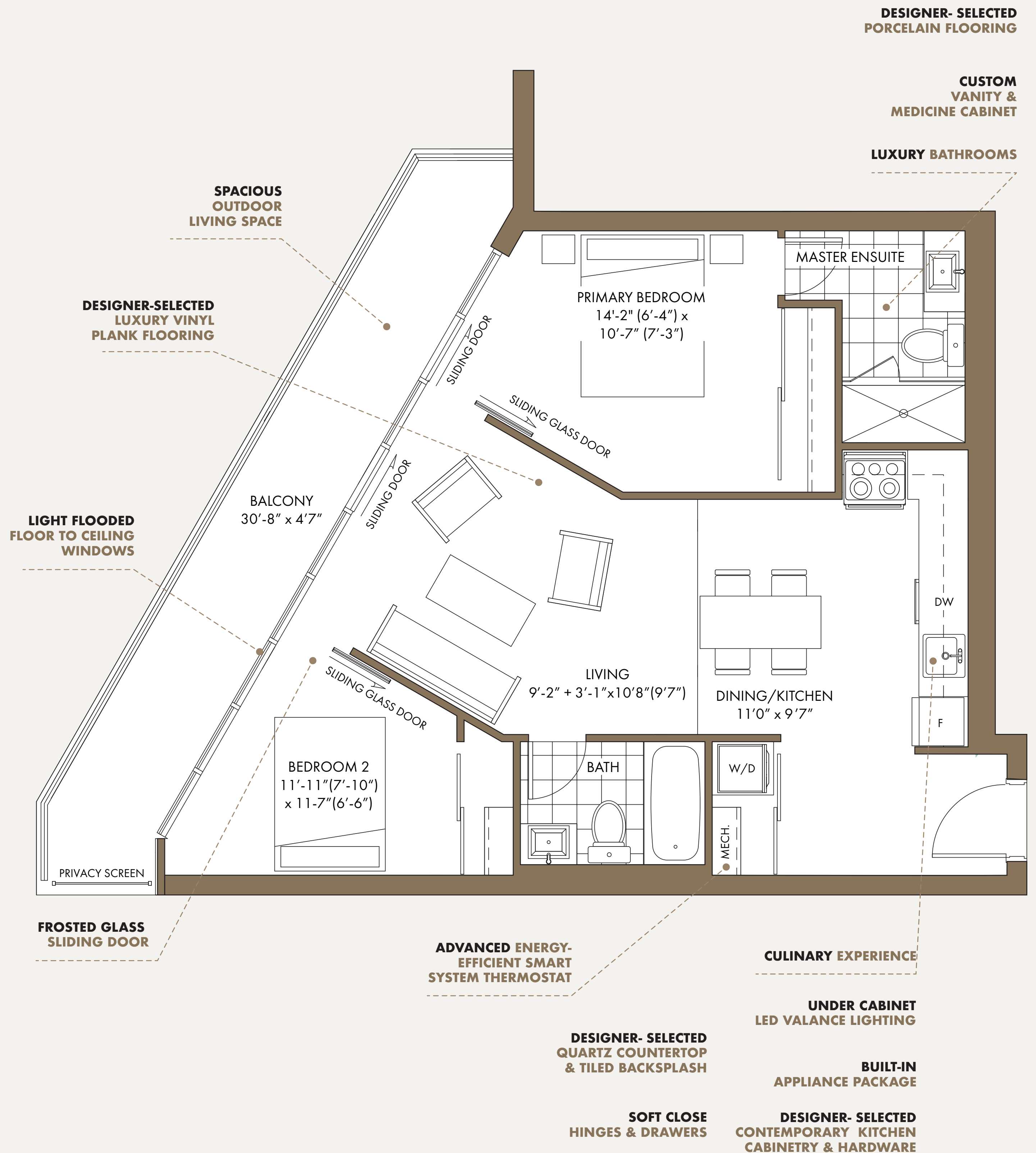
2 BEDROOM / 2 BATH

INDOOR LIVING 750 SQFT.
OUTDOOR LIVING 69-156 SQFT.

FLOOR PLATES



2nd - 6th Floor



All plans, dimensions and specifications are subject to change without notice. Actual usable floor space may vary from stated floor area. Column locations, window locations and size may vary and are subject to change without notice. Renderings are artist concept and will change if required by site conditions. Plans, specifications and materials are subject to availability, substitution, modification without notice at the sole discretion of Isroc International Inc. E. & O.E.

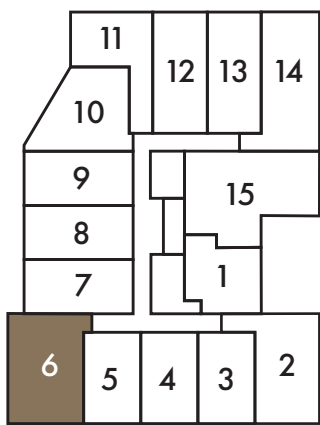


The Stockholm

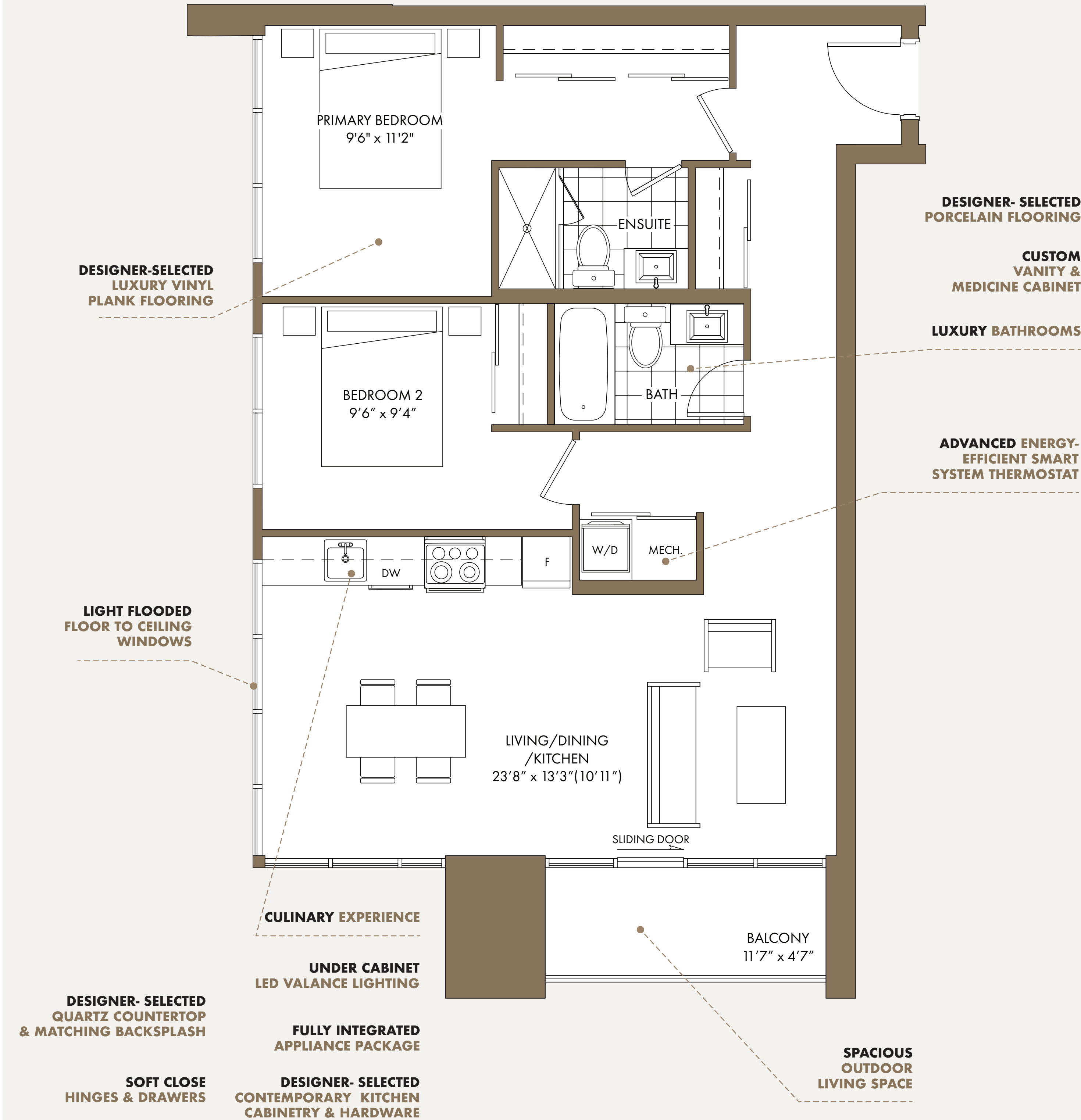
2 BEDROOM / 2 BATH

INDOOR LIVING 891 SQFT.
OUTDOOR LIVING 49 - 63 SQFT.

FLOOR PLATES



2nd - 6th Floor



All plans, dimensions and specifications are subject to change without notice. Actual usable floor space may vary from stated floor area. Column locations, window locations and size may vary and are subject to change without notice. Renderings are artist concept and will change if required by site conditions. Plans, specifications and materials are subject to availability, substitution, modification without notice at the sole discretion of Isroc International Inc. E. & O.E.

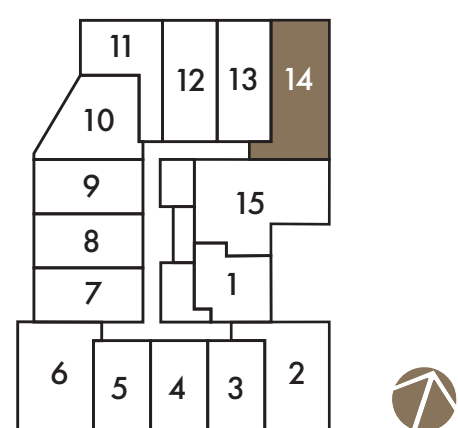


The Glasgow

3 BEDROOM / 2 BATH

INDOOR LIVING 912 SQFT.
OUTDOOR LIVING 78 SQFT.

FLOOR PLATES



2nd - 6th Floor

**DESIGNER-SELECTED
LUXURY VINYL
PLANK FLOORING**

CULINARY EXPERIENCE

**UNDER CABINET
LED VALANCE LIGHTING**

**BUILT-IN
APPLIANCE PACKAGE**

**DESIGNER- SELECTED
CONTEMPORARY KITCHEN
CABINETRY & HARDWARE**

**DESIGNER- SELECTED
QUARTZ COUNTERTOP
& TILED BACKSPLASH**

**SOFT CLOSE
HINGES & DRAWERS**

**ADVANCED ENERGY-
EFFICIENT SMART
SYSTEM THERMOSTAT**

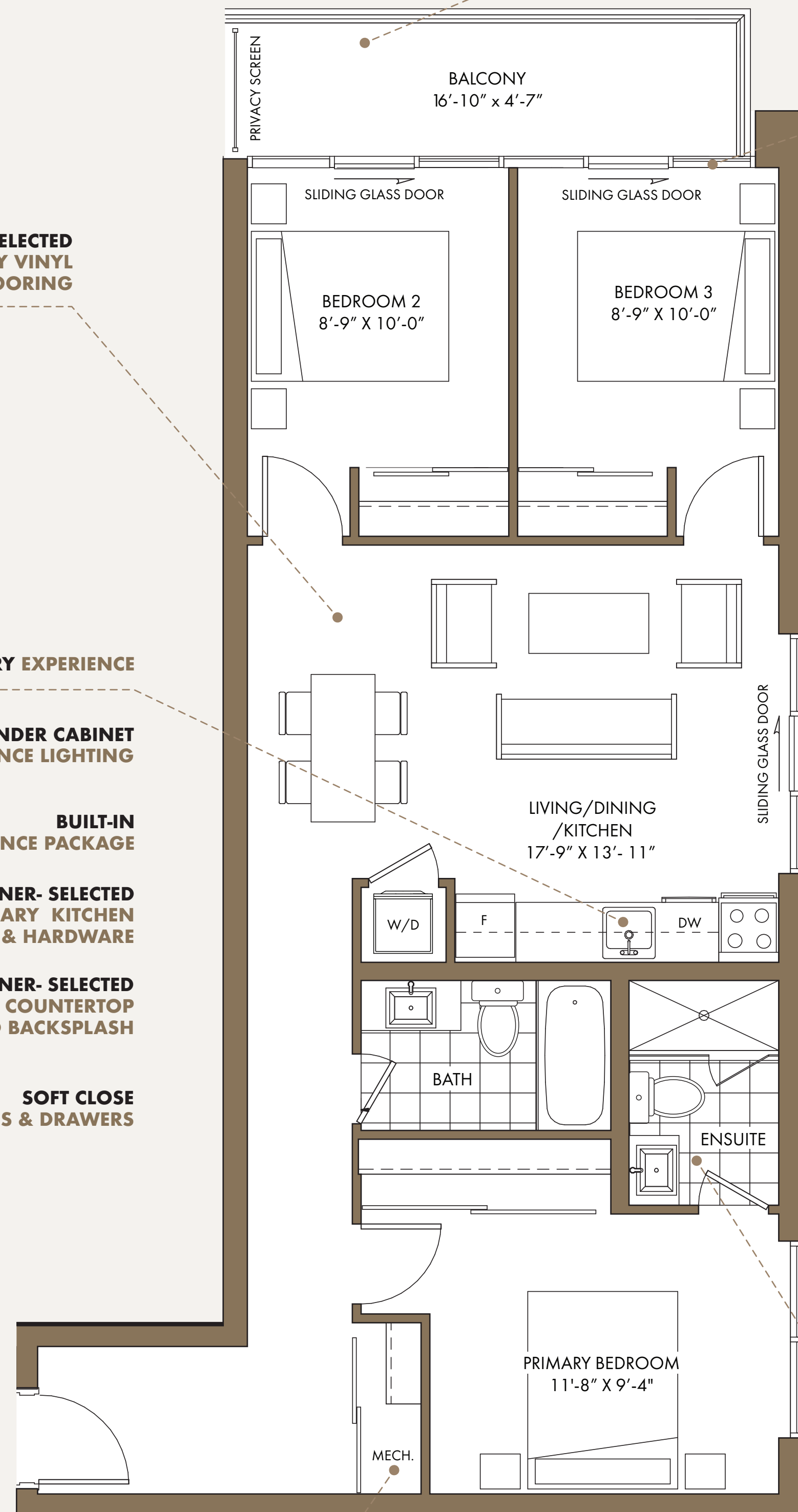
**SPACIOUS
OUTDOOR
LIVING SPACE**

**LIGHT FLOODED
FLOOR TO CEILING
WINDOWS**

**DESIGNER- SELECTED
PORCELAIN FLOORING**

**CUSTOM
VANITY &
MEDICINE CABINET**

LUXURY BATHROOMS



All plans, dimensions and specifications are subject to change without notice. Actual usable floor space may vary from stated floor area. Column locations, window locations and size may vary and are subject to change without notice. Renderings are artist concept and will change if required by site conditions. Plans, specifications and materials are subject to availability, substitution, modification without notice at the sole discretion of Isroc International Inc. E. & O.E.

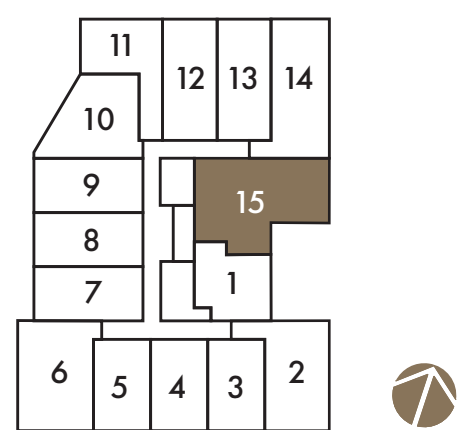


The Valencia

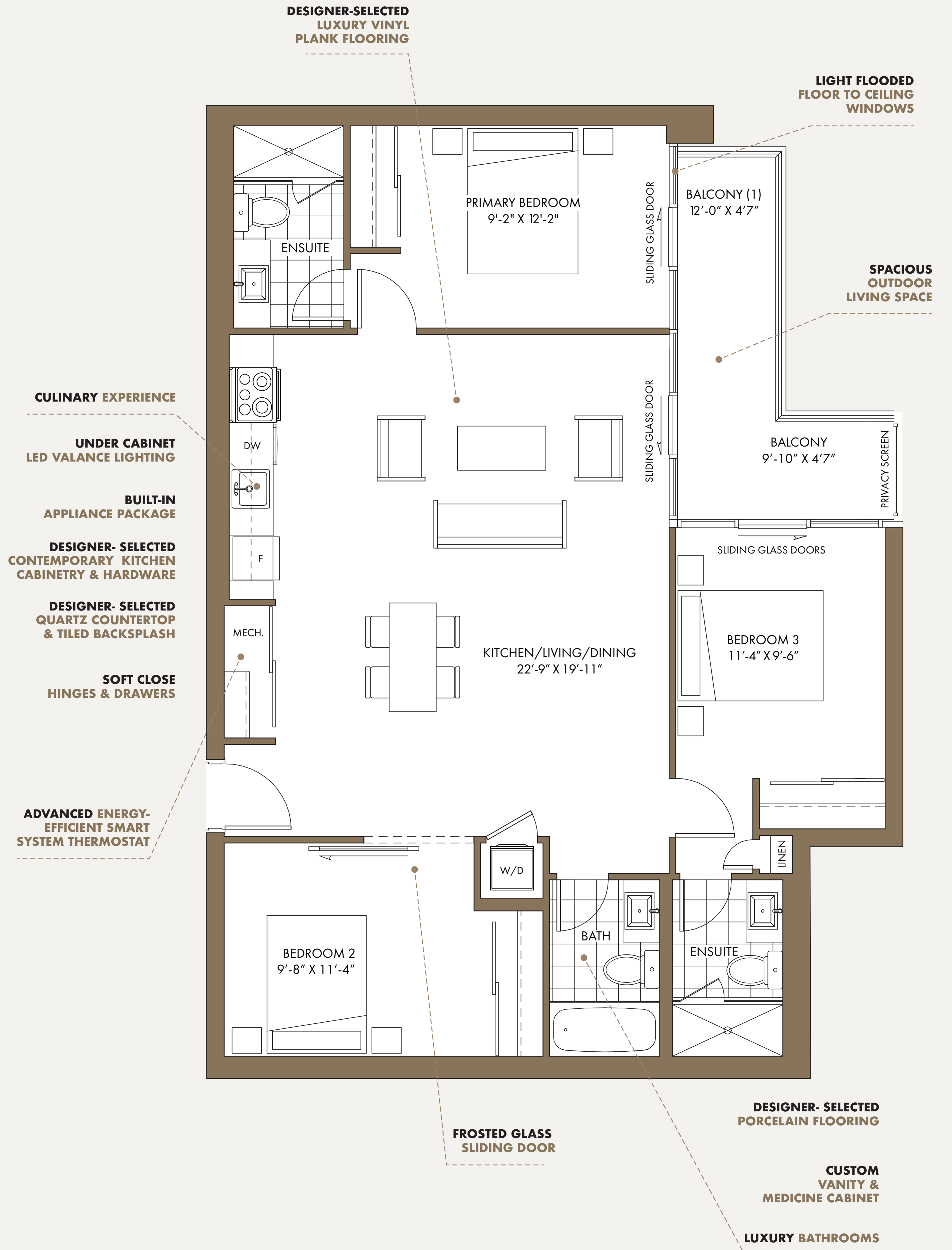
3 BEDROOM / 3 BATH

INDOOR LIVING 1137 SQFT.
OUTDOOR LIVING 102-180 SQFT.

FLOOR PLATES



2nd - 6th Floor



All plans, dimensions and specifications are subject to change without notice. Actual usable floor space may vary from stated floor area. Column locations, window locations and size may vary and are subject to change without notice. Renderings are artist concept and will change if required by site conditions. Plans, specifications and materials are subject to availability, substitution, modification without notice at the sole discretion of Isroc International Inc. E. & O.E.