



Mile & Creek

A COMING
TOGETHER UNLIKE
ANY OTHER.



A COMING
TOGETHER UNLIKE
ANY OTHER.





SET ROOTS



SET FREE



HERE & HOME

HERE

& HOME

HERE

PART CONNECTION & PART CALM.

A place steeped in history & spurring innovation.

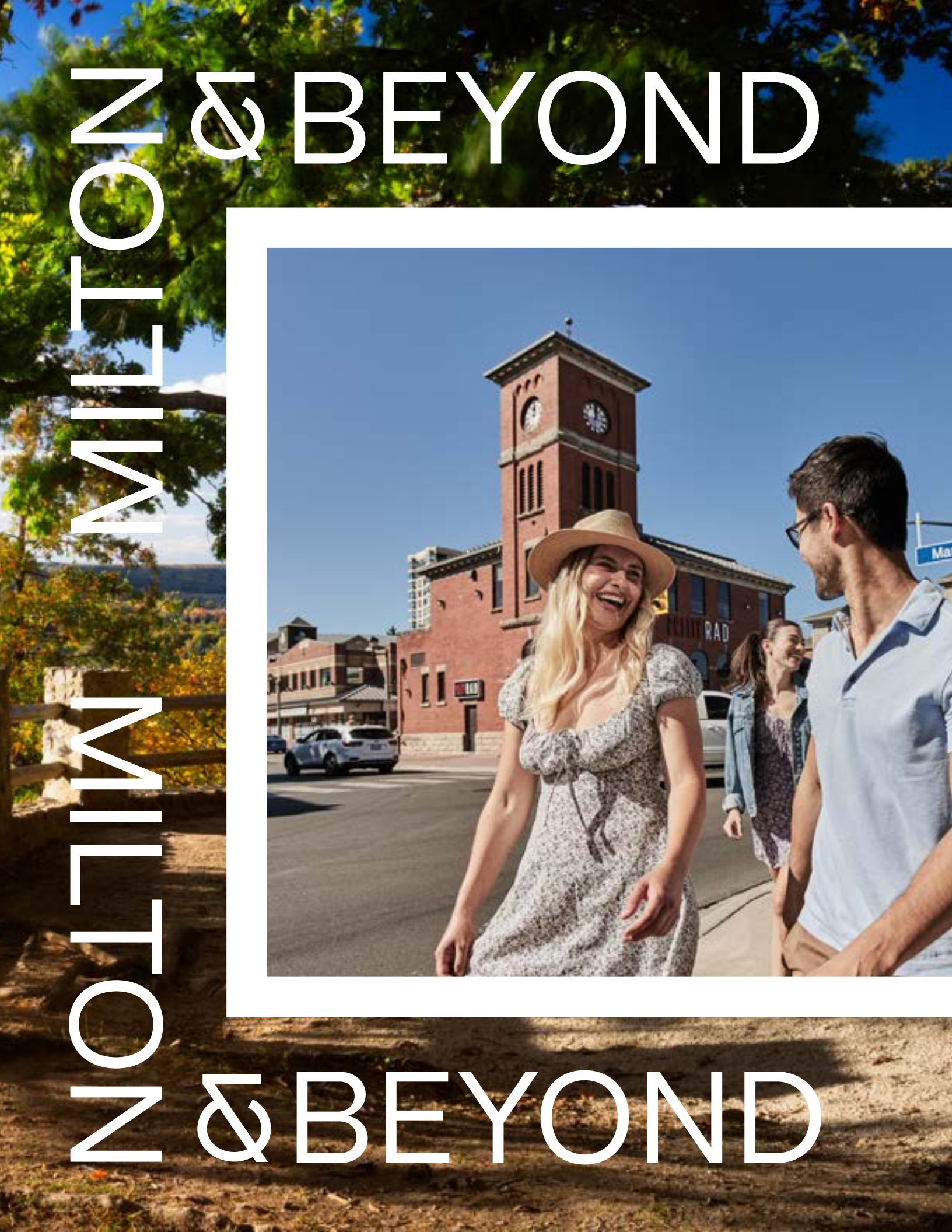
Milton is the land of ands, not “if onlys”.

A community comprised of everything you need & even more than you imagined. Close to amenity & tucked away from congestion. Room to grow & a space to call your own. Set against protected greenspace & set six storeys high above expectation.

With Sixteen Mile Creek rolling through the landscape, with trails and peaks surrounding a dynamic downtown stretch, Mile & Creek is a master planned condo community where what matters most runs course with what makes a place worth calling your own.

**& THAT’S JUST
THE BEGINNING.**





MILTON IS A PLACE UNEQUALED & UNCOMPROMISING.

An area both burgeoning and bespoke, where you can find what you're looking for & find new adventures that elevate your outlook on the everyday. Fifty minutes from Toronto and under a half an hour from Mississauga, Milton places you at the centre of connected living. And, as one of Canada's fastest growing municipalities, Milton is also HQ to one of the nation's fastest growing tech centres. Innovative & within proximity of all you need.

EXPERIENCE & EXPLORE

Urban conveniences & cultural eateries line the main street, with shopping, dining, & entertainment ready for your weekend plans.

Milton is also the ideal terrain for outdoor enthusiasts, connected to a verdant and vibrant mix of some of Canada's most scenic outdoor spaces.

Explore the many trails that weave itself naturally in the Milton landscape, including Bruce Trail, Canada's oldest and longest marked path system. Or take in the breathtaking vantage points that peak throughout Rattlesnake Point.

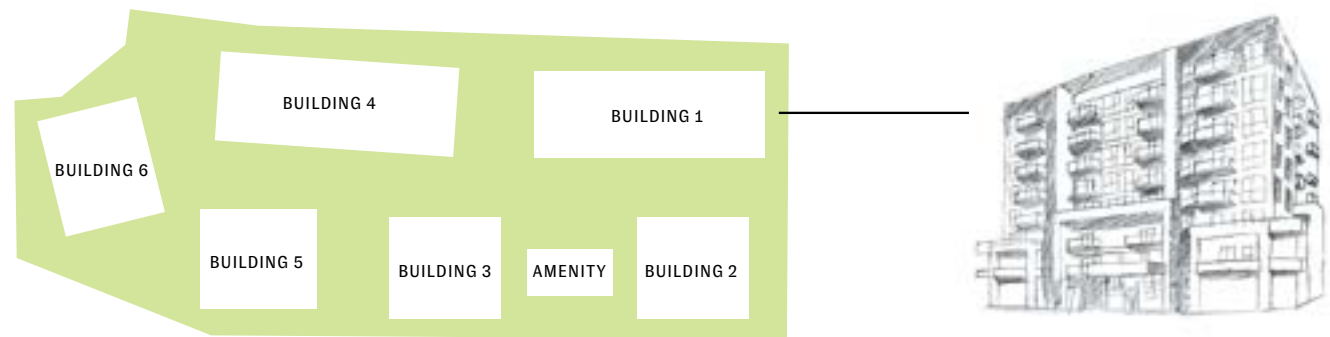
EXPLORE & EXPERIENCE



A six-building master planned condo community, this is your first chance at being part of Mile & Creek. Backing onto protected greenspace & weaved naturally into the broader Milton landscape, see why this community is worth calling home, & then some.

MILTON

ONE OF THE FASTEST GROWING MUNICIPALITIES IN CANADA*.



MILE & CREEK CONDO-COMMUNITY IS CONNECTED BY A SERIES OF VERDANT PATHWAYS & BACKING ONTO PROTECTED GREENSPACE.

250+

PARKS, FACILITIES, POOLS & FIELDS IN THE MILTON AREA.

#6

RANKING ON CANADA'S BEST PLACES TO LIVE**.

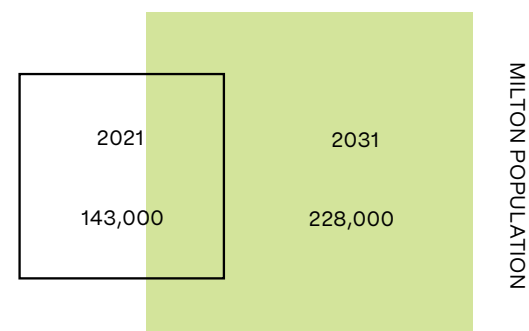
10

MINUTES

→ 401 & 407

→ MILTON 

GROWTH & POPULATION



60%

INCREASE IN
POPULATION
OVER THE NEXT
10 YEARS.***

SOURCES:

*<https://www.procore.com/jobsite/fastest-growing-cities-in-canada-with-the-most-construction-projects-underway/>

<https://www.moneysense.ca/canadas-best-places-to-live-2018-full-ranking/> *City of Milton. (n.d.). Milton Fast Facts. Milton, Ontario explained. Retrieved from https://web.archive.org/web/20160427200813/http://www.miltonthiswayup.ca/pdfs/Milton_Fast_Facts.pdf Tracking development. Economic Development – Town of Milton. (n.d.). Retrieved from <https://www.milton.ca/en/business-and-development/tracking-development.aspx>





CHUDLEIGH'S ENTERTAINMENT FARM



LIVINGSTON PARK



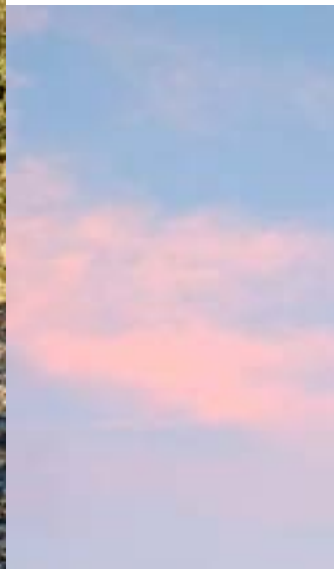
ORANGE SNAIL BREWERS

OUT & ABOUT

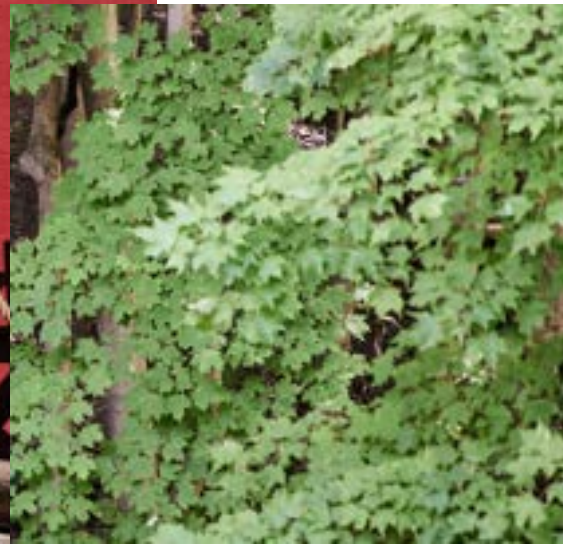
From mornings spent along the Rattlesnake Point trails and afternoons sipping pints at the local brew pub, to evenings making smores and new friends at Chudleigh's Entertainment Farm, Mile & Creek puts you in peak proximity to adventure, amenity & discovery.



KELSO/GLEN EDEN



DOWNTOWN MILTON



THE BARN DOOR CAFÉ & STUDIO

HOME & ABOUND

PARKS & GREENSPACE

- 1. Kelso Conservation Area
- 2. Milton Community Sports Park
- 3. Sunny Mount Park
- 4. Rattlesnake Point Conservation Area
- 5. Lowville Park
- 6. Livingston Park

DINING & RETAIL

- 7. Pasqualino Fine Food & Wine
- 8. Milton Mall Shopping Centre
- 9. LCBO
- 10. La Rose Fine Italian Bakery
- 11. Sobeys
- 12. Derry Heights Plaza
- 13. No Frills
- 14. Locanda
- 15. Walmart
- 16. Starbucks
- 17. Longo's
- 18. Goodfellas Wood Oven Pizza
- 19. EddieO's PourHouse & Kitchen
- 20. Milton Common Shopping Mall
- 21. The Home Depot
- 22. Lowe's
- 23. Derry Centre
- 24. The Bistro on Main
- 25. Pretty Rad
- 26. Bryden's Pub & Restaurant
- 27. Blossom Café
- 28. The Barn Door Café & Studio
- 29. Orange Snail Brewers

EDUCATION

- 30. St. Scholastica Catholic Elementary School
- 31. P.L. Roberston Public School
- 32. Boyne Public School
- 33. St. Francis Xavier Catholic Secondary School
- 34. University of Toronto Mississauga
- 35. Sheridan College Trafalgar Road Campus
- 36. Mohawk College

RECREATION

- 37. Milton Leisure Centre
- 38. Milton Memorial Arena
- 39. Milton Tennis Club
- 40. Milton Sports Centre
- 41. Rattlesnake Point Golf Club
- 42. Mattamy National Cycling Centre
- 43. Springridge Farm
- 44. FirstOntario Arts Centre Milton
- 45. Sherwood Community Centre & Library
- 46. Chudleigh's Entertainment Farm
- 47. Milton Farmer's Market
- 48. Modo Yoga Milton
- 49. F45 Training Milton
- 50. ONYX FIT

SERVICES

- 51. TD Bank
- 52. Scotiabank
- 53. CIBC
- 54. RBC
- 55. HSBC
- 56. Milton District Hospital
- 57. Primecare Family Health
- 58. Oakville Trafalgar Memorial Hospital

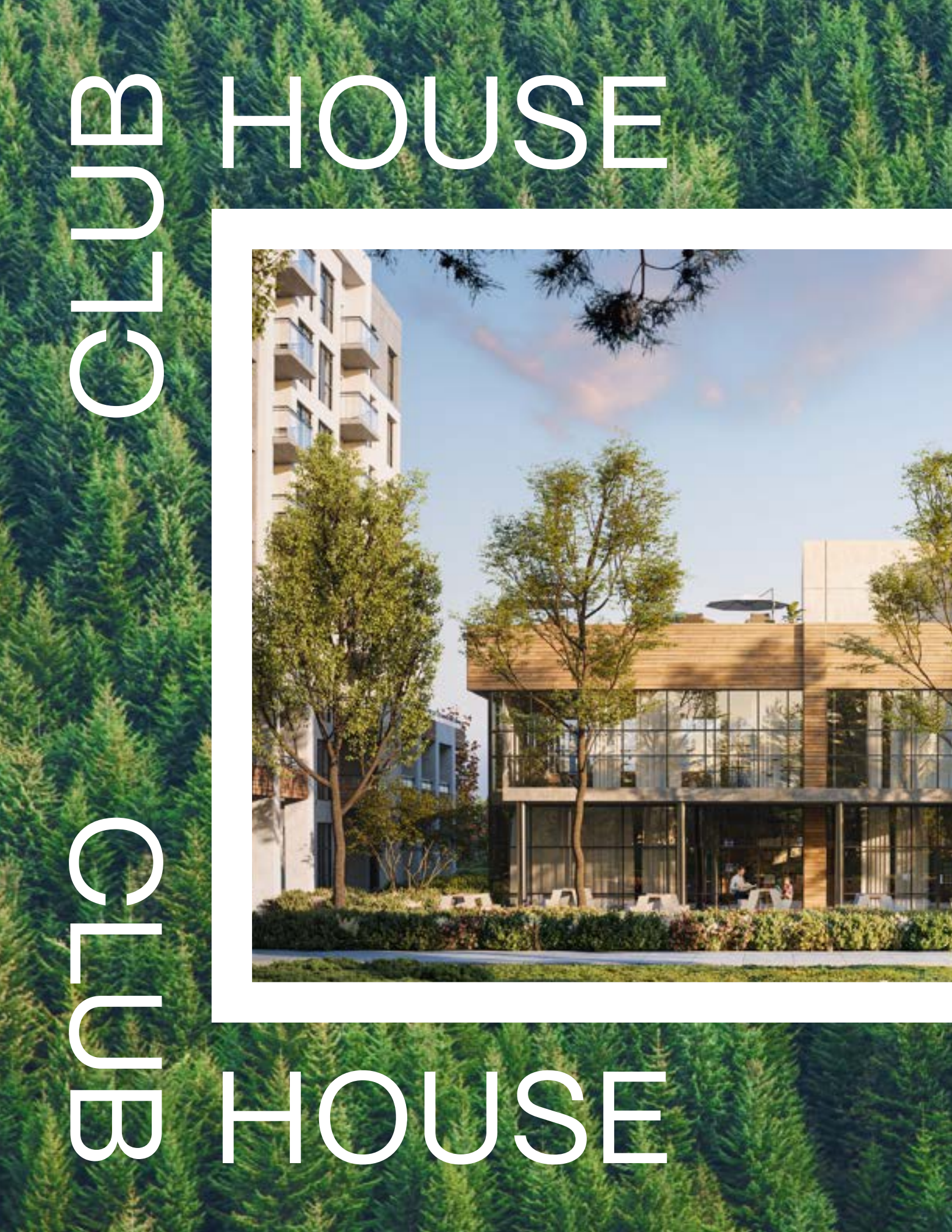


NATURE & AMENITY.

Proximity & peace of mind. Surrounded by all you need & set against a backdrop you could only envision.

The community's design approach was to create a neutral environment that is layered with character and accentuated with rich hues that connect with the natural backdrop and command attention.





CLUBHOUSE

CLUBHOUSE



NO MEMBERSHIP NEEDED.

Part community centre, part immersive experience, The Clubhouse amenity pavilion is where residents, family & friends can relax & unwind, connect & disconnect, & take in all Mile & Creek has to offer.

Discover 3 floors of amenity-rich spaces, including a media room, co-working space, fitness centre, concierge, social lounge, entertainment area, and an expansive rooftop terrace with BBQ's, dining area and fireside lounge overlooking protected greenspace.



A BALANCE OF FORM & FUNCTION.

Mile & Creek showcases finishes that highlight a sense of harmony, with the layering of wood, metal, glass, and stone along with luxe textiles for a cohesive feel throughout.



MATTAMY HOMES - MILE & CREEK



Organic shapes and colours are introduced in the wall coverings, artwork, furniture, and decorative lighting fixtures, to add depth, dimension, and interest to every space.

MATTAMY HOMES - MILE & CREEK





FROM ABOVE
& BEYOND EXPECTATION

SOCIAL LOUNGE



CO-WORKING SPACE



DINING/
ENTERTAINMENT
LOUNGE

MEDIA ROOM

2ND FLOOR

FIRESIDE LOUNGE

SUNDECK



OUTDOOR DINING WITH BBQS

KITCHENETTE



ROOF TOP



A PLACE & A FEELING

ALL THAT'S POSSIBLE.

Rising eight-storeys into Milton's verdant and vibrant landscape is the first phase of Mile & Creek, a 6 building condo community backing onto protected greenspace and at the forefront of modern living.

Spacious suites have been designed for today's urban dweller, with bright, open spaces, upgraded standard features & finishes, and amenities that add, enhance & elevate every day.

A PLACE & A FEELING

INTERIORS COMING SOON

INTERIORS COMING SOON



SOLEIL, MILTON



WESTBEND RESIDENCES, TORONTO

MARTHA JAMES CONDOMINIUMS, BURLINGTON

MATTAMY HOMES & WHAT MATTERS MOST.

The company has had the privilege of building homes for over 100,000 families, while quietly growing its world-class condominium portfolio. Now, Mattamy is expanding its focus and increasing its urban presence. It continues to evolve and grow the high-rise multi-family business while continually improving and applying the same customer-first thinking, passion, and attention to detail our homeowners expect from the Mattamy name.

Mattamy Homes builds responsibly, thoughtfully, and innovatively, changing the landscape of condo buildings as you know it. What started as a simple idea to design homes for how you live have made us the largest privately-owned homebuilder in North America, and we truly believe that the best is yet to come.

ALL YOU ENVISIONED
&
THEN SOME







