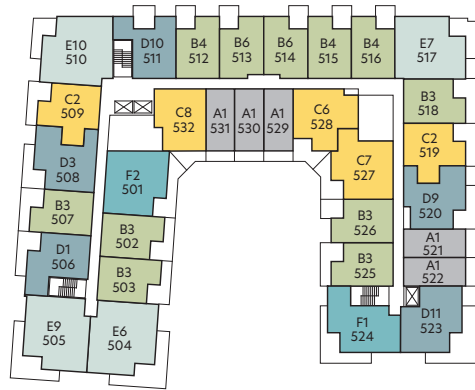
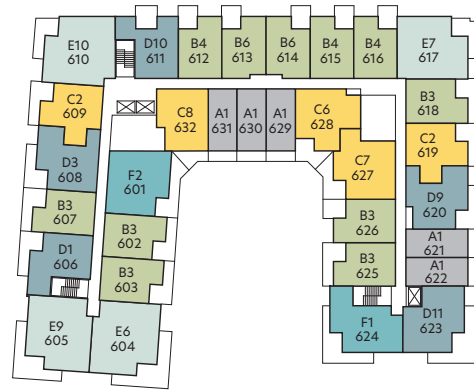


# KEY PLAN

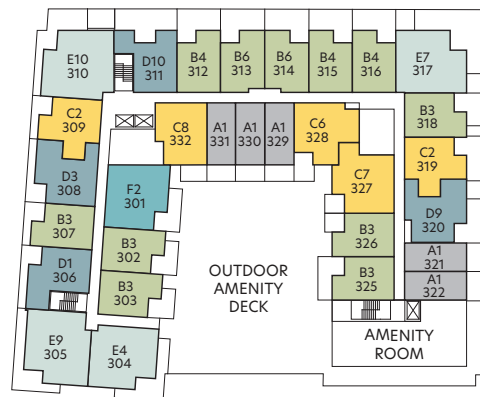
 **RIVERVIEW**  
AT SOKANA



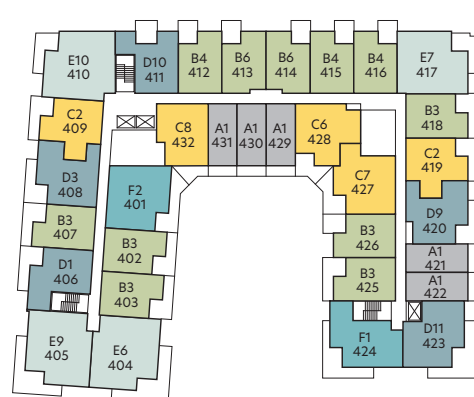
LEVEL 5



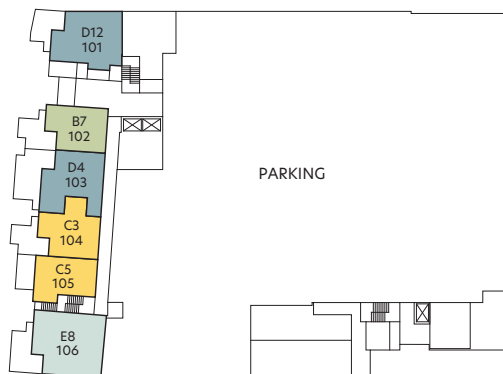
LEVEL 6



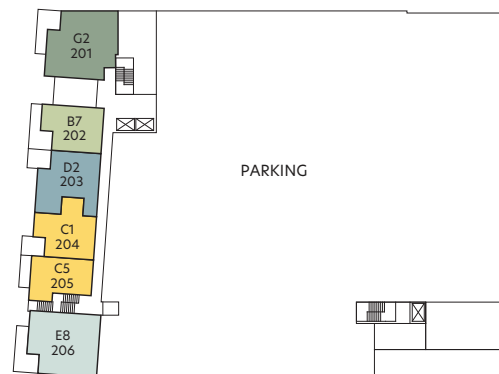
LEVEL 3



LEVEL 4



LEVEL 1



LEVEL 2

STUDIO
  1 BED + DEN
  1 BED + FLEX
  2 BED
  2 BED + DEN
  2 BED + FLEX
  3 BED

This is not an offering for sale. Any such offering must be made by way of disclosure statement. In our continuing effort to improve the product, the developer reserves the right to modify plans specifications, features, and prices without notice. Materials may be substituted with equivalent or better if required. All dimensions and sizes are approximate and actual final measurements may vary. E. & O.E. The contents of this are not intended to solicit interest from any non-Canadian individual or entity as defined by the Prohibition on the Purchase of Residential Property by Non-Canadians Act.

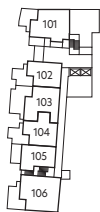
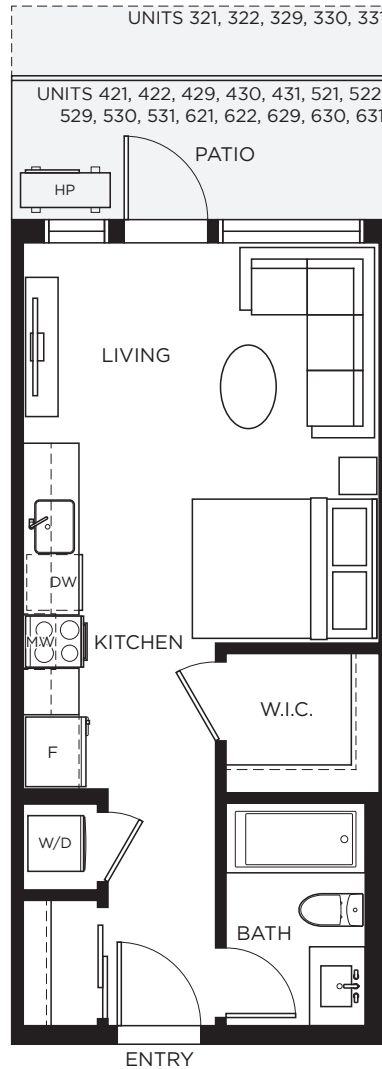
# A1

## STUDIO

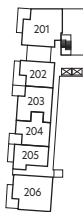
INTERIOR 398 SF  
EXTERIOR 75-118 SF  
TOTAL 473-516 SF

**RIVERVIEW**  
AT SOKANA

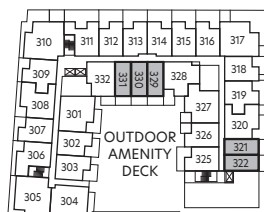
Patio sizes for specific homes may vary,  
please see your sales manager for more information.



LEVEL 1



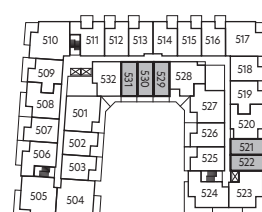
LEVEL 2



LEVEL 3



LEVEL 4



LEVEL 5



LEVEL 6



This is not an offering for sale. Any such offering must be made by way of disclosure statement. In our continuing effort to improve the product, the developer reserves the right to modify plans specifications, features, and prices without notice. Materials may be substituted with equivalent or better if required. All dimensions and sizes are approximate and actual final measurements may vary. E. & O.E. The contents of this are not intended to solicit interest from any non-Canadian individual or entity as defined by the Prohibition on the Purchase of Residential Property by Non-Canadians Act.

# B3

1 BED + DEN, 1 BATH

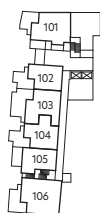
INTERIOR 538-549 SF

EXTERIOR 97-205 SF

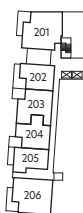
TOTAL 635-754 SF

**RIVERVIEW**  
AT SOKANA

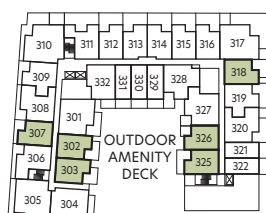
Patio sizes for specific homes may vary,  
please see your sales manager for more information.



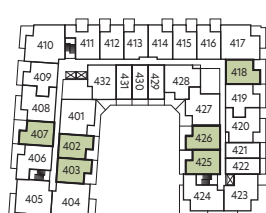
LEVEL 1



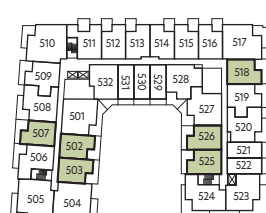
LEVEL 2



LEVEL 3



LEVEL 4



LEVEL 5



LEVEL 6



This is not an offering for sale. Any such offering must be made by way of disclosure statement. In our continuing effort to improve the product, the developer reserves the right to modify plans specifications, features, and prices without notice. Materials may be substituted with equivalent or better if required. All dimensions and sizes are approximate and actual final measurements may vary. E. & O.E. The contents of this are not intended to solicit interest from any non-Canadian individual or entity as defined by the Prohibition on the Purchase of Residential Property by Non-Canadians Act.

# B4

1 BED + DEN, 1 BATH

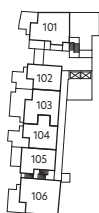
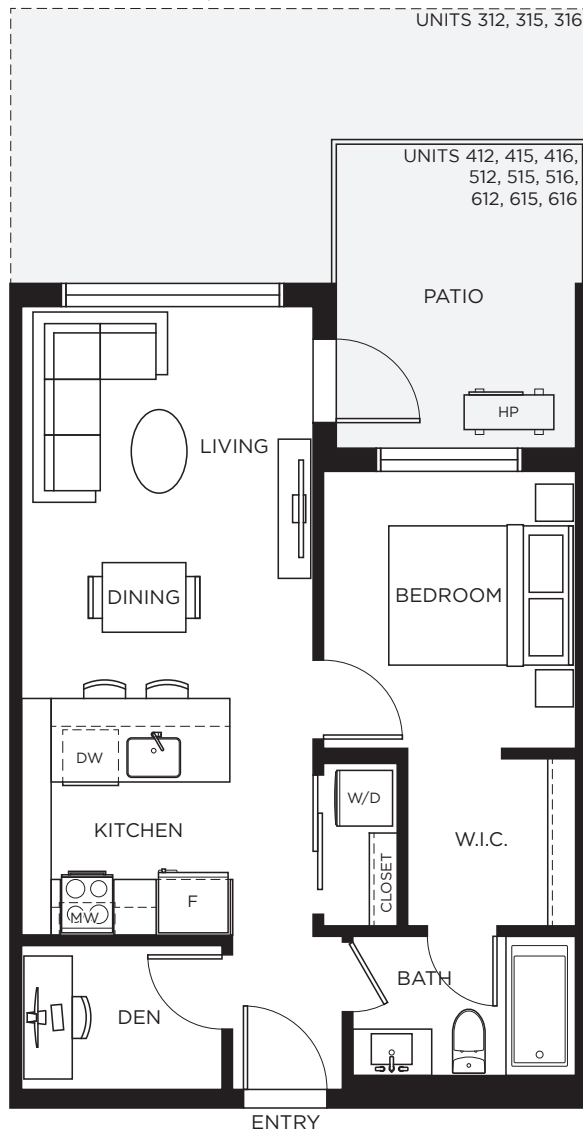
INTERIOR 549 SF

EXTERIOR 108-280 SF

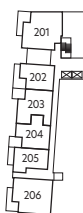
TOTAL 657-829 SF

**RIVERVIEW**  
AT SOKANA

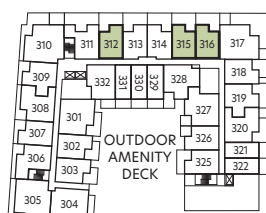
Patio sizes for specific homes may vary,  
please see your sales manager for more information.



LEVEL 1



LEVEL 2



LEVEL 3



LEVEL 4



LEVEL 5



LEVEL 6



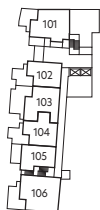
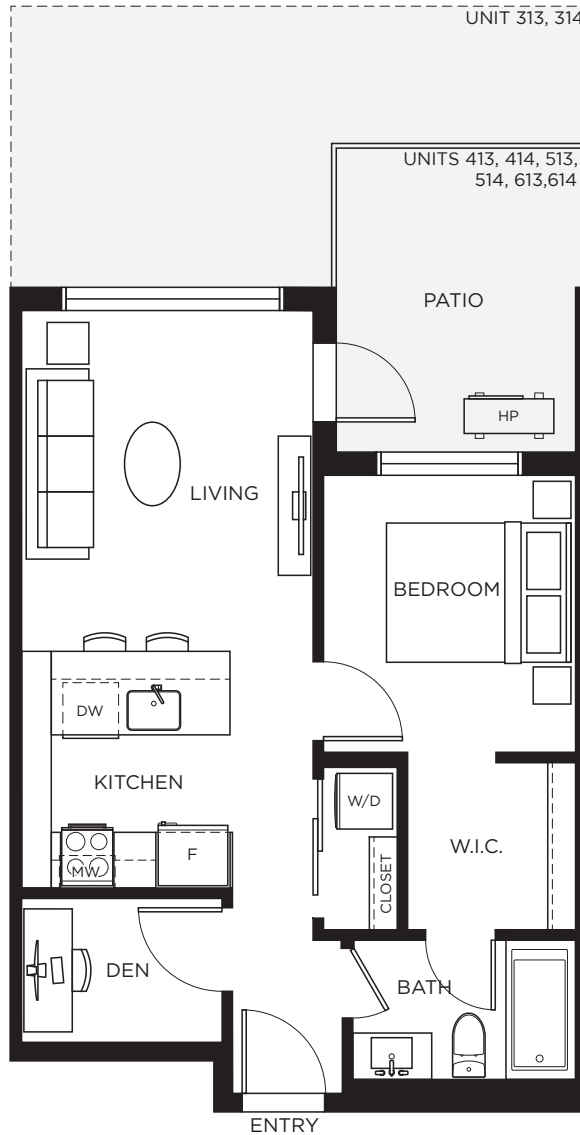
This is not an offering for sale. Any such offering must be made by way of disclosure statement. In our continuing effort to improve the product, the developer reserves the right to modify plans specifications, features, and prices without notice. Materials may be substituted with equivalent or better if required. All dimensions and sizes are approximate and actual final measurements may vary. E. & O.E. The contents of this are not intended to solicit interest from any non-Canadian individual or entity as defined by the Prohibition on the Purchase of Residential Property by Non-Canadians Act.

# B6

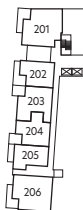
1 BED + DEN, 1 BATH  
 INTERIOR 538 SF  
 EXTERIOR 108-280 SF  
 TOTAL 646-818 SF

**RIVERVIEW**  
 AT SOKANA

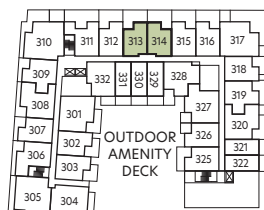
Patio sizes for specific homes may vary,  
 please see your sales manager for more information.



LEVEL 1



LEVEL 2



LEVEL 3



LEVEL 4



LEVEL 5



LEVEL 6



This is not an offering for sale. Any such offering must be made by way of disclosure statement. In our continuing effort to improve the product, the developer reserves the right to modify plans specifications, features, and prices without notice. Materials may be substituted with equivalent or better if required. All dimensions and sizes are approximate and actual final measurements may vary. E. & O.E. The contents of this are not intended to solicit interest from any non-Canadian individual or entity as defined by the Prohibition on the Purchase of Residential Property by Non-Canadians Act.

# B7

1 BED + DEN, 1 BATH

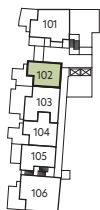
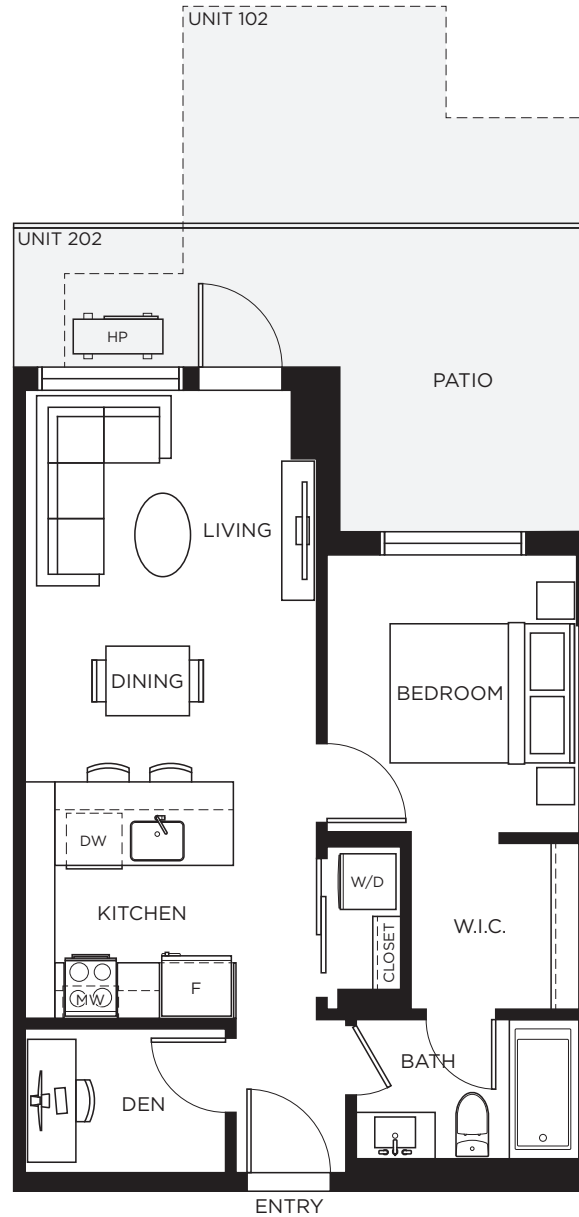
INTERIOR 549 SF

EXTERIOR 172-248 SF

TOTAL 721-797 SF

**RIVERVIEW**  
AT SOKANA

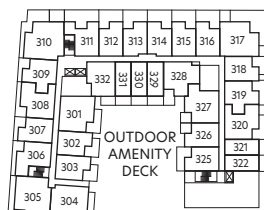
Patio sizes for specific homes may vary,  
please see your sales manager for more information.



LEVEL 1



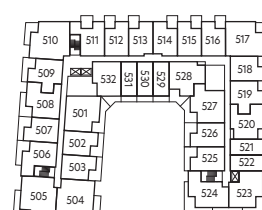
LEVEL 2



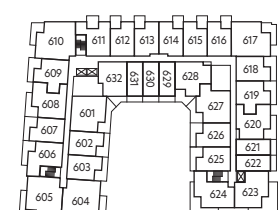
LEVEL 3



LEVEL 4



LEVEL 5



LEVEL 6



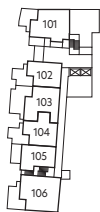
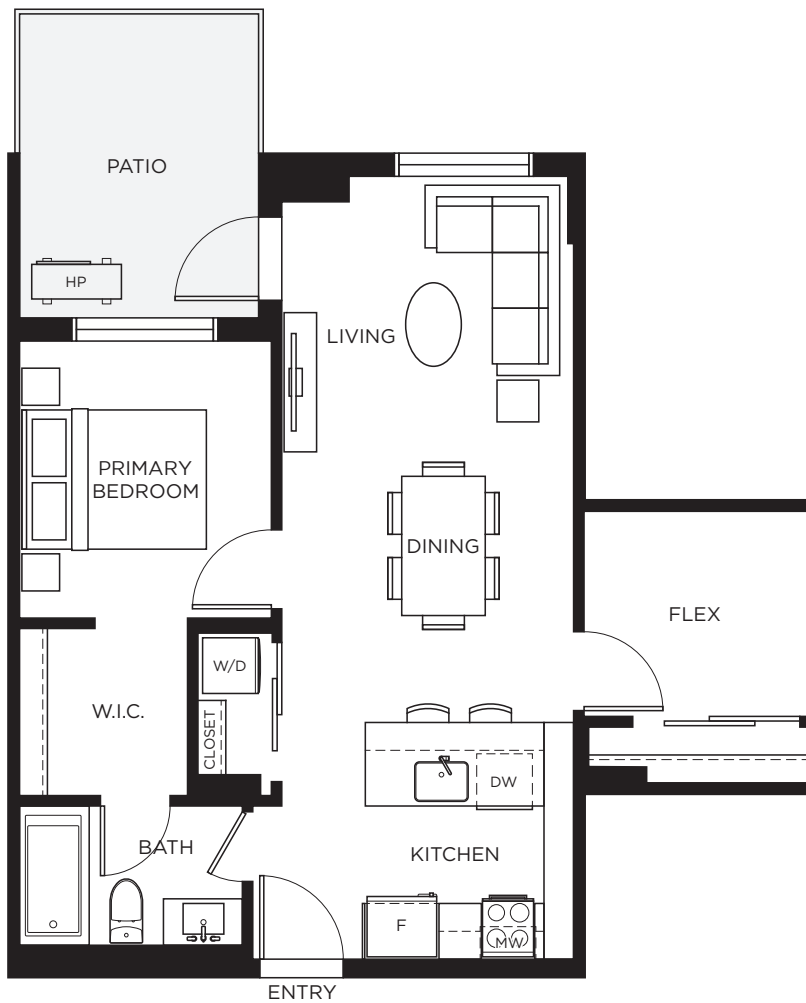
This is not an offering for sale. Any such offering must be made by way of disclosure statement. In our continuing effort to improve the product, the developer reserves the right to modify plans specifications, features, and prices without notice. Materials may be substituted with equivalent or better if required. All dimensions and sizes are approximate and actual final measurements may vary. E. & O.E. The contents of this are not intended to solicit interest from any non-Canadian individual or entity as defined by the Prohibition on the Purchase of Residential Property by Non-Canadians Act.

# C1

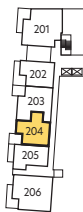
1 BED + FLEX, 1 BATH

INTERIOR 635 SF  
EXTERIOR 108 SF  
TOTAL 743 SF

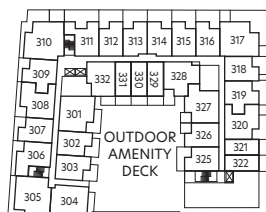
**RIVERVIEW**  
AT SOKANA



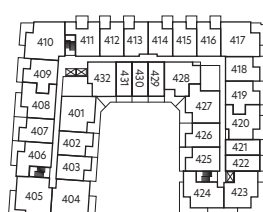
LEVEL 1



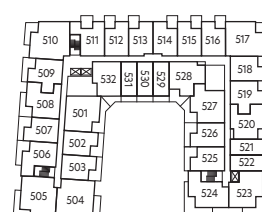
LEVEL 2



LEVEL 3



LEVEL 4



LEVEL 5



LEVEL 6



This is not an offering for sale. Any such offering must be made by way of disclosure statement. In our continuing effort to improve the product, the developer reserves the right to modify plans specifications, features, and prices without notice. Materials may be substituted with equivalent or better if required. All dimensions and sizes are approximate and actual final measurements may vary. E. & O.E. The contents of this are not intended to solicit interest from any non-Canadian individual or entity as defined by the Prohibition on the Purchase of Residential Property by Non-Canadians Act.

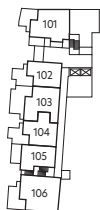
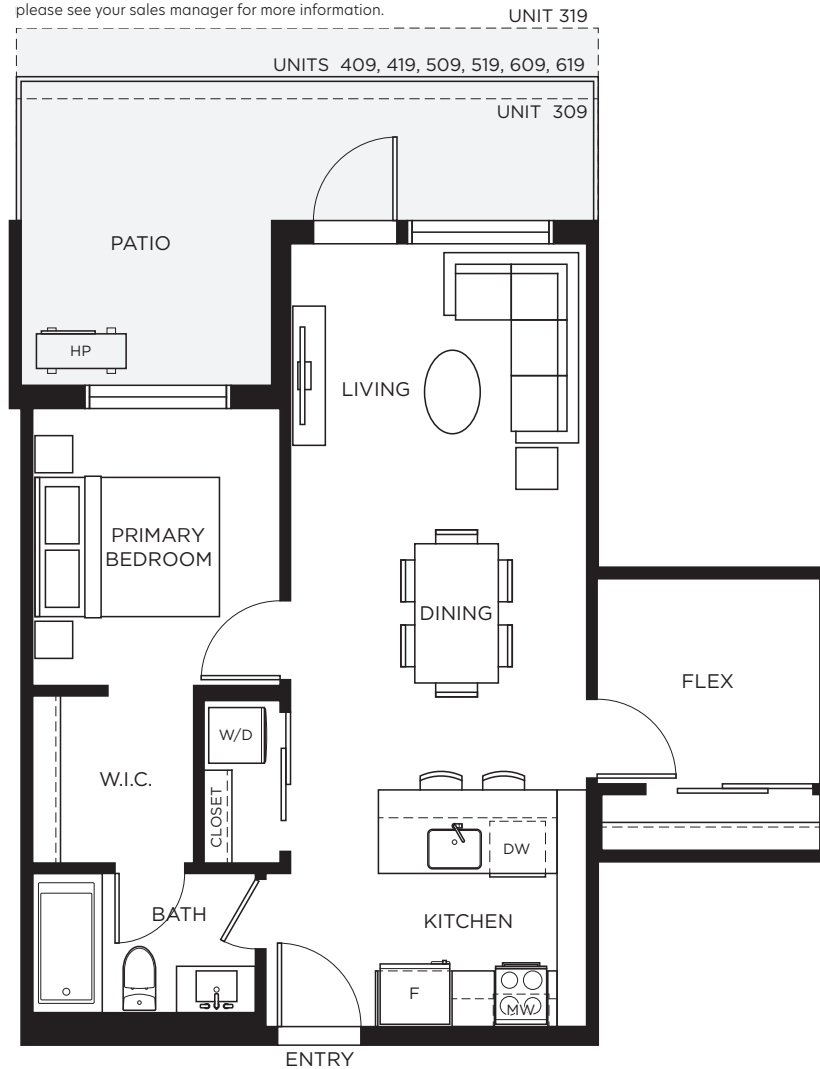
# C2

1 BED + FLEX, 1 BATH

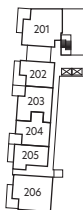
INTERIOR 635 SF  
EXTERIOR 161-215 SF  
TOTAL 796-850 SF

**RIVERVIEW**  
AT SOKANA

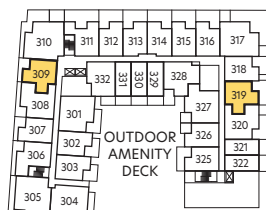
Patio sizes for specific homes may vary,  
please see your sales manager for more information.



LEVEL 1



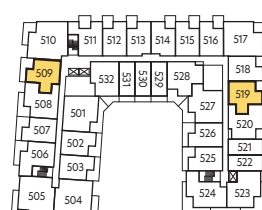
LEVEL 2



LEVEL 3



LEVEL 4



LEVEL 5



LEVEL 6



This is not an offering for sale. Any such offering must be made by way of disclosure statement. In our continuing effort to improve the product, the developer reserves the right to modify plans specifications, features, and prices without notice. Materials may be substituted with equivalent or better if required. All dimensions and sizes are approximate and actual final measurements may vary. E. & O.E. The contents of this are not intended to solicit interest from any non-Canadian individual or entity as defined by the Prohibition on the Purchase of Residential Property by Non-Canadians Act.

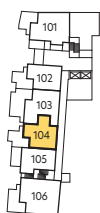
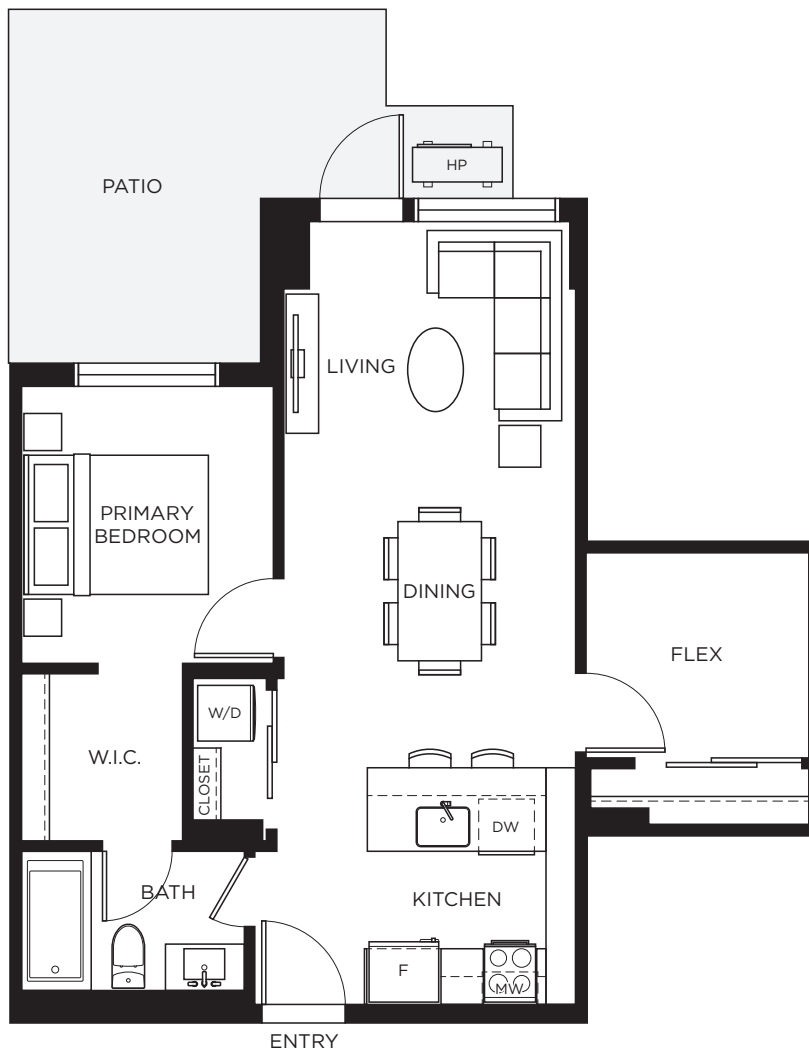


# C3

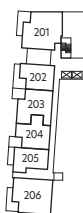
1 BED + FLEX, 1 BATH

INTERIOR 635 SF  
EXTERIOR 237 SF  
TOTAL 872 SF

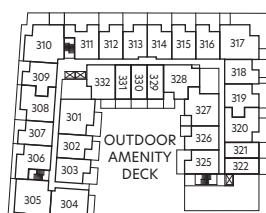
 **RIVERVIEW**  
AT SOKANA



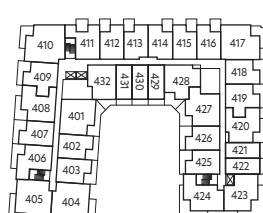
LEVEL 1



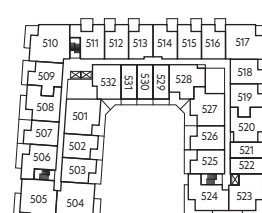
LEVEL 2



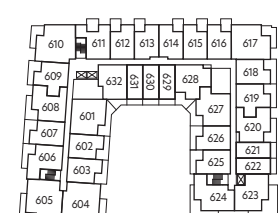
LEVEL 3



LEVEL 4



LEVEL 5



LEVEL 6



This is not an offering for sale. Any such offering must be made by way of disclosure statement. In our continuing effort to improve the product, the developer reserves the right to modify plans specifications, features, and prices without notice. Materials may be substituted with equivalent or better if required. All dimensions and sizes are approximate and actual final measurements may vary. E. & O.E. The contents of this are not intended to solicit interest from any non-Canadian individual or entity as defined by the Prohibition on the Purchase of Residential Property by Non-Canadians Act.

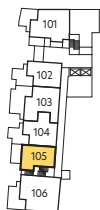
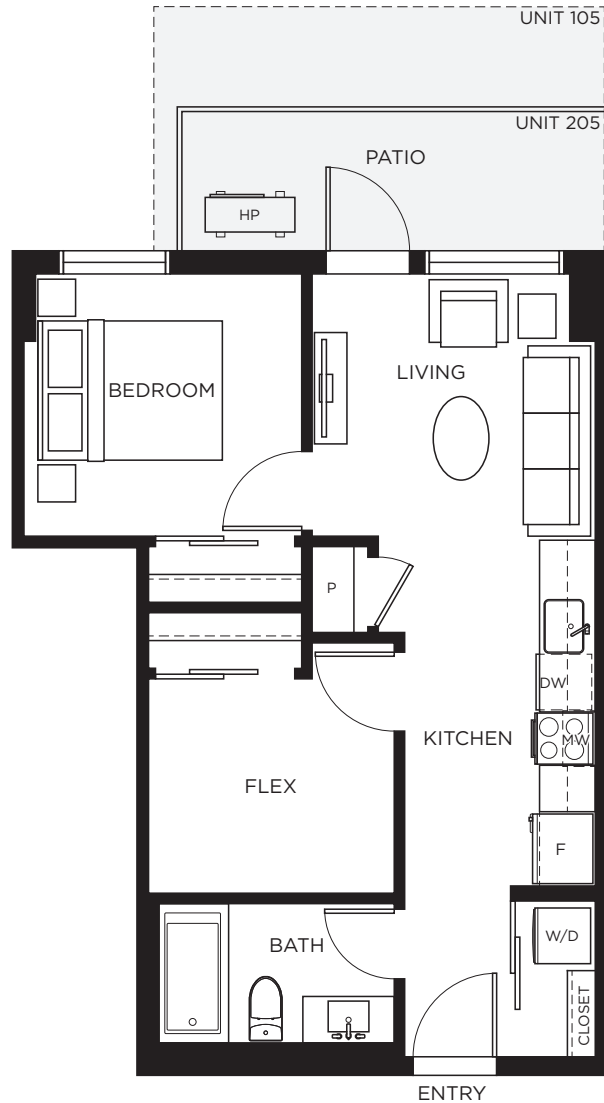
# C5

1 BED + FLEX, 1 BATH

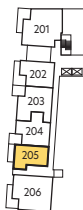
INTERIOR 549 SF  
EXTERIOR 86-151 SF  
TOTAL 635-700 SF

**RIVERVIEW**  
AT SOKANA

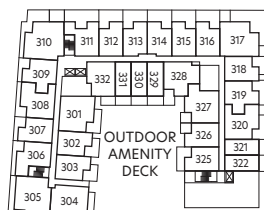
Patio sizes for specific homes may vary,  
please see your sales manager for more information.



LEVEL 1



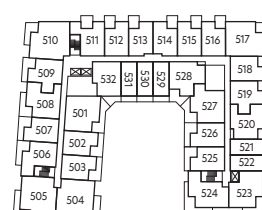
LEVEL 2



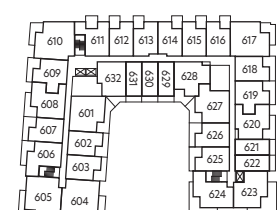
LEVEL 3



LEVEL 4



LEVEL 5



LEVEL 6



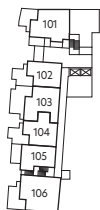
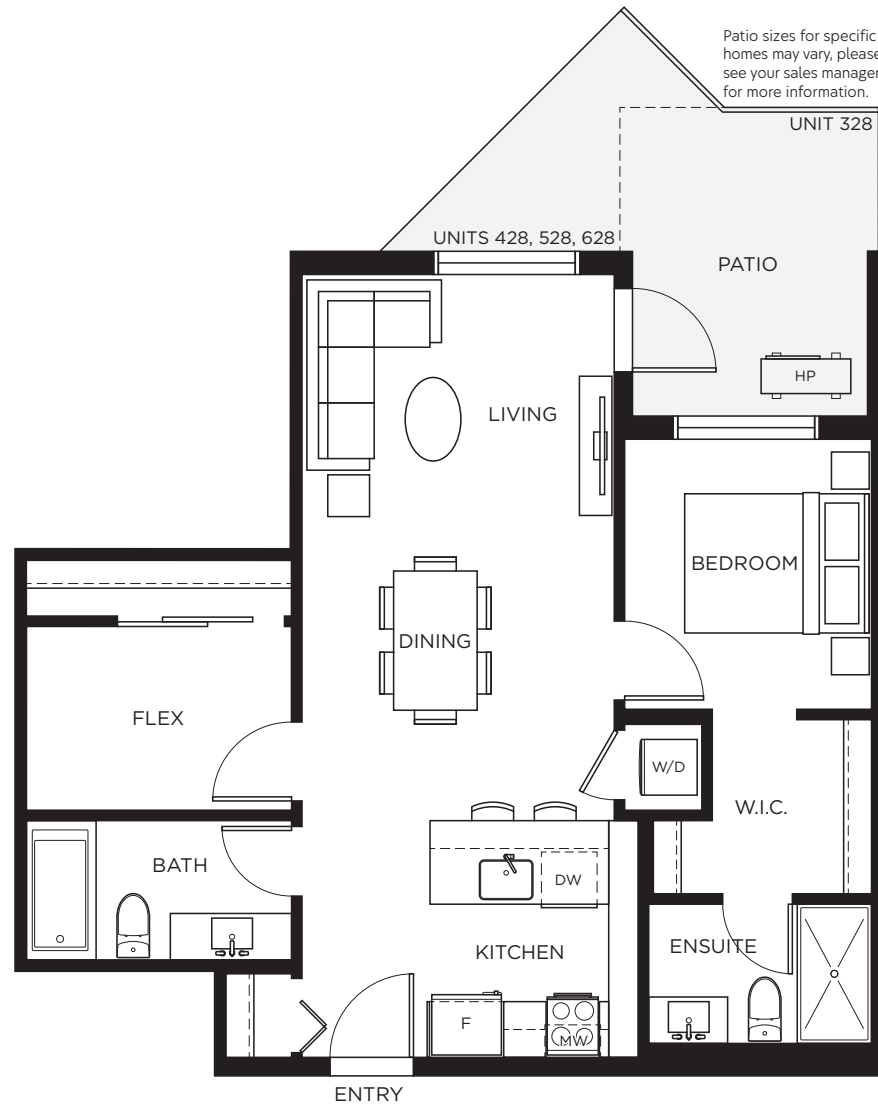
This is not an offering for sale. Any such offering must be made by way of disclosure statement. In our continuing effort to improve the product, the developer reserves the right to modify plans specifications, features, and prices without notice. Materials may be substituted with equivalent or better if required. All dimensions and sizes are approximate and actual final measurements may vary. E. & O.E. The contents of this are not intended to solicit interest from any non-Canadian individual or entity as defined by the Prohibition on the Purchase of Residential Property by Non-Canadians Act.

# C6

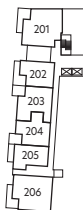
1 BED + FLEX, 2 BATH

INTERIOR 721 SF  
EXTERIOR 140-151 SF  
TOTAL 861-872 SF

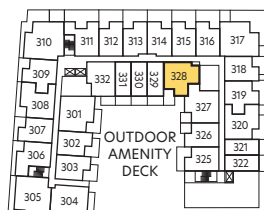
**RIVERVIEW**  
AT SOKANA



LEVEL 1



LEVEL 2



LEVEL 3



LEVEL 4



LEVEL 5



LEVEL 6



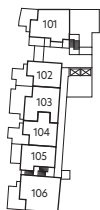
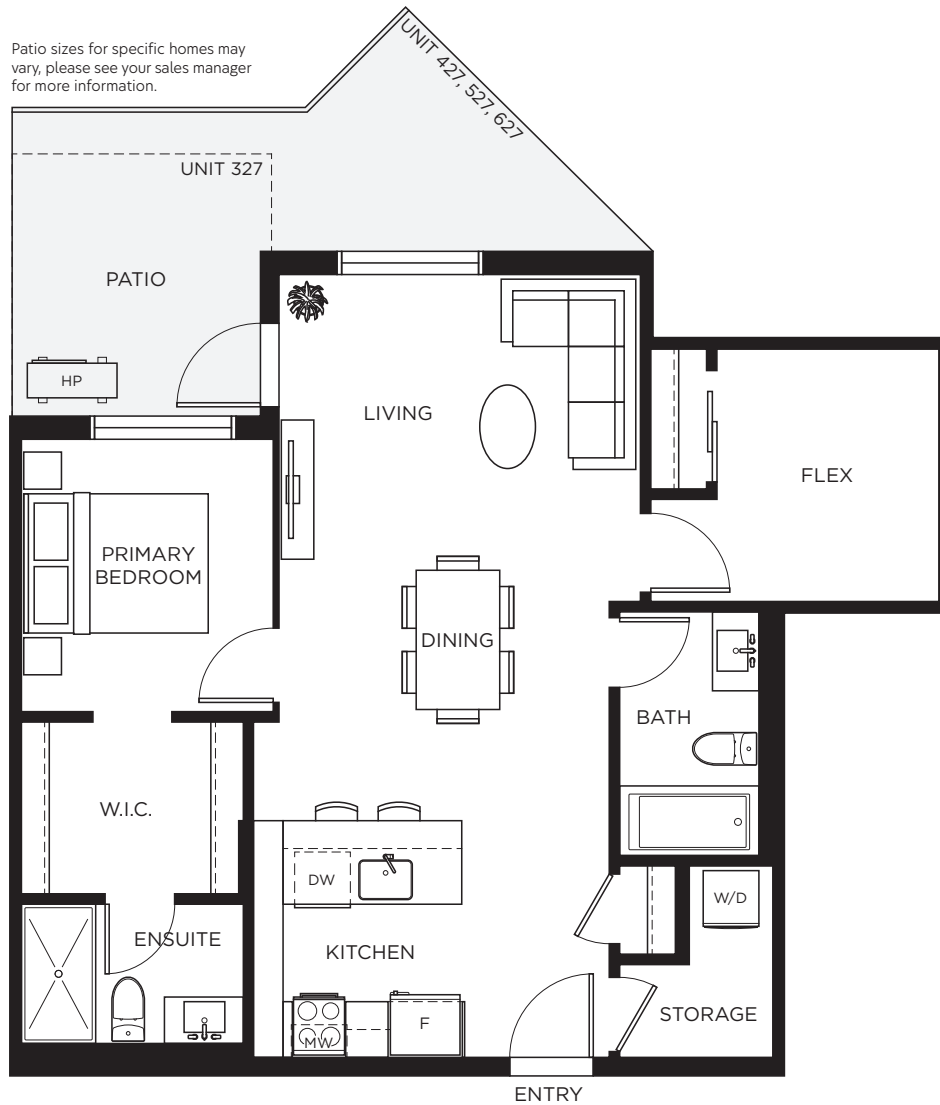
This is not an offering for sale. Any such offering must be made by way of disclosure statement. In our continuing effort to improve the product, the developer reserves the right to modify plans specifications, features, and prices without notice. Materials may be substituted with equivalent or better if required. All dimensions and sizes are approximate and actual final measurements may vary. E. & O.E. The contents of this are not intended to solicit interest from any non-Canadian individual or entity as defined by the Prohibition on the Purchase of Residential Property by Non-Canadians Act.

# C7

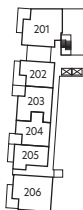
1 BED + FLEX, 2 BATH

INTERIOR 797 SF  
EXTERIOR 97-183 SF  
TOTAL 894-980 SF

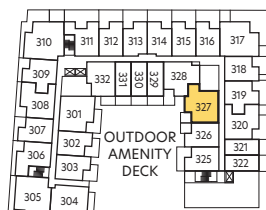
**RIVERVIEW**  
AT SOKANA



LEVEL 1



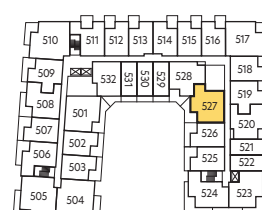
LEVEL 2



LEVEL 3



LEVEL 4



LEVEL 5



LEVEL 6



This is not an offering for sale. Any such offering must be made by way of disclosure statement. In our continuing effort to improve the product, the developer reserves the right to modify plans specifications, features, and prices without notice. Materials may be substituted with equivalent or better if required. All dimensions and sizes are approximate and actual final measurements may vary. E. & O.E. The contents of this are not intended to solicit interest from any non-Canadian individual or entity as defined by the Prohibition on the Purchase of Residential Property by Non-Canadians Act.

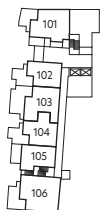
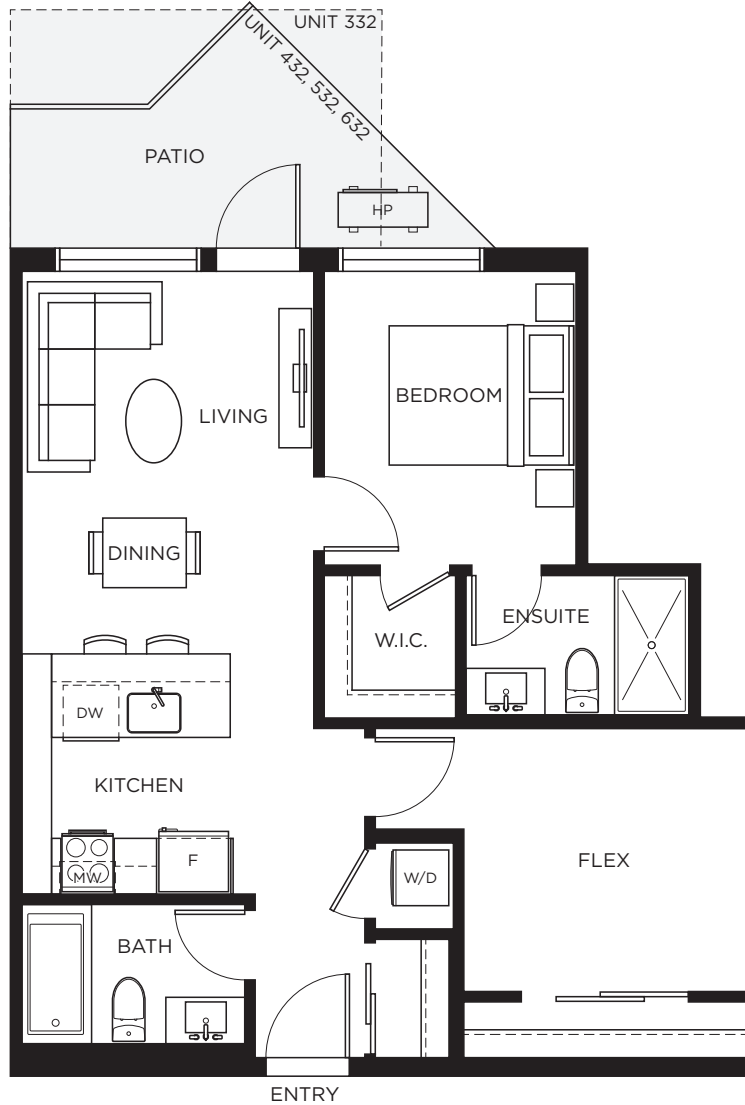
# C8

1 BED + FLEX, 2 BATH

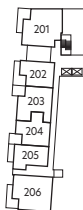
INTERIOR 700 SF  
EXTERIOR 97-108 SF  
TOTAL 797-808 SF

**RIVERVIEW**  
AT SOKANA

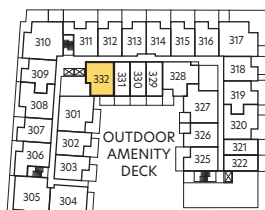
Patio sizes for specific homes may vary, please see your sales manager for more information.



LEVEL 1



LEVEL 2



LEVEL 3



LEVEL 4



LEVEL 5



LEVEL 6



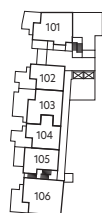
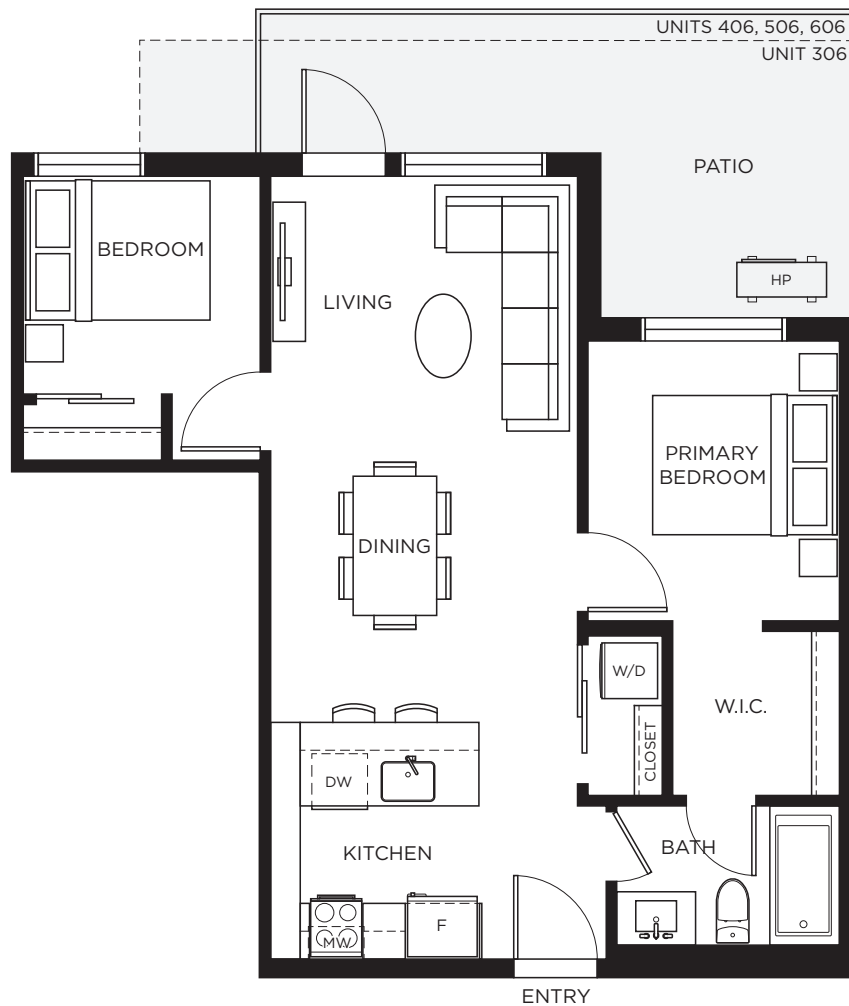
This is not an offering for sale. Any such offering must be made by way of disclosure statement. In our continuing effort to improve the product, the developer reserves the right to modify plans specifications, features, and prices without notice. Materials may be substituted with equivalent or better if required. All dimensions and sizes are approximate and actual final measurements may vary. E. & O.E. The contents of this are not intended to solicit interest from any non-Canadian individual or entity as defined by the Prohibition on the Purchase of Residential Property by Non-Canadians Act.

# D1

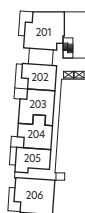
2 BED, 1 BATH  
 INTERIOR 657 SF  
 EXTERIOR 172-215 SF  
 TOTAL 829-872 SF

**RIVERVIEW**  
 AT SOKANA

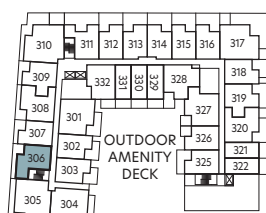
Patio sizes for specific homes may vary,  
 please see your sales manager for more information.



LEVEL 1



LEVEL 2



LEVEL 3



LEVEL 4



LEVEL 5



LEVEL 6

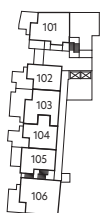


This is not an offering for sale. Any such offering must be made by way of disclosure statement. In our continuing effort to improve the product, the developer reserves the right to modify plans specifications, features, and prices without notice. Materials may be substituted with equivalent or better if required. All dimensions and sizes are approximate and actual final measurements may vary. E. & O.E. The contents of this are not intended to solicit interest from any non-Canadian individual or entity as defined by the Prohibition on the Purchase of Residential Property by Non-Canadians Act.

# D2

2 BED, 2 BATH  
 INTERIOR 732 SF  
 EXTERIOR 108 SF  
 TOTAL 840 SF

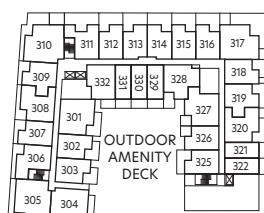
**RIVERVIEW**  
 AT SOKANA



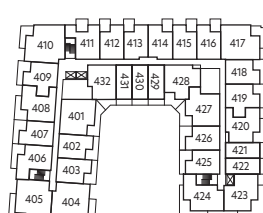
LEVEL 1



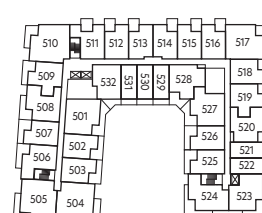
LEVEL 2



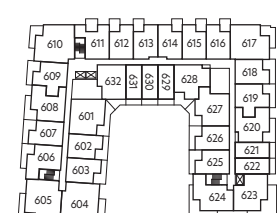
LEVEL 3



LEVEL 4



LEVEL 5



LEVEL 6



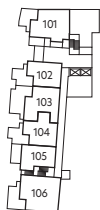
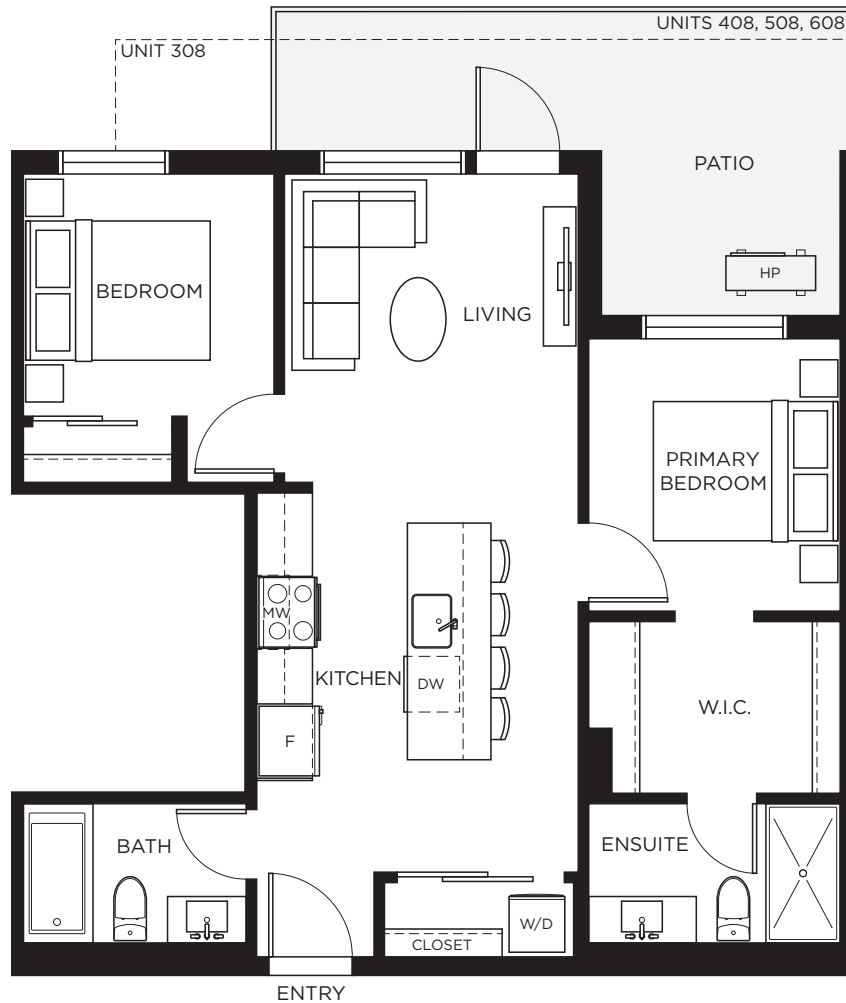
This is not an offering for sale. Any such offering must be made by way of disclosure statement. In our continuing effort to improve the product, the developer reserves the right to modify plans specifications, features, and prices without notice. Materials may be substituted with equivalent or better if required. All dimensions and sizes are approximate and actual final measurements may vary. E. & O.E. The contents of this are not intended to solicit interest from any non-Canadian individual or entity as defined by the Prohibition on the Purchase of Residential Property by Non-Canadians Act.

# D3

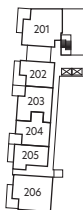
2 BED, 2 BATH  
 INTERIOR 732 SF  
 EXTERIOR 171-215 SF  
 TOTAL 904-947 SF

**RIVERVIEW**  
 AT SOKANA

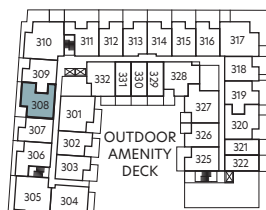
Patio sizes for specific homes may vary,  
 please see your sales manager for more information.



LEVEL 1



LEVEL 2



LEVEL 3



LEVEL 4



LEVEL 5



LEVEL 6



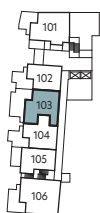
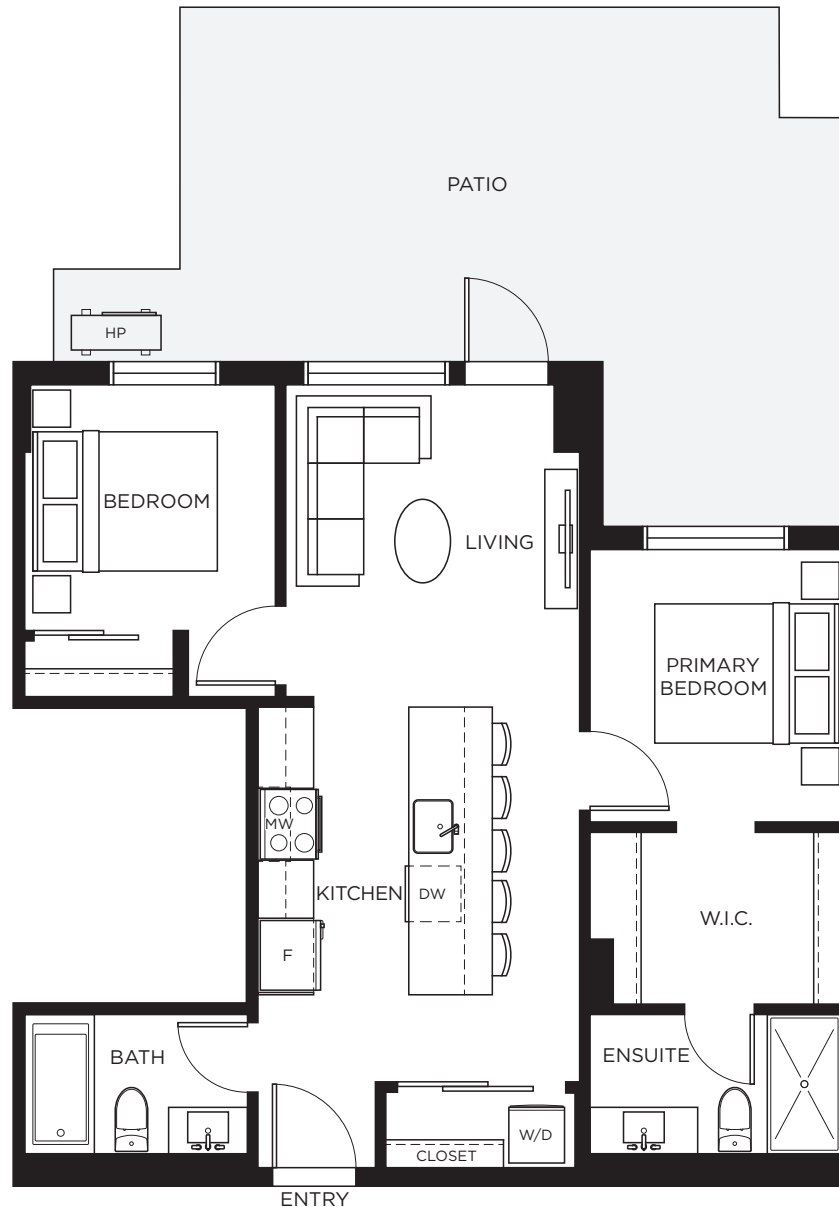
This is not an offering for sale. Any such offering must be made by way of disclosure statement. In our continuing effort to improve the product, the developer reserves the right to modify plans specifications, features, and prices without notice. Materials may be substituted with equivalent or better if required. All dimensions and sizes are approximate and actual final measurements may vary. E. & O.E. The contents of this are not intended to solicit interest from any non-Canadian individual or entity as defined by the Prohibition on the Purchase of Residential Property by Non-Canadians Act.



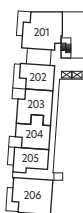
# D4

2 BED, 2 BATH  
 INTERIOR 732 SF  
 EXTERIOR 377 SF  
 TOTAL 1,109 SF

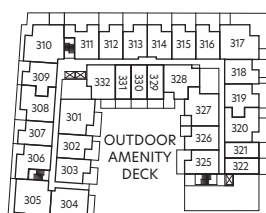
 **RIVERVIEW**  
 AT SOKANA



LEVEL 1



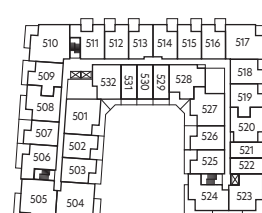
LEVEL 2



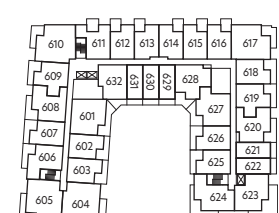
LEVEL 3



LEVEL 4



LEVEL 5



LEVEL 6



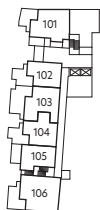
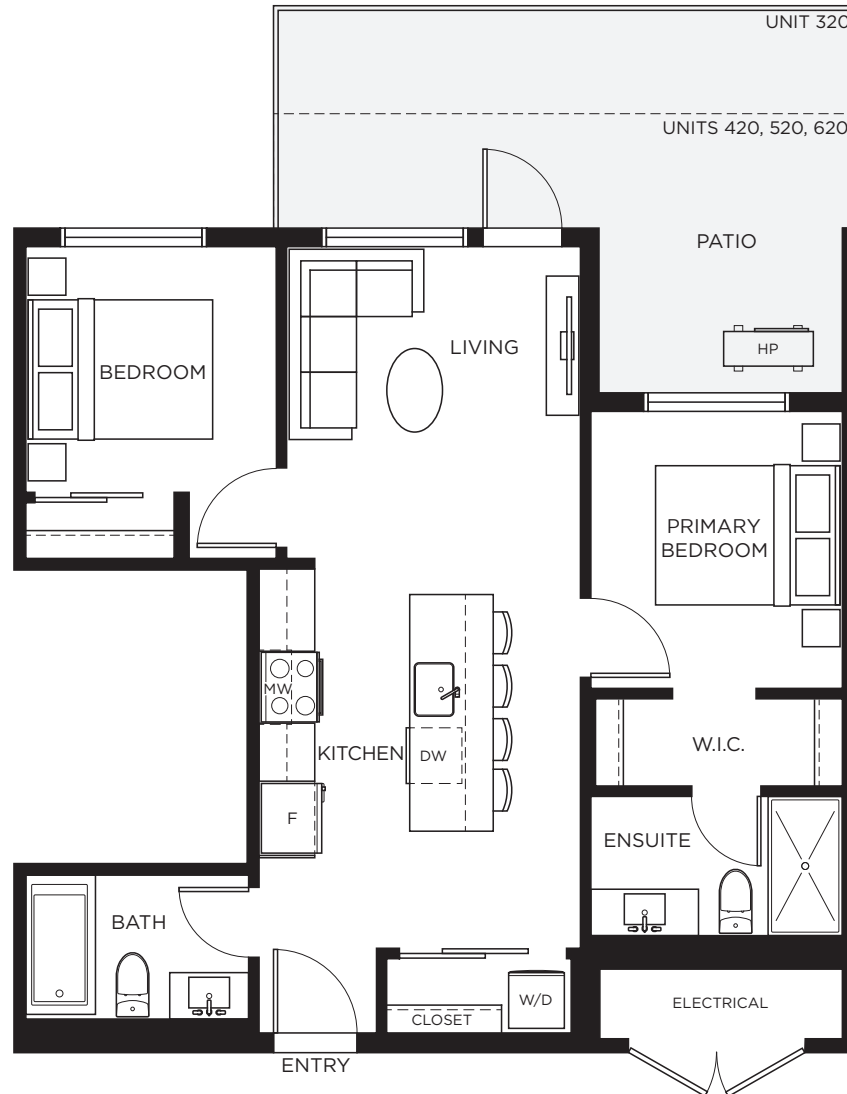
This is not an offering for sale. Any such offering must be made by way of disclosure statement. In our continuing effort to improve the product, the developer reserves the right to modify plans specifications, features, and prices without notice. Materials may be substituted with equivalent or better if required. All dimensions and sizes are approximate and actual final measurements may vary. E. & O.E. The contents of this are not intended to solicit interest from any non-Canadian individual or entity as defined by the Prohibition on the Purchase of Residential Property by Non-Canadians Act.

# D9

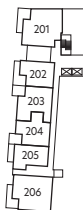
2 BED, 2 BATH  
 INTERIOR 700 SF  
 EXTERIOR 172-226 SF  
 TOTAL 872-926 SF

**RIVERVIEW**  
 AT SOKANA

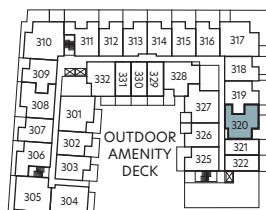
Patio sizes for specific homes may vary,  
 please see your sales manager for more information.



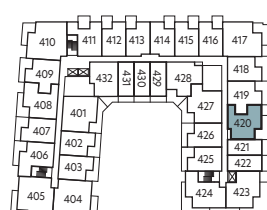
LEVEL 1



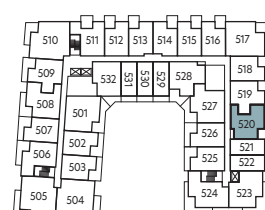
LEVEL 2



LEVEL 3



LEVEL 4



LEVEL 5



LEVEL 6



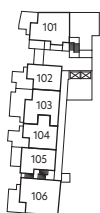
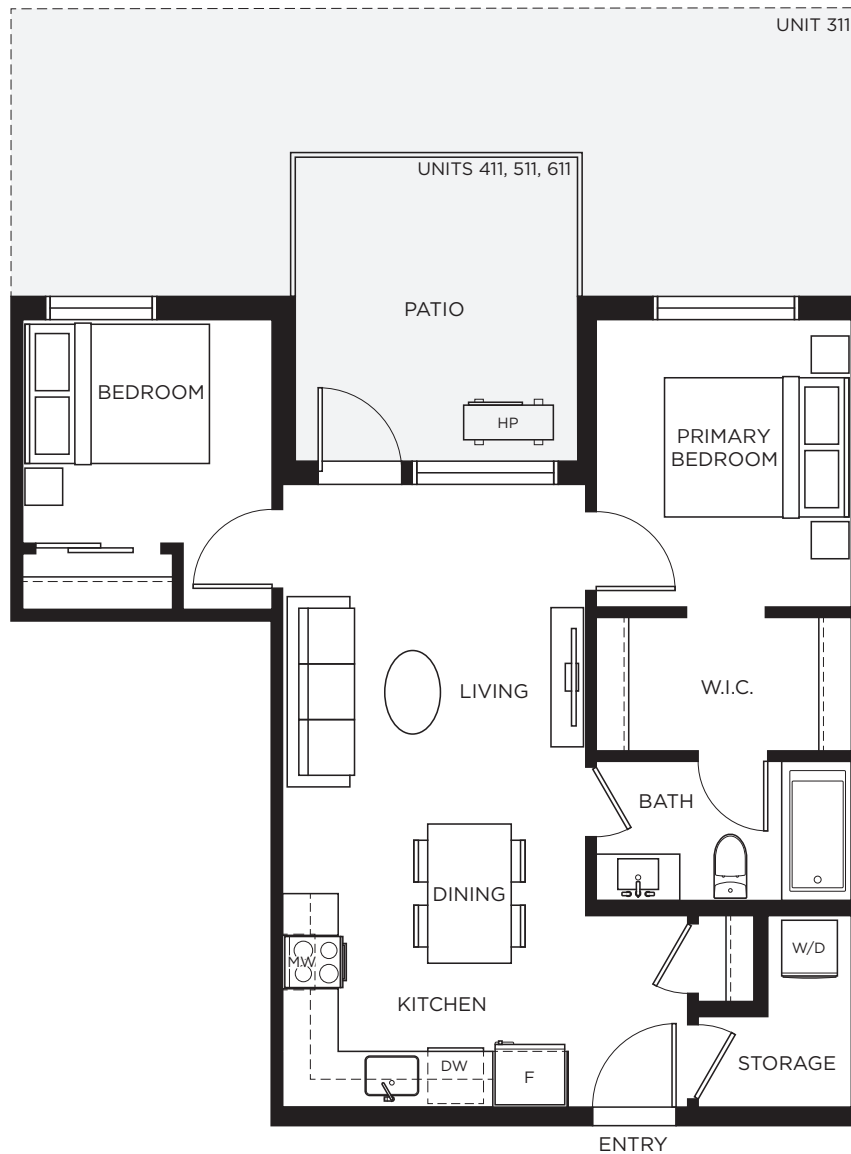
This is not an offering for sale. Any such offering must be made by way of disclosure statement. In our continuing effort to improve the product, the developer reserves the right to modify plans specifications, features, and prices without notice. Materials may be substituted with equivalent or better if required. All dimensions and sizes are approximate and actual final measurements may vary. E. & O.E. The contents of this are not intended to solicit interest from any non-Canadian individual or entity as defined by the Prohibition on the Purchase of Residential Property by Non-Canadians Act.

# D10

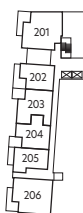
2 BED, 1 BATH  
 INTERIOR 657 SF  
 EXTERIOR 129-377 SF  
 TOTAL 786-1,034 SF

 **RIVERVIEW**  
 AT SOKANA

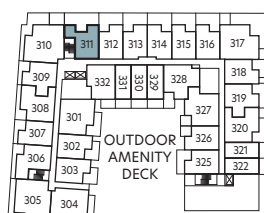
Patio sizes for specific homes may vary,  
 please see your sales manager for more information.



LEVEL 1



LEVEL 2



LEVEL 3



LEVEL 4



LEVEL 5



LEVEL 6

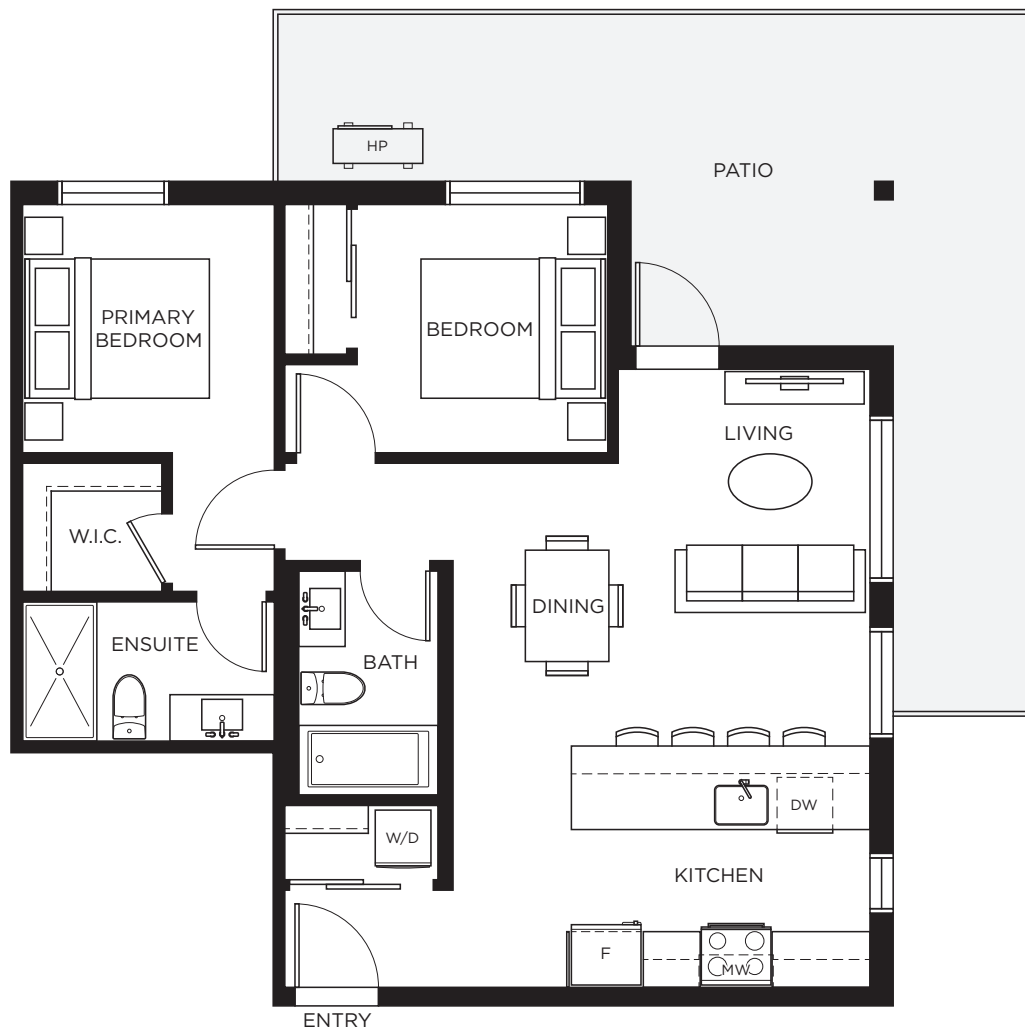


This is not an offering for sale. Any such offering must be made by way of disclosure statement. In our continuing effort to improve the product, the developer reserves the right to modify plans specifications, features, and prices without notice. Materials may be substituted with equivalent or better if required. All dimensions and sizes are approximate and actual final measurements may vary. E. & O.E. The contents of this are not intended to solicit interest from any non-Canadian individual or entity as defined by the Prohibition on the Purchase of Residential Property by Non-Canadians Act.

# D11

2 BED, 2 BATH  
 INTERIOR 764 SF  
 EXTERIOR 344 SF  
 TOTAL 1,108 SF

 **RIVERVIEW**  
 AT SOKANA

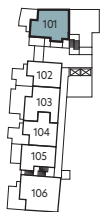
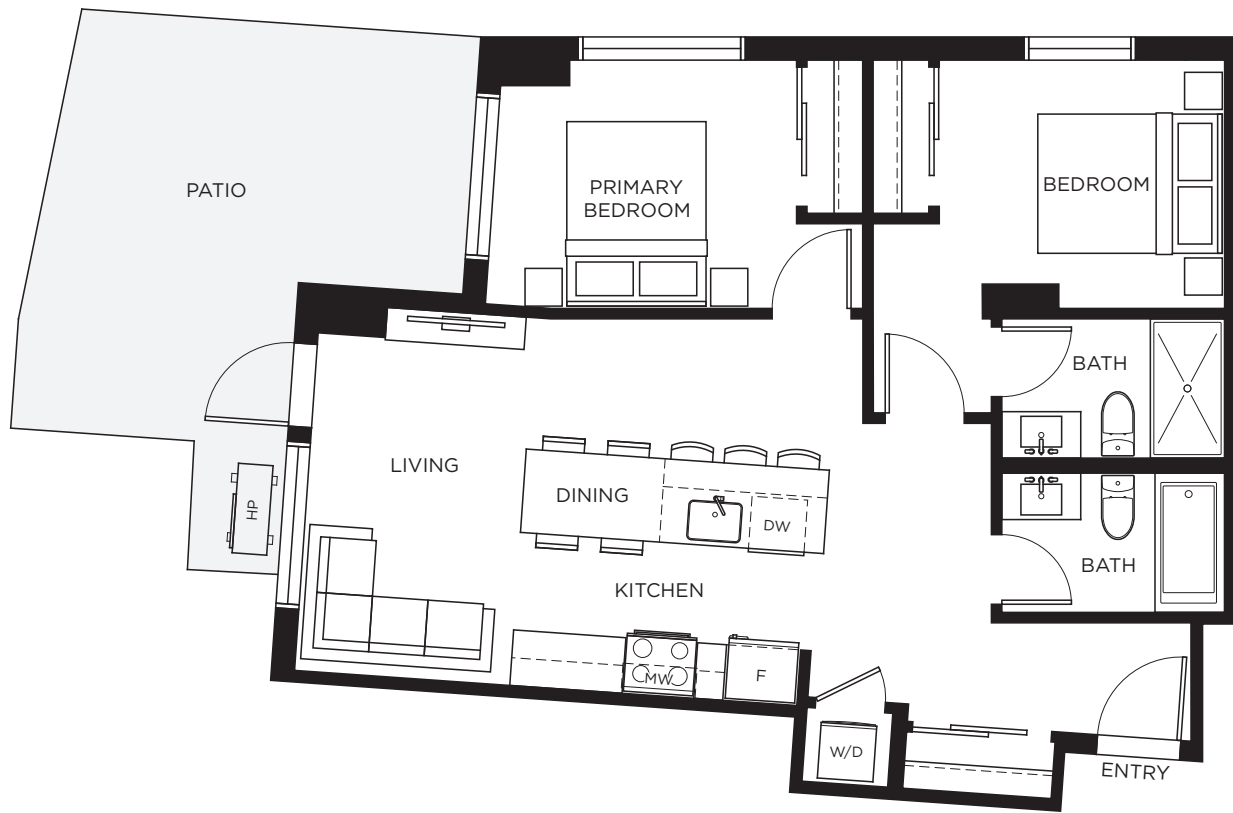


This is not an offering for sale. Any such offering must be made by way of disclosure statement. In our continuing effort to improve the product, the developer reserves the right to modify plans specifications, features, and prices without notice. Materials may be substituted with equivalent or better if required. All dimensions and sizes are approximate and actual final measurements may vary. E. & O.E. The contents of this are not intended to solicit interest from any non-Canadian individual or entity as defined by the Prohibition on the Purchase of Residential Property by Non-Canadians Act.

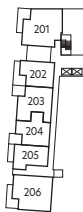
# D12

2 BED, 2 BATH  
 INTERIOR 786 SF  
 EXTERIOR 226 SF  
 TOTAL 1,012 SF

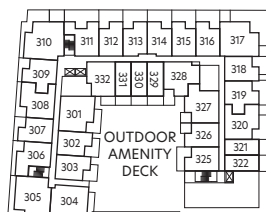
 **RIVERVIEW**  
 AT SOKANA



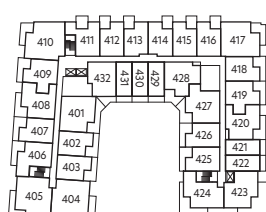
LEVEL 1



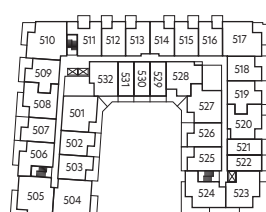
LEVEL 2



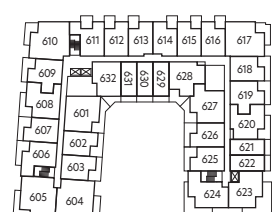
LEVEL 3



LEVEL 4



LEVEL 5



LEVEL 6



This is not an offering for sale. Any such offering must be made by way of disclosure statement. In our continuing effort to improve the product, the developer reserves the right to modify plans specifications, features, and prices without notice. Materials may be substituted with equivalent or better if required. All dimensions and sizes are approximate and actual final measurements may vary. E. & O.E. The contents of this are not intended to solicit interest from any non-Canadian individual or entity as defined by the Prohibition on the Purchase of Residential Property by Non-Canadians Act.

# E4

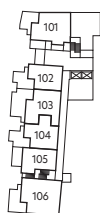
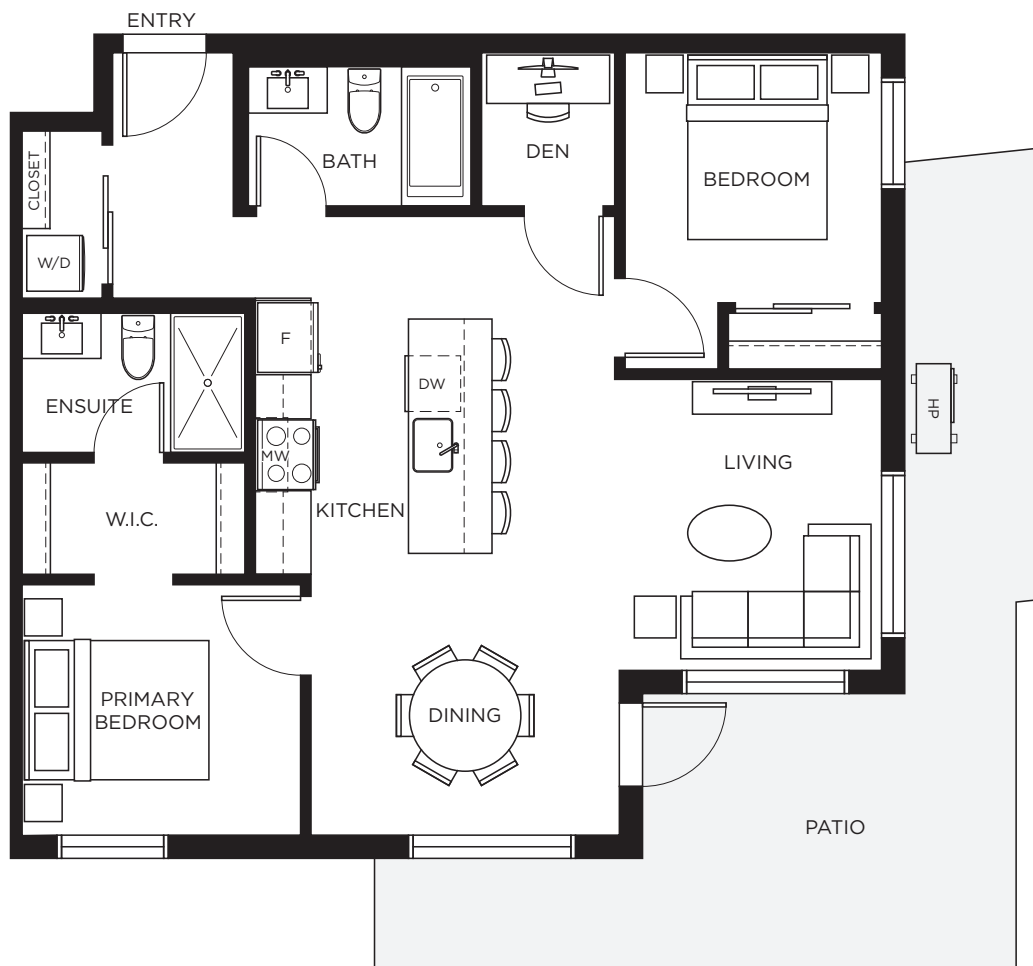
2 BED + DEN, 2 BATH

INTERIOR 850 SF

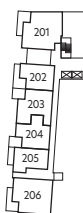
EXTERIOR 334 SF

TOTAL 1,184 SF

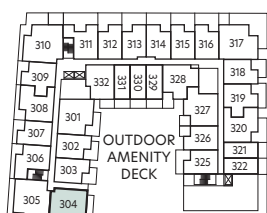
**RIVERVIEW**  
AT SOKANA



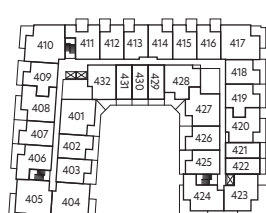
LEVEL 1



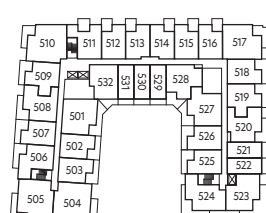
LEVEL 2



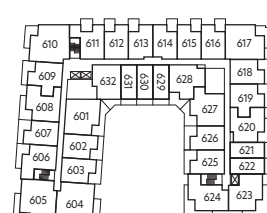
LEVEL 3



LEVEL 4



LEVEL 5



LEVEL 6

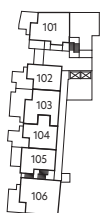
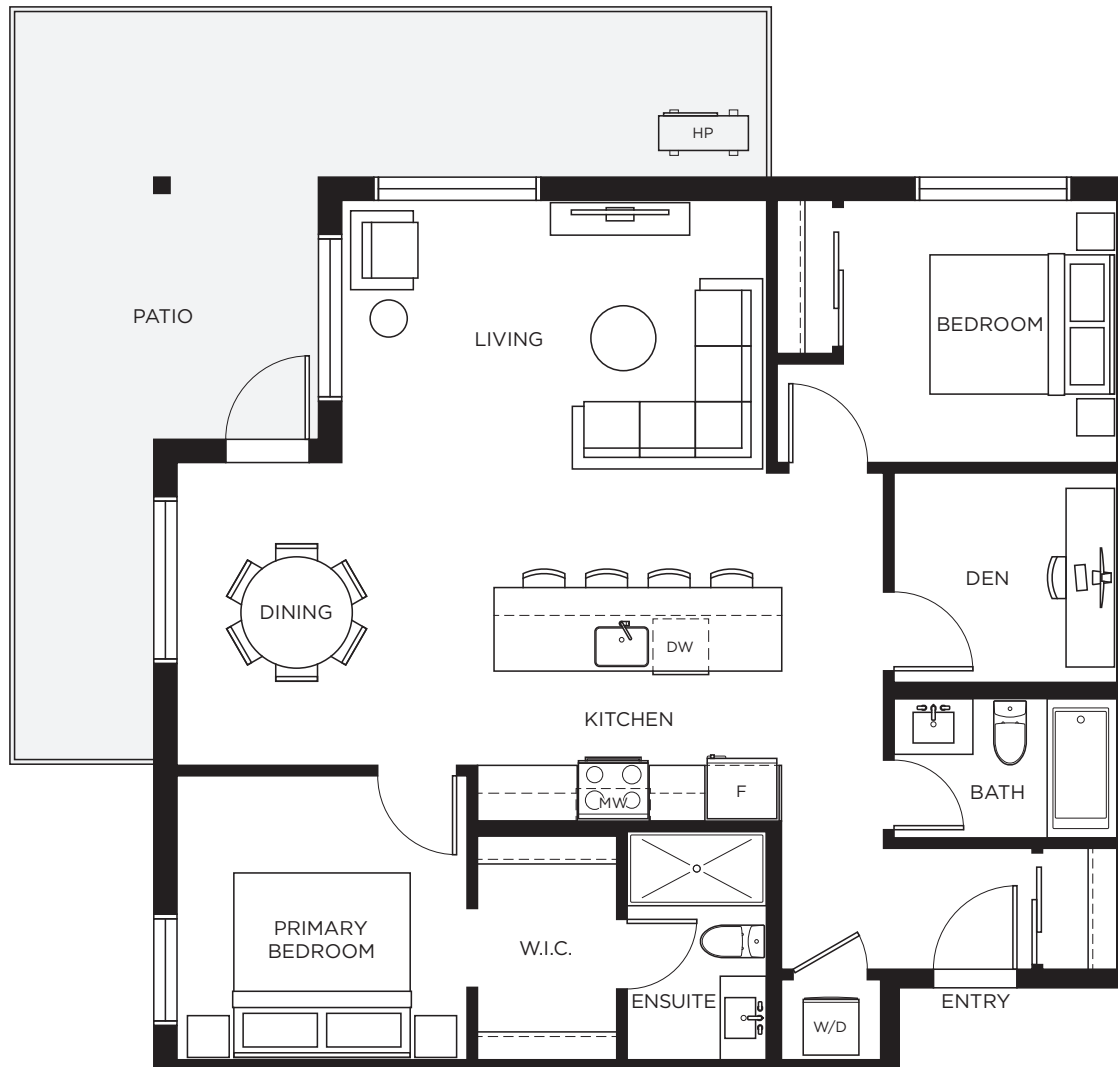


This is not an offering for sale. Any such offering must be made by way of disclosure statement. In our continuing effort to improve the product, the developer reserves the right to modify plans specifications, features, and prices without notice. Materials may be substituted with equivalent or better if required. All dimensions and sizes are approximate and actual final measurements may vary. E. & O.E. The contents of this are not intended to solicit interest from any non-Canadian individual or entity as defined by the Prohibition on the Purchase of Residential Property by Non-Canadians Act.

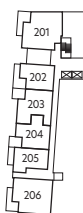
# E6

2 BED + DEN, 2 BATH  
 INTERIOR 1,023 SF  
 EXTERIOR 344 SF  
 TOTAL 1,367 SF

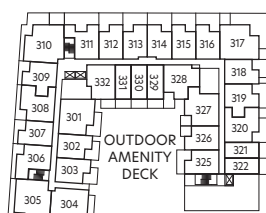
 **RIVERVIEW**  
 AT SOKANA



LEVEL 1



LEVEL 2



LEVEL 3



LEVEL 4



LEVEL 5



LEVEL 6



This is not an offering for sale. Any such offering must be made by way of disclosure statement. In our continuing effort to improve the product, the developer reserves the right to modify plans specifications, features, and prices without notice. Materials may be substituted with equivalent or better if required. All dimensions and sizes are approximate and actual final measurements may vary. E. & O.E. The contents of this are not intended to solicit interest from any non-Canadian individual or entity as defined by the Prohibition on the Purchase of Residential Property by Non-Canadians Act.

# E7

2 BED + DEN, 2 BATH  
 INTERIOR 915 SF  
 EXTERIOR 172-603 SF  
 TOTAL 1,087- 1,518 SF

**RIVERVIEW**  
 AT SOKANA

Patio sizes for specific homes may vary,  
 please see your sales manager for more information.



This is not an offering for sale. Any such offering must be made by way of disclosure statement. In our continuing effort to improve the product, the developer reserves the right to modify plans specifications, features, and prices without notice. Materials may be substituted with equivalent or better if required. All dimensions and sizes are approximate and actual final measurements may vary. E. & O.E. The contents of this are not intended to solicit interest from any non-Canadian individual or entity as defined by the Prohibition on the Purchase of Residential Property by Non-Canadians Act.

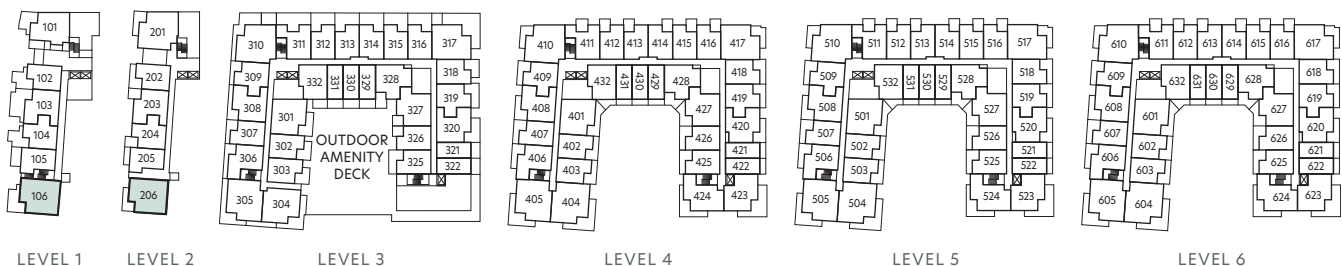
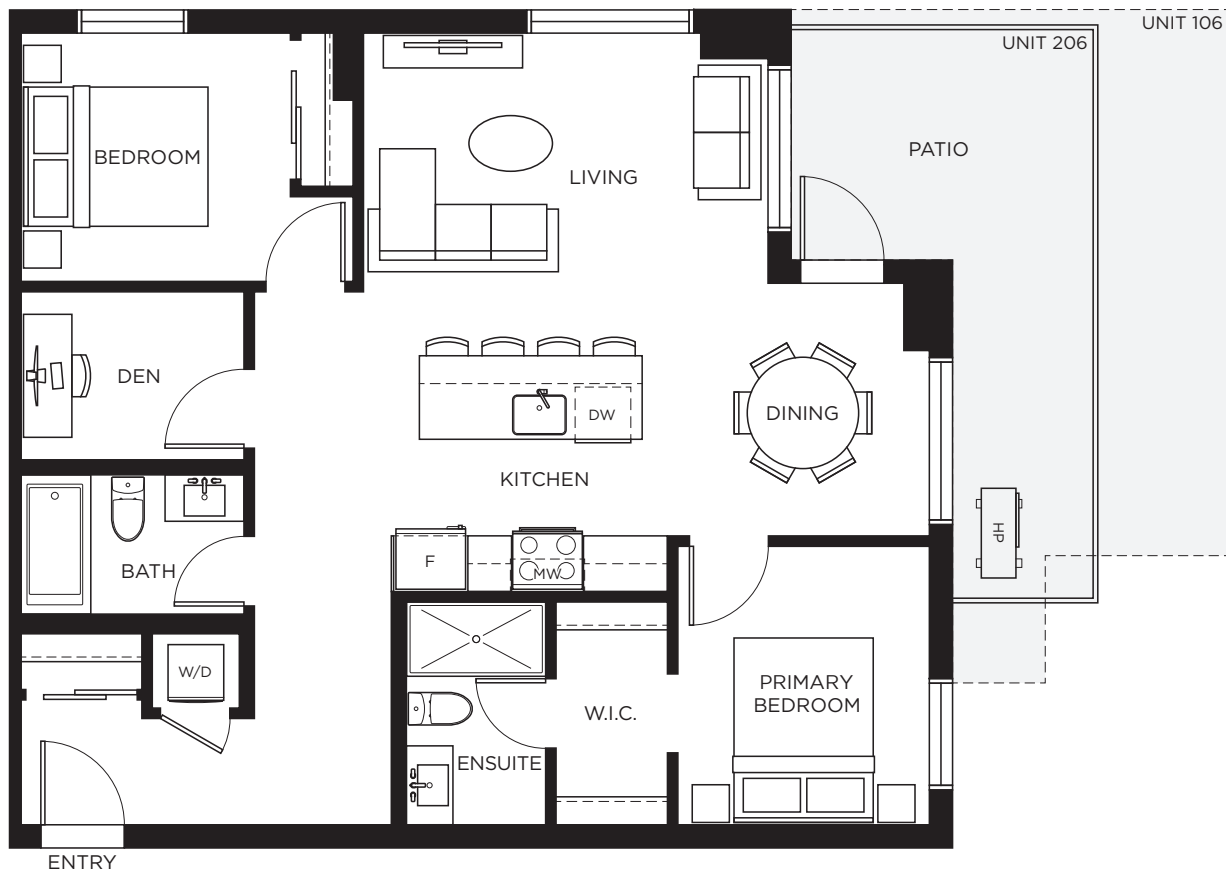


# E8

2 BED + DEN, 2 BATH  
 INTERIOR 947 SF  
 EXTERIOR 172-269 SF  
 TOTAL 1,119 - 1,216 SF

**RIVERVIEW**  
 AT SOKANA

Patio sizes for specific homes may vary,  
 please see your sales manager for more information.



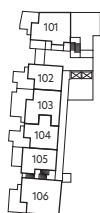
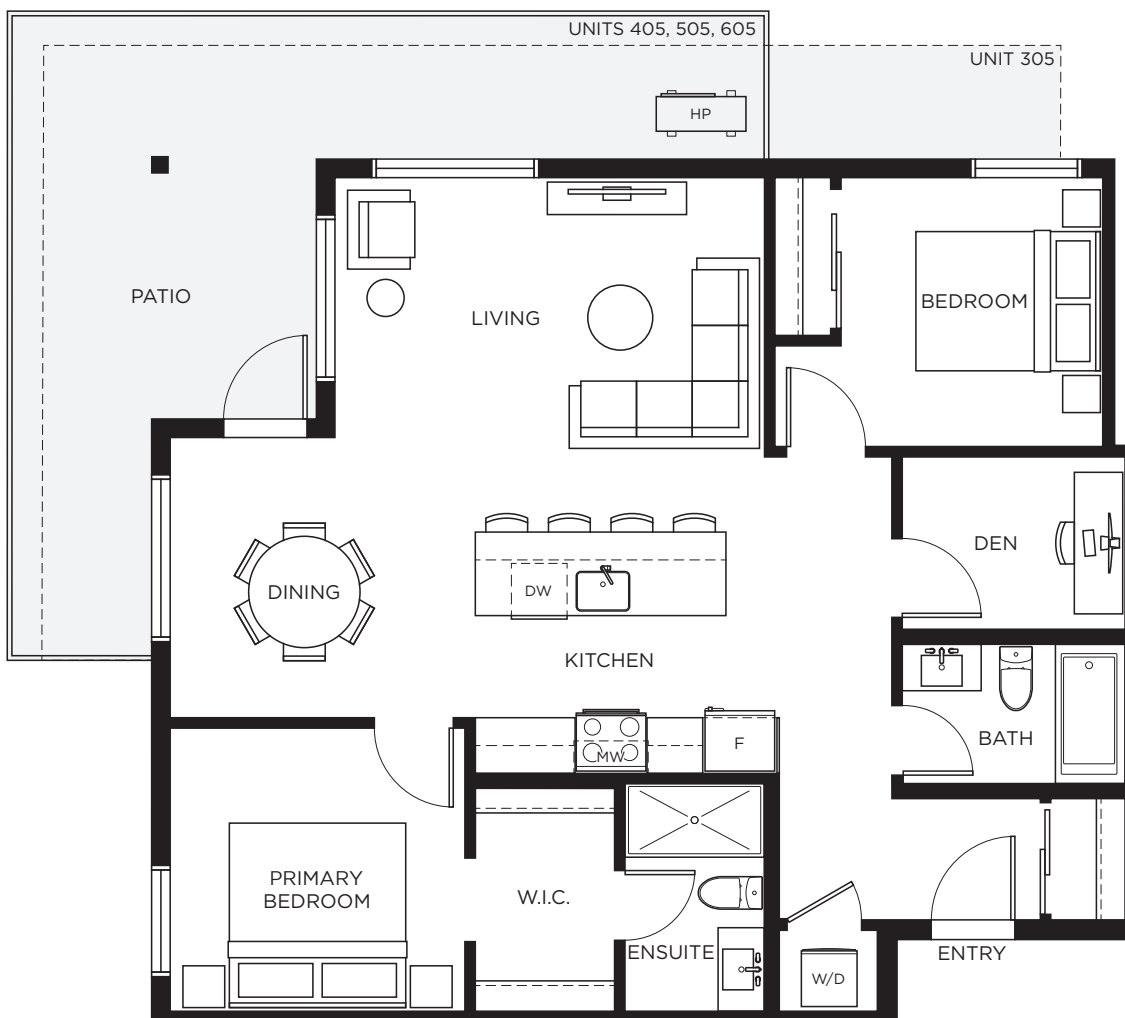
This is not an offering for sale. Any such offering must be made by way of disclosure statement. In our continuing effort to improve the product, the developer reserves the right to modify plans specifications, features, and prices without notice. Materials may be substituted with equivalent or better if required. All dimensions and sizes are approximate and actual final measurements may vary. E. & O.E. The contents of this are not intended to solicit interest from any non-Canadian individual or entity as defined by the Prohibition on the Purchase of Residential Property by Non-Canadians Act.

# E9

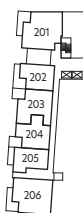
2 BED + DEN, 2 BATH  
 INTERIOR 980 SF  
 EXTERIOR 301-409 SF  
 TOTAL 1,281-1,389 SF

**RIVERVIEW**  
 AT SOKANA

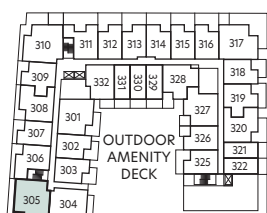
Patio sizes for specific homes may vary,  
 please see your sales manager for more information.



LEVEL 1



LEVEL 2



LEVEL 3



LEVEL 4



LEVEL 5



LEVEL 6



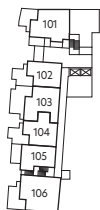
This is not an offering for sale. Any such offering must be made by way of disclosure statement. In our continuing effort to improve the product, the developer reserves the right to modify plans specifications, features, and prices without notice. Materials may be substituted with equivalent or better if required. All dimensions and sizes are approximate and actual final measurements may vary. E. & O.E. The contents of this are not intended to solicit interest from any non-Canadian individual or entity as defined by the Prohibition on the Purchase of Residential Property by Non-Canadians Act.

# E10

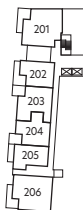
2 BED + DEN, 2 BATH  
 INTERIOR 1,001 SF  
 EXTERIOR 161-413 SF  
 TOTAL 1,162-1,414 SF

**RIVERVIEW**  
 AT SOKANA

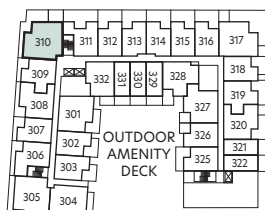
Patio sizes for specific homes may vary,  
 please see your sales manager for more information.



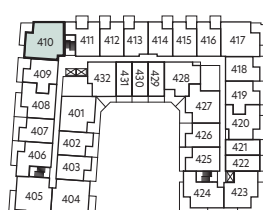
LEVEL 1



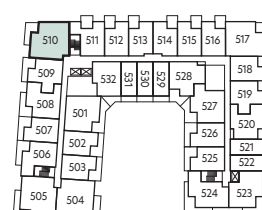
LEVEL 2



LEVEL 3



LEVEL 4



LEVEL 5



LEVEL 6



This is not an offering for sale. Any such offering must be made by way of disclosure statement. In our continuing effort to improve the product, the developer reserves the right to modify plans specifications, features, and prices without notice. Materials may be substituted with equivalent or better if required. All dimensions and sizes are approximate and actual final measurements may vary. E. & O.E. The contents of this are not intended to solicit interest from any non-Canadian individual or entity as defined by the Prohibition on the Purchase of Residential Property by Non-Canadians Act.

# F1

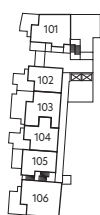
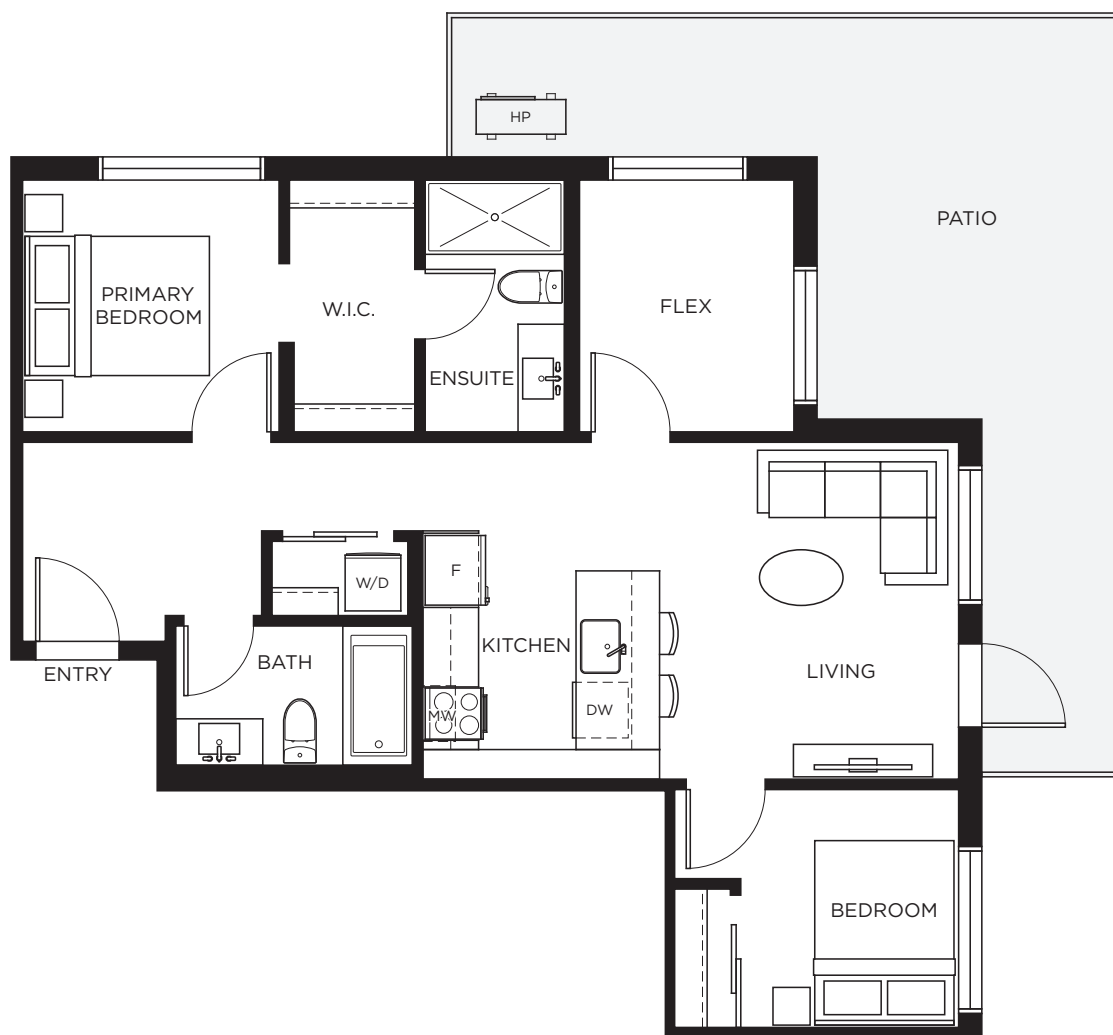
2 BED + FLEX, 2 BATH

INTERIOR 786 SF

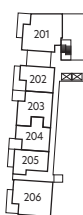
EXTERIOR 312 SF

TOTAL 1,098 SF

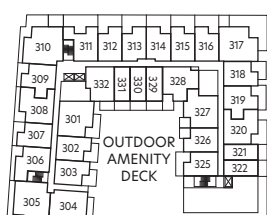
 **RIVERVIEW**  
AT SOKANA



LEVEL 1



LEVEL 2



LEVEL 3



LEVEL 4



LEVEL 5



LEVEL 6



This is not an offering for sale. Any such offering must be made by way of disclosure statement. In our continuing effort to improve the product, the developer reserves the right to modify plans specifications, features, and prices without notice. Materials may be substituted with equivalent or better if required. All dimensions and sizes are approximate and actual final measurements may vary. E. & O.E. The contents of this are not intended to solicit interest from any non-Canadian individual or entity as defined by the Prohibition on the Purchase of Residential Property by Non-Canadians Act.

# F2

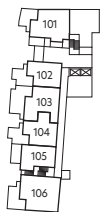
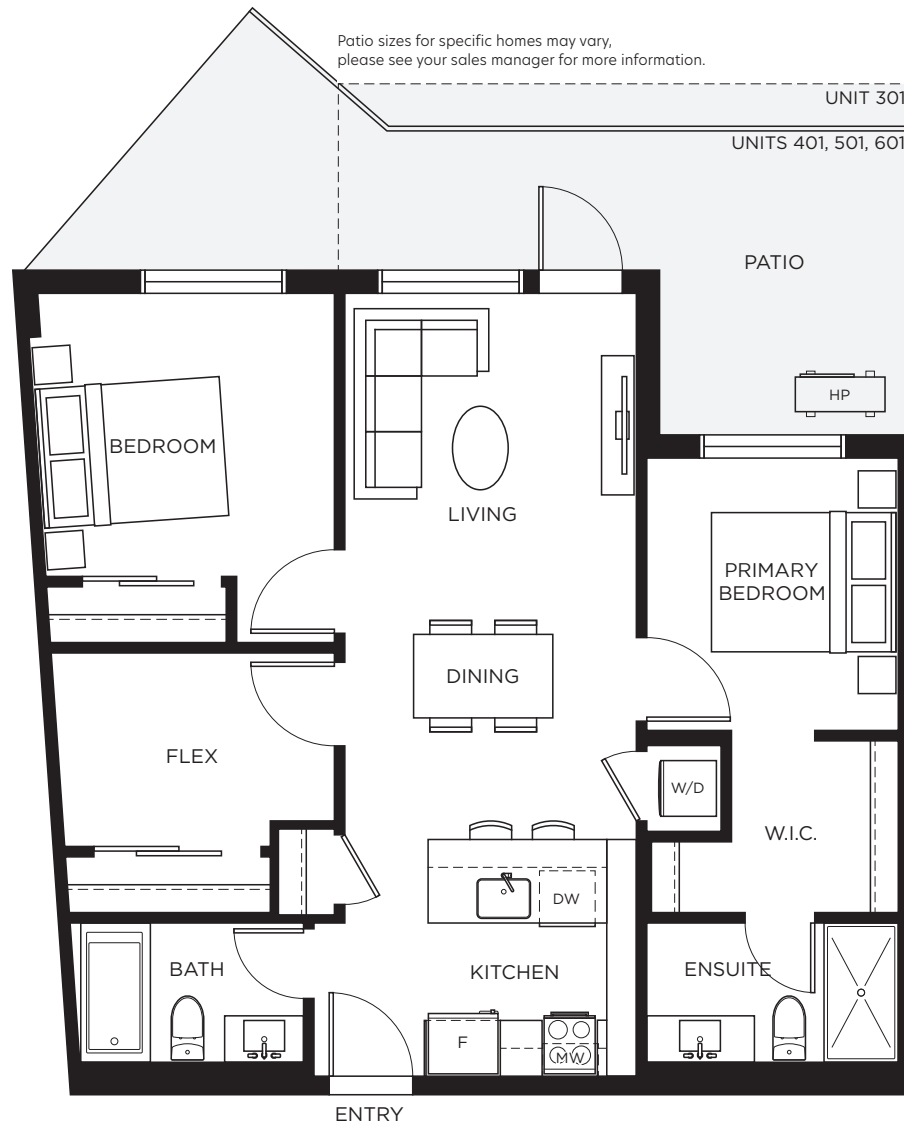
2 BED + FLEX, 2 BATH

INTERIOR 840 SF

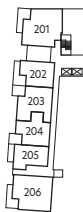
EXTERIOR 205-237 SF

TOTAL 1,045-1,077 SF

 **RIVERVIEW**  
AT SOKANA



LEVEL 1



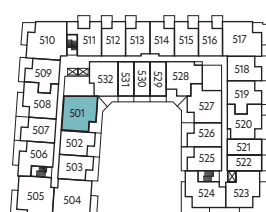
LEVEL 2



LEVEL 3



LEVEL 4



LEVEL 5



LEVEL 6

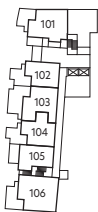
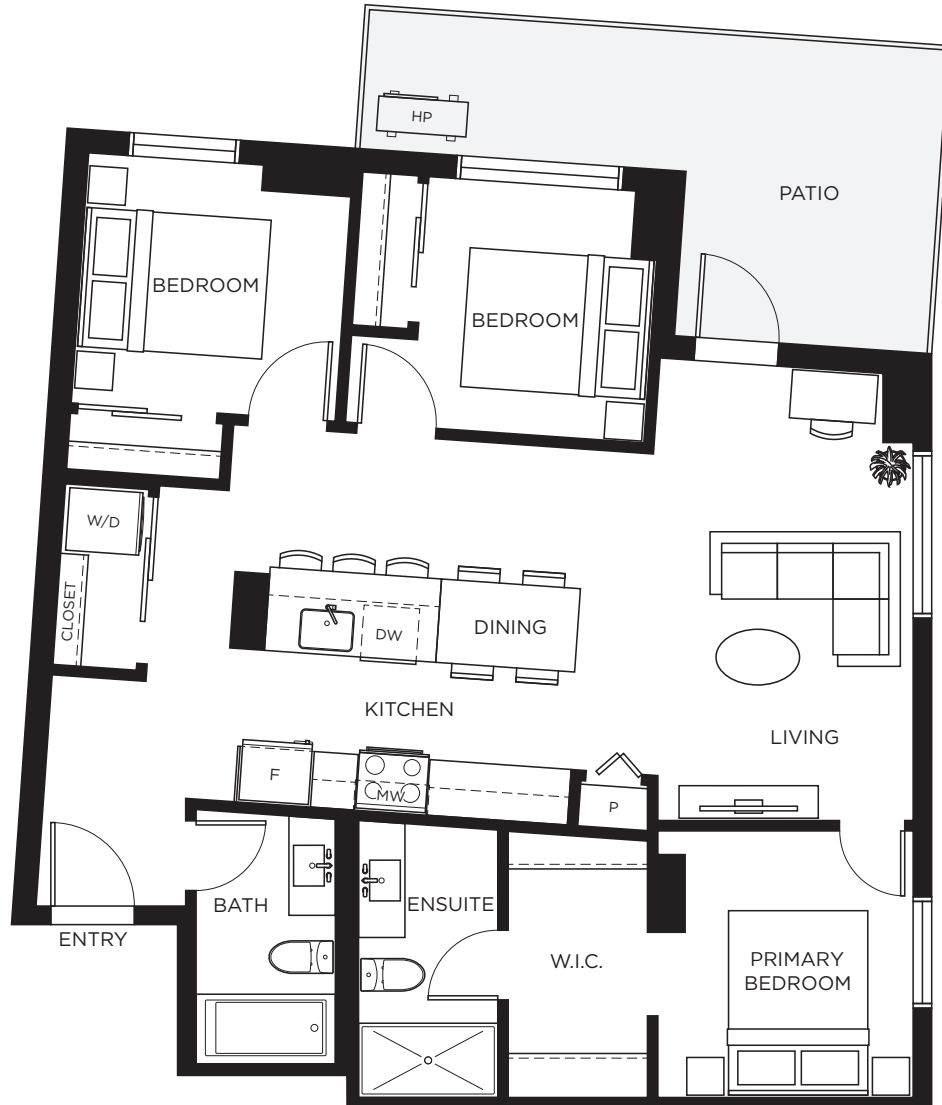


This is not an offering for sale. Any such offering must be made by way of disclosure statement. In our continuing effort to improve the product, the developer reserves the right to modify plans specifications, features, and prices without notice. Materials may be substituted with equivalent or better if required. All dimensions and sizes are approximate and actual final measurements may vary. E. & O.E. The contents of this are not intended to solicit interest from any non-Canadian individual or entity as defined by the Prohibition on the Purchase of Residential Property by Non-Canadians Act.

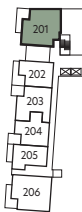
# G2

3 BED, 2 BATH  
 INTERIOR 969 SF  
 EXTERIOR 172 SF  
 TOTAL 1,141 SF

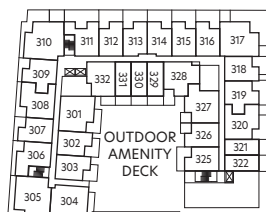
**RIVERVIEW**  
 AT SOKANA



LEVEL 1



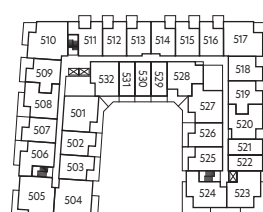
LEVEL 2



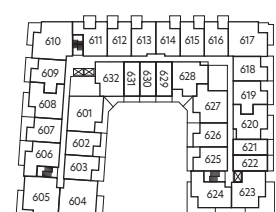
LEVEL 3



LEVEL 4



LEVEL 5



LEVEL 6



This is not an offering for sale. Any such offering must be made by way of disclosure statement. In our continuing effort to improve the product, the developer reserves the right to modify plans specifications, features, and prices without notice. Materials may be substituted with equivalent or better if required. All dimensions and sizes are approximate and actual final measurements may vary. E. & O.E. The contents of this are not intended to solicit interest from any non-Canadian individual or entity as defined by the Prohibition on the Purchase of Residential Property by Non-Canadians Act.