

RESIDENCES ON

KEEWATIN

PARK



SOPHISTICATED BY DESIGN

Nestled on a tree-lined corner of midtown, Keewatin is a new community of 36 exquisite luxury suites, ideally situated by the revitalized urban core of Yonge & Eglinton, the charming shops of Mt. Pleasant, plus the delightful Sherwood Park. Keewatin's exceptional location is equalled only by its exceptional design.

With a distinctly contemporary exterior created to enhance and reflect the character of the area that surrounds it, Keewatin proves that a modern approach can mesh perfectly with the traditional and in the process bring a new kind of luxury to one of Toronto's most established and desirable neighbourhoods.





SUBTLE YET SUBLIME

With its striking white-on-white palette of exterior textures, Keewatin is an architectural standout in the area. Its gently shifting pattern of projecting bays plays off the traditional elements of the homes that surround it while emphasizing each individual unit within. Engaging design, exquisite detailing, and exceptional luxury.

Set amidst this quiet, leafy neighbourhood, the Keewatin site itself boasts its own complement of mature trees; the element of nature is key to the overall design. Beautifully landscaped grounds build on the greenery that's all around. Every Keewatin residence comes with a sprawling outdoor space, a terrace or rooftop terrace, or a private garden.

Enjoy an abundance of natural green space and nearby parkland, combined with the best that the city has to offer: they are what make Keewatin the natural choice for homeowners who want it all.

FREED

MT. PLEASANT
AND EGLINTON



LUXURY RESIDENCES

Clean contemporary lines create the framework for these spacious interiors. In fact, maximizing space is the primary focus. As light pours in over the minimal colour palette, creating a sense of openness and calm, the rooms emphasize opulence and transform the traditional suite into a luxury home.



INDOOR/OUTDOOR LIVING

Nothing is left to chance with this strident modern design. The open concept layout creates both functionality and flow, and the large floor-to-ceiling windows provide more than just light; they exemplify the very best that is indoor/outdoor living.



BACKYARD OASIS

Come home to the perfect backyard oasis. With designated spaces for entertaining and an abundance of green space, you'll enjoy a functional yet relaxing piece of paradise. This airy outdoor space is a great place to unwind and spend quality time with your guests.





PRIVATE ROOFTOPS

Outdoor space is an uncommon amenity this close to Yonge & Eglinton. Yet each Keewatin home offers not only a measure of an outdoor living area but also an expansive and beautifully appointed exterior space that's as thoughtfully designed as the rooms within.



WARM AND WELCOMING



SLEEK AND SOPHISTICATED



ON THE PARK

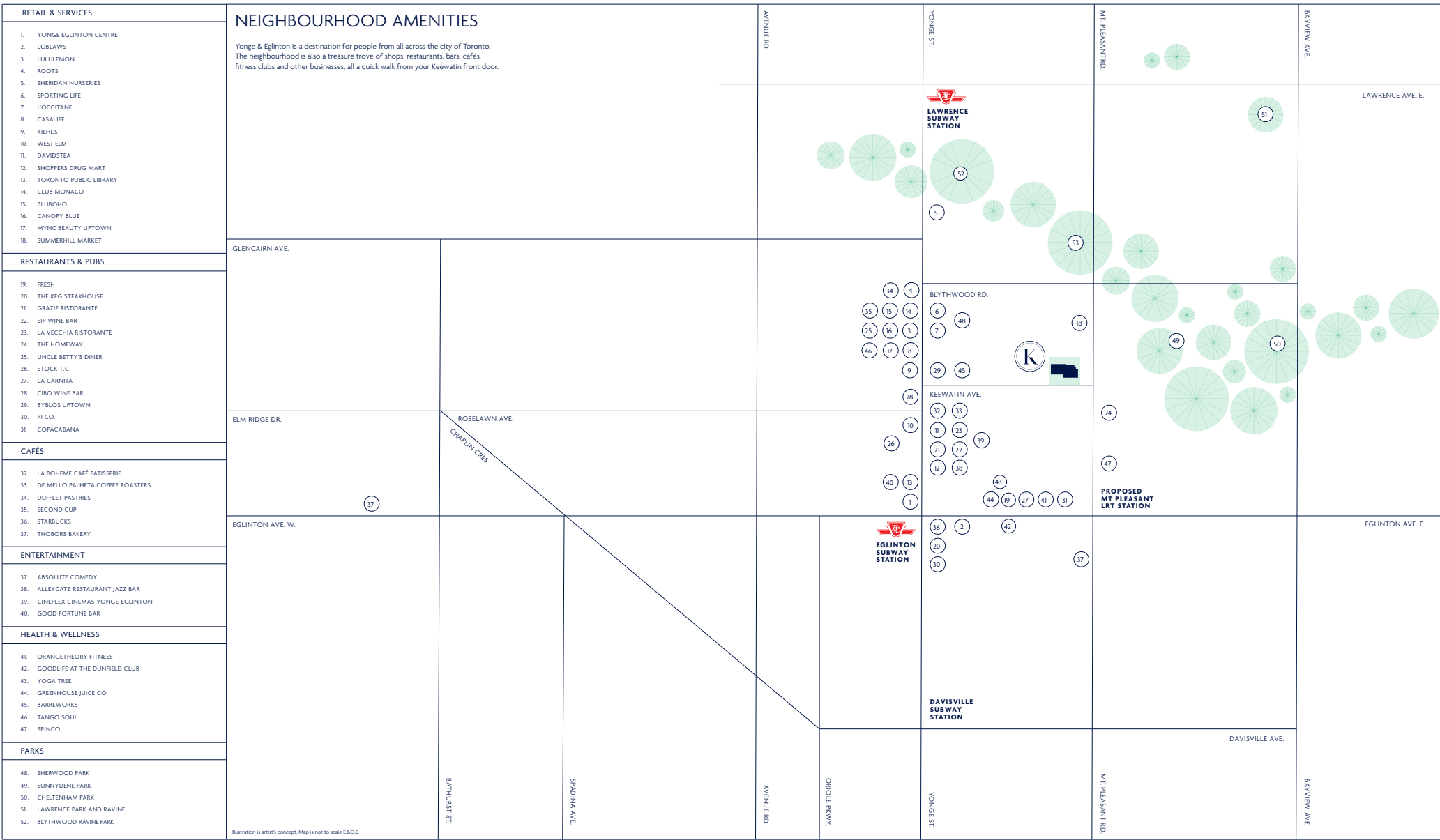


Illustration is artist's concept. Map is not to scale E.&O.E.





EXPLORE SHERWOOD PARK

It's easy to escape to the more public realm of Sherwood Park, a lush nearby 16-hectare green space that features two wading pools, walking and running trails, picnic tables and a large playground. Mostly wooded, the park provides the perfect setting to commune with nature and enjoy the contrast between it and the city just outside its gates.



YONGE & EVERYTHING

One of Toronto's most vibrant intersections—Yonge & Eglinton—lies just steps from your Keewatin home. Immerse yourself in emerging arts, culture and theatre while enjoying the best fine dining the city has to offer. Yonge & Eglinton truly is a city within a city and makes midtown the new downtown for the lucky residents who live, shop, eat and work within its orbit.

FREED

MT. PLEASANT
AND EGLINTON



UPSCALE EATS

Make the most of all the urban shopping that's within your reach. Whether you're picking up produce at the neighbourhood grocery store or hosting an important dinner party, you'll have easy access to hidden city treasures around every corner.



FREED

MT. PLEASANT
AND EGLINTON



Fresh

AN AIR OF ELEGANCE



Byblos

DESIGNED TO YOUR DESIRES

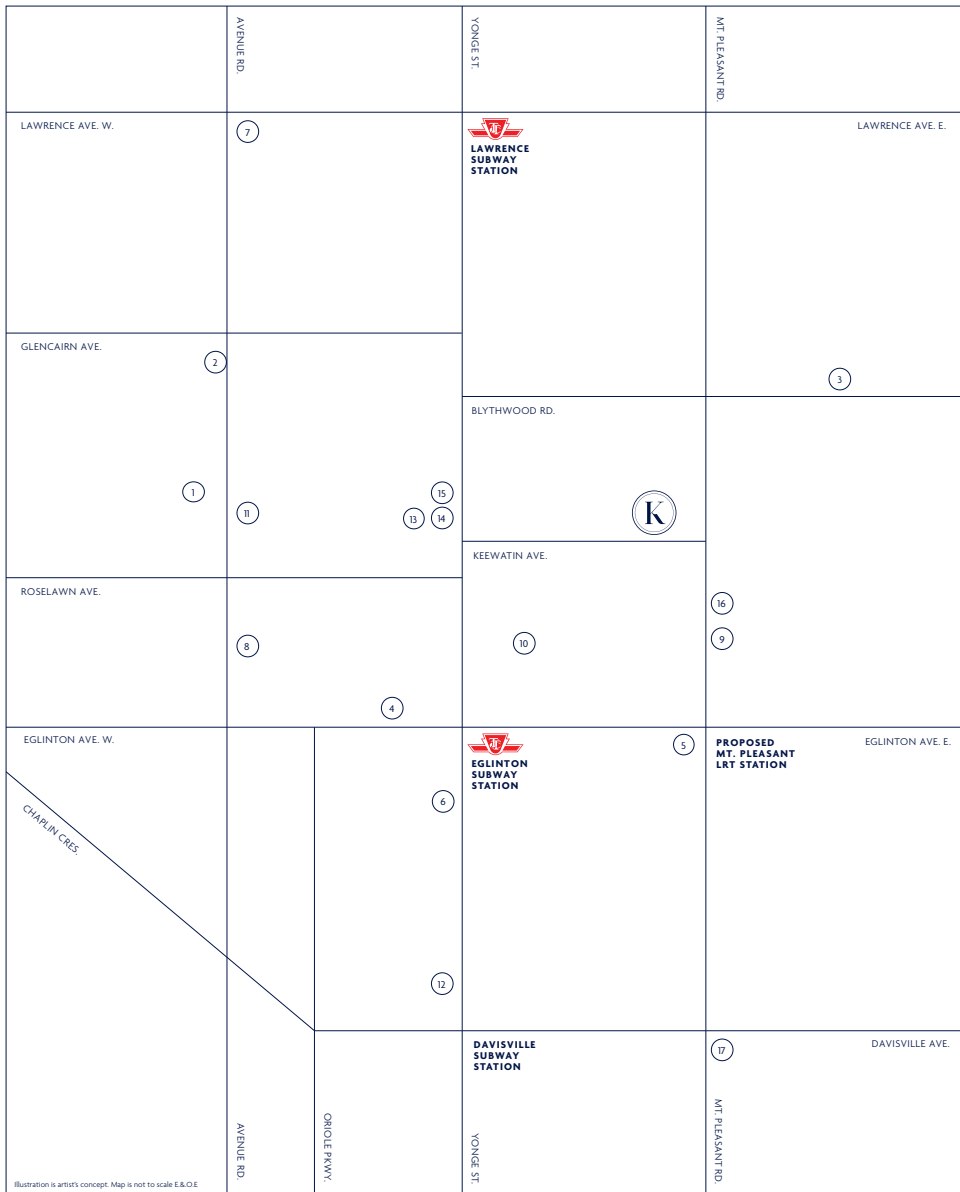


Illustration is artist's concept. Map is not to scale E.&O.E



YONGE & EDUCATED

For kids of all ages and adults too, the area around Keewatin is a hub for learning. From daycares and kindergartens to adult education, everything you need is centred close to home.

SCHOOLS

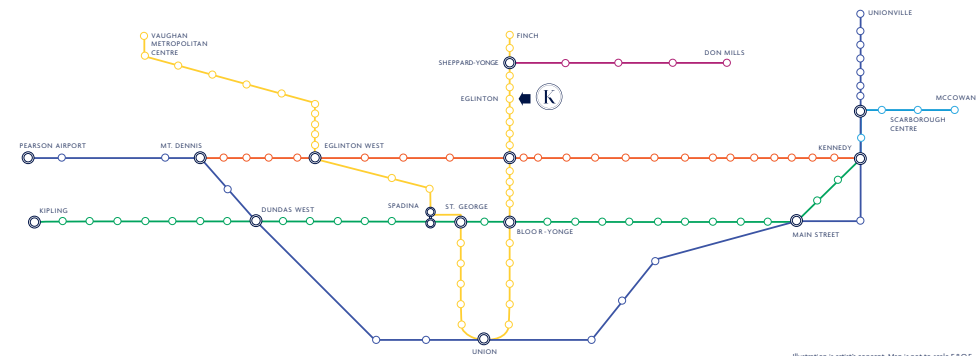
1. ALLENBY JUNIOR PUBLIC SCHOOL
2. THE BEEZ KNEEZ NURSERY SCHOOL
3. BLYTHWOOD JUNIOR PUBLIC SCHOOL
4. EC TORONTO ENGLISH SCHOOL AND EC TORONTO 30+ (ADULT ENGLISH CENTRE)
5. EGLINTON JUNIOR PUBLIC SCHOOL
6. HANSA LANGUAGE CENTRE
7. HAVERGAL COLLEGE
8. MARSHALL MCLUHAN CATHOLIC SECONDARY SCHOOL
9. NORTHERN SECONDARY SCHOOL
10. NORTH TORONTO COLLEGIATE
11. NORTH TORONTO EARLY YEARS LEARNING CENTRE
12. ROYAL CANADIAN INSTITUTE OF INTERNATIONAL STUDIES
13. ST. CLEMENT'S EARLY LEARNING SCHOOL
14. ST. CLEMENT'S SCHOOL
15. UPPER YONGE VILLAGE DAYCARE CENTRE
16. MANOR MONTESSORI SCHOOL
17. GREENWOOD COLLEGE SCHOOL



A HUB FOR EVERYTHING, INCLUDING TRANSIT

The Yonge & Eglinton area is a world unto itself, providing everything local residents could ever want or need. But when work or play calls you to head to other parts of the city, it's good to know you're well connected to the outside world as well. In fact, the city's most anticipated new transit link—the Eglinton Crosstown LRT—will be in operation here soon, providing you with easy access to countless shopping and dining choices, both east and west of Yonge & Eg. It's just one more transportation option for locals, who are already well served by the TTC's Line 1 subway, accessible at Eglinton Station, located less than a 15-minute walk from Keewatin.

Currently, there are four buses running along Eglinton Ave. E. that will take you either into the station or farther east, depending on your preference. Both the Bayview and Mount Pleasant buses service the north /south corridors and are just a quick walk from your new home.



walkscore: 99
transit score: 99

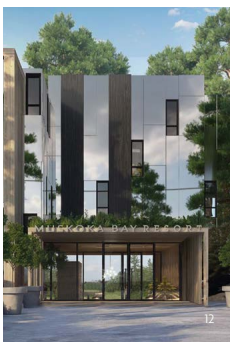
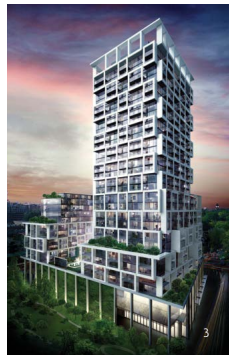
Illustration is artist's concept. Map is not to scale E&OE.

- PROPOSED SMART TRACK
- EGLINTON CROSSTOWN LRT (LINE 5)
- SHEPPARD (LINE 4)
- YONGE-UNIVERSITY (LINE 1)
- BLOOR-DANFORTH (LINE 2)
- SCARBOROUGH LRT (LINE 3)



FREED PROJECTS

- 1. ANX
- 2. SIXTY COLBOURNE
- 3. ART SHOPPE
- 4. 150 REDPATH
- 5. 155 REDPATH
- 6. 346 DAVENPORT
- 7. 500 WELLINGTON
- 8. FASHION HOUSE
- 9. 621 KING STREET
- 10. 455 ADELAIDE
- 11. MUSKOKA BAY RESORT
- 12. MUSKOKA BAY RESORT



freed

For over 25 years, Freed Developments has been changing the face of Toronto with its unique brand of design-based development. Freed's portfolio includes luxurious modern condominium towers, hospitality ventures, resort communities and commercial spaces, all of which have become homes to residents and some of the city's best retail tenants alike. The company has been the driving force behind the remarkable transformation of King Street West, the Dupont strip and Yonge & Eglinton. A Freed property is more than just a building. It's a lifestyle hub, a place where people can work and play in buildings that make a true design statement.



Past and future projects represent a segment of Freed's development portfolio. Illustrations are artist's concept.

freed



All specifications and materials are subject to change without notice. Vendor reserves the right to substitute other products and materials in any listed schedules with those of equal or better quality. Illustrations are artist's concept. E.S.O.E.