



DiamondCorp

AUSTIN BIRCH

# Q Tower Preview



DiamondCorp

AUSTIN BIRCH



An aerial, black and white photograph of the Toronto skyline. The CN Tower is prominent on the left. A dense cluster of skyscrapers is visible in the center and right. A large, semi-circular stadium is in the lower-left foreground. A bright red, semi-transparent skyscraper is superimposed in the center of the image, extending from the water level up to the top of the frame. The text is overlaid in the bottom-left corner.

**THE MOST EXCITING NEW PROJECT  
COMING TO DOWNTOWN TORONTO.  
FOREVER BECOMING A PART OF THE MOST  
PHOTOGRAPHED IMAGE OF A NATION!**



# HISTORY & VISION

Two of Canada’s leading and award-winning real estate development firms, joining forces to proudly redefine Toronto’s waterfront skyline!



BISHA, TORONTO



THE YORKVILLE, TORONTO



FOUR SEASONS, TORONTO



CELESTE, TORONTO



THE WELL, TORONTO



BRIGHTWATER, TORONTO

DiamondCorp



An aerial photograph of Toronto, Canada, showing the city skyline and waterfront. The CN Tower is prominent on the left. The foreground shows a mix of industrial and commercial buildings, parking lots, and a marina. The text "PERFECTLY LOCATED 50 YEARS AGO" is overlaid in white, with "50 YEARS AGO" in bold. Below it, a paragraph of text explains the historical significance of the location.

# PERFECTLY LOCATED **50 YEARS AGO**

The federal government identified this site, 50 years ago, as the most central location amidst Toronto's future landmarks with immediate access to the waterfront.





# PERFECTLY **LOCATED TODAY**

The last piece of real estate that can be developed  
in the heart of Toronto's landmark locations.



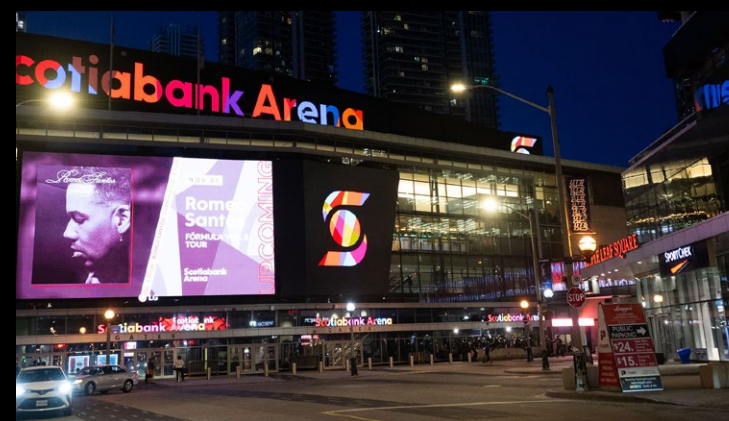


AT THE HEART OF **THE CITY**





AT THE HEART OF **THE CITY**





5 MINUTE WALK  
TO EVERYTHING

100  
TRANSIT SCORE

99  
WALK SCORE

87  
BIKE SCORE





# PROJECT TEAM

## WALLMANARCHITECTS



10 YORK



M2M



LIBERTY MARKET TOWER

Multi-award-winning architects and designers to execute the vision;



LAKESIDE RETREAT



VITA ON THE LAKE



SCALA





# A ROYAL COLLABORATION

Iconic, inspiring, and distinctive.

## Q TOWER x MICHAEL MOEBIUS

In homage to this majestic expression in modern elegance, Lifetime Developments and DiamondCorp are thrilled to announce our esteemed collaboration with one of the most recognized contemporary artists in the world – Michael Moebius. Known for his hyper-realistic illustrative portraits of celebrities blowing bubblegum, we are privileged to showcase his most iconic works throughout the spaces at Q Tower.



ARTIST  
**MICHAEL  
MOEBIUS**



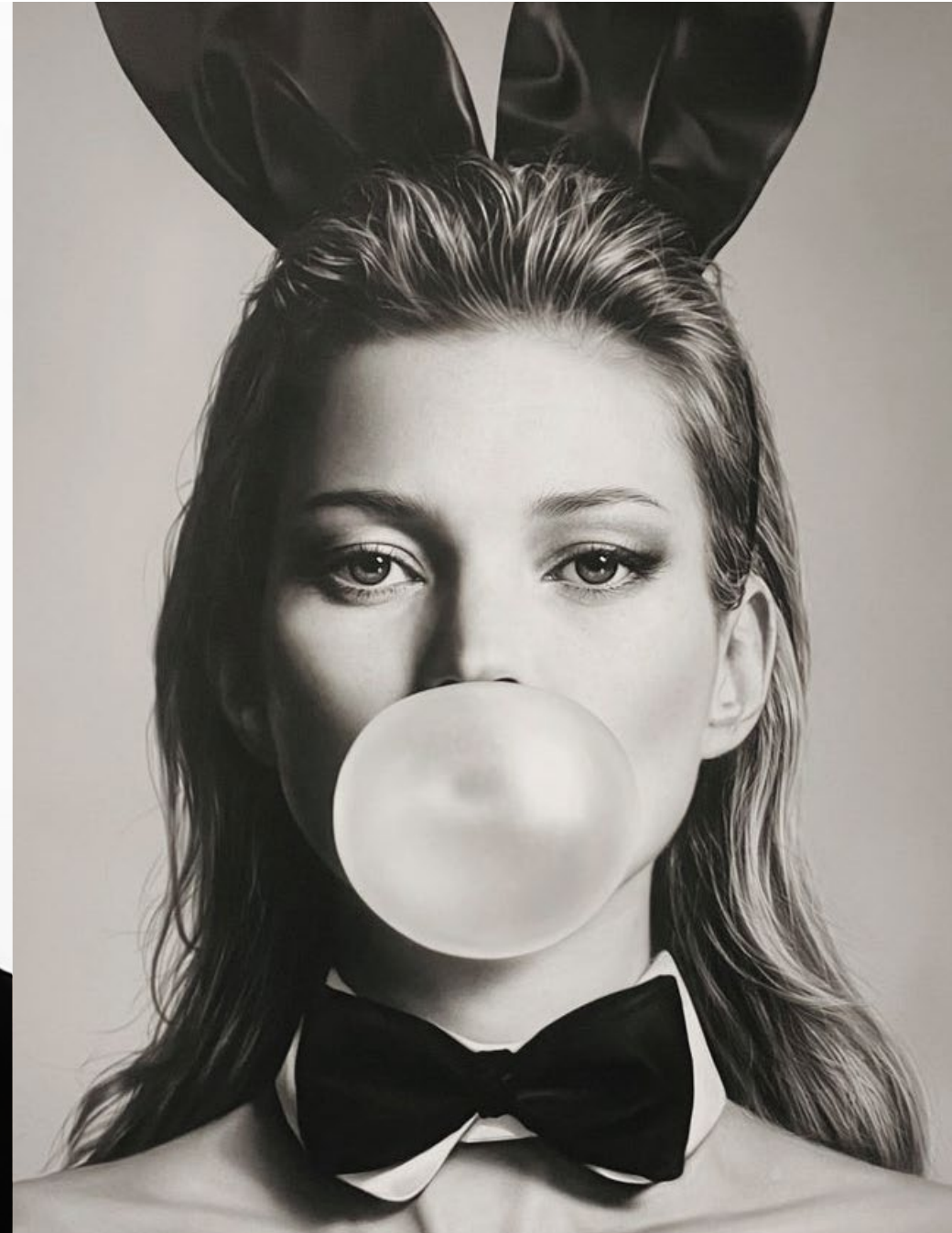
Michael Moebius' iconic artwork of celebrity figures



Queen Elizabeth II



David Bowie



Kate Moss



**Q  
TOWER**





# BUILDING **HIGHLIGHTS**

- **60 STOREYS**
- **900 SUITES ALL WITH OUTDOOR SPACE**
- **OVER 27,000 SQ FT OF WORLD CLASS AMENITIES ACROSS 3 FLOORS**
- **24-HOUR CONCIERGE**
- **PORT COCHÈRE COVERED ARRIVAL**
- **9 FT CEILINGS**
- **ICONIC WORLD CLASS ARTWORK THROUGHOUT**
- **BUILDING COMPLETION 2030!**

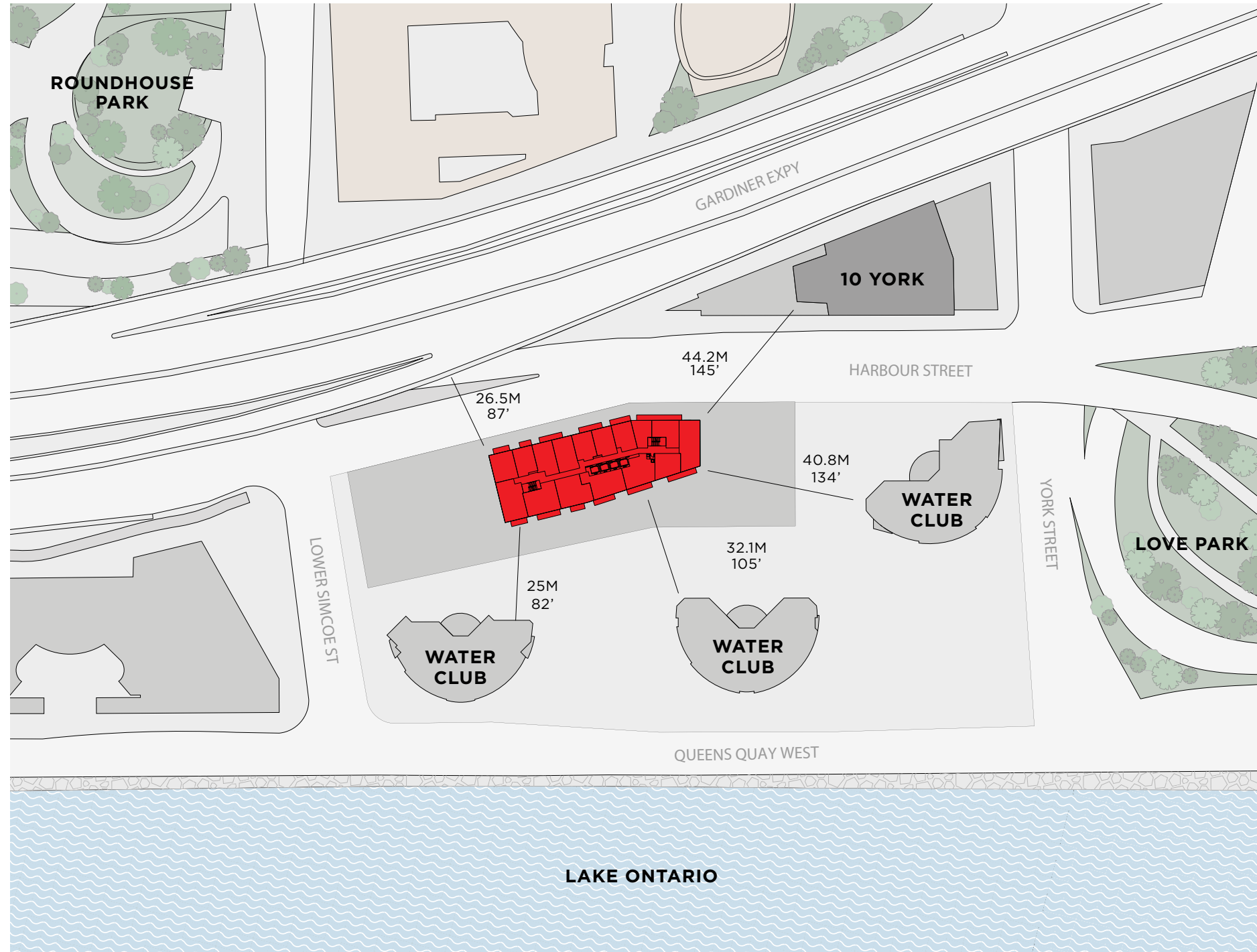




ROGERS  
CENTRE

CN TOWER

RIPLEYS  
AQUARIUM



## THE TOWER FLOORS **7-60**

- Perfectly positioned to provide distance and views from all suites.
- Perfectly positioned to provide water views from all south-facing suites.

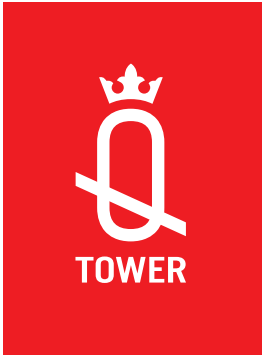


**FOREVER PROTECTED  
VIEWS** OF THE WATER,  
CN TOWER AND  
TORONTO'S  
FAMOUS SKYLINE.



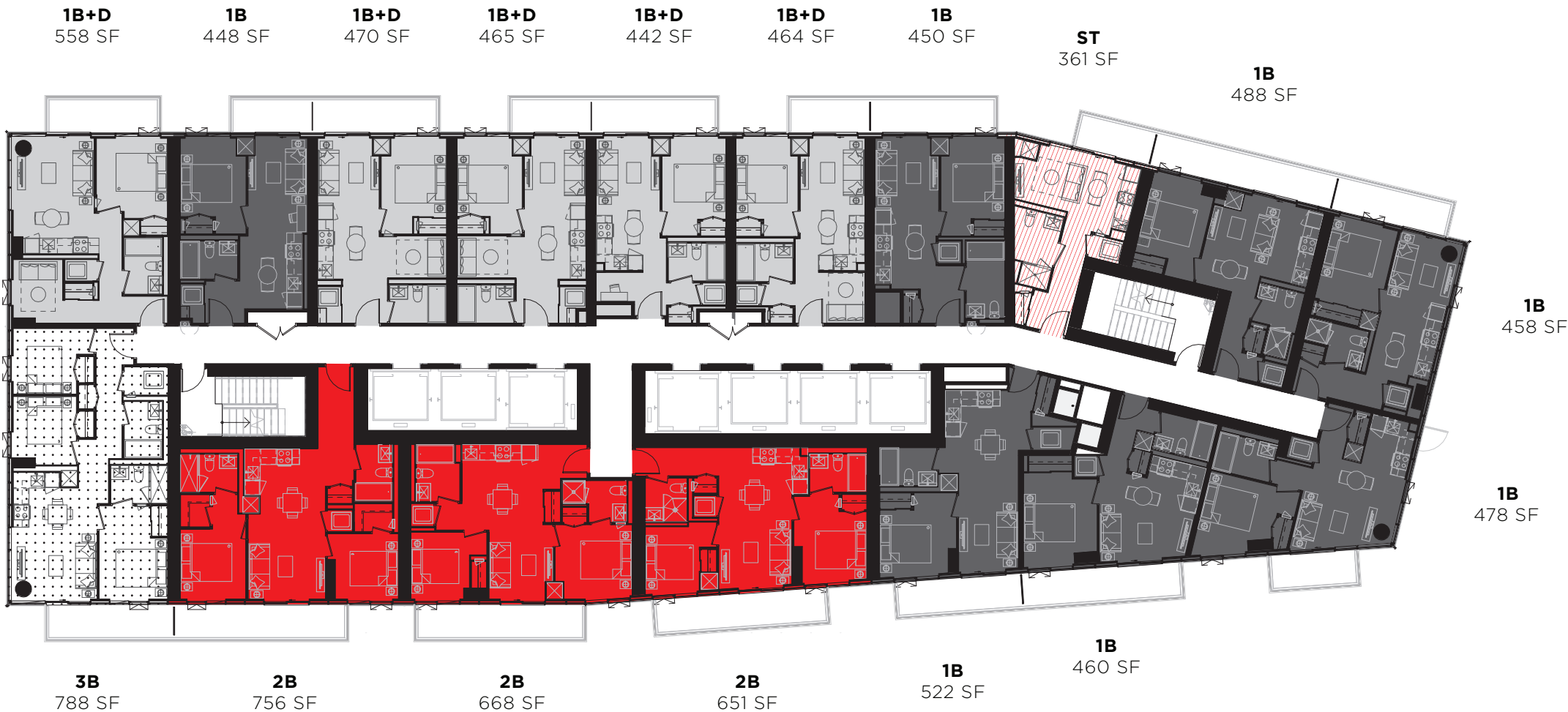


# LOWER TOWER



The most efficient and desirable floorplate that checks all the boxes

- ✓ 7 Elevators
- ✓ Shallow and wide suites maximizing windows and views
- ✓ Every suite has an outdoor balcony
- ✓ Every bedroom in every suite on window with natural light



STUDIO



1 BED



1 BED + DEN



2 BED

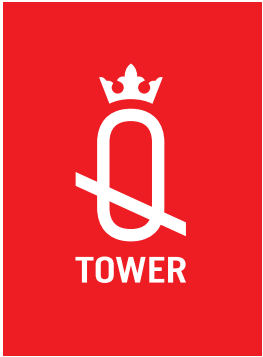


3 BED

All plans, dimensions and specifications are subject to change without notice. Actual useable floor space may vary from the stated floor area. Column locations, window locations and sizes may vary and are subject to change without notice. E. & O.E.



# UPPER TOWER



The most efficient and desirable floorplate that checks all the boxes

- ✓ 7 Elevators
- ✓ Shallow and wide suites maximizing windows and views
- ✓ Every suite has an outdoor balcony
- ✓ Every bedroom in every suite on window with natural light



STUDIO



1 BED



1 BED + DEN



2 BED



2 BED + DEN



3 BED

All plans, dimensions and specifications are subject to change without notice. Actual useable floor space may vary from the stated floor area. Column locations, window locations and sizes may vary and are subject to change without notice. E. & O.E.





# EAST VIEW 30TH FLOOR

Actual photograph





# EAST VIEW 30TH FLOOR

Actual photograph



# NORTH VIEW 40TH FLOOR

Actual photograph





# NORTH VIEW 40TH FLOOR

Actual photograph





# NORTH WEST VIEW 40TH FLOOR

Actual photograph





# NORTH WEST VIEW 40TH FLOOR

Actual photograph





# WEST VIEW 40TH FLOOR

Actual photograph





# WEST VIEW 40TH FLOOR

Actual photograph





# SOUTH WEST VIEW 50TH FLOOR

Actual photograph





# SOUTH WEST VIEW 50TH FLOOR

Actual photograph





# SOUTH EAST VIEW 55TH FLOOR

Actual photograph





# SOUTH VIEW 50TH FLOOR

Actual photograph







DiamondCorp

AUSTIN BIRCH

Austin Birch Development Marketing. Brokers Protected. Prices and specifications are subject to change without notice. Illustration is artist's concept. The contents of this email are not intended to solicit interest from any non Canadian individual, or entity as defined by the prohibition on the Purchase of Residential Property by Non-Canadians Act. E. & O. E.